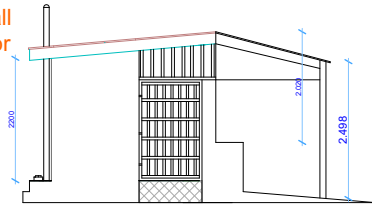


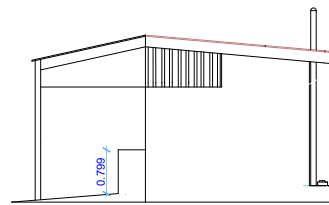
Back view

FRONT VIEW

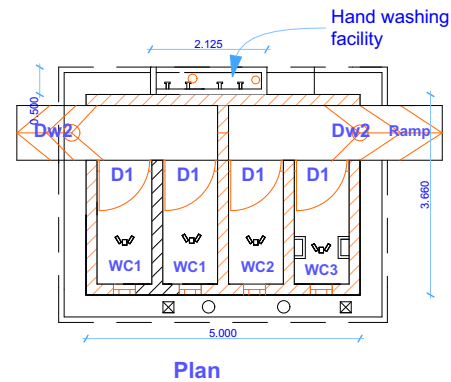
rough cast plastering for the wall for exterior wall



side view 1



side view 2



Plan

No.	Desc-	Qty	Size
1	W1	4	400x500
<b>windows schedule</b>			
<b>Doors schedules</b>			
No.	Desc-	Qty	Size
1	D1	4	1000x1900
1	D2	2	1000X 1900

### Roof Note

Roofed with 28gauge pre-painted or any aproved type on 2x3purlines on 50x50 wall plates and truss. all constructions must be supervised by the site engineer

**Giyada Kindergarden School**