



# JESUIT REFUGEE SERVICES

## INVITATION TO BID

**Ref #: SDS/161&162/2021: REHABILITATION OF 1 WATER WELL AT KING'S COLLEGE; CONSTRUCTION OF 2 PERMANENT CLASSROOMS AT KING'S COLLEGE AND BANGASI ACADEMY; AND CONSTRUCTION OF TEMPORARY CLASSROOMS AT BASWERA, BAZUMBURU AND RIIRANGU PRIMARY SCHOOLS IN YAMBIO**

SCHEDULE OF ITB ACTIVITIES:	
Issue ITB	23 <sup>rd</sup> March, 2021
Questions from Supplier due date	1 <sup>st</sup> April, 2021
Deadline for reply	2 <sup>nd</sup> April, 2021
Deadline for submitting the bid to JRS	5 <sup>th</sup> April, 2021
Evaluation of ITB	5 <sup>th</sup> – 6 <sup>th</sup> April, 2021
References and Due Diligence	7 <sup>th</sup> – 8 <sup>th</sup> April, 2021
Award of Contracts and Review	9 <sup>th</sup> April, 2021
Contracts start	13 <sup>th</sup> April, 2021

## Table of Content

<b>1.</b>	<b>INTRODUCTION .....</b>	<b>1</b>
<b>1.1.</b>	<b>THE JESUIT REFUGEE SERVICES .....</b>	<b>1</b>
<b>1.2.</b>	<b>THE PURPOSE OF THIS INVITATION TO BID (ITB) .....</b>	<b>1</b>
<b>1.3.</b>	<b>COST OF BIDDING.....</b>	<b>2</b>
<b>2.</b>	<b>THE BIDDING DOCUMENTS:.....</b>	<b>2</b>
<b>2.1.</b>	<b>THE BIDDING DOCUMENTS .....</b>	<b>2</b>
<b>2.2.</b>	<b>CLARIFICATION OF BIDDING DOCUMENTS .....</b>	<b>2</b>
<b>3.</b>	<b>PREPARATION OF BIDS .....</b>	<b>2</b>
<b>3.1.</b>	<b>LANGUAGE OF THE BID .....</b>	<b>2</b>
<b>3.2.</b>	<b>DOCUMENTS COMPRISING THE BID .....</b>	<b>2</b>
<b>3.3.</b>	<b>BID PRICES &amp; PRICE CHANGES .....</b>	<b>3</b>
<b>3.4.</b>	<b>BID CURRENCIES.....</b>	<b>3</b>
<b>3.5.</b>	<b>DOCUMENT ESTABLISHING WORKS ELIGIBILITY AND CONFORMITY TO BIDDING DOCUMENTS .....</b>	<b>3</b>
<b>3.6.</b>	<b>BID SECURITY .....</b>	<b>4</b>
<b>3.7.</b>	<b>VALIDITY OF BIDS .....</b>	<b>4</b>
<b>3.8.</b>	<b>FORMAT AND SIGNING .....</b>	<b>4</b>
<b>4.</b>	<b>SUBMISSION OF BIDS.....</b>	<b>4</b>
<b>4.1.</b>	<b>SUBMISSION AND MARKING OF BIDS: .....</b>	<b>4</b>
<b>4.2.</b>	<b>FORMAT .....</b>	<b>5</b>
<b>4.3.</b>	<b>MODIFICATION AND WITHDRAWAL OF BIDS .....</b>	<b>5</b>
<b>5.</b>	<b>BID OPENING AND EVALUATION.....</b>	<b>5</b>
<b>5.1.</b>	<b>PRELIMINARY EXAMINATION .....</b>	<b>5</b>
<b>5.2.</b>	<b>TECHNICAL EVALUATION.....</b>	<b>6</b>
<b>5.3.</b>	<b>CONTACTING JRS.....</b>	<b>7</b>
<b>5.4.</b>	<b>NOTIFICATION OF AWARD .....</b>	<b>7</b>
<b>6.</b>	<b>CONTRACTING .....</b>	<b>7</b>
<b>6.1.</b>	<b>CONTRACT AWARD AND NOTIFICATION .....</b>	<b>7</b>
<b>6.2.</b>	<b>EVALUATION .....</b>	<b>7</b>
<b>6.3.</b>	<b>COMMISSIONS, RATES, PRICE SCHEDULES, AND LOCATION .....</b>	<b>7</b>
	<b>DISCLAIMER .....</b>	<b>7</b>
<b>7.</b>	<b>ANNEXES: BILLS OF QUANTITIES, DESIGNS AND DRAWINGS FOR THE STRUCTURES. ....</b>	<b>7</b>

## 1. INTRODUCTION

### 1.1. The Jesuit Refugee Services

Jesuit Refugee Service is a Catholic Church-based international humanitarian organization, with a Mission to accompany, serve, and advocate for the rights of refugees and forcibly displaced persons. JRS has a priority to work wherever the needs of refugees and internally displaced people are urgent and unattended to.

In Yambio and Maban, JRS offers a wide range of rehabilitation and relief services most of which focus on Protection and mixed solutions for IDPs, Returnees and Host communities. JRS provides education scholarships and sanitary kits to girls and young women attending school on top of the teacher training scholarships for those wishing to attain their diplomas and degrees.

Through the community and school-based peace building initiatives, JRS utilizes mediation mechanisms and workshops to encourage and foster reconciliation as a means of moving away from violence.

With funding from UNHCR, BPRM, Tdh/BMZ, Xavier Network, JRS USA, Kost, Solidarity, Spanish Jesuit Mission Office and Interculturas, JRS has been working in South Sudan since 1997, providing these essential services.

### 1.2. The Purpose of this Invitation to Bid (ITB)

With funds advanced by Tdh, and through this Invitation to Bid (ITB), JRS seeks to secure competitive Bids for the selection of a Contractor for the construction of 2 permanent blocks of classrooms and 2 Temporary Classrooms in Kings College and Bangasi Schools in Yambio. Eligible and technically qualified companies competent to provide the Construction works are invited to submit their bids as follows:

LOT REFERENCE NUMBER	CATEGORY DESCRIPTION
LOT #1: SDS/161/2021-A	CONSTRUCTION OF ONE (1) PERMANENT BLOCK IN KINGS COLLEGE IN YAMBIO
LOT #2: SDS/161/2021-B	CONSTRUCTION OF ONE (1) PERMANENT BLOCK IN BANGASI SCHOOL IN YAMBIO
LOT #3: SDS/162/2021-A	CONSTRUCTION OF ONE (1) TEMPORARY LEARNING SPACE IN BASWERA PRIMARY SCHOOL
LOT #4: SDS/162/2021-B	CONSTRUCTION OF ONE (1) TEMPORARY LEARNING SPACE IN RIIRANGU PRIMARY SCHOOL
LOT #5: SDS/162/2021-C	CONSTRUCTION OF ONE (1) TEMPORARY LEARNING SPACE IN BAZUMBURU PRIMARY SCHOOL.
LOT #6: SDS/162/2021-D	CONSTRUCTION OF THREE BLOCKS OF LATRINES IN KING'S COLLEGE IN YAMBIO.
LOT #7: SDS/162/2021-E	CONSTRUCTION OF ONE BLOCK OF LATRINES IN BANGASI SCHOOL IN YAMBIO.
LOT #8: SDS/163/2021-A	REPAIR & MAINTENANCE OF 13 METRE WELL AT KINGS COLLEGE

The winning bidder(s) will enter into a fixed term contract for the duration of the works. Bidders shall be domiciled and must have complied with all Government legal Regulations to operate in South Sudan and Yambio and regular taxpayers. The Bidder shall not be under any declaration of ineligibility or exclusion for corrupt or fraudulent practices in South Sudan or any other country of operation.

### 1.3. Cost of Bidding

The Bidder shall be responsible for all costs associated with the preparation and submission of their bids, and JRS, “the Contracting Authority”, will in no way be responsible or liable for those costs, regardless of the conduct or outcome of the bidding process.

## 2. THE BIDDING DOCUMENTS:

### 2.1. The Bidding Documents

The Bidder shall inspect all documents and information, forms, terms, and conditions in this ITB. Failure to furnish all information and address all areas of the bidding documents will be considered as substantially unresponsive and may lead to rejection of the bid in its entirety.

*The Bidding documents comprise of the following documents:*

- Bid Notice
- The Invitation to Bid document, this document.
- Bill of Quantities (BoQs)
- Drawings and Designs for the Permanent & Temporary Classrooms and latrines, Wells.
- JRS Code of Conduct.

### 2.2. Clarification of Bidding Documents

Any prospective Bidder wishing to seek for further clarification on the bidding documents may notify JRS through the email address: [southsudan.logistics@jrs.net](mailto:southsudan.logistics@jrs.net). The request for clarification must reach JRS not later than **1<sup>st</sup> April 2021**. A representative of JRS will respond by e-mail providing clarification by the **2<sup>nd</sup> of April 2021**. Response to such communication shall be shared with other bidders with explanation of the query without identifying the source.

## 3. PREPARATION OF BIDS

### 3.1. Language of the Bid

The bid and all accompanying correspondence between the bidders and JRS shall be written in English language only. Any printed literature furnished by the bidder and written in another language must be accompanied by an English translation of its pertinent passages, in which case, for purposes of interpretation of the bid, the English translation shall prevail. Any translations must be performed by a licensed translator as recognized and notarized by the Courts of South Sudan.

### 3.2. Documents Comprising the Bid

The submitted bid must include the following information. Failure to supply all requested information or comply with the specified formats may disqualify the bidder from further evaluation.

- Cover letter expressing interest to provide Construction Works services for the Permanent and Temporary Classrooms, Latrines, and the Rehabilitation of Wells.
- Technical proposal detailing the Company Profile (5 pages maximum) with a brief description of the firm’s organization, Structure, Organogram, and summary of the senior personnel in the company.
- Provide a table of recent construction works carried out for any International Non-Governmental Organization in South Sudan on similar Works (indicate the Year of Construction, Contract Amount, the INGO which contracted you for the work and when it was started and completed).

- *Provide a summary and profiles of the Key Staff proposed for the project(s). This includes the Engineer or Foreman to act as the Construction Project Managers and who will supervise the work(s) as well as any Technical and non-technical staff who will handle contractual issues (Note that the absence of an Engineer will be grounds for non-award).*
- *Gantt Chart or outline of key stages of construction in a Work Plan for all Categories of Works mentioned above. This workplan should indicate duration of each stage of the construction schedule and time in days stipulated.*
- *A Financial Proposal detailing the costs of carrying out the Construction work presented in the same format of the BoQ in own letterhead. Where bidders feel the JRS BoQ is not sufficiently capturing some of the elements for the construction of the various structures, they may opt to propose this in a separate sheet.*
- *Certificate of Incorporation and or Registration in South Sudan.*
- *License for Operations from any City in South Sudan.*
- *Tax Registration Certificates.*
- *Tax Compliance Certificates/ Evidence of payment of tax to any relevant authority within South Sudan.*
- *Bank details and 3-Months Financial Statements from a reputable Bank in South Sudan. Additionally, please state the amount of revenue generated by your company in the last 3 months to one year, where this is available.*
- *Provide details of Three Referees that JRS may contact to give a testament of your previous completed works. Further, provide Three Reference Letters and or any record of similar previous relevant construction work with INGOs or UN Agencies*
- *JRS Conflict of Interest and Code of Conduct completed, stamped, signed, and submitted.*
- *Any other document the bidder might feel will increase chances of award.*

### 3.3. Bid Prices & Price Changes

For the purpose of selecting a Contractor, the Bidder shall clearly indicate the unit price of each of the items in the Bill of Quantities. The Bidder must sign and officially stamp the price schedule on the Bill of Quantities.

During the validity period of the ensuing Contract, any price changes must be expressed in writing to JRS, 15 days before implementing such change. JRS will also respond to the request in writing within 15 days. Once the changes have been agreed upon, an addendum will be signed to form part of the original contract.

To ensure the quality of the workmanship, JRS will **retain 10%** of the total amount of the contract arising therefrom, during the defects liability period as per the practice in the construction sector. Where the contractor is not responsive to any repairs during this period, an amount will be deducted to cover such repairs with another contractor, and these notes kept as non-performance.

### 3.4. Bid Currencies

All rates and amounts entered in the Bid Form and Price Schedule and used in any documents, correspondence or operations pertaining to this tender shall be expressed in **United States Dollar (USD)**.

### 3.5. Document Establishing Works Eligibility and Conformity to Bidding Documents

Pursuant to *Clause 3*, the bidder shall furnish, as part of their bid, documents establishing the eligibility and conformity to the Bidding Documents of all works to be provided under the contract.

The Documentary evidence of the Works' conformity to the Bidding Documents may be in the form of technical specifications, literature, drawings, data (tables, graphs etc.).

### 3.6. Bid Security

For the Purpose of this ITB process, Bid Security or Bond shall not be applicable.

### 3.7. Validity of Bids

Given the length of the contract, its JRS wish that the Bids remain **valid for a minimum period of Ninety (90) days** after submission.

### 3.8. Format and Signing

All pages of the original bid shall be signed by the Bidder or a person or persons duly authorized to bind the Bidder to the contract. Financial proposal pages of the bid shall be initialed by the person or persons signing the bid and stamped with the company seal.

Any interlineations, erasures, or overwriting shall be valid only if they are initialed by the person or persons signing the bid.

The bidder shall include a cover letter in their Financial proposal. The content of the cover letter shall include the following information:

- A table containing bid offer and item(s) description.
- Outline or specification of the Works to be offered per Lot. Each Lot shall be submitted separately. Bidders who wish to bid for several of the Lots, they will need to submit individual offers separately for each.
- State the Delivery time from the Gantt Chart and Workplan for completion of each lot and works.
- State the Total Revenue and or Turnover of your Construction Business for the last 6-12 Months period.
- Price validity date (for this purpose and as stated on the advertisement, quote given shall remain unchanged for 90 days).

## 4. SUBMISSION OF BIDS

### 4.1. Submission and Marking of Bids:

The Marking on the Sealed Envelope containing the Technical and Financial Proposals shall be as follows:

**Ref #: SDS-161&162-2021: LOT No. XXX: CONSTRUCTION OF XXX IN YAMBIO**

The procurement & Tender Committee  
Jesuit Refugee Services  
JRS Yambio, Behind the Diocese Offices  
Yambio, South Sudan  
OR  
The procurement & Tender Committee  
Jesuit Refugee Services  
JRS Office in Juba, Tong Ping  
Juba, South Sudan

And delivered before **5<sup>th</sup> of April 2021 at 1700hrs EAT.**

Bids submitted after the deadline will not be accepted.

Bidders must sign the bid register form at the reception of the office indicating their company name, telephone number, and date of submission.

#### 4.2. Format

The Bidder's offer shall comprise of all the documents requested by JRS, price and cost Schedules and any other supporting documents in a sealed envelope. Please, indicate the **reference #** (Number) as indicated above.

#### 4.3. Modification and Withdrawal of Bids

No modification or withdrawal of any bid shall be allowed after submission and deadline date.

### 5. BID OPENING AND EVALUATION

#### 5.1. Preliminary Examination

JRS will examine the bids to determine whether they are complete, free of any computational errors, and that all required licenses have been provided and requisite documents properly signed and stamped and whether bids are generally in order:

ADMINISTRATIVE REQUIREMENT	YES	NO
APART FROM THE NORMAL PROCESS, CONTRACTORS WILL SHOW EVIDENCE OF HAVING PPEs FOR PREVENTION AGAINST COVID-19 FOR THEIR STAFF WORKING IN THE PROJECT		
Is Profile of the Contractor or company with a table showing recent relevant construction experience provided?		
Is Certificate of Incorporation and or Registration provided?		
Is Operational License in the name of the Company provided?		
Is Construction License for 2021 for this category of works provided?		
Is Tax Clearance with any recognized regional or national authority provided?		
Is there evidence for Current Tax Submission and deductions by the bidder?		
Has the bidder provided Bank Statements and details in the name of the Contractor company		
Is there a Profile of Supervising Engineer of the Works in the bid document?		
Has the Detailed Bill of Quantities aligned to these specific works fully populated with prices		
Has the bidder provided a Gantt Chart/ or Construction Work Plan with clear completion timelines for each phase of the construction work for the Classrooms, Kitchen & Dining hall?		
Has the Bidder provided Financial Bid in the Bid Document?		
<b>PROCEEDS TO THE NEXT EVALUATION (YES OR NO)</b>		

Those not providing over 80% of the requirements will not be progressed to the next stage of technical evaluation.

## 5.2. Technical Evaluation.

Bids determined to be substantially responsive as per *section 5 above* will be considered for the evaluation stage with the below scoring criteria:

EVALUATION CRITERIA		
Tech Eval:	Description	Score (%)
<b>Technical Capacity and Structure of the bidding Company</b>	<p>The Capacity of the Contractor:</p> <ol style="list-style-type: none"> <li>General Organization structure and or profile of the Construction Bidding Company and the owners - [5]</li> <li>A table showing 5-10 recent and previous assignments and or completed works with their value - [10]</li> <li>The Capacity in terms of the Technical Qualifications (Project Managers, Engineer/Masons) and Number of Employees in the company - [10%].</li> <li>Number of Years' Experience of the Lead Engineer, Foreman or Construction project Manager (Minimum 5 Years) - [10]</li> <li>Number of Years (minimum 3) experience of the company in the sector and in similar works – [10%]</li> <li>Suitable equipment (preferably including own vehicles for transporting materials and performance of the construction work – [5%].</li> <li>Detailed and itemized Price schedule, preferably in the Bill of Quantities aligned to these specific works [5%]</li> <li>Financial Capacity: Amount of Turnover of the Company: Provide Bank Statements and Financial Statements of the Company for the past 3 years. State your turnover for the period [15%]</li> </ol>	<b>70%</b>
<b>Work Completion Time/ Delivery Time (from the work plan/Gantt Chart.</b>	<p>Completion Timeline: bidder to provide a Gantt Chart/ or Construction Work Plan with clear completion timelines for each phase of the construction work for the Classrooms, Kitchen &amp; dining hall.</p> <ol style="list-style-type: none"> <li>Bidder's Offered Works completion Time (<i>from the work plan/Gantt Chart</i>) as compared to other bidders – [20%].</li> </ol> <p><b>(Score on Lead Time = (Shortest Lead Time Offered/Bidder Lead Time) *20%)</b></p>	<b>20%</b>
<b>References, Letters, Copies of Contracts</b>	<p>This refers to the bidder providing: Provide details of Three Referees that JRS may contact to give a testament of your previous completed works. Further, provide Three Reference Letters and or any record of similar previous relevant construction work with INGOs or UN Agencies</p> <ol style="list-style-type: none"> <li>Any documents, letters, contract copies, purchase orders or relevant information demonstrating experience and capacity to deliver – [10%].</li> </ol>	<b>10%</b>
	<b>TECHNICAL EVALUATION SCORE OUT OF 100%</b>	<b>100%</b>
<b>Financial Proposal</b>	<p><b>FINANCIAL PROPOSAL SCORE.</b></p> <p><b>SCORE= (LOWEST BID OFFER PRICE/OFFERED BID PRICE) *100%</b></p>	<b>100%</b>
<b>TECHNICAL EVALUATION (60 Points)</b>	<b>WEIGHTED SCORES:</b>	<b>60 Points</b>
<b>+</b>	<b>TECHNICAL EVALUATION=[SCORE/100) *60 POINTS]</b>	<b>+</b>
<b>FINANCIAL (40</b>	<b>FINANCIAL EVALUATION SCORE= (LOWEST BID PRICE/OFFERED BID PRICE) *40 Points</b>	<b>40</b>



Points)		Points
	<b>TOTAL WEIGHT (TECHNICAL EVALUATION + FINANCIAL EVALUATION)</b>	<b>100 Points</b>

### 5.3. Contacting JRS

Subject to *Clause 5*, no Bidder shall contact JRS on any matter relating to its bid, from the time of the bid opening to the time the Contract is awarded or selected authorized supplier or vendor is announced save as provided for in the bidding clarifications section.

### 5.4. Notification of Award

A representative of JRS will notify successful and unsuccessful bidders in writing about bid acceptance/unacceptance. For Successful bidders, JRS will share draft Contract for review before signature of the final contract. At this time, JRS may choose to negotiate with the selected bidder to finalize the offer.

## 6. CONTRACTING

### 6.1. Contract award and notification

JRS will award and notify the Contractor(s) whose Bid have been determined to be substantially responsive and considering rates, price, and performance factors.

### 6.2. Evaluation

JRS, where applicable, will have the right to assess and evaluate Contractor's works and this will be done by JRS Construction Consultant and or Programme staff.

Should the works not conform to the generally accepted building standards expected, JRS may discontinue the works without extension of time except at JRS's sole discretion. Upon discontinuation, the Contractor shall refund JRS prorated amounts up to and including the last day of notice.

### 6.3. Commissions, Rates, Price Schedules, and Location

Bidders interested in the Construction works, should provide the information requested above and, in the *Annexes*, below.

#### *Disclaimer*

JRS reserves the right to alter the dates of the timetable.

JRS does not bind itself to accept the lowest or any Bid thereof.

## 7. ANNEXES: BILLS OF QUANTITIES, DESIGNS AND DRAWINGS FOR THE STRUCTURES.

**ANNEXE I: BOQ FOR LOT #1: SDS/161/2021-A: CONSTRUCTION OF ONE (1) PERMANENT CLASSROOM BLOCK IN KINGS COLLEGE IN YAMBIO**

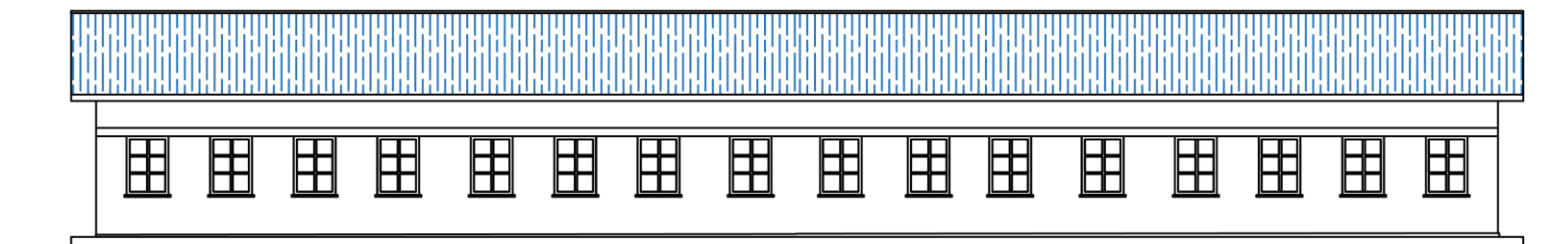
**Table 1: Bills of quantities for the construction of a proposed 1 block 4 classrooms in Yambio county**

s/n	description	units	qty	Unit Cost	Total Cost
-	<b>Note:</b> the rates shall include supply of materials and labor cost required to execute the work <b>unless</b> stated in the item	note	note		
	<b>Bill no. 1- mobilization</b>				
-	Mobilize for the materials and labor force required to execute the work	LS	-		
	<b>Total for mobilization</b>				
	<b>Bill no. 2 – site clearance</b>				
-	Clear the site by cutting down trees, tree stumps, thickets, bushes, shrubs etc to make it sufficient for site establishment	M2	486		
	<b>Total for site clearance</b>				
	<b>Bill no.3 – excavation and earth works</b>				
-	Excavate foundation trenches 0.6m wide and not exceeding 0.8m deep	M3	71.04		
-	Fill the foundation bed using imported quality marram or hardcore well compacted in layers of 400mm	M3	125.12		
-	Fill around the foundation plinth walls using selected excavated materials and compact well	M3	3.46		
-	Load and cart away surplus excavated materials	M3	7.10		
	<b>Total for excavations and earth works</b>				
	<b>Bill no. 4 – thermal and moisture protection</b>				
-	Supply place and spread dump proof membrane (DPM) G1000 on the compacted floor	M2	316.2		
-	Ditto but Dump Proof Coarse (DPC) on the casted floor slab to receive superstructure walls	m	102.45		
	<b>Total for thermal and moisture protection</b>				
	<b>Bill no.5 – anti-termite treatment</b>				
-	Supply and sprinkle anti-termite preferably aidrex or its equivalent on the compacted floors and plinth walls	M2	316.2		
	<b>Total for anti-termite treatment</b>				
	<b>Bill n0.6 – masonry work</b>				

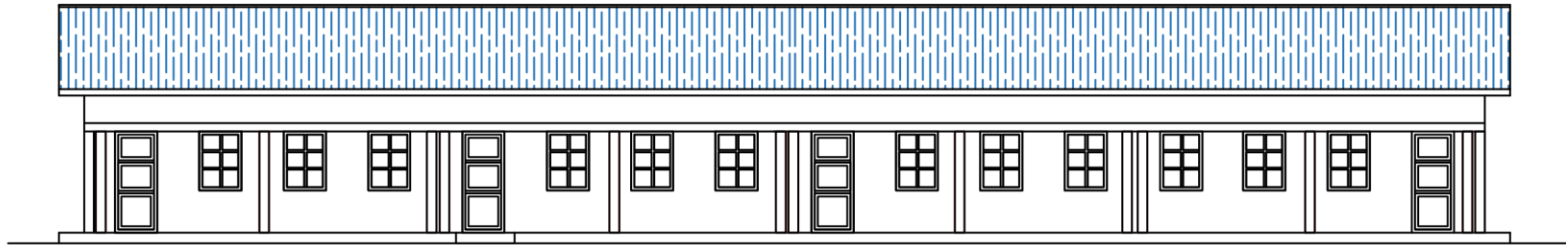
-	Build sub-structure walls 230mm thick well reinforce with loop irons place at an interval of 400mm with joints tied with mortar mixed at the ratio c/s 1:4	M2	163.35		
-	Ditto but super-structure walls	M2	387.7		
	<b>Total for masonry work</b>				
	<b>Bill no.7 – reinforcement/steel work</b>				
-	Supply, cut, bend, tie, and hoist reinforcements as required				
-	12mm high yield bars	Kgs	712.8		
-	8mm mild steel bars	Kgs	262.8		
-	BRC A142 mesh fabric for the floors	kgs	312.8		
	<b>Total for reinforcements/steel work</b>				
	<b>Bill no.8 – form work</b>				
-	Supply, cut and join the form work to the ground slab R.C beams, R.C columns and scaffoldings				
	- 300x25 timbers	M	300		
	- 225x25mm timbers	M	591.6		
	- 100x50mm timbers	M	280		
	<b>Total for formwork</b>				
	<b>Bill no.9 concrete work</b>				
-	Supply and place concrete grade 1:3:6, 100mm thick to the foundation trenches as blinding				
-	Ditto but to ground slab (100 thick)	M3	35.95		
-	Supply and place concrete grade 1:2:4 to the columns and beams and ramps/apron	M3	9.02		
	<b>Total for concrete work</b>				
	<b>Bill no.10 – roof construction</b>				
-	Construct the roof using well sawn timbers with moisture content not exceeding 16%				
	- 75x50m timbers for the purlins	M	500		
	- 1000x50mm timbers for the trusses, ties, and struts	M	620		
	- 100x75mm timbers for the wall plates	M	100		
	- 150x50mm for the tie beams	M	250		

	- 225x50mm well planned and grooved for the fascial board	M	110		
	<b>Covers</b>				
-	Supply and fix G28 pre-painted IT4 box profile sheets on the fixed purlins	M2	415		
-	Supply and fix G28 pre-painted ridge caps	M	35		
	<b>Total for roof construction</b>				
	<b>Bill no.11 – wall and floor finishes</b>				
-	Plaster the external walls 30mm thick well finished semi-rough using a wooden float	M2	216.34		
-	Plaster the internal walls 25mm thick well finished using a steel float	M2	415.69		
-	Introduce floor screed 40mm thick well finished smooth with cement slurry using steel float	M2	378.6		
	<b>Total for walls and floor finishes</b>				
	<b>Bill n0.12 – fittings</b>				
-	Supply and fix metallic windows of size 1200x1200mm without grills	no	28		
-	Supply and fix metallic doors of dimensions 1000x2200mm	no	4		
	<b>Total for the fittings</b>				
	<b>Bill no.13 – paintwork and decoration</b>				
-	Supply and apply 3 coats of quality emulsion paints on the external walls of approved color	M2	216.3		
-	Supply and apply 3 coats of quality interior paints on the internal walls	M2	415.69		
-	Supply and apply 3 coats of oil premier paints on the metallic doors and windows	M2	49.12		
-	Supply and apply 3 coats of special blackboard paints on the blackboard walls	M2	3.9		
	<b>Total for paintwork and decorations</b>				
	<b>Total summary for the construction of 1 block 4 classrooms</b>				

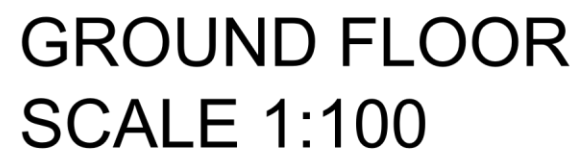
**ANNEXE I: *DESIGNS AND DRAWINGS FOR LOT #1: SDS/161/2021-A*: CONSTRUCTION OF ONE (1) PERMANENT CLASSROOM BLOCK IN KINGS COLLEGE IN YAMBIO**

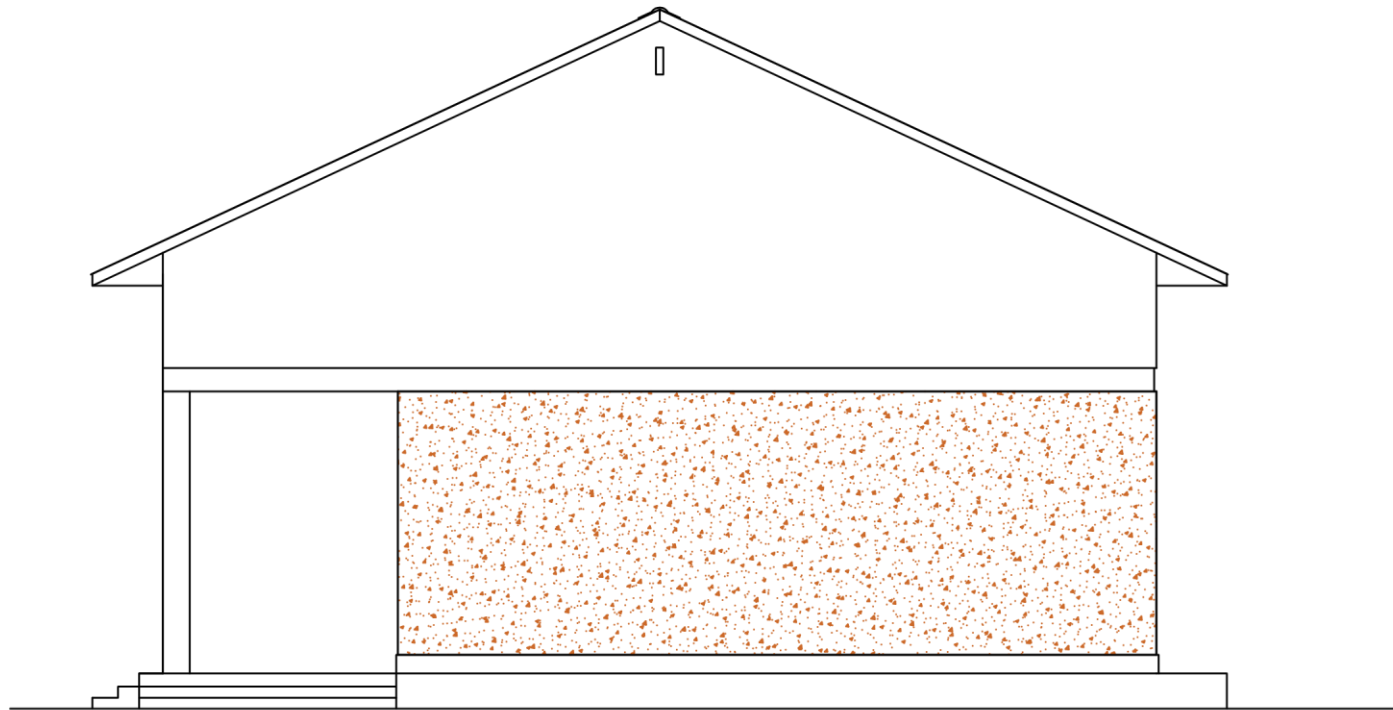


BACK ELEVATION



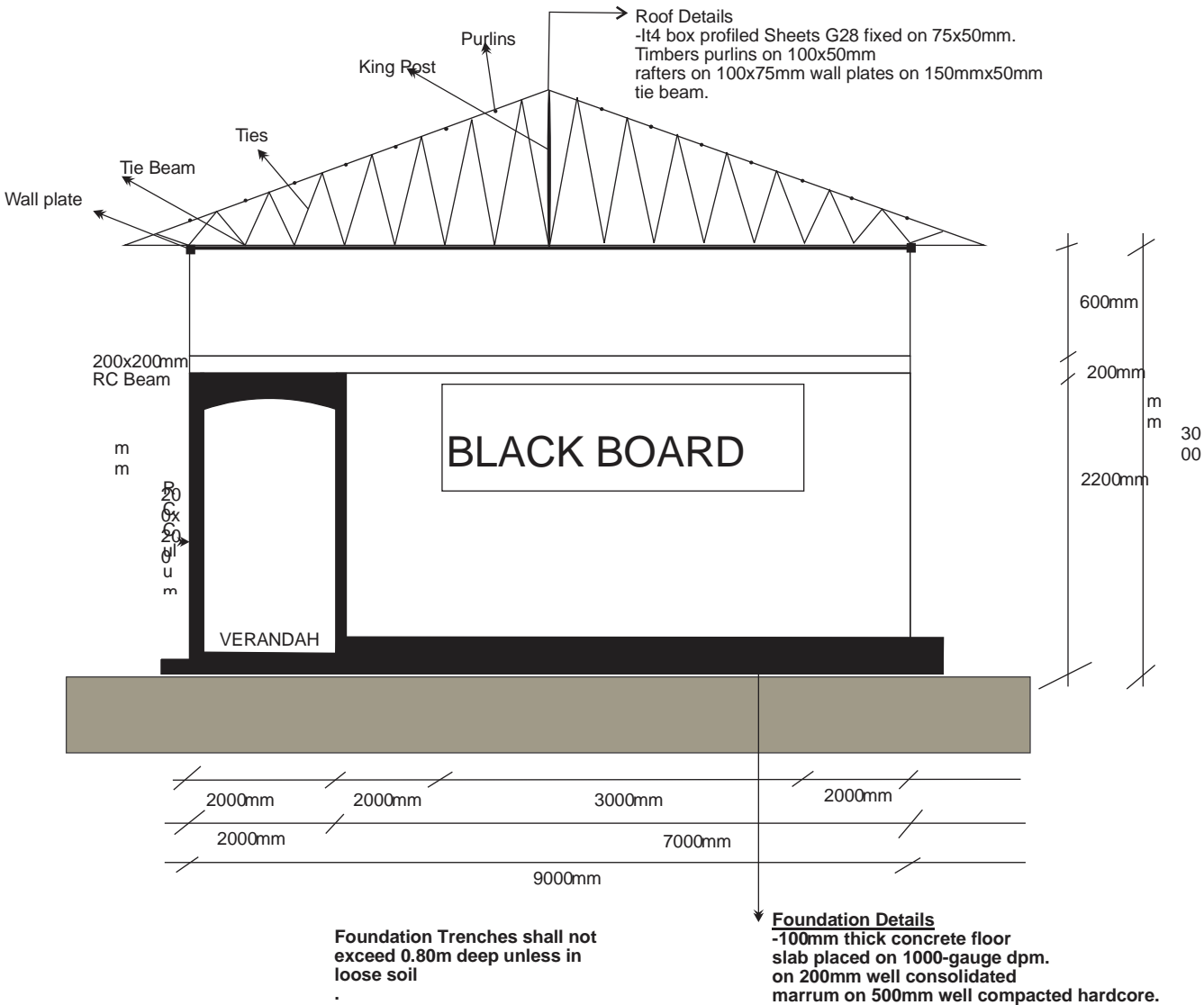
FRONT ELEVATION





SIDE ELEVATION





**ANNEXE II: *BOQ FOR LOT #2: SDS/161/2021-B: CONSTRUCTION OF ONE (1) PERMANENT CLASSROOM BLOCK IN BANGASI SECONDARY SCHOOL IN YAMBIO.***

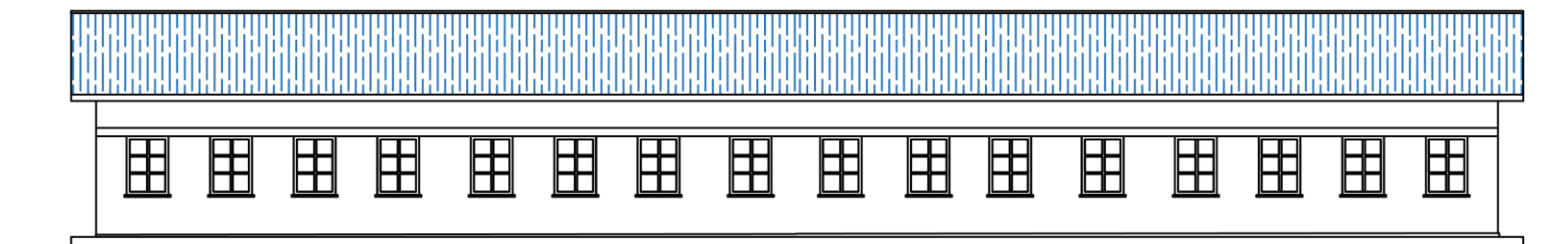
**Table 2: Bills of quantities for the construction of a proposed 1 block 4 classrooms in Yambio county**

s/n	description	units	qty	Unit Cost	Total Cost
-	<b>Note:</b> the rates shall include supply of materials and labor cost required to execute the work <b>unless</b> stated in the item	note	note		
	<b>Bill no. 1- mobilization</b>				
-	Mobilize for the materials and labor force required to execute the work	LS	-		
	<b>Total for mobilization</b>				
	<b>Bill no. 2 – site clearance</b>				
-	Clear the site by cutting down trees, tree stumps, thickets, bushes, shrubs etc to make it sufficient for site establishment	M2	486		
	<b>Total for site clearance</b>				
	<b>Bill no.3 – excavation and earth work</b>				
-	Excavate foundation trenches 0.6m wide and not exceeding 0.8m deep	M3	71.04		
-	Fill the foundation bed using imported quality marram or hardcore well compacted in layers of 400mm	M3	125.12		
-	Fill around the foundation plinth walls using selected excavated materials and compact well	M3	3.46		
-	Load and cart away surplus excavated materials	M3	7.10		
	<b>Total for excavations and earth works</b>				
	<b>Bill no. 4 – thermal and moisture protection</b>				
-	Supply place and spread dump proof membrane (DPM) G1000 on the compacted floor	M2	316.2		
-	Ditto but Dump Proof Coarse (DPC) on the casted floor slab to receive superstructure walls	m	102.45		
	<b>Total for thermal and moisture protection</b>				
	<b>Bill no.5 – anti-termite treatment</b>				
-	Supply and sprinkle anti-termite preferably aidrex or its equivalent on the compacted floors and plinth walls	M2	316.2		

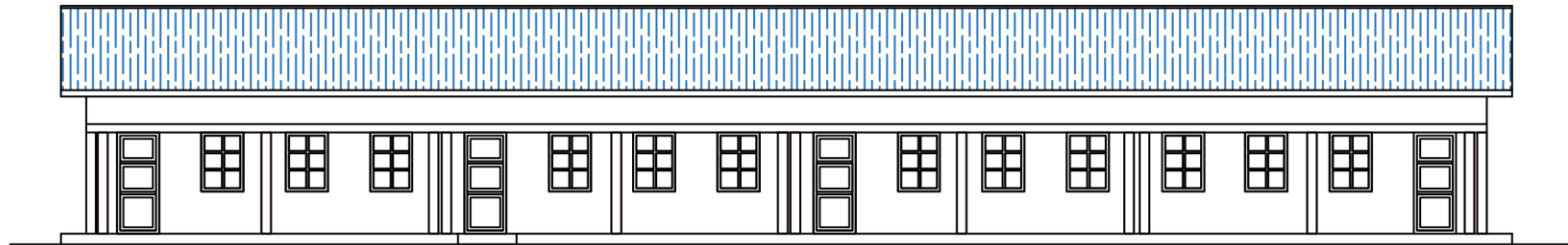
	<b>Total for anti-termite treatment</b>				
	<b>Bill n0.6 – masonry work</b>				
-	Build sub-structure walls 230mm thick well reinforce with loop irons place at an interval of 400mm with joints tied with mortar mixed at the ratio c/s 1:4	M2	163.35		
-	Ditto but super-structure walls	M2	387.7		
	<b>Total for masonry work</b>				
	<b>Bill no.7 – reinforcement/steel work</b>				
-	Supply, cut, bend, tie, and hoist reinforcements as required				
-	12mm high yield bars	Kgs	712.8		
-	8mm mild steel bars	Kgs	262.8		
-	BRC A142 mesh fabric for the floors	kgs	312.8		
	<b>Total for reinforcements/steel work</b>				
	<b>Bill no.8 – form work</b>				
-	Supply, cut and join the form work to the ground slab R.C beams, R.C columns and scaffoldings				
	- 300x25 timbers	M	300		
	- 225x25mm timbers	M	591.6		
	- 100x50mm timbers	M	280		
	<b>Total for formwork</b>				
	<b>Bill no.9 concrete work</b>				
-	Supply and place concrete grade 1:3:6, 100mm thick to the foundation trenches as blinding				
-	Ditto but to ground slab (100 thick)	M3	35.95		
-	Supply and place concrete grade 1:2:4 to the columns and beams and ramps/apron	M3	9.02		
	<b>Total for concrete work</b>				
	<b>Bill no.10 – roof construction</b>				
-	Construct the roof using well sawn timbers with moisture content not exceeding 16%				
	- 75x50m timbers for the purlins	M	500		
	- 1000x50mm timbers for the trusses, ties, and struts	M	620		
	- 100x75mm timbers for the wall plates	M	100		
Page 10 of 68					

	- 150x50mm for the tie beams	M	250		
	- 225x50mm well planned and grooved for the fascial board	M	110		
	<b>Covers</b>				
-	Supply and fix G28 pre-painted IT4 box profile sheets on the fixed purlins	M2	415		
-	Supply and fix G28 pre-painted ridge caps	M	35		
	<b>Total for roof construction</b>				
	<b>Bill no.11 – wall and floor finishes</b>				
-	Plaster the external walls 30mm thick well finished semi-rough using a wooden float	M2	216.34		
-	Plaster the internal walls 25mm thick well finished using a steel float	M2	415.69		
-	Introduce floor screed 40mm thick well finished smooth with cement slurry using steel float	M2	378.6		
	<b>Total for walls and floor finishes</b>				
	<b>Bill n0.12 – fittings</b>				
-	Supply and fix metallic windows of size 1200x1200mm without grills	no	28		
-	Supply and fix metallic doors of dimensions 1000x2200mm	no	4		
	<b>Total for the fittings</b>				
	<b>Bill no.13 – paintwork and decoration</b>				
-	Supply and apply 3 coats of quality emulsion paints on the external walls of approved color	M2	216.3		
-	Supply and apply 3 coats of quality interior paints on the internal walls	M2	415.69		
-	Supply and apply 3 coats of oil premier paints on the metallic doors and windows	M2	49.12		
-	Supply and apply 3 coats of special blackboard paints on the blackboard walls	M2	3.9		
	<b>Total for paintwork and decorations</b>				
	<b>Total summary for the construction of 1 block 4 classrooms</b>				

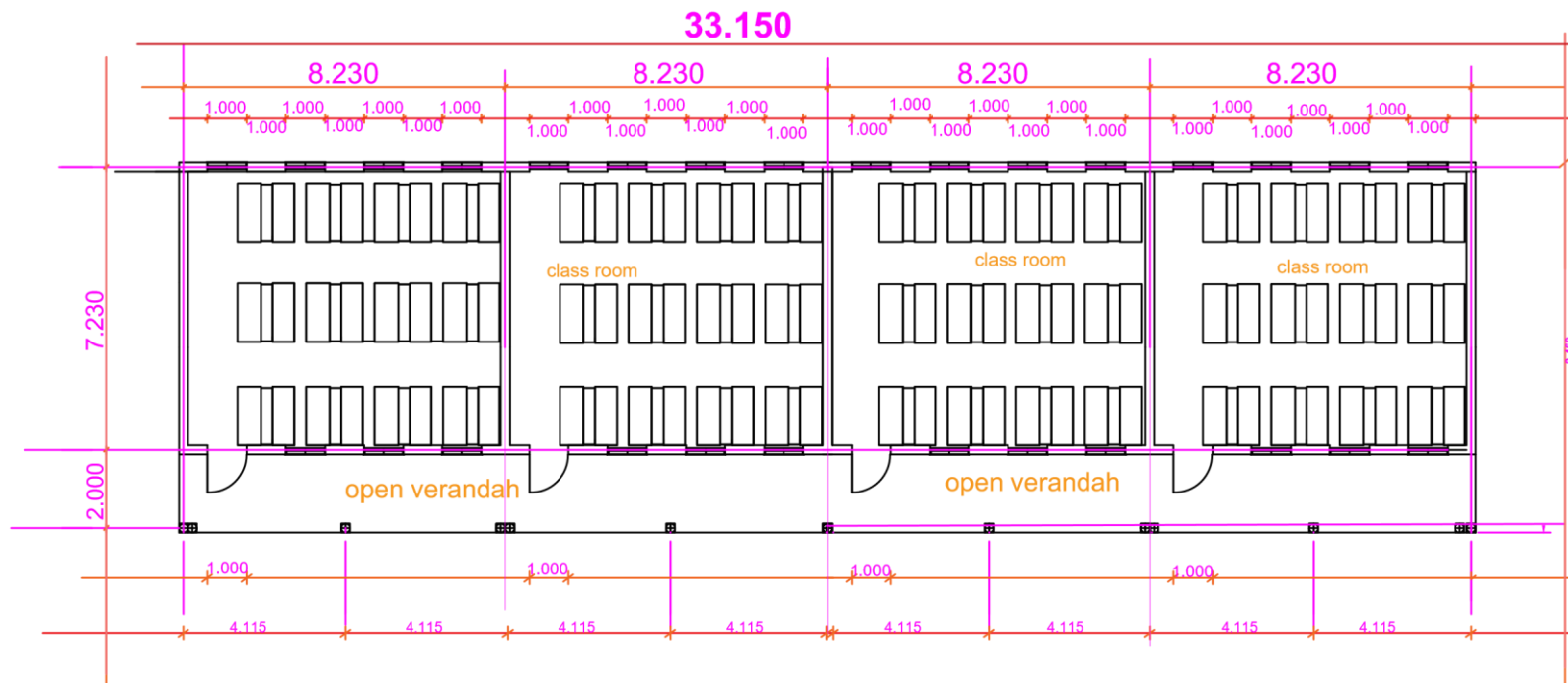
**ANNEXE II: *DESIGNS AND DRAWINGS FOR LOT #2: SDS/161/2021-B: CONSTRUCTION OF ONE (1) PERMANENT CLASSROOM BLOCK IN BANGASI SCHOOL IN YAMBIO.***



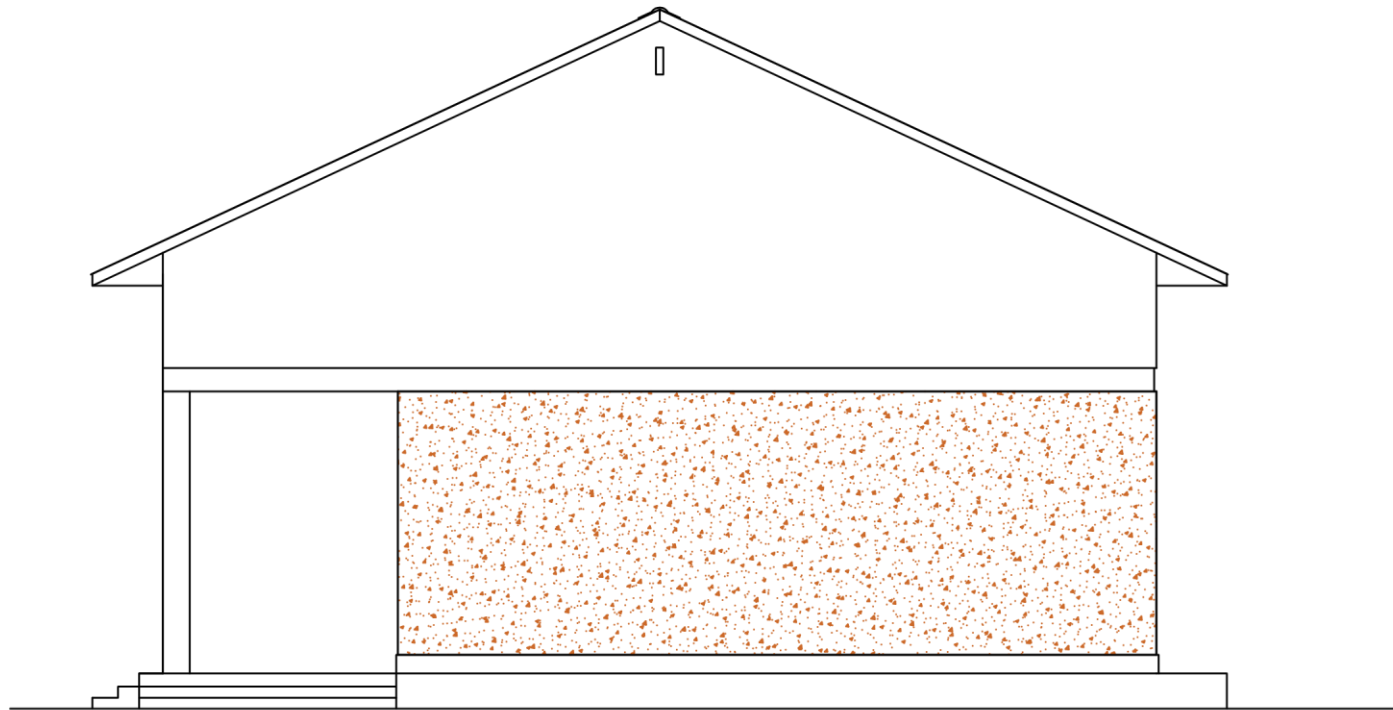
BACK ELEVATION



FRONT ELEVATION



GROUND FLOOR  
SCALE 1:100



SIDE ELEVATION





**ANNEXE III: *BOQ FOR LOT #3: SDS/162/2021-A: CONSTRUCTION OF ONE (1) TEMPORARY LEARNING SPACE IN BASWERA PRIMARY SCHOOL.***

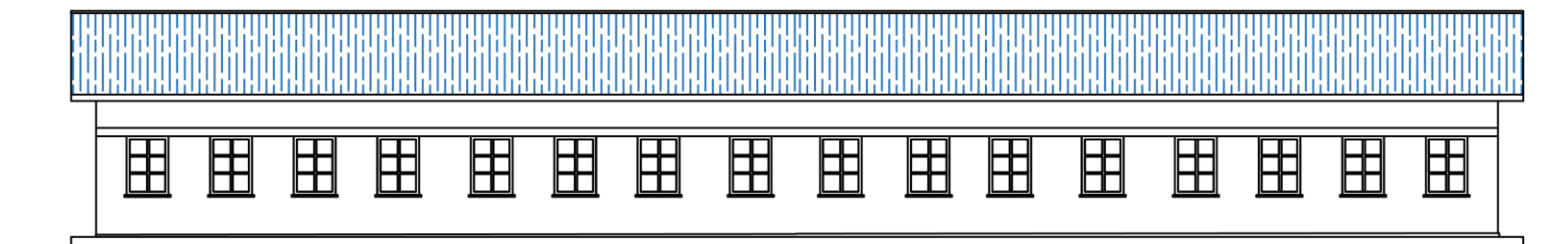
**Table 3: Bill of Quantities for the construction of proposed semi-permanent (1 Block 4 Classrooms)**

S/N	Items Description	Unit	QTY	Unit Cost (USD)	Total Cost (USD)
	<b>Note</b>				
	The rate shall include supply of materials and labour cost required to execute the work, unless stated in the Items	Note	Note		
	<b>Bill No.1 Mobilization and Demobilization</b>				
	Mobilization as for the materials and labour force required to execute the work including site clearance before handover of the work after completion	Ls	1		
	<b>Total for Mobilization and de-mobilization</b>				
	<b>Bill No.2 site clearance</b>				
	Clear the site by cutting trees, tree stumps, thickets, grass, shrubs etc to make is sufficient for establishment	M2	481		
	<b>Total for site Clearance</b>				
	<b>Bill No. 3 Excavation and Earthworks</b>				
1	Excavate foundation trenches 0.6m wide and not exceeding 0.8 deep	M3	69.82		
2	Fill around foundation walls using selected excavated materials and compact well as required	M3	16.94		
3	Fill the foundation bed using imported quality marrum compact well in layers of 400mm thick	M3	121.99		
4	load and cartaway surplus excavated materials	M3	3.49		
	<b>Total for excavation and Earthworks</b>				
	<b>Bill No. 4 Anti- termite treatment</b>				
	Supply and spread to stabilized compacted floor areas, tops of foundation walls as aldres or equally approved intercide treatment.	M3	305.97		
	<b>Total for Anti-termite treatment</b>				
	<b>Bill No. 5 Concrete work</b>				
	Supply and place concrete grade 20 in the excavated holes to hold firm the position teak poles	M	5.47		

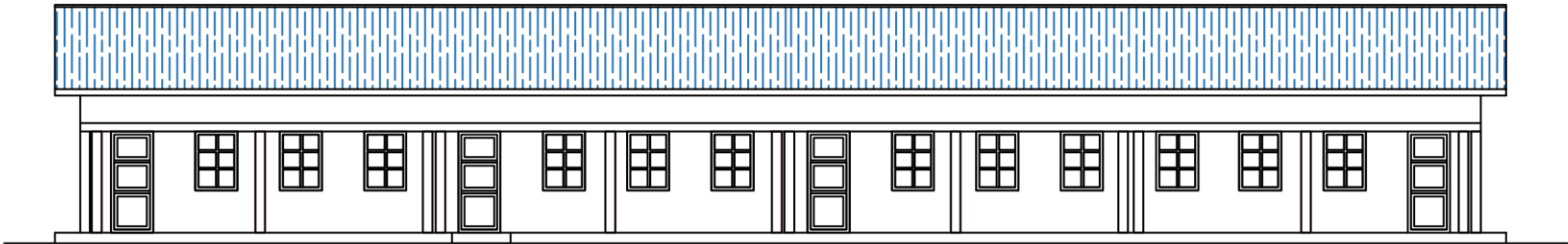
	<b>Total for concrete Work</b>				
	<b><u>Bill No. 6 Masonry work</u></b>				
1	Build substructure walls 230mm thick using burnt red bricks with joints tied using mortar mixed lot ratio C.S 1:4	M	174.54		
2	Ditto for apron walls 100mm	M	101.64		
3	Plaster the apron walls 30mm thick using mortar well finished using wooden float including the top of the plinth walls	M	101.64		
	<b>Total for Masonry work</b>				
	<b><u>Bill No.7 Superstructure</u></b>				
1	Supply and fix teak offcuts as wall coverings for superstructure fixed on 100x50mm timbers placed horizontally including nails and hoop irons	M	188		
2	Supply and position teak poles of dia 150mm as columns and cast them to make firm	No	76		
	<b>Total for superstructure</b>				
	<b><u>Bill No.8 Roofing construction</u></b>				
	<b>Timbers used for construction works shall be well seasoned to the required specifications rates shall include nails and hoop irons</b>				
1	Supply and fix wall plates 150x75mm	M	118		
2	Supply and fix 150x50mm rafters @ 1.6m intervals	M	215		
3	Supply and fix struts and ties 100x50mm	M	118		
4	Supply and fix purlins 75x50mm	M	410		
	<b><u>Covers</u></b>				
5	Supply and fix g28 pre-painted super five profiled roofing sheets (0.32mm) of approved colour	M	348.33		
6	Supply and fix G28 pre-painted ridge cap 650mm girth (average) in position complete with all necessary roofing screws or nails as required	M	34.15		
	<b><u>Valance/Barge board</u></b>				
7	225x25mm high timber valance board/board fixed on to the edge of rafters including necessary fittings	M	88.7		
	<b>Total for Roof Construction</b>				
	<b><u>Bill No.9 Doors and Windows</u></b>				

1	Supply and fix 1000x2100mm locally made door with 2"x3" timber frame and iron sheet panel	No.	4		
2	Supply and 1200x1500mm wide locally made windows with 2"x3" timber frame, wire mesh and iron sheet panel	No.	28		
	Total for Doors and Windows				
	<b>Bill No. 10 Painting work</b>				
1	Supply and apply 3 coats of emulsion paint(white) on the fixed fascia board	M	20.17		
2	Ditto but oil paint to the fixed doors and windows	M	98.24		
	<b>Total for paintworks</b>				
	<b>Bill No.11 Blackboard</b>				
	Supply and fix plywood of dimension 1200x2400mm well painted black as blackboard	M	2.88		
	<b>Total for Blackboard</b>				

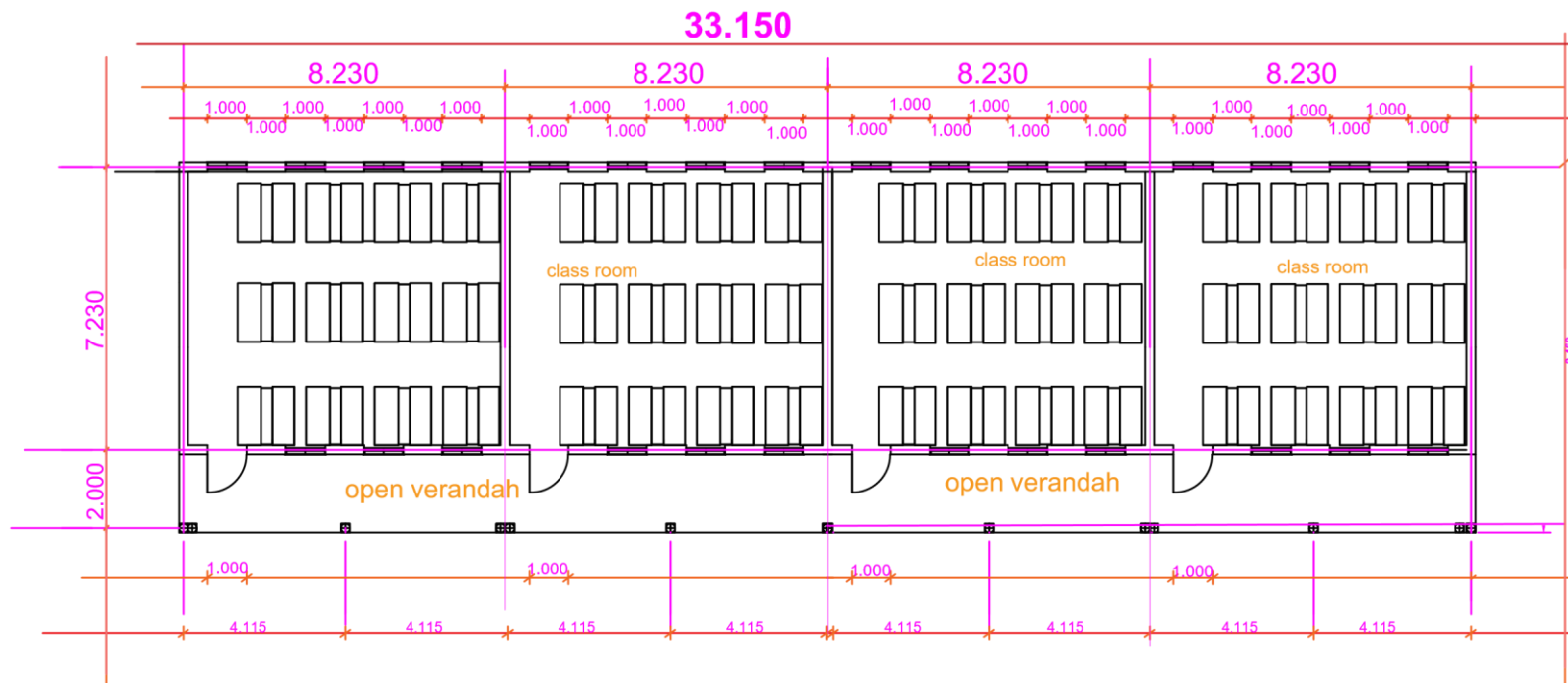
*ANNEXE III: **DESIGNS AND DRAWINGS FOR LOT #3: SDS/162/2021-A: CONSTRUCTION OF ONE (1) TEMPORARY LEARNING SPACE IN BASWERA PRIMARY SCHOOL.***



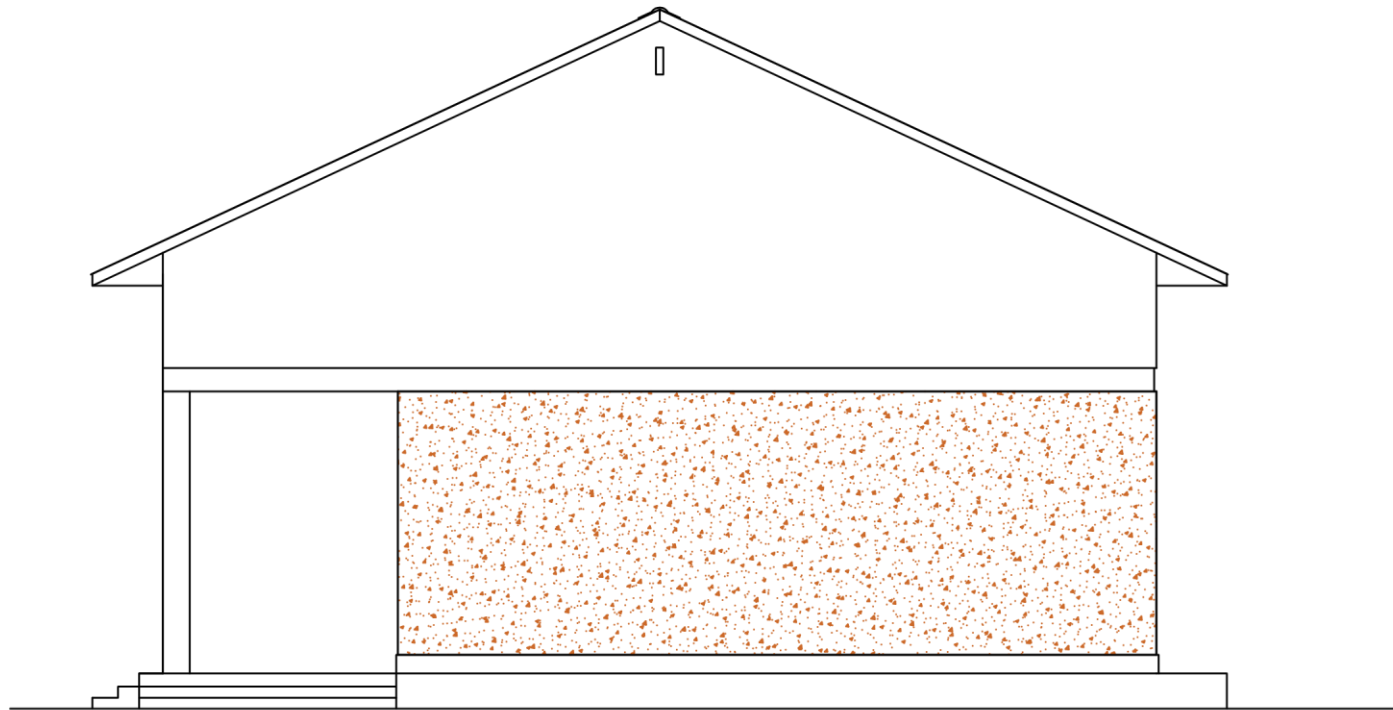
BACK ELEVATION



FRONT ELEVATION

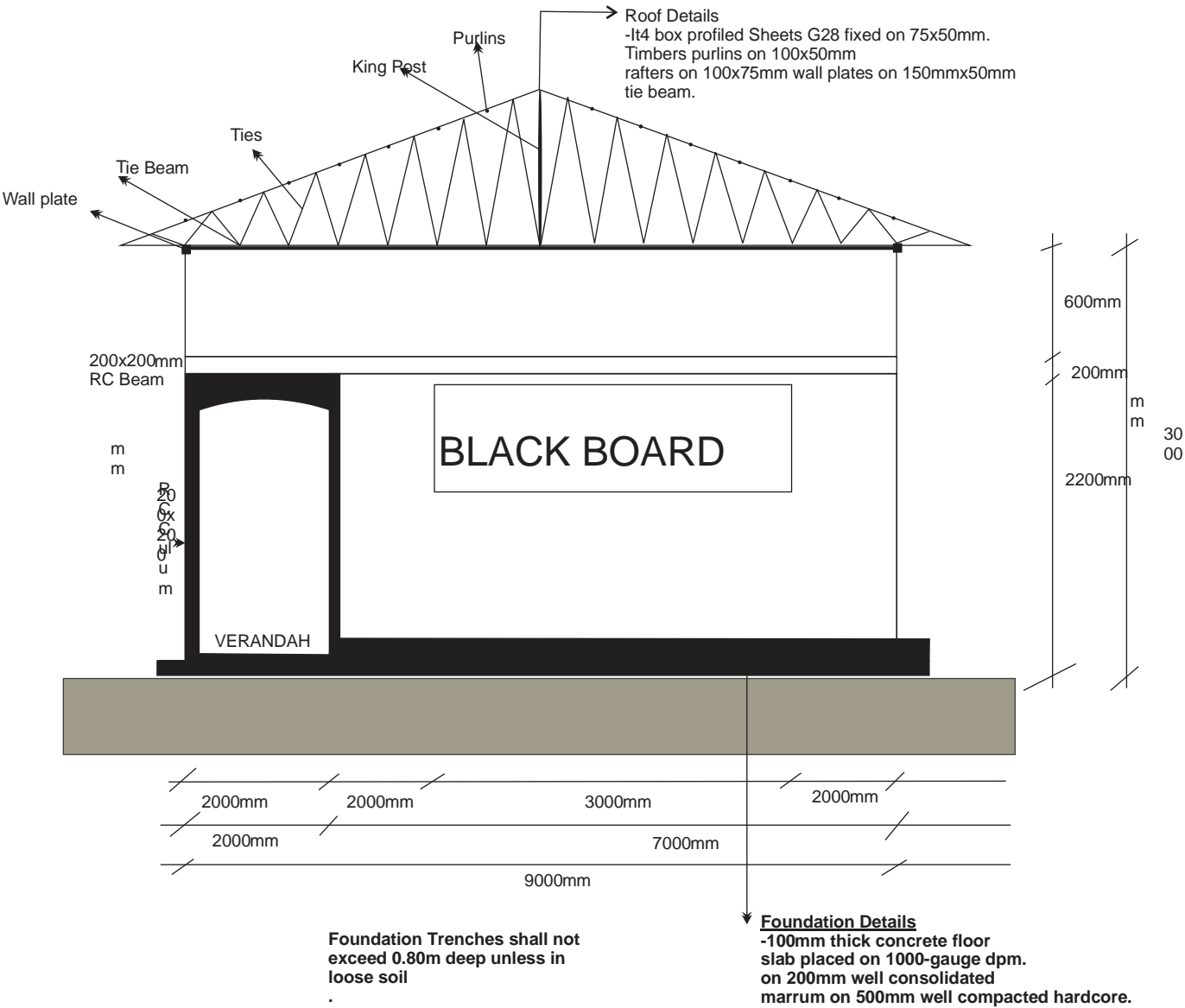


GROUND FLOOR  
SCALE 1:100



SIDE ELEVATION





**ANNEXE IV: BOQ FOR LOT #4: SDS/162/2021-B: CONSTRUCTION OF ONE (1) TEMPORARY LEARNING SPACE IN RIIRANGU PRIMARY SCHOOL.**

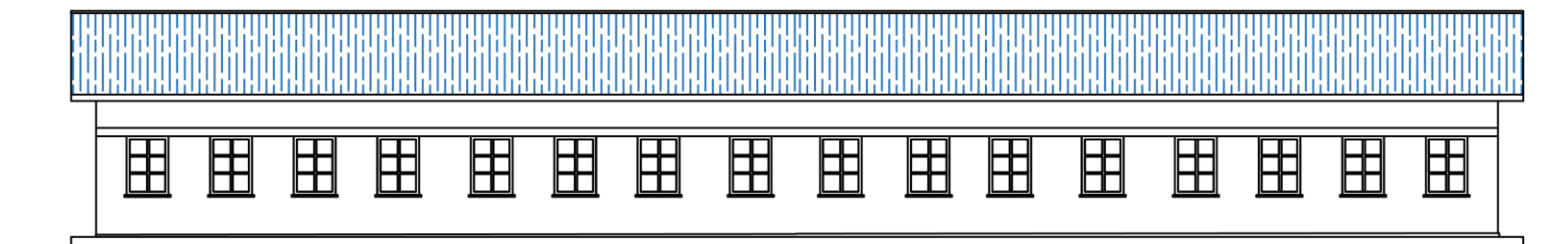
**Table 4: Bill of Quantities for the construction of proposed semi-permanent 1 Block 4 Classrooms**

S/N	Items Description	Unit	QTY	Unit Cost (USD)	Total Cost (USD)
	<b>Note</b>				
	The rate shall include supply of materials and labour cost required to execute the work, unless stated in the Items	Note	Note		
	<b>Bill No.1 Mobilization and Demobilization</b>				
	Mobilization as for the materials and labour force required to execute the work including site clearance before handover of the work after completion	Ls	1		
	<b>Total for Mobilization and de-mobilization</b>				
	<b>Bill No.2 site clearance</b>				
	Clear the site by cutting trees, tree stumps, thickets, grass, shrubs etc to make is sufficient for establishment	M2	481		
	<b>Total for site Clearance</b>				
	<b>Bill No. 3 Excavation and Earthworks</b>				
1	Excavate foundation trenches 0.6m wide and not exceeding 0.8 deep	M3	69.82		
2	Fill around foundation walls using selected excavated materials and compact well as required	M3	16.94		
3	Fill the foundation bed using imported quality marrum compact well in layers of 400mm thick	M3	121.99		
4	load and cartaway surplus excavated materials	M3	3.49		
	<b>Total for excavation and Earthworks</b>				
	<b>Bill No. 4 Anti- termite treatment</b>				
	Supply and spread to stabilized compacted floor areas, tops of foundation walls as aldres or equally approved intercide treatment.	M3	305.97		
	<b>Total for Anti-termite treatment</b>				
	<b>Bill No. 5 Concrete work</b>				

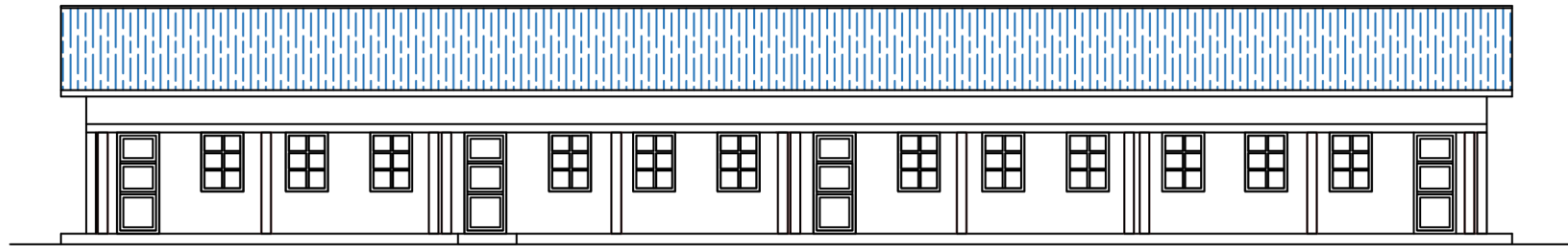
	Supply and place concrete grade 20 in the excavated holes to hold firm the position teak poles	M	5.47		
	<b>Total for concrete Work</b>				
	<b>Bill No. 6 Masonry work</b>				
1	Build substructure walls 230mm thick using burnt red bricks with joints tied using mortar mixed lot ratio C.S 1:4	M	174.54		
2	Ditto for apron walls 100mm	M	101.64		
3	Plaster the apron walls 30mm thick using mortar well finished using wooden float including the top of the plinth walls	M	101.64		
	<b>Total for Masonry work</b>				
	<b>Bill No.7 Superstructure</b>				
1	Supply and fix teak offcuts as wall coverings for superstructure fixed on 100x50mm timbers placed horizontally including nails and hoop irons	M	188		
2	Supply and position teak poles of dia 150mm as columns and cast them to make firm	No	76		
	<b>Total for superstructure</b>				
	<b>Bill No.8 Roofing construction</b>				
	<b>Timbers used for construction works shall be well seasoned to the required specifications rates shall include nails and hoop irons</b>				
1	Supply and fix wall plates 150x75mm	M	118		
2	Supply and fix 150x50mm rafters @ 1.6m intervals	M	215		
3	Supply and fix struts and ties 100x50mm	M	118		
4	Supply and fix purlins 75x50mm	M	410		
	<b>Covers</b>				
5	Supply and fix g28 pre-painted super five profiled roofing sheets (0.32mm) of approved colour	M	348.33		
6	Supply and fix G28 pre-painted ridge cap 650mm girth (average) in position complete with all necessary roofing screws or nails as required	M	34.15		
	<b>Valance/Barge board</b>				

7	225x25mm high timber valance board/board fixed on to the edge of rafters including necessary fittings	M	88.7		
	<b>Total for Roof Construction</b>				
	<b>Bill No.9 Doors and Windows</b>				
1	Supply and fix 1000x2100mm locally made door with 2"x3" timber frame and iron sheet panel	No.	4		
2	Supply and 1200x1500mm wide locally made windows with 2"x3" timber frame, wire mesh and iron sheet panel	No.	28		
	Total for Doors and Windows				
	<b>Bill No. 10 Painting work</b>				
1	Supply and apply 3 coats of emulsion paint(white) on the fixed fascia board	M	20.17		
2	Ditto but oil paint to the fixed doors and windows	M	98.24		
	<b>Total for paintworks</b>				
	<b>Bill No.11 Blackboard</b>				
	Supply and fix plywood of dimension 1200x2400mm well painted black as blackboard	M	2.88		
	<b>Total for Blackboard</b>				

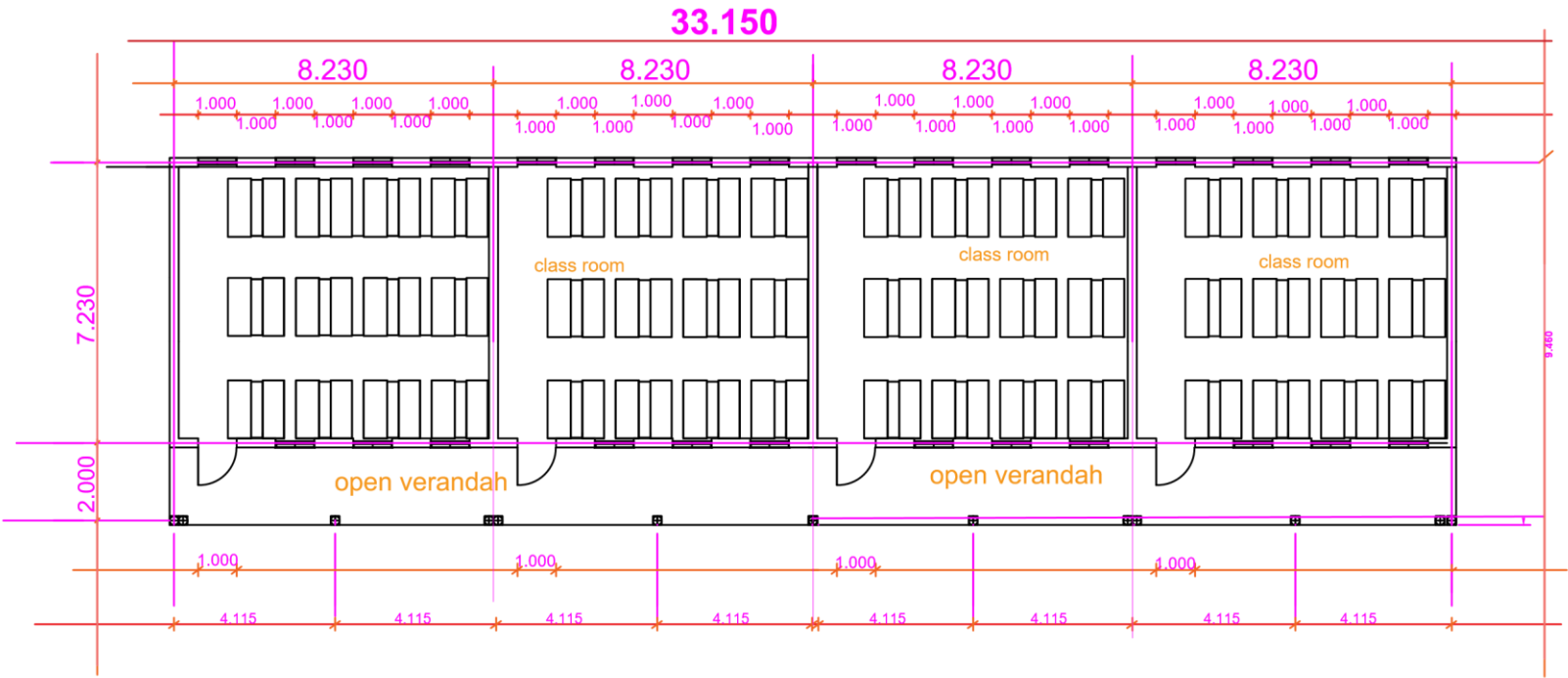
*ANNEXE IV: **DESIGNS AND DRAWINGS FOR LOT #4: SDS/162/2021-B:** CONSTRUCTION OF ONE (1) TEMPORARY LEARNING SPACE IN RIIRANGU PRIMARY SCHOOL.*



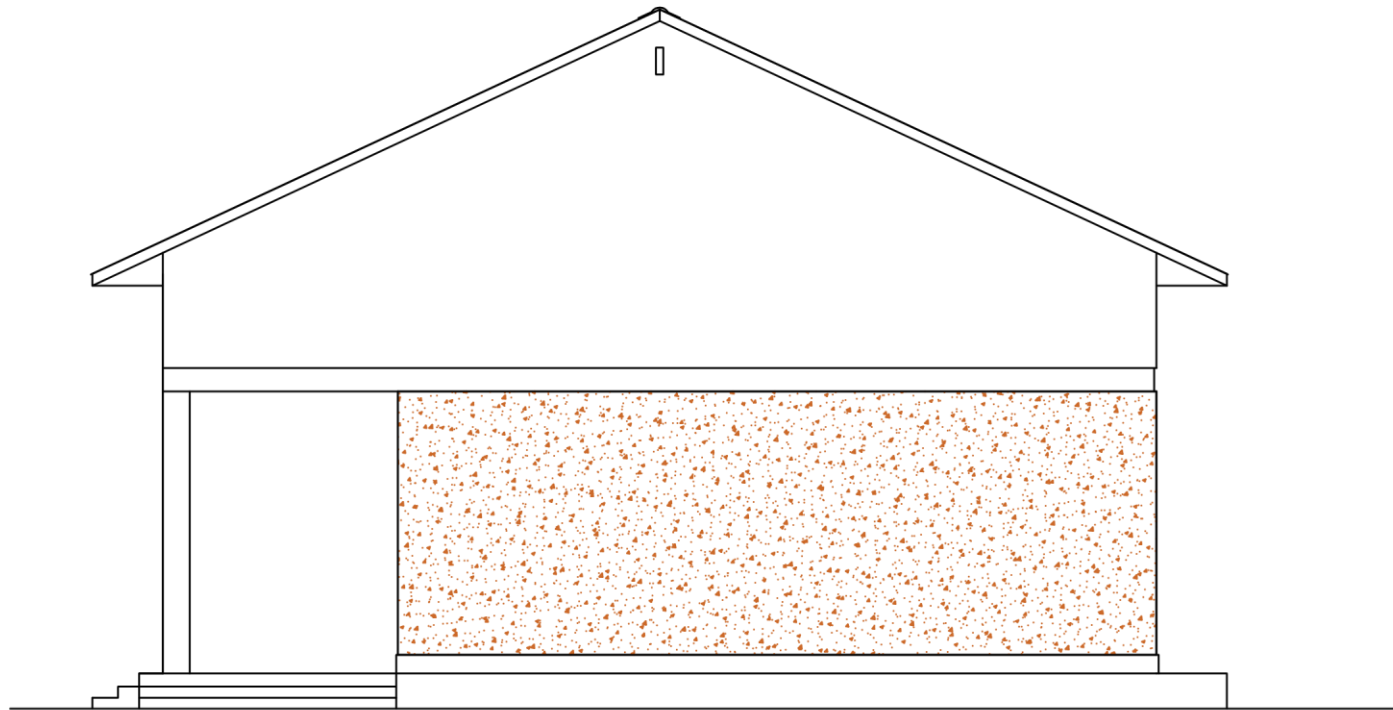
BACK ELEVATION



FRONT ELEVATION

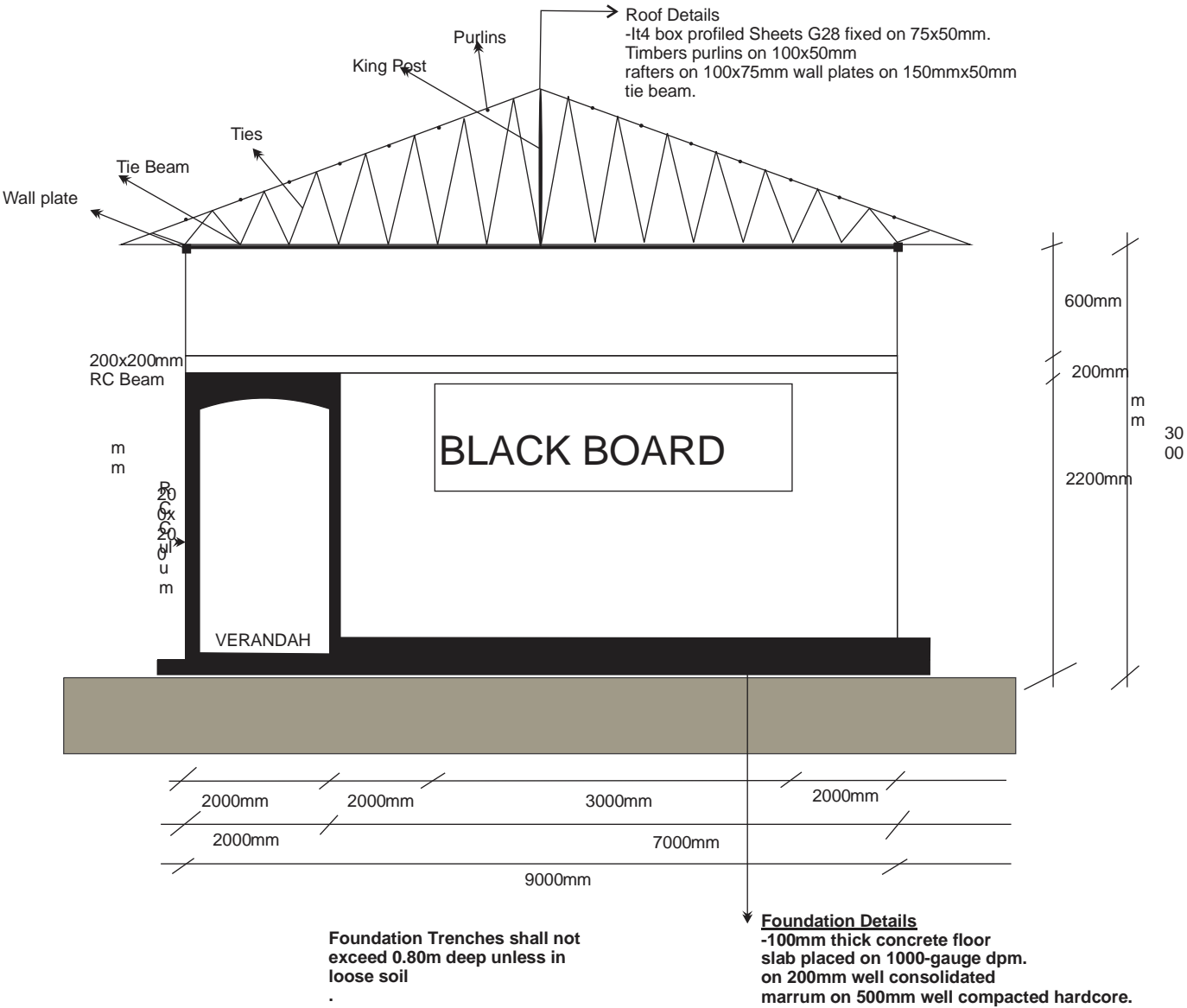


GROUND FLOOR  
SCALE 1:100



SIDE ELEVATION





**ANNEXE V: *BOQ FOR LOT #5: SDS/162/2021-C: CONSTRUCTION OF ONE (1) TEMPORARY LEARNING SPACE IN BAZUMBURU PRIMARY SCHOOL.***

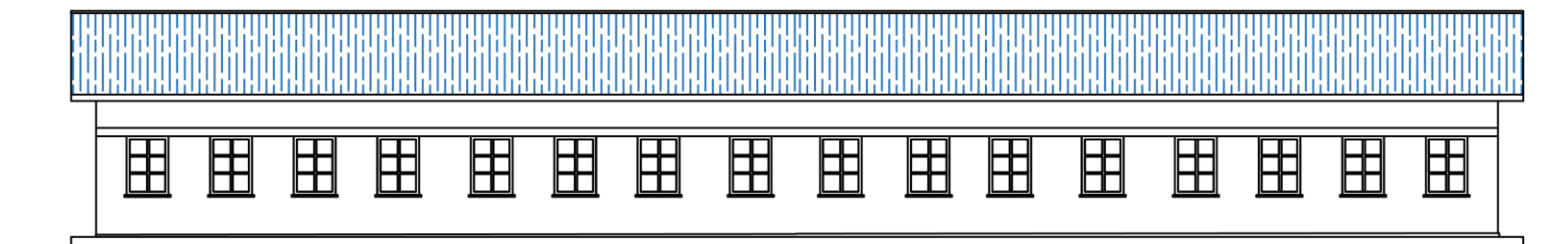
**Table 5: Bill of Quantities for the construction of a proposed semi-permanent 1 Block 4 Classrooms.**

S/N	Items Description	Unit	QTY	Unit Cost (USD)	Total Cost (USD)
	<b>Note</b>				
	The rate shall include supply of materials, and labour cost required to execute the work, unless stated in the Items	Note	Note		
	<b>Bill No.1 Mobilization and Demobilization</b>				
	Mobilization as for the materials and labour force required to execute the work including site clearance before handover of the work after completion	Ls	1		
	<b>Total for Mobilization and de-mobilization</b>				
	<b>Bill No.2 site clearance</b>				
	Clear the site by cutting trees, tree stumps, thickets, grass, shrubs etc to make is sufficient for establishment	M2	481		
	<b>Total for site Clearance</b>				
	<b><u>Bill No. 3 Excavation and Earthworks</u></b>				
1	Excavate foundation trenches 0.6m wide and not exceeding 0.8 deep	M3	69.82		
2	Fill around foundation walls using selected excavated materials and compact well as required	M3	16.94		
3	Fill the foundation bed using imported quality marrum compact well in layers of 400mm thick	M3	121.99		
4	load and cartaway surplus excavated materials	M3	3.49		
	<b>Total for excavation and Earthworks</b>				
	<b>Bill No. 4 Anti- termite treatment</b>				
	Supply and spread to stabilized compacted floor areas, tops of foundation walls as aldres or equally approved intercide treatment.	M3	305.97		
	<b>Total for Anti-termite treatment</b>				
	<b><u>Bill No. 5 Concrete work</u></b>				

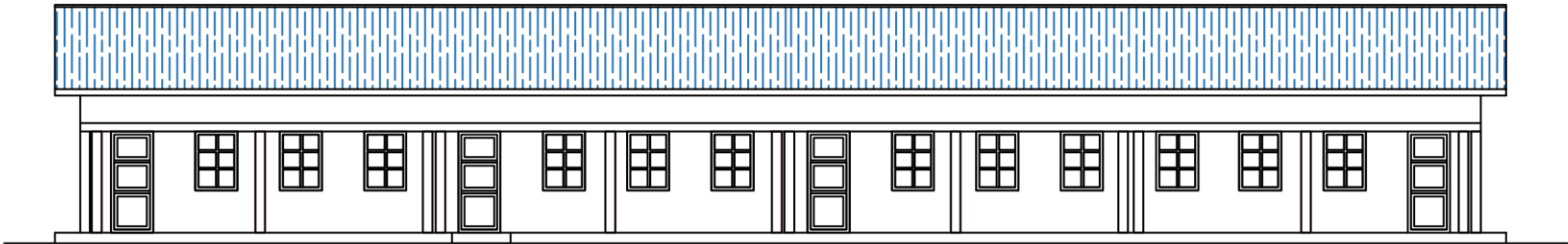
	Supply and place concrete grade 20 in the excavated holes to hold firm the position teak poles	M	5.47		
	<b>Total for concrete Work</b>				
	<b><u>Bill No. 6 Masonry work</u></b>				
1	Build substructure walls 230mm thick using burnt red bricks with joints tied using mortar mixed lot ratio C.S 1:4	M	174.54		
2	Ditto for apron walls 100mm	M	101.64		
3	Plaster the apron walls 30mm thick using mortar well finished using wooden float including the top of the plinth walls	M	101.64		
	<b>Total for Masonry work</b>				
	<b><u>Bill No.7 Superstructure</u></b>				
1	Supply and fix teak offcuts as wall coverings for superstructure fixed on 100x50mm timbers placed horizontally including nails and hoop irons	M	188		
2	Supply and position teak poles of dia 150mm as columns and cast them to make firm	No	76		
	<b>Total for superstructure</b>				
	<b><u>Bill No.8 Roofing construction</u></b>				
	<b>Timbers used for construction works shall be well seasoned to the required specifications rates shall include nails and hoop irons</b>				
1	Supply and fix wall plates 150x75mm	M	118		
2	Supply and fix 150x50mm rafters @ 1.6m intervals	M	215		
3	Supply and fix struts and ties 100x50mm	M	118		
4	Supply and fix purlins 75x50mm	M	410		
	<b><u>Covers</u></b>				
5	Supply and fix g28 pre-painted super five profiled roofing sheets (0.32mm) of approved colour	M	348.33		
6	Supply and fix G28 pre-painted ridge cap 650mm girth (average) in position complete with all necessary roofing screws or nails as required	M	34.15		
	<b><u>Valance/Barge board</u></b>				

7	225x25mm high timber valance board/board fixed on to the edge of rafters including necessary fittings	M	88.7		
	<b>Total for Roof Construction</b>				
	<b>Bill No.9 Doors and Windows</b>				
1	Supply and fix 1000x2100mm locally made door with 2"x3" timber frame and iron sheet panel	No.	4		
2	Supply and 1200x1500mm wide locally made windows with 2"x3" timber frame, wire mesh and iron sheet panel	No.	28		
	Total for Doors and Windows				
	<b>Bill No. 10 Painting work</b>				
1	Supply and apply 3 coats of emulsion paint(white) on the fixed fascia board	M	20.17		
2	Ditto but oil paint to the fixed doors and windows	M	98.24		
	<b>Total for paintworks</b>				
	<b>Bill No.11 Blackboard</b>				
	Supply and fix plywood of dimension 1200x2400mm well painted black as blackboard	M	2.88		
	<b>Total for Blackboard</b>				

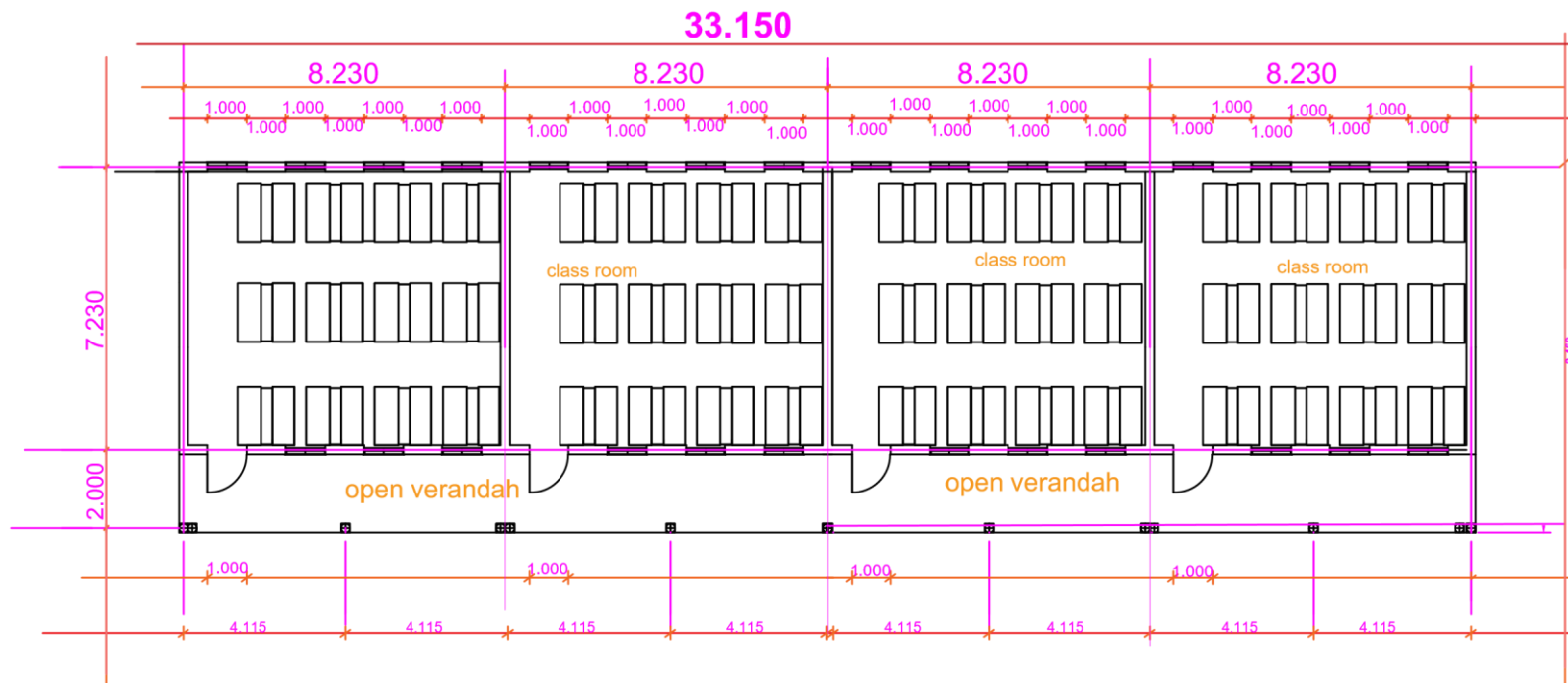
**ANNEXE V: *DESIGNS AND DRAWINGS FOR LOT #5: SDS/162/2021-C: CONSTRUCTION OF ONE (1) TEMPORARY LEARNING SPACE IN BAZUMBURU PRIMARY SCHOOL.***



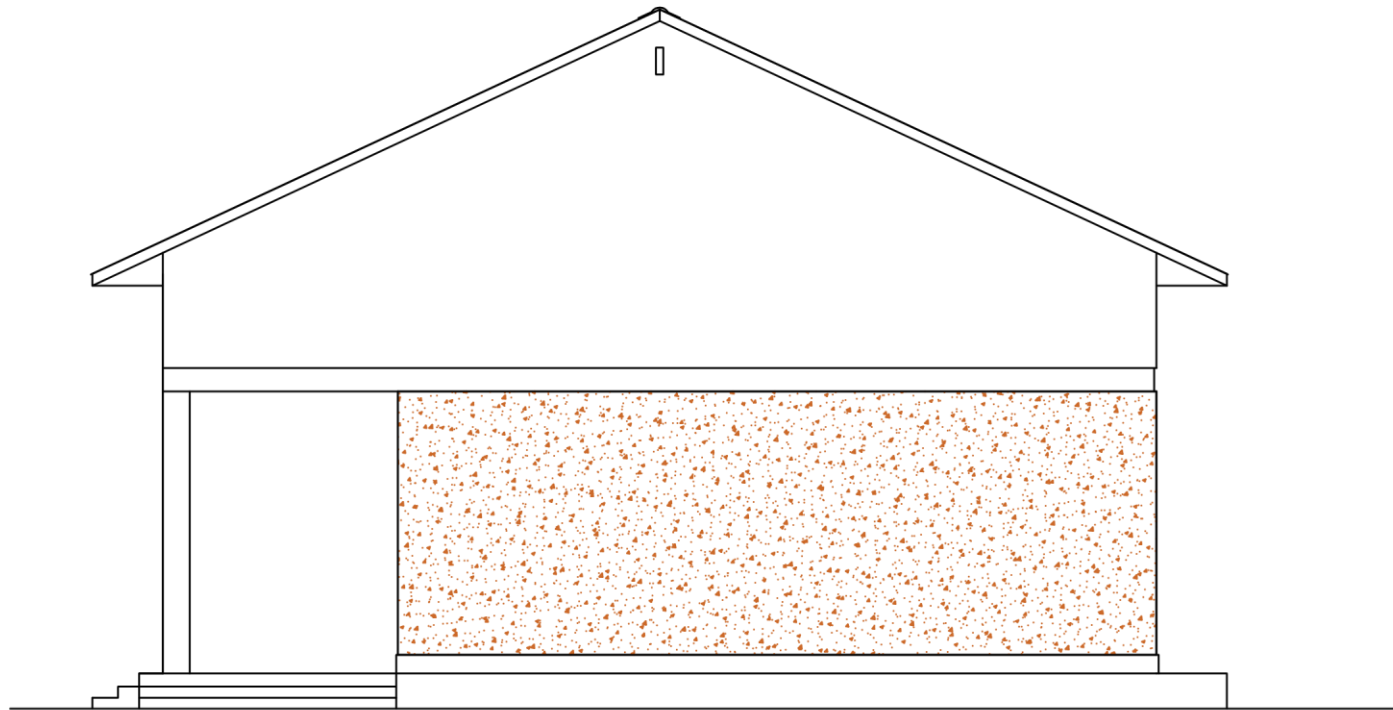
BACK ELEVATION



FRONT ELEVATION

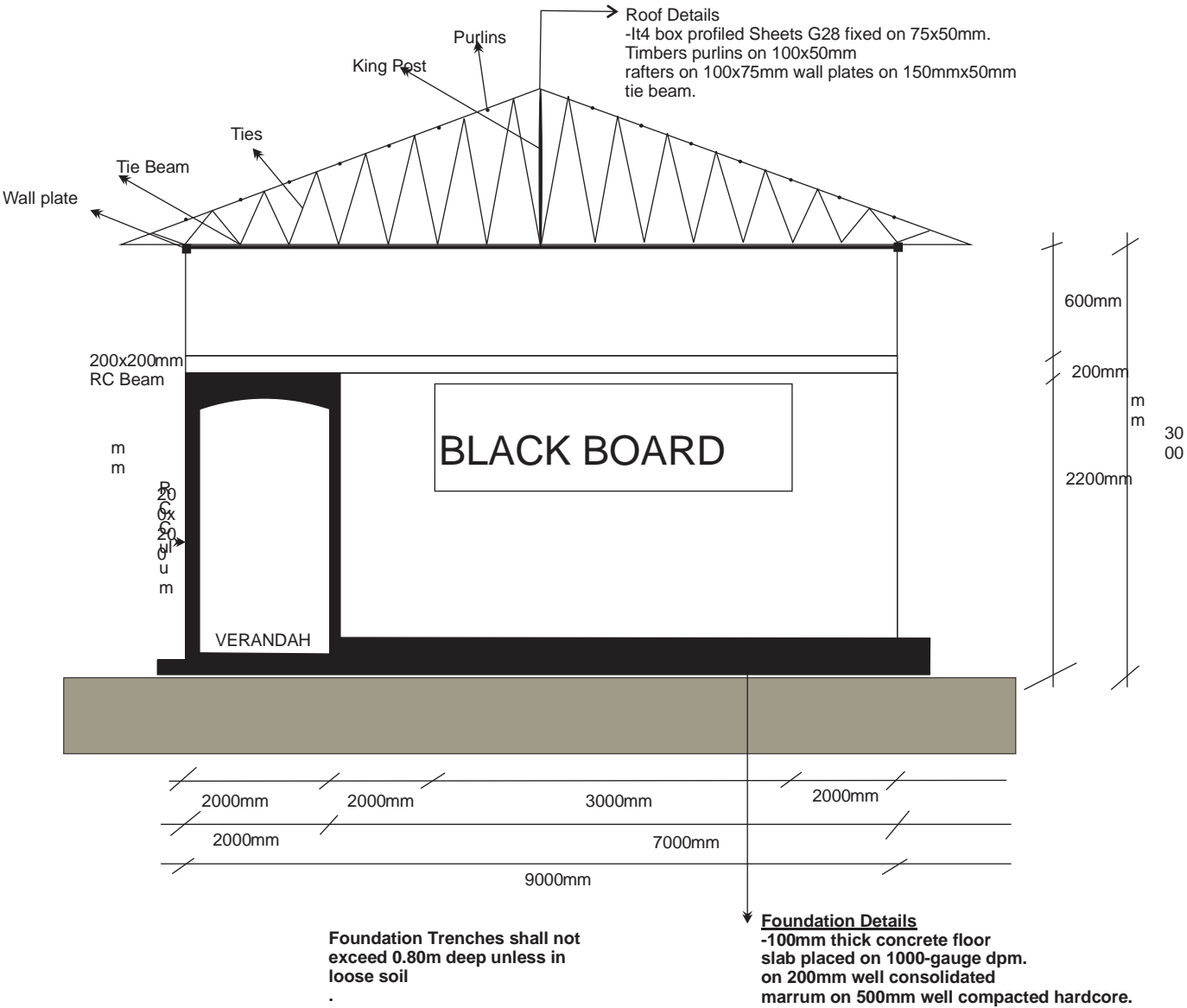


GROUND FLOOR  
SCALE 1:100



SIDE ELEVATION





**ANNEXE VI: *BOQ FOR LOT #6: SDS/162/2021-D: CONSTRUCTION OF THREE BLOCKS OF LATRINES IN KING'S COLLEGE IN YAMBIO.***

**Table 6: Bills of quantities for the construction of a proposed 1 block 4 stance and 1 stance for the disabled-King's College Secondary School GIRLS' Toilet**

s/n	description	units	qty	Unit Cost (USD)	Total Cost (USD)
	<b>Note:</b> - the rates shall include supply of materials and labor cost required to execute the work. <b>Unless</b> stated in the item.	note	note		
	<b>Bill no. 1: - mobilization</b>				
-	Mobilize for materials and labor force needed to execute the work.	LS	-		
	<b>Total for mobilization</b>				
	<b>Bill no. 2: - sit clearance</b>				
-	Clear the site by cutting tree stumps, shrubs, bushes, thickets etc to make it sufficient for site establishment	M2	64.4		
	<b>Total for site clearance</b>				
	<b>Bill no. 3: - excavation and earthworks</b>				
-	Excavate pit of dimensions 4000mm long and 1200mm wide by 4000mm deep.	M3	19.2		
-	Excavate foundation trenches 0.5m wide and not exceeding 0.7m deep	M3	11.42		
-	Fill around foundation walls using selected excavated materials and compact well as required.	M3	1.06		
-	Load and spread surplus excavated materials within the site as will be directed by the supervising engineer	M3	6.84		
	<b>Total for excavations and earthworks</b>				
	<b>Bill no. 4: - anti-termite treatment</b>				
-	Supply and spread anti-termite solution as aidrex or its approved equivalent on the foundation plinth walls and its foundations	M2	8.32		
	<b>Total for ant-termite treatment</b>				
	<b>Bill no. 5: - thermal and moisture protection</b>				
-	Supply and spread damp proof course (DPC) on the casted suspended slab to receive superstructure walls	m	25.2		
	<b>Total for thermal and moisture protection</b>				
	<b>Bill no. 6: - masonry work</b>				

-	Build super structure walls 230mm thick using well burnt red bricks with joints tied using mortar mix ratio c/s 1:4	M2	20.8		
-	Ditto but super structure walls	M2	75.6		
	<b>Total for masonry work</b>				
	<b>Bill no.7: - concrete work</b>				
-	Prepare and place concrete grade 1:2:4 to the suspended floor slab	M3	2.9		
-	Ditto but to the R.C beams lintels	M3	0.8		
-	Ditto but to the ramps	M3	1.02		
-	Supply and place concrete grade 1:3:6 to the aprons	M3	0.4		
	<b>Total for concrete work</b>				
	<b>Bill no. 8: - reinforcement/steel work</b>				
-	Supply, cut, bend, fi/hoist the reinforcement as required				
	- 12mm high yield bars for the suspended floor slab R.C beams (both lower and upper beams)	kgs	253.44		
	- Supply and place BRC A142 mesh fabric to verandah and ramps	kgs	15.56		
	<b>Total for reinforcement/steel work</b>				
	<b>Bill no. 9: -</b>				
-	Supply and prepare timbers for formwork to the suspended floor slab, R.C beams, lintels, and scaffoldings				
	- 300 x 25mm timbers	m	54		
	- 225 x 25mm timbers	m	16		
	- 100 x 50mm timbers	m	30		
	<b>Total for formwork</b>				
	<b>Bill no. 10: - wall and floor finishes</b>				
-	Plaster both external and internal walls	M2	151.2		
-	Supply and fix concrete vents to all stances	M2	3		
-	Introduce floor screed to the floors well finished smooth using cement slurry.	M2	14.56		
-	Plaster the aprons and the ramps finished semi-rough	M2	20.8		
	<b>Total for walls and floor finishes</b>				

	<b>Bill no. 11 roof construction</b>				
-	Construct the roof structure using well sawn timbers with moisture content not exceeding 16%.				
	<b>Timbers</b>				
	- 75 x 50mm timbers for the purlins	m	18.4		
	- 100 x 50mm timbers for wall plates, trusses, ties, and struts including tie beams	m	50.0		
	- 225 x 25mm timbers well planned and grooved to fit for fascial boards	m	17.66		
	<b>Covers</b>				
	- Supply and fix IT4 BOX profile G28 sheets on the fixed purlins	M2	12.35		
	- Supply and fix 100mm dia PVC pipe as vent pipe complete fixed with a fly screen.	m	20		
	- Supply and fix metallic holders on both sides of the walls in the disabled toilet	No	2		
	- Supply and fix insect proof mesh wire in all fixed ventilations	M2	0.3		
	<b>Total for roof construction</b>				
	<b>Bill no 12: - doors and windows</b>				
-	Supply and fix metallic doors of dimensions 2100mm by 1000mm	No	5		
	<b>total for doors and windows</b>				
	<b>Bill no. 13: - paint work and decoration</b>				
-	paint the internal walls with 3 coats of internal quality emulsion paint of approved color	M2	94.8		
-	paint the external walls with 3 coats of quality external emulsion paints of approved color	M2	56.4		
-	paint the doors with 3 coats of quality oil premier paints	M2	21		
	<b>total for paint and decoration</b>				
	<b>total summary for 1 block 4 stances and 1 stance for the disabled.</b>				

Table 7: Bills of quantities for the construction of a proposed 1 block 5 stance and 1 stance for the disabled-King's College Secondary School BOYS' Toilet

s/n	description	units	qty	Unit Cost (USD)	Total Cost (USD)
-----	-------------	-------	-----	-----------------	------------------

	<b>Note:</b> - the rates shall include supply of materials and labor cost required to execute the work. <b>Unless</b> stated in the item.	note	note		
	<b>Bill no. 1: - mobilization</b>				
-	Mobilize for materials and labor force needed to execute the work.	LS	-		
	<b>Total for mobilization</b>				
	<b>Bill no. 2: - sit clearance</b>				
-	Clear the site by cutting tree stumps, shrubs, bushes, thickets etc to make it sufficient for site establishment	M2	81.6		
	<b>Total for site clearance</b>				
	<b>Bill no. 3: - excavation and earthworks</b>				
-	Excavate pit of dimensions 4000mm long and 1200mm wide by 4000mm deep.	M3	23.04		
-	Excavate foundation trenches 0.5m wide and not exceeding 0.7m deep	M3	13.70		
-	Fill around foundation walls using selected excavated materials and compact well as required.	M3	1.27		
-	Load and spread surplus excavated materials within the site as will be directed by the supervising engineer	M3	8.21		
	<b>Total for excavations and earthworks</b>				
	<b>Bill no. 4: - anti-termite treatment</b>				
-	Supply and spread anti-termite solution as aidrex or its approved equivalent on the foundation plinth walls and its foundations	M2	9.98		
	<b>Total for ant-termite treatment</b>				
	<b>Bill no. 5: - thermal and moisture protection</b>				
-	Supply and spread damp proof course (DPC) on the casted suspended slab to receive superstructure walls	m	30.24		
	<b>Total for thermal and moisture protection</b>				
	<b>Bill no. 6: - masonry work</b>				
-	Build super structure walls 230mm thick using well burnt red bricks with joints tied using mortar mix ratio c/s 1:4	M2	24.96		
-	Ditto but super structure walls	M2	90.72		
	<b>Total for masonry work</b>				
	<b>Bill no.7: - concrete work</b>				

-	Prepare and place concrete grade 1:2:4 to the suspended floor slab	M3	3.48		
-	Ditto but to the R.C beams lintels	M3	0.96		
-	Ditto but to the ramps	M3	1.02		
-	Supply and place concrete grade 1:3:6 to the aprons	M3	0.48		
<b>Total for concrete work</b>					
<b>Bill no. 8: - reinforcement/steel work</b>					
-	Supply, cut, bend, fi/hoist the reinforcement as required				
	- 12mm high yield bars for the suspended floor slab R.C beams (both lower and upper beams)	kgs	304.13		
	- Supply and place BRC A142 mesh fabric to verandah and ramps	kgs	18.67		
<b>Total for reinforcement/steel work</b>					
<b>Bill no. 9: -</b>					
-	Supply and prepare timbers for formwork to the suspended floor slab, R.C beams, lintels, and scaffoldings				
	- 300 x 25mm timbers	m	64.8		
	- 225 x 25mm timbers	m	19.2		
	- 100 x 50mm timbers	m	36		
<b>Total for formwork</b>					
<b>Bill no. 10: - wall and floor finishes</b>					
-	Plaster both external and internal walls	M2	181.44		
-	Supply and fix concrete vents to all stances	M2	3.6		
-	Introduce floor screed to the floors well finished smooth using cement slurry.	M2	17.47		
-	Plaster the aprons and the ramps finished semi-rough	M2	24.96		
<b>Total for walls and floor finishes</b>					
<b>Bill no. 11 roof construction</b>					
-	Construct the roof structure using well sawn timbers with moisture content not exceeding 16%.				
<b>Timbers</b>					
	- 75 x 50mm timbers for the purlins	m	22.08		
	- 100 x 50mm timbers for wall plates, trusses, ties, and struts	m	60		

	including tie beams				
	- 225 x 25mm timbers well planned and grooved to fit for fascial boards	m	21.19		
	<b>Covers</b>				
	- Supply and fix IT4 BOX profile G28 sheets on the fixed purlins	M2	14.82		
	- Supply and fix 100mm dia PVC pipe as vent pipe complete fixed with a fly screen.	m	24		
	- Supply and fix metallic holders on both sides of the walls in the disabled toilet	No	2		
	- Supply and fix insect proof mesh wire in all fixed ventilations	M2	0.36		
	<b>Total for roof construction</b>				
	<b>Bill no 12: - doors and windows</b>				
-	Supply and fix metallic doors of dimensions 2100mm by 1000mm	No	6		
	<b>total for doors and windows</b>				
	<b>Bill no. 13: - paint work and decoration</b>				
-	paint the internal walls with 3 coats of internal quality emulsion paint of approved color	M2	113.76		
-	paint the external walls with 3 coats of quality external emulsion paints of approved color	M2	67.68		
-	paint the doors with 3 coats of quality oil premier paints	M2	25.2		
	<b>total for paint and decoration</b>				
	<b>total summary for 1 block 5 stances and 1 stance for the disabled.</b>				

Table 8: Bills of quantities for the construction of a proposed 1 block 4 stance-King's College Secondary School GIRLS' Toilet No 2 (Part of the 8+1 Stance)

s/n	description	units	qty	Unit Cost (USD)	Total Cost (USD)
	<b>Note:</b> - the rates shall include supply of materials and labor cost required to execute the work. <b>Unless</b> stated in the item.	note	note		
	<b>Bill no. 1: - mobilization</b>				
-	Mobilize for materials and labor force needed to execute the work.	LS	-		
	<b>Total for mobilization</b>				
	<b>Bill no. 2: - sit clearance</b>				

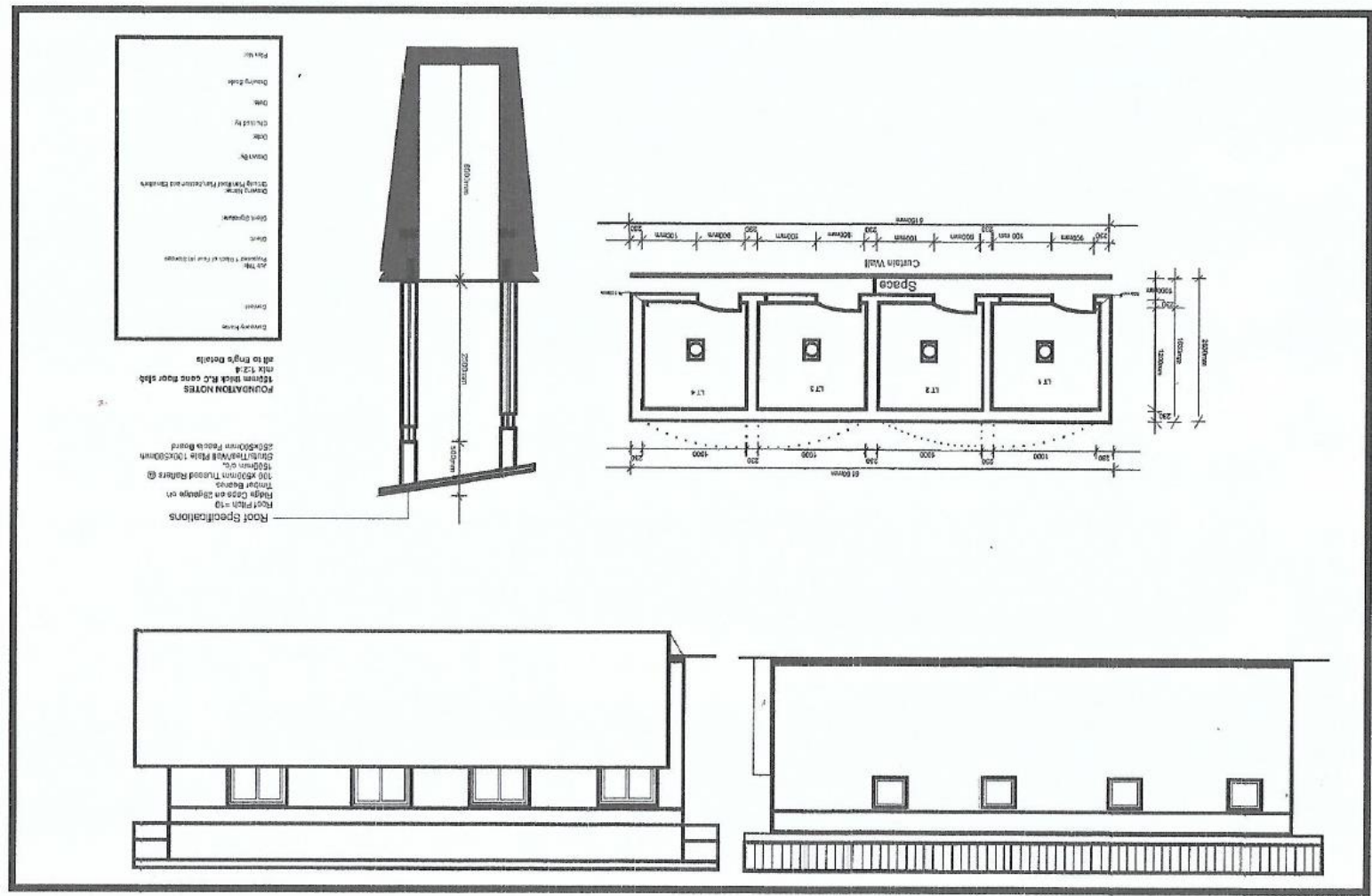
-	Clear the site by cutting tree stumps, shrubs, bushes, thickets etc to make it sufficient for site establishment	M2	54.4		
<b>Total for site clearance</b>					
<b>Bill no. 3: - excavation and earthworks</b>					
-	Excavate pit of dimensions 4000mm long and 1200mm wide by 4000mm deep.	M3	11.2		
-	Excavate foundation trenches 0.5m wide and not exceeding 0.7m deep	M3	6.55		
-	Fill around foundation walls using selected excavated materials and compact well as required.	M3	0.54		
-	Load and spread surplus excavated materials within the site as will be directed by the supervising engineer	M3	3.52		
<b>Total for excavations and earthworks</b>					
<b>Bill no. 4: - anti-termite treatment</b>					
-	Supply and spread anti-termite solution as aidrex or its approved equivalent on the foundation plinth walls and its foundations	M2	6.45		
<b>Total for ant-termite treatment</b>					
<b>Bill no. 5: - thermal and moisture protection</b>					
-	Supply and spread damp proof course (DPC) on the casted suspended slab to receive superstructure walls	m	16		
<b>Total for thermal and moisture protection</b>					
<b>Bill no. 6: - masonry work</b>					
-	Build super structure walls 230mm thick using well burnt red bricks with joints tied using mortar mix ratio c/s 1:4	M2	17.6		
-	Ditto but super structure walls	M2	60.48		
<b>Total for masonry work</b>					
<b>Bill no.7: - concrete work</b>					
-	Prepare and place concrete grade 1:2:4 to the suspended floor slab	M3	2.2		
-	Ditto but to the R.C beams lintels	M3	0.6		
-	Supply and place concrete grade 1:3:6 to the aprons	M3	0.3		
<b>Total for concrete work</b>					
<b>Bill no. 8: - reinforcement/steel work</b>					
-	Supply, cut, bend, fi/hoist the reinforcement as required				
-	12mm high yield bars for the suspended floor slab R.C beams	kgs	126.72		

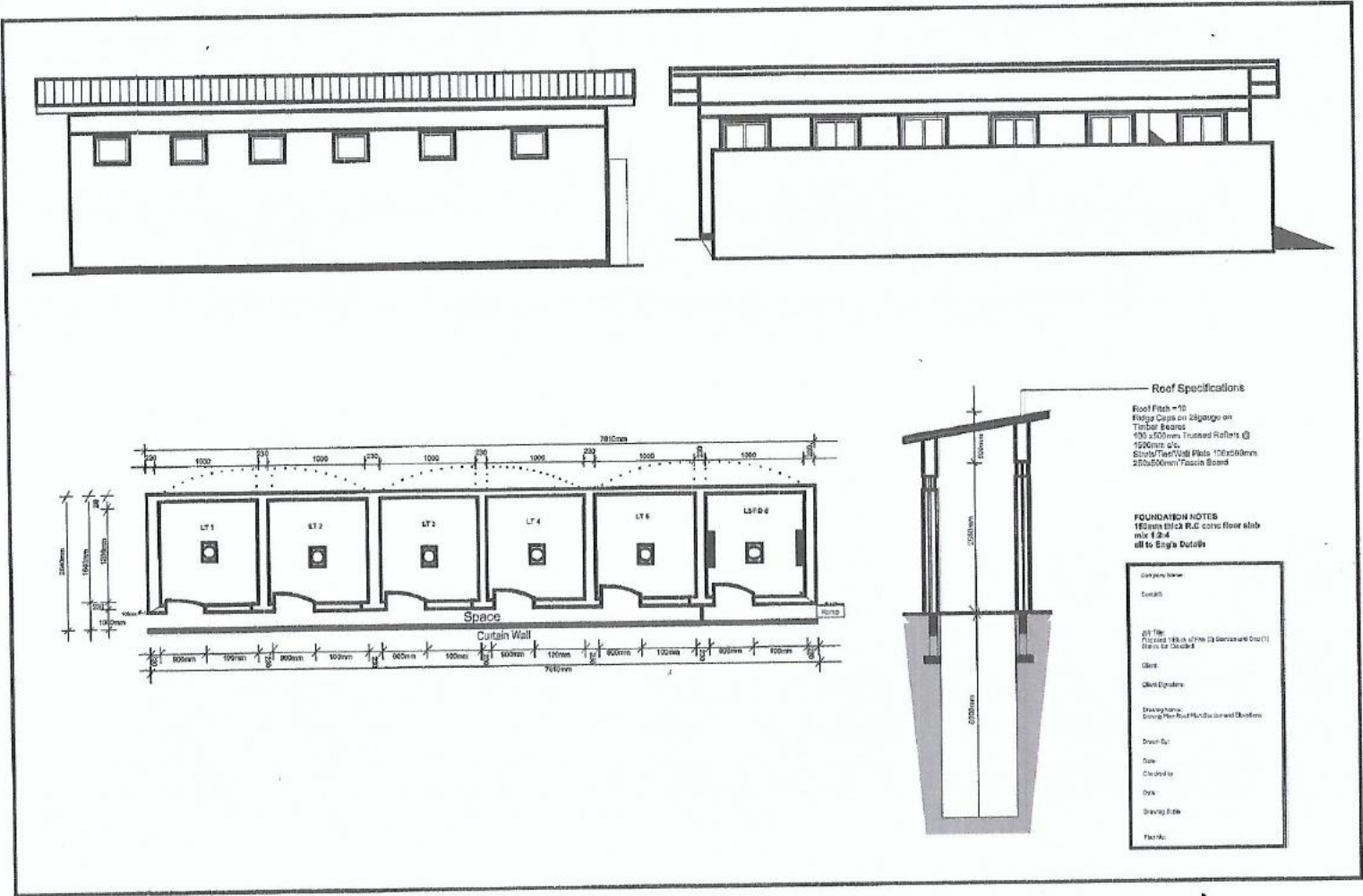


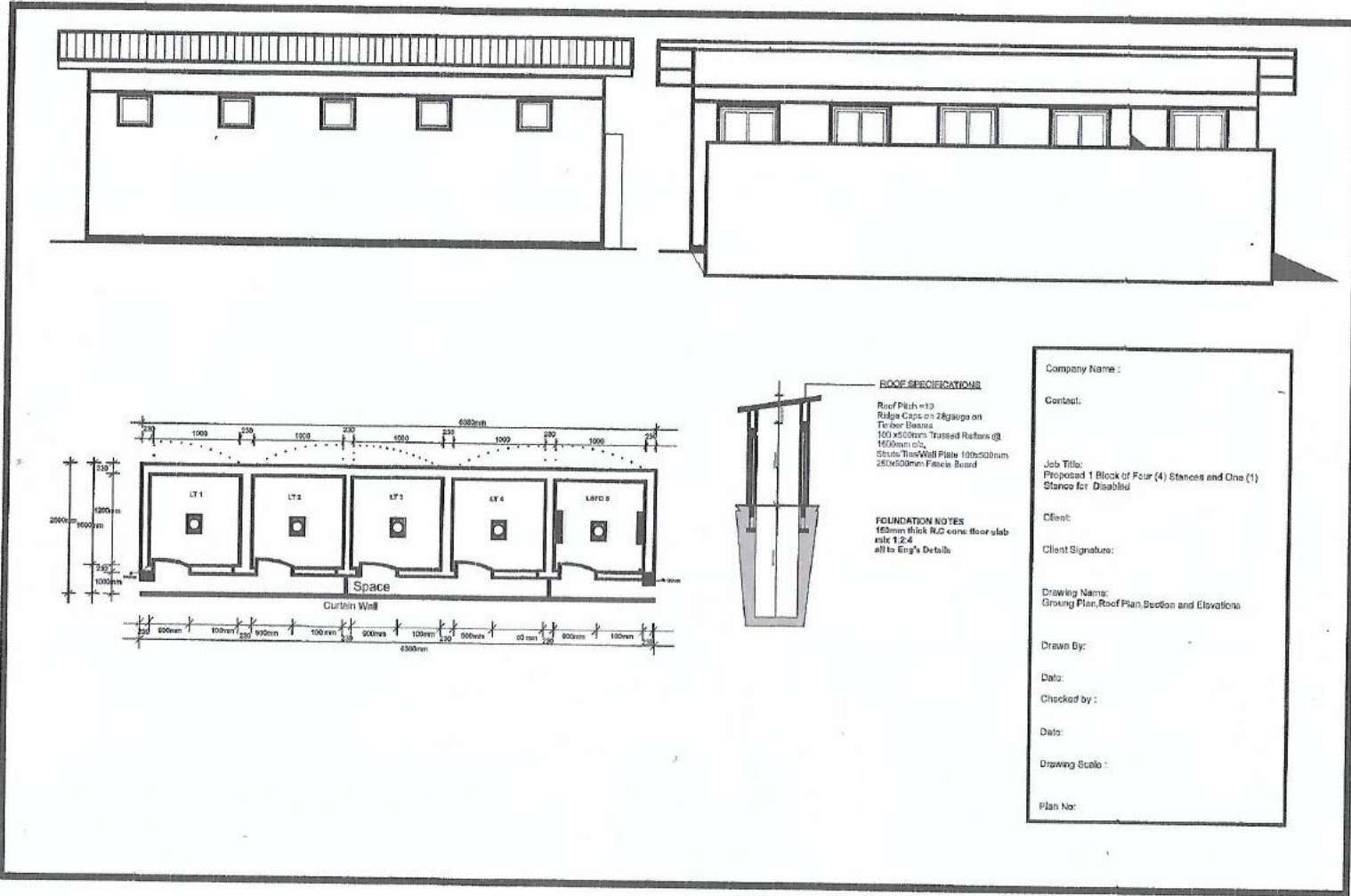
	(both lower and upper beams)				
	- Supply and place BRC A142 mesh fabric to verandah and ramps	kgs	7.78		
	<b>Total for reinforcement/steel work</b>				
	<b>Bill no. 9: -</b>				
-	Supply and prepare timbers for formwork to the suspended floor slab, R.C beams, lintels, and scaffoldings				
	- 300 x 25mm timbers	m	43.2		
	- 225 x 25mm timbers	m	8		
	- 100 x 50mm timbers	m	18		
	<b>Total for formwork</b>				
	<b>Bill no. 10: - wall and floor finishes</b>				
-	Plaster both external and internal walls	M2	120		
-	Supply and fix concrete vents to all stances	M2	2.4		
-	Introduce floor screed to the floors well finished smooth using cement slurry.	M2	11.2		
-	Plaster the aprons and the ramps finished semi-rough	M2	18.2		
	<b>Total for walls and floor finishes</b>				
	<b>Bill no. 11 roof construction</b>				
-	Construct the roof structure using well sawn timbers with moisture content not exceeding 16%.				
	<b>Timbers</b>				
	- 75 x 50mm timbers for the purlins	m	14.72		
	- 100 x 50mm timbers for wall plates, trusses, ties, and struts including tie beams	m	40		
	- 225 x 25mm timbers well planned and grooved to fit for fascial boards	m	14.13		
	<b>Covers</b>				
	- Supply and fix IT4 BOX profile G28 sheets on the fixed purlins	M2	9.88		
	- Supply and fix 100mm dia PVC pipe as vent pipe complete fixed with a fly screen.	m	16		
	- Supply and fix insect proof mesh wire in all fixed ventilations	M2	0.24		

	<b>Total for roof construction</b>				
	<b>Bill no 12: - doors and windows</b>				
-	Supply and fix metallic doors of dimensions 2100mm by 1000mm	No	4		
	<b>total for doors and windows</b>				
	<b>Bill no. 13: - paint work and decoration</b>				
-	paint the internal walls with 3 coats of internal quality emulsion paint of approved color	M2	75.84		
-	paint the external walls with 3 coats of quality external emulsion paints of approved color	M2	45.12		
-	paint the doors with 3 coats of quality oil premier paints	M2	16.8		
	<b>total for paint and decoration</b>				
	<b>total summary for 1 block 4 stances</b>				

ANNEXE VI: **DESIGNS AND DRAWINGS FOR LOT #6: SDS/162/2021-D: CONSTRUCTION OF THREE BLOCKS OF LATRINES IN KING'S COLLEGE IN YAMBIO.**







**ANNEXE VII: *BOQ FOR LOT #7: SDS/162/2021-E: CONSTRUCTION OF ONE BLOCK OF LATRINES IN BANGASI SCHOOL IN YAMBIO.***

**Table 9: Bills of quantities for the construction of a proposed 1 block 5 stance and 1 stance for the disabled-Bangasi Secondary School GIRLS' Toilet**

s/n	description	units	qty	Unit Cost (USD)	Total Cost (USD)
	<b>Note:</b> - the rates shall include supply of materials and labor cost required to execute the work. <b>Unless</b> stated in the item.	note	note		
	<b>Bill no. 1: - mobilization</b>				
-	Mobilize for materials and labor force needed to execute the work.	LS	-		
	<b>Total for mobilization</b>				
	<b>Bill no. 2: - sit clearance</b>				
-	Clear the site by cutting tree stumps, shrubs, bushes, thickets etc to make it sufficient for site establishment	M2	81.6		
	<b>Total for site clearance</b>				
	<b>Bill no. 3: - excavation and earthworks</b>				
-	Excavate pit of dimensions 4000mm long and 1200mm wide by 4000mm deep.	M3	23.04		
-	Excavate foundation trenches 0.5m wide and not exceeding 0.7m deep	M3	13.70		
-	Fill around foundation walls using selected excavated materials and compact well as required.	M3	1.27		
-	Load and spread surplus excavated materials within the site as will be directed by the supervising engineer	M3	8.21		
	<b>Total for excavations and earthworks</b>				
	<b>Bill no. 4: - anti-termite treatment</b>				
-	Supply and spread anti-termite solution as aidrex or its approved equivalent on the foundation plinth walls and its foundations	M2	9.98		
	<b>Total for ant-termite treatment</b>				
	<b>Bill no. 5: - thermal and moisture protection</b>				
-	Supply and spread damp proof course (DPC) on the casted suspended	m	30.24		

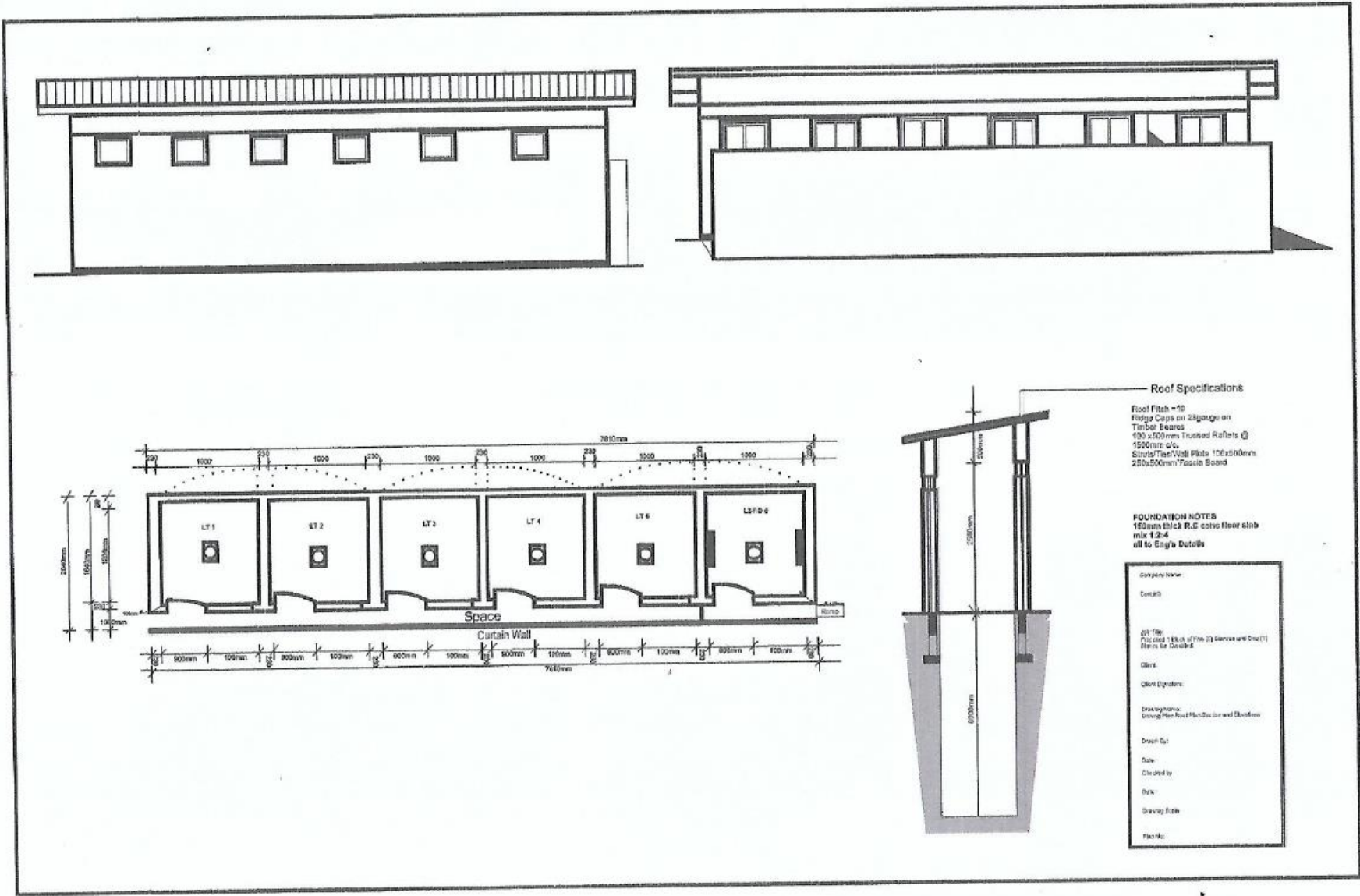
	slab to receive superstructure walls				
	<b>Total for thermal and moisture protection</b>				
	<b>Bill no. 6: - masonry work</b>				
-	Build super structure walls 230mm thick using well burnt red bricks with joints tied using mortar mix ratio c/s 1:4	M2	24.96		
-	Ditto but super structure walls	M2	90.72		
	<b>Total for masonry work</b>				
	<b>Bill no.7: - concrete work</b>				
-	Prepare and place concrete grade 1:2:4 to the suspended floor slab	M3	3.48		
-	Ditto but to the R.C beams lintels	M3	0.96		
-	Ditto but to the ramps	M3	1.02		
-	Supply and place concrete grade 1:3:6 to the aprons	M3	0.48		
	<b>Total for concrete work</b>				
	<b>Bill no. 8: - reinforcement/steel work</b>				
-	Supply, cut, bend, fi/hoist the reinforcement as required				
	- 12mm high yield bars for the suspended floor slab R.C beams (both lower and upper beams)	kgs	304.13		
	- Supply and place BRC A142 mesh fabric to verandah and ramps	kgs	18.67		
	<b>Total for reinforcement/steel work</b>				
	<b>Bill no. 9: -</b>				
-	Supply and prepare timbers for formwork to the suspended floor slab, R.C beams, lintels, and scaffoldings				
	- 300 x 25mm timbers	m	64.8		
	- 225 x 25mm timbers	m	19.2		
	- 100 x 50mm timbers	m	36		
	<b>Total for formwork</b>				
	<b>Bill no. 10: - wall and floor finishes</b>				
-	Plaster both external and internal walls	M2	181.44		
-	Supply and fix concrete vents to all stances	M2	3.6		
-	Introduce floor screed to the floors well finished smooth using cement slurry.	M2	17.47		

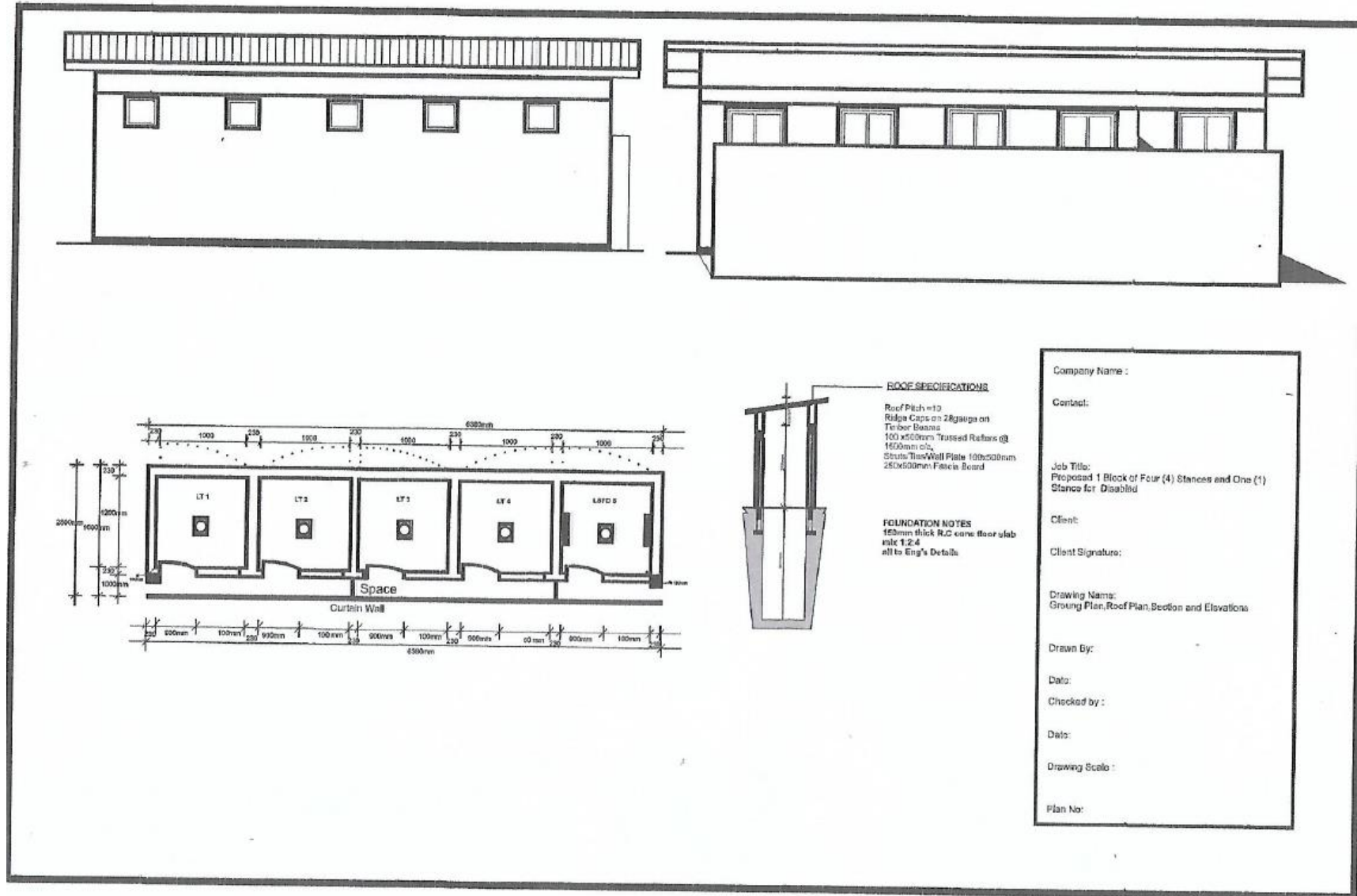
-	Plaster the aprons and the ramps finished semi-rough	M2	24.96		
	<b>Total for walls and floor finishes</b>				
	<b>Bill no. 11 roof construction</b>				
-	Construct the roof structure using well sawn timbers with moisture content not exceeding 16%.				
	<b>Timbers</b>				
	- 75 x 50mm timbers for the purlins	m	22.08		
	- 100 x 50mm timbers for wall plates, trusses, ties, and struts including tie beams	m	60		
	- 225 x 25mm timbers well planned and grooved to fit for fascial boards	m	21.19		
	<b>Covers</b>				
	- Supply and fix IT4 BOX profile G28 sheets on the fixed purlins	M2	14.82		
	- Supply and fix 100mm dia PVC pipe as vent pipe complete fixed with a fly screen.	m	24		
	- Supply and fix metallic holders on both sides of the walls in the disabled toilet	No	2		
	- Supply and fix insect proof mesh wire in all fixed ventilations	M2	0.36		
	<b>Total for roof construction</b>				
	<b>Bill no 12: - doors and windows</b>				
-	Supply and fix metallic doors of dimensions 2100mm by 1000mm	No	6		
	<b>total for doors and windows</b>				
	<b>Bill no. 13: - paint work and decoration</b>				
-	paint the internal walls with 3 coats of internal quality emulsion paint of approved color	M2	113.76		
-	paint the external walls with 3 coats of quality external emulsion paints of approved color	M2	67.68		
-	paint the doors with 3 coats of quality oil premier paints	M2	25.2		
	<b>total for paint and decoration</b>				
	<b>total summary for 1 block 5 stances and 1 stance for the disabled.</b>				



The image contains three architectural drawings of a building facade:

- Top Drawing (Section View):** A vertical section of the building facade. It shows a central vertical element with a trapezoidal top section. Dimensions include a total height of 2700 mm, a top section height of 600 mm, and a base width of 200 mm. A note on the right side reads: "all to Eng's Details".
- Middle Drawing (Plan View):** A horizontal plan view of the facade. It shows a central vertical element with a trapezoidal top section. Dimensions include a total width of 2000 mm, a top section width of 600 mm, and a base width of 200 mm. A note on the right side reads: "all to Eng's Details".
- Bottom Drawing (Detail View):** A detailed view of the roof structure. It shows a cross-section of the roof with a trapezoidal top section. Dimensions include a total height of 2700 mm, a top section height of 600 mm, and a base width of 200 mm. A note on the right side reads: "all to Eng's Details".





**ANNEXE IX: *BOQ FOR LOT #8: SDS/162/2021-E: REHABILITATION OF THE HAND DUG WELL AT KINGS COLLEGE SECONDARY SCHOOL.***

**Table 10: Bills of quantities for the rehabilitation of the hand dug well at king's college secondary school.**

s/n	Description	units	qty	Cost (USD)	Total Cost (USD)
-	Demolish the existing concrete cover and cart away debris arising	Ls	-		
-	Clean the well by removing all dirt and other unwanted materials	Ls	-		
-	Prepare the formwork to cover the pit and receive the concrete	M2	2.25		
-	Prepare and place concrete grade 1:2:4 on the prepared formwork as top slab	M3	0.5		
-	Prepare, cut, bend and tie reinforcement – 12mm bars	kg	79.2		
-	Supply and fix hand pump complete to function	No	1		
-	Provide a soak away pit complete covered with polythene paper G1000	Ls	-		
	<b>Total for rehabilitation</b>				