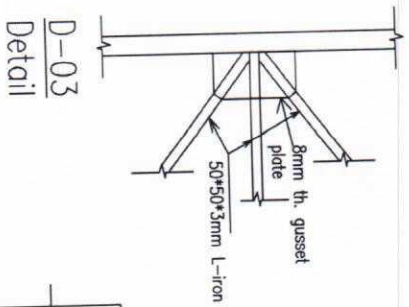
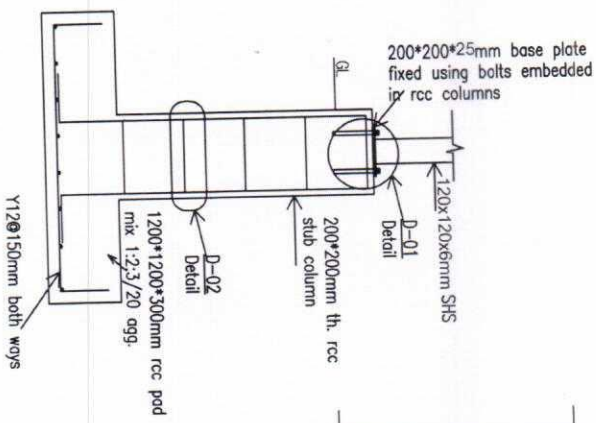


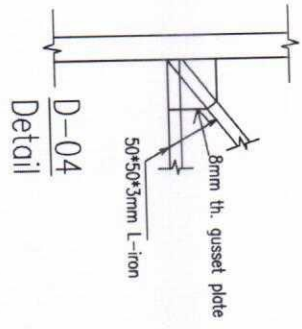
Detail D-01



D-03 Detail



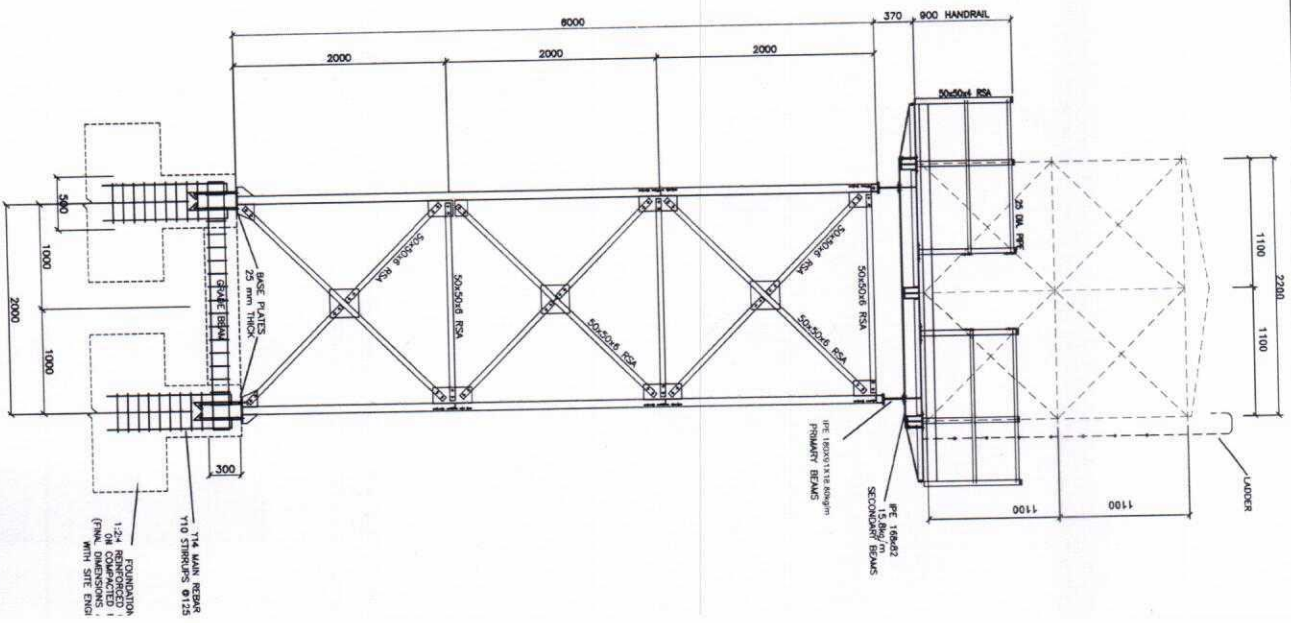
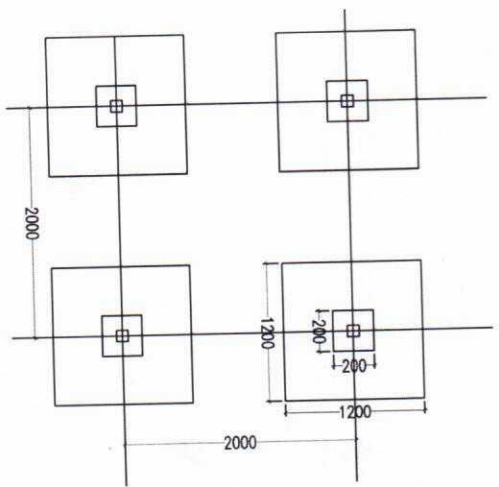
Typical Stub Column



D-04 Detail



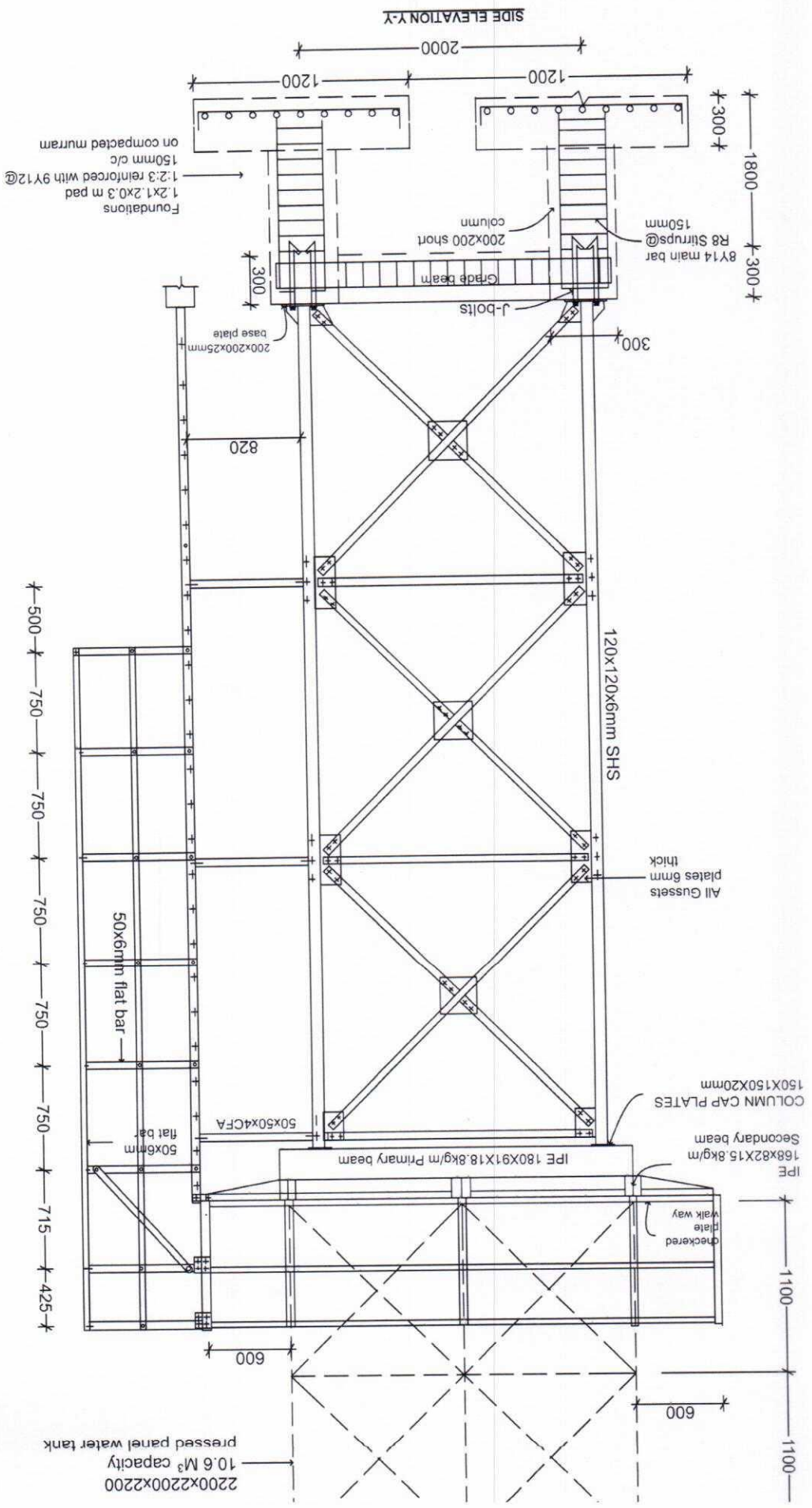
Stub Column detail-02

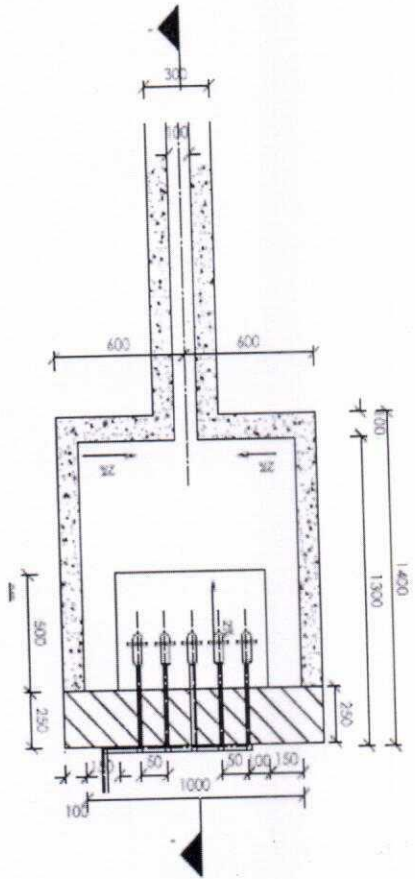
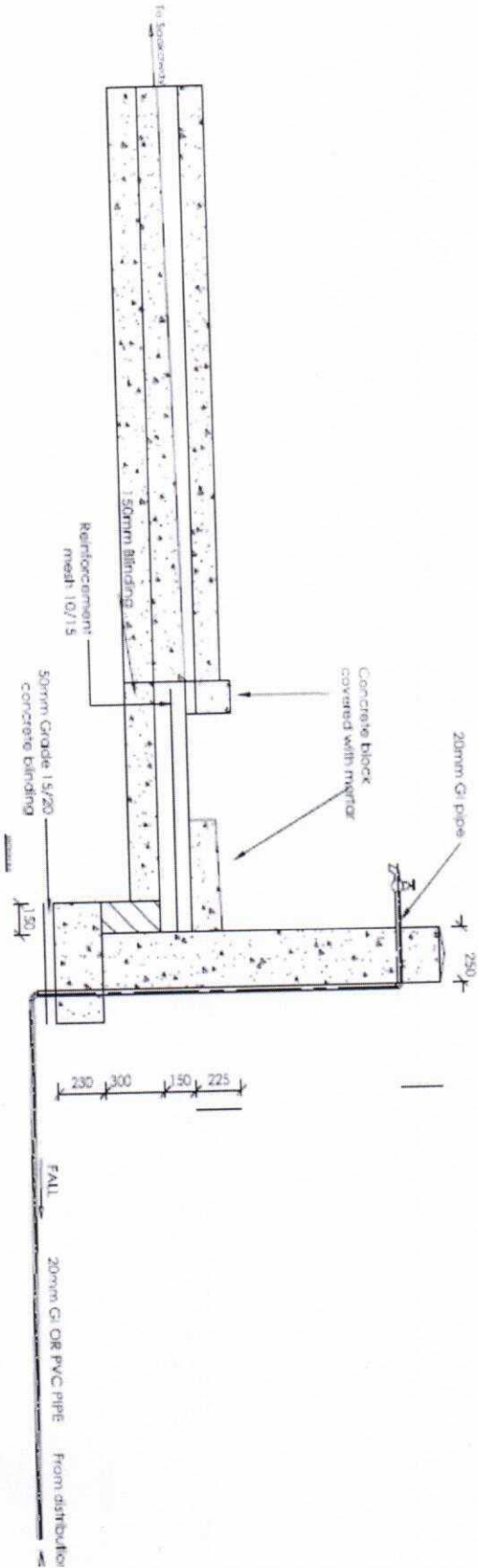


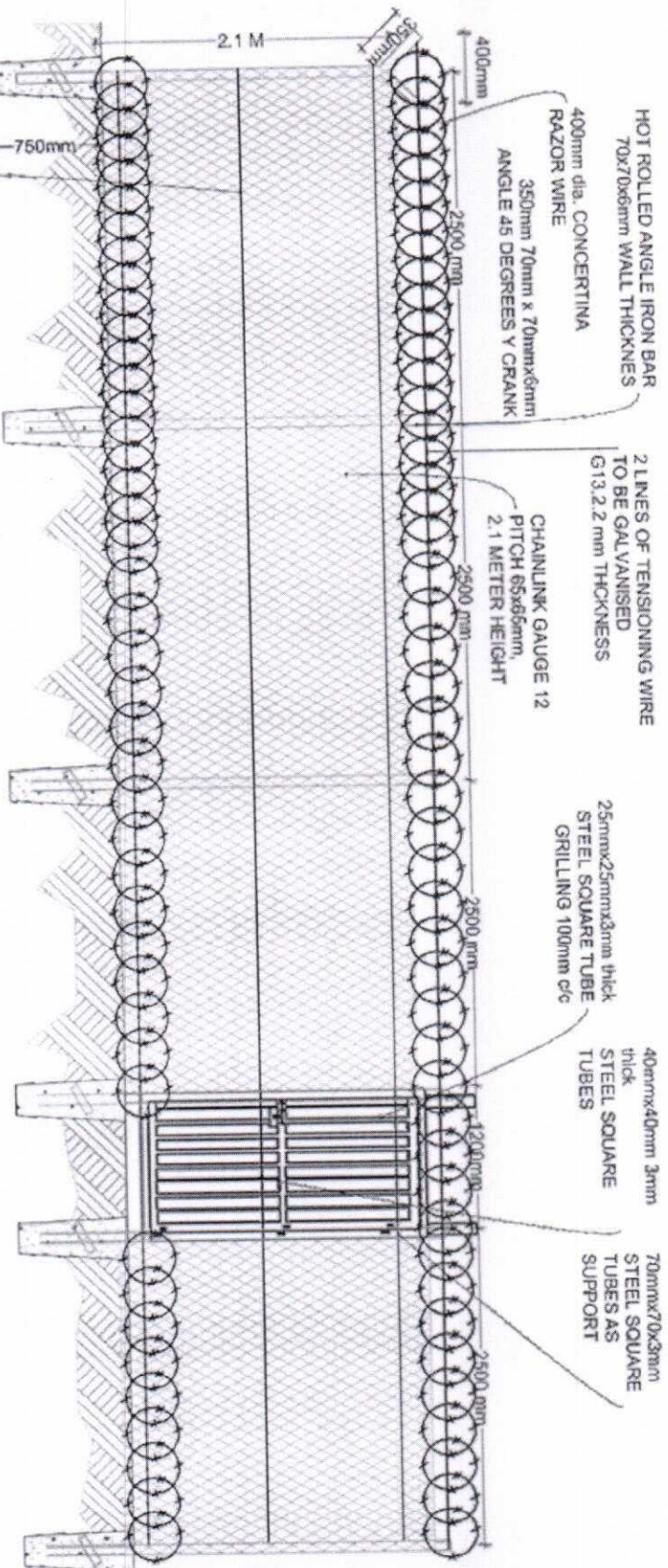
SIDE ELEVATION '7-7'

(CANTILEVER OMMITTED FOR CLARITY)

Islamic Relief - SOUTH SUDAN







HOT ROLLED ANGLE IRON BAR
70x70x6mm WALL THICKNESS

400mm dia. CONCERTINA
RAZOR WIRE

350mm 70mm x 70mm x 6mm
ANGLE 45 DEGREES Y CRANK

2 LINES OF TENSIONING WIRE
TO BE GALVANISED
G13.2.2 mm THICKNESS

CHAINLINK GAUGE 12
PITCH 65x65mm,
2.1 METER HEIGHT

25mmx25mmx3mm thick
STEEL SQUARE TUBE
GRILLING 100mm c/c

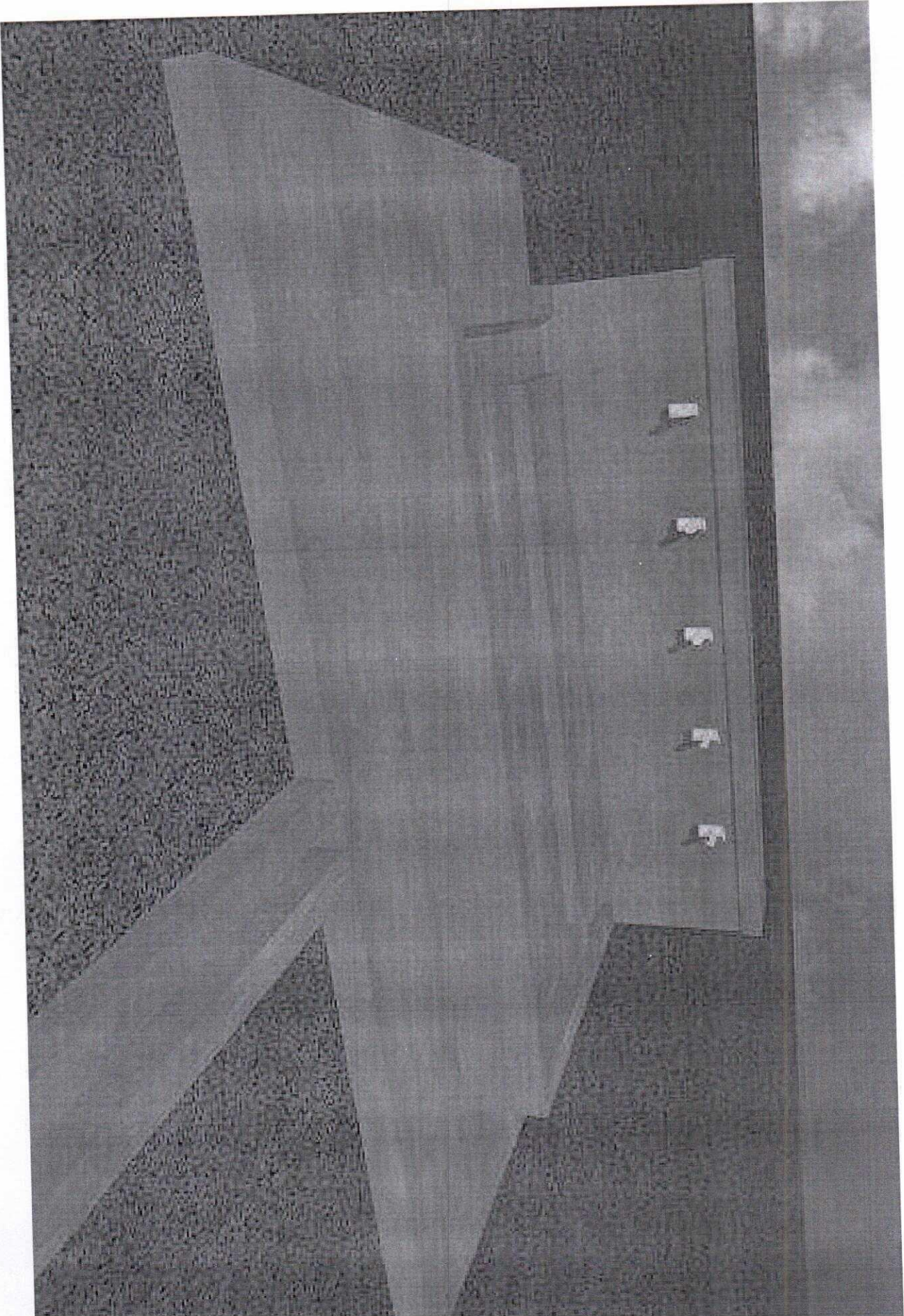
40mmx40mm 3mm
thick
STEEL SQUARE
TUBES

70mmx70x3mm
STEEL SQUARE
TUBES AS
SUPPORT

3 LINES OF TENSIONING WIRE
TO BE GALVANISED
G13.2.2 mm THICKNESS

- FENCE GATE NOTES
- 1.1 PEDESTRAIN ACCESS SIZE: WIDTH 1.2 METERS BT HEIGHT 1.9 METERS
 - 1.2 PEDESTRAIN GATE FRAMES TO FABRICATED OUT HOLLOW STEEL OF SQUARE TUBE 40X40X3mm WALL THICKNESS
 - 1.3 ALL GRILLING TO BE FABRICATED OUT OF THE HOLLOW STEEL OF SQUARE TUBE 25MMX25MMX2.5MM WALL THICKNESS
 - 1.4 DOUBLE ANGLE IRON 70mm X 70mm X 6mm THICK DIAGONAL BRACING SHALL BE FABRICATED AND INSTALLED AT EVERY 20 METERS AND AT FENCE CORNERS

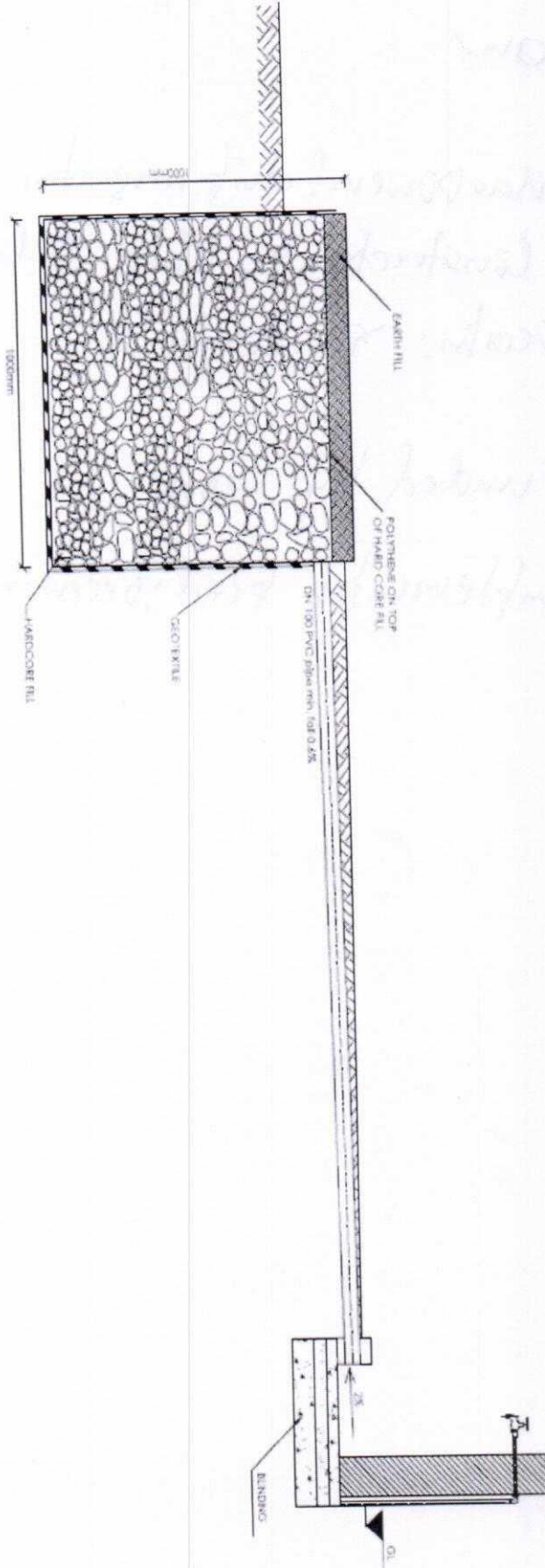
FENCE POSTS
BASE CONCRETE 1.3.6



Islamic Relief - SOUTH SUDAN
Water Collection Point

Water Collection Point

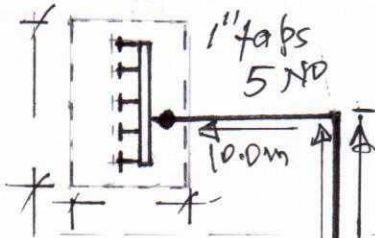
SECTION C-C
SOMAKAVAY



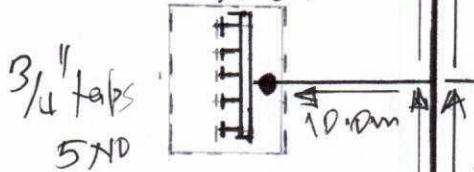


LAY-OUT PLAN: HAI PEACE WATER YARD

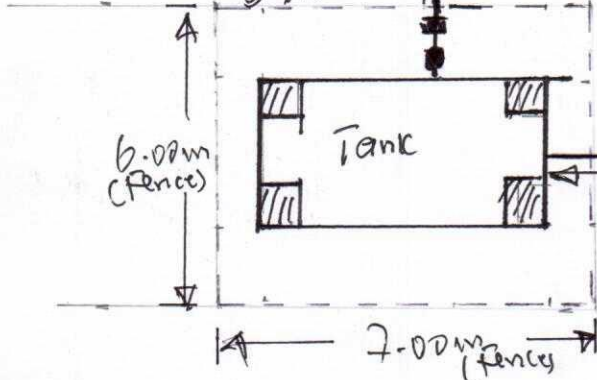
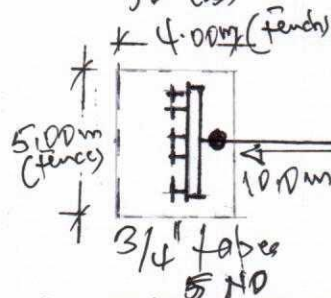
Public stand post N^o (1)



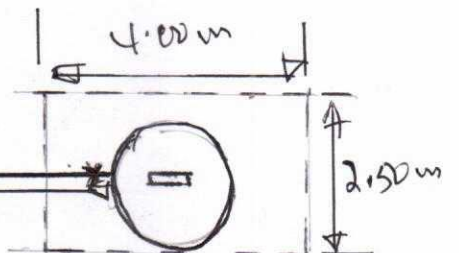
Public stand post N^o (2)



Public stand post N^o (3)



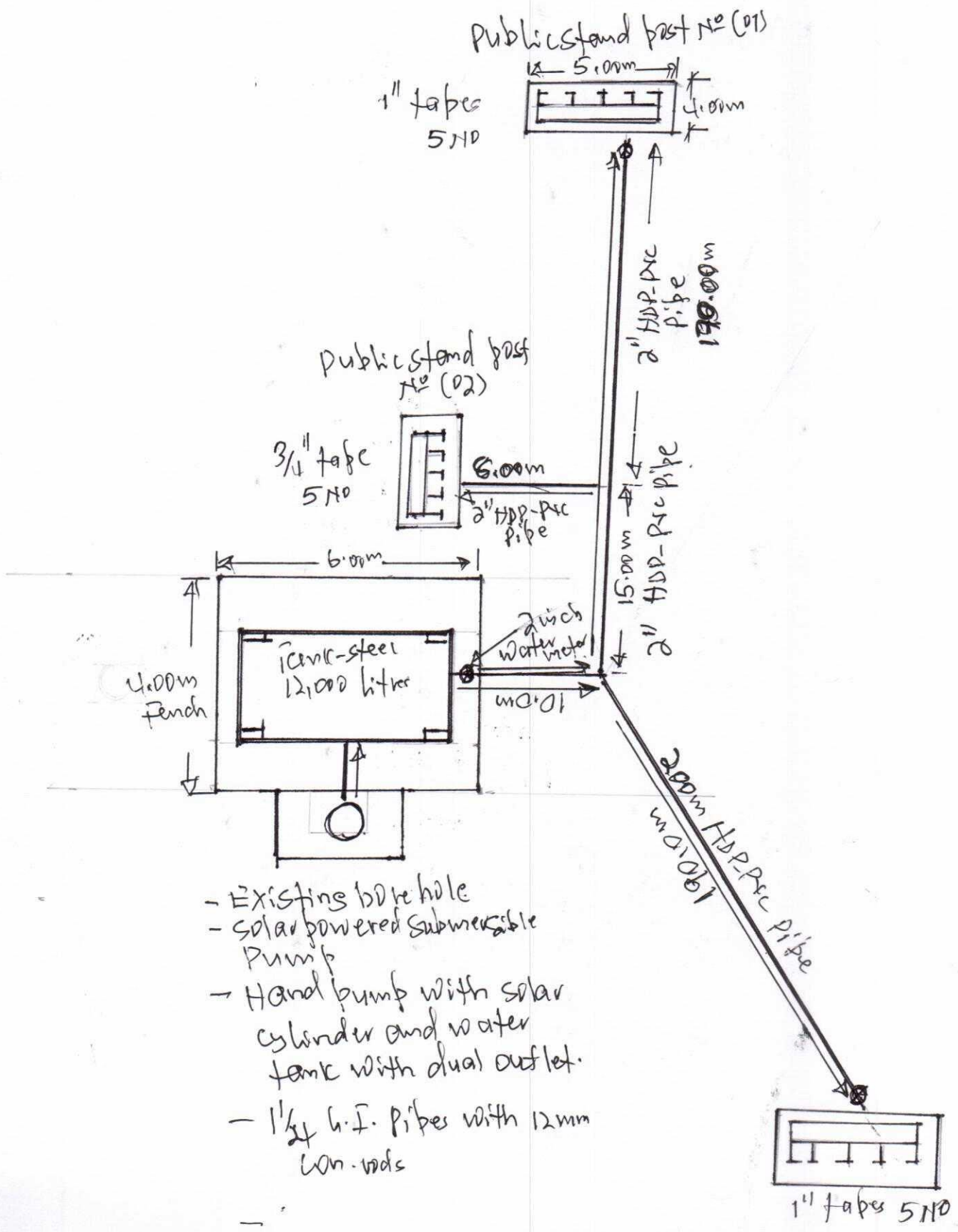
- Steel tank, 12,000 liter
- Water level sensor
- Steel water tower



- Existing bore hole
- Solar powered submersible pump
- Solar hand pump cylinder
- Water tank with dual outlet



LAYOUT PLAN: LOMUKU(1) WATER YARD



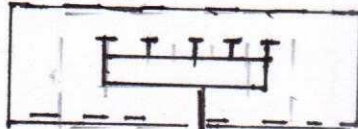
- Existing bore hole
- Solar powered Submersible Pump
- Hand pump with solar cylinder and water tank with dual outlet.
- 1 1/2" h.f. pipes with 12mm con. wds



LAY-OUT PLAN: KONDEKO WATER YARD

Public stand post No (01)

1" brass bib cocks
5 NO



2" HDPE main pipe

200m

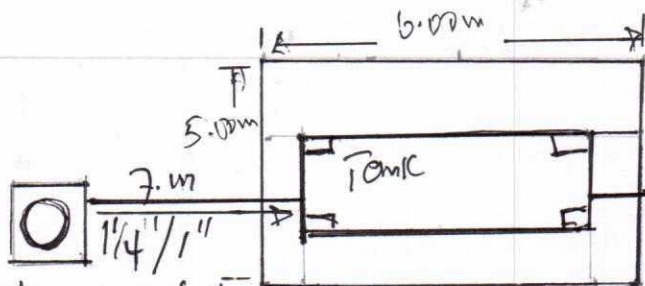
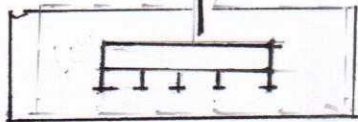
Public stand
post No (02)

3/4" brass bib cocks
5 NO

10m

200m

Public stand
post No (03)



- Existing borehole
- Solar powered submersible pump
- solar hand pump cylinder
- Hand pump, Indian MSK (I), Pedestal, head
- 1 1/4" G.I. pipes
- Indian MSK II water tank (specially designed) with dual out-lets and dual gate valves.
- Steel tank 1200L
- water level sensor
- steel tower
- concrete fittings