



ADVENTIST DEVELOPMENT AND RELIEF AGENCY (ADRA)  
MUNUKI SDA CHURCH COMPOUND, OFF KUWAIT ESTATE,  
JUBA SOUTH SUDAN

DATE: 10<sup>th</sup> JUNE, 2022



## REQUEST FOR QUOTATIONS

### ORGANIZATION BACKGROUND

The Adventist Development and Relief Agency (ADRA) is a global humanitarian organization of the Seventh-day Adventist church which has been in operation for over 60 years. Through an international network, ADRA delivers relief and development assistance to individuals in more 130 countries----- regardless of their ethnicity, political affiliation, or religious association. By partnering with communities, organizations, and governments. ADRA is able to improve the quality of life of millions through 9 impact areas namely: Livelihood and Agriculture; Children; WASH, Community Health; Disaster Response; Economic Growth; Hunger and Nutrition; Social Justice and Gender Equity

For over 37 years, ADRA South Sudan has been making a difference in individual's lives in one of the most difficult contexts in the world in both development and emergency contexts. In South Sudan, we implement programmes in six thematic program areas of Education, Primary Health Care, Emergency Response and Integrated programming, including livelihoods and Agriculture; HIV/AIDS; WASH; economic empowerment and gender.

ADRA South Sudan through its SEAQE II project is calling for quotations from reputable companies for Renovation and construction works as specific below:

**KEY INFORMATION TO BIDDERS: PLEASE FOLLOW THE GUIDANCE OF THE BOQ ATTACHED**

S/NO	PARTICULARS-LOCATIONS	SPECIFICATIONS
1.	Lokwamor & Mogos primary school	✓ Minor rehabilitation of school borehole-see attached BOQ-& design
2.	Karukomuge primary school	✓ Renovation of a block containing 3 classrooms, 2 offices and a store
3.	Paringa Primary school	✓ Construction of 2 rooms semi-permanent teachers' quarter-see attached BOQ
4.	Longeleya primary school	✓ Construction of 2 blocks of 2 stances each VIP latrines- see attached BOQ
5.	Nasigrait primary school	✓ Construction of 2 blocks of 2 stances each VIP latrines- see attached BOQ
6.	Procurement of 150 schools desks-see the attached design specification	
7.	Connection of water using pipes to Chukudum primary school from an existing water source-visit the sites to get correct measurements and come up with correct estimates.	
	<b>NB: Mogos in Kapoeta East County and Chukudum in BUDI county.</b>	

**NOTE: ALL INTERESTED BIDDERS ARE ASKED TO VISIT THE SITES BEFORE QUOTING.**

A successful vendor is expected to be responsible for transportation of all technicians, materials and equipment to Kapoeta North and Kapoeta South counties:

- (i) Companies applying from Kapoeta should submit their bids to ADRA field location offices (Riwoto office)
- (ii) Companies applying from Juba should submit their bids documents to **ADRA main office C/O SDA Church compound, Munuki**



**DATELINE: Strictly on Monday 18<sup>th</sup> June, 2022 at 4:00 PM local time**

**SUBMISSION AND REQUIREMENTS**

Vendors shall enclose all relevant legal registration documents, including latest bank statement, valid Tax clearance certificate, etc in a well-sealed envelope. Ensure to register your hand delivered quotation/bids with procurement

committee before you leave. Only successful and competitive bidder will be notified. ADRA deserve the right to either amend or cancel this quotation with or without notification. The prospective bidder is entirely responsible for any cost related to the preparation and submission of their quotations.

The envelope shall bear the warning “Not to be open before the time and date for bid opening”. ADRA South Sudan will not assume responsibility of any UNSEALED and UNMARKED envelope if misplaced and will be rejected by the committee.

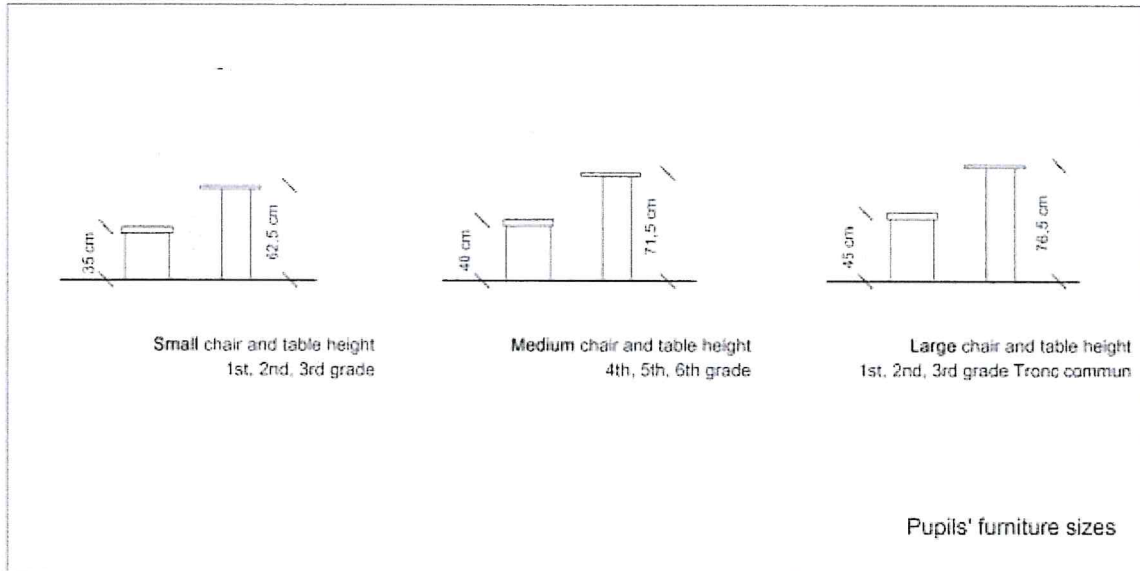
The language for the bids shall be ENGLISH only.

**FOR ANY CLARIFICATION OR INQUIRY, contact, ADRA South Sudan Head Office**

Juba Munuki SDA Church Compound. Or [jobs.adrasouthsudan.org](mailto:jobs.adrasouthsudan.org)



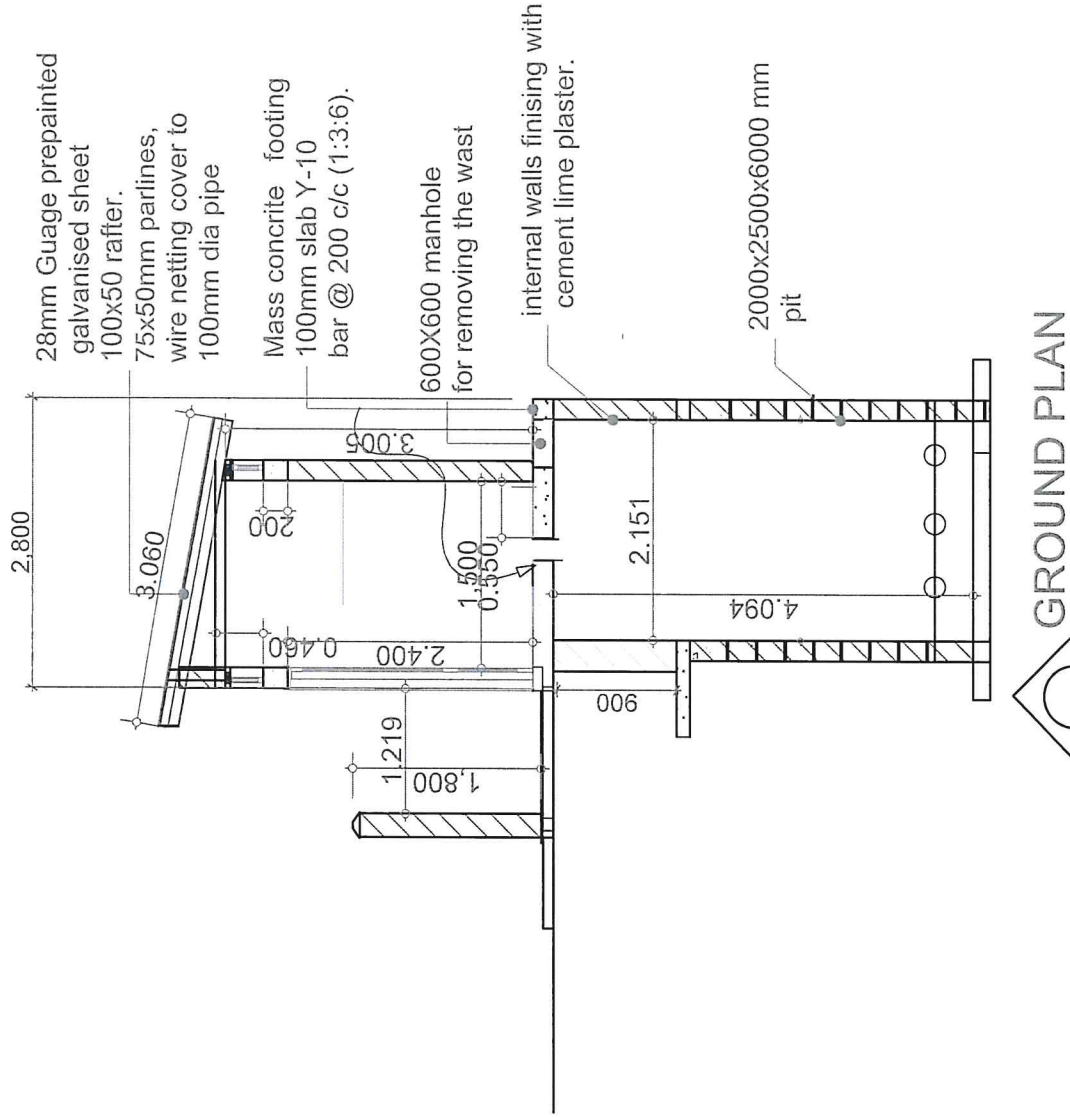
## DESK DESIGN BY UNICEF (RWANDA CHILD FRIENDLY SPACE STANDARDS)



### Notes:

- 1) Use 1" by 9" smooth hard wood timber for the sitting platform of the desks
- 2) Use 30mm by 30mm by 3mm steel RHS for the framing of the desks
- 3) The platforms should be fastened to the frames by carriage bolts
- 4) The desks are to be fabricated strictly to the specification above





28mm Gauge pre-painted galvanized sheet  
100x50 rafter.  
75x50mm parlines,  
wire netting cover to  
100mm dia pipe

Mass concrete footing  
100mm slab Y-10  
bar @ 200 c/c (1:3:6).

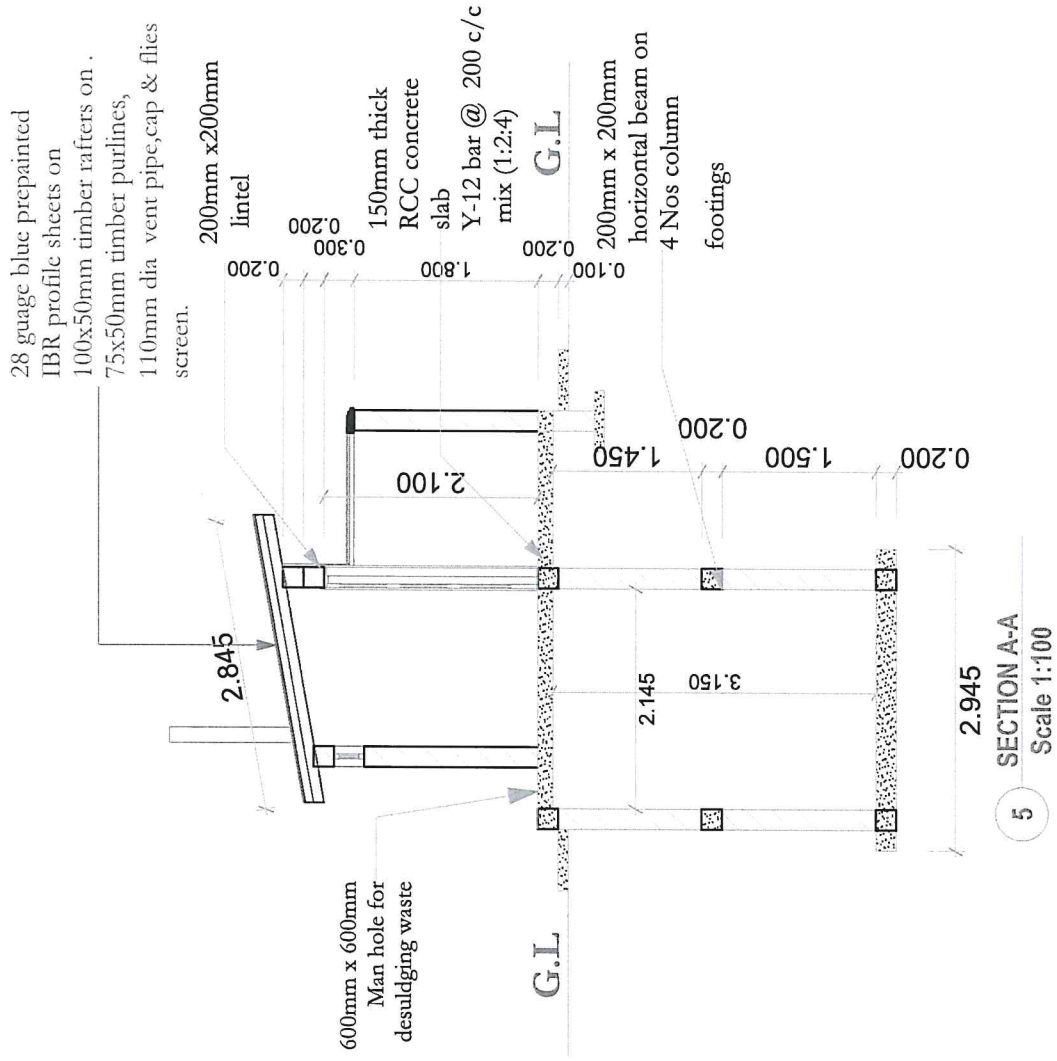
600X600 manhole  
for removing the waste

internal walls finishing with  
cement lime plaster.

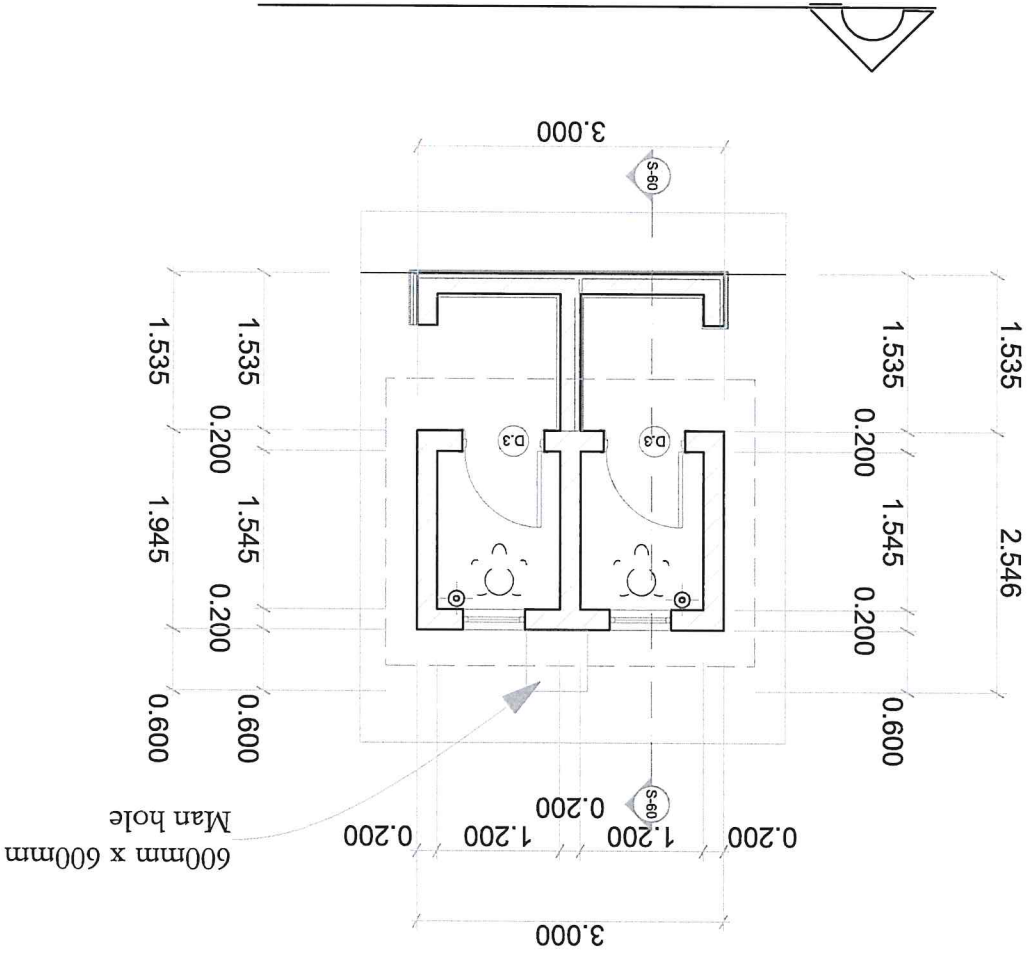
2000x2500x6000 mm  
pit

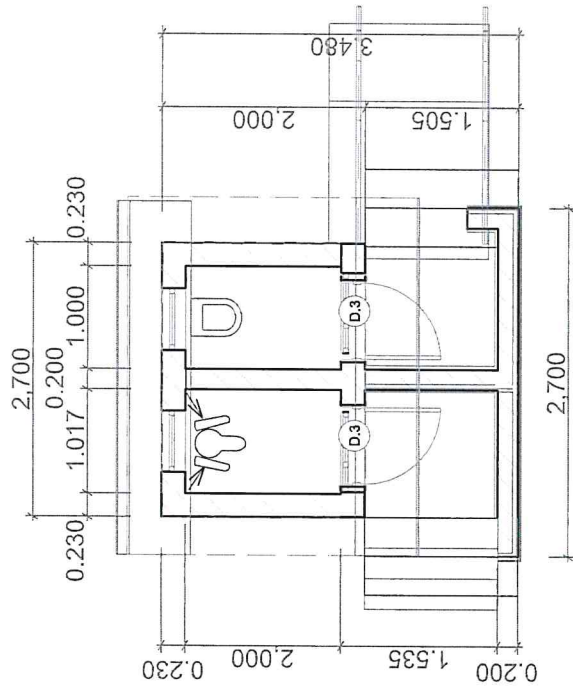
**GROUND PLAN**

scale 1:50



**CONSTRUCTION OF 2-STANCE LATRINE  
AT LOOLIM, KATIKO AND KARUKOMUGE PRIMARY SCHOOLS**





S-62

S-62

S-64

S-64

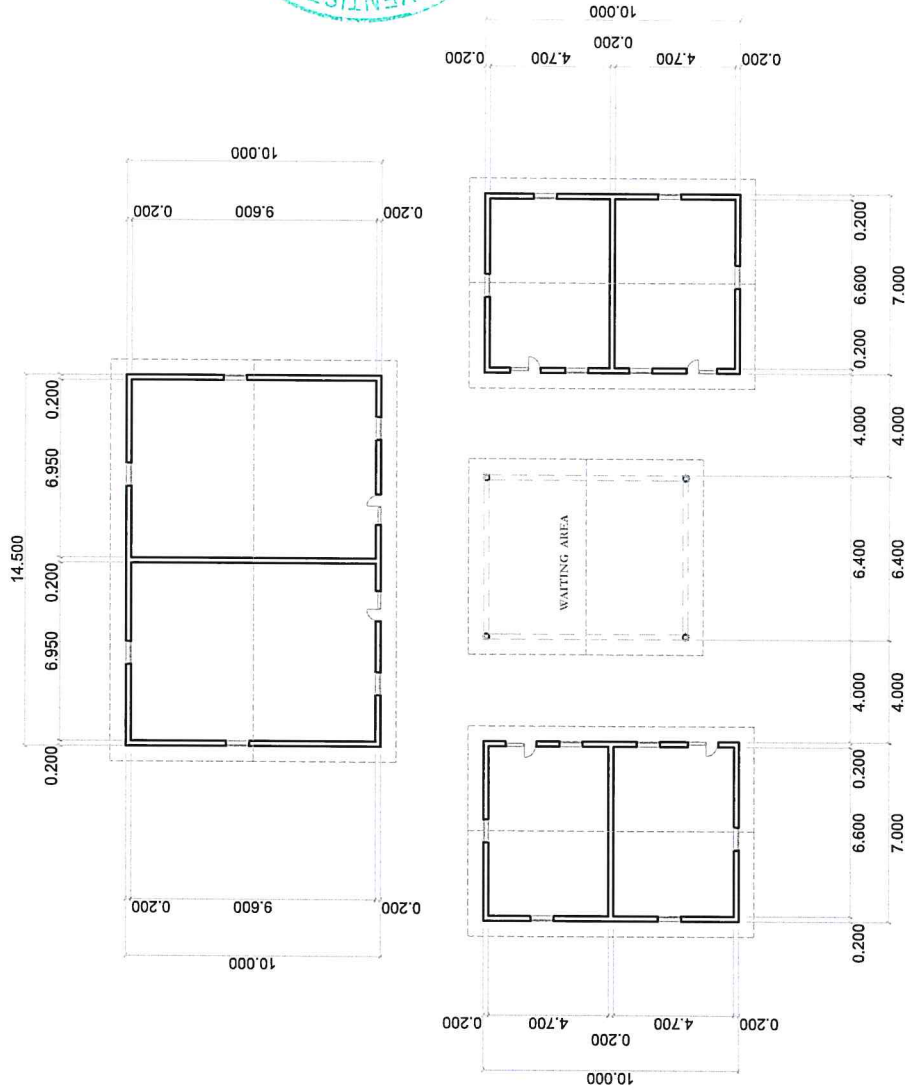
S-55

S-55

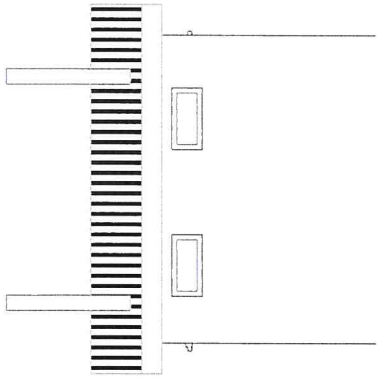
S-63

S-63





GROUND PLAN LAYOUT- CONSTRUCTION OF 2 STALLS VIB LATRINE IN LOOLIM, KATIKO AND KARUKOMUGE PRIMARY SCHOOL  
Scale 1:100

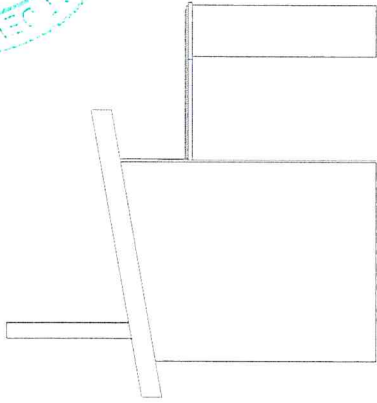


+0.000

+0.000

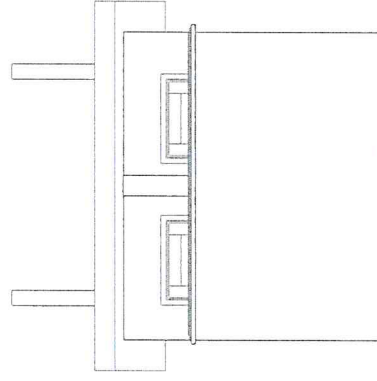
+0.000

2 FRONT ELEVATION  
Scale 1:100



4

4 SIDE(LEFT) ELEVATION  
Scale 1:100

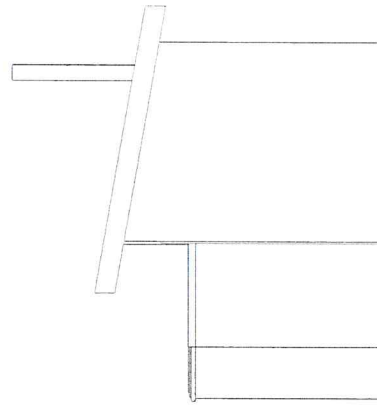


+0.000

+0.000

+0.000

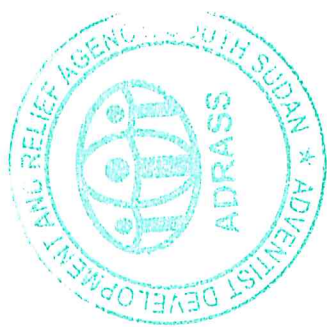
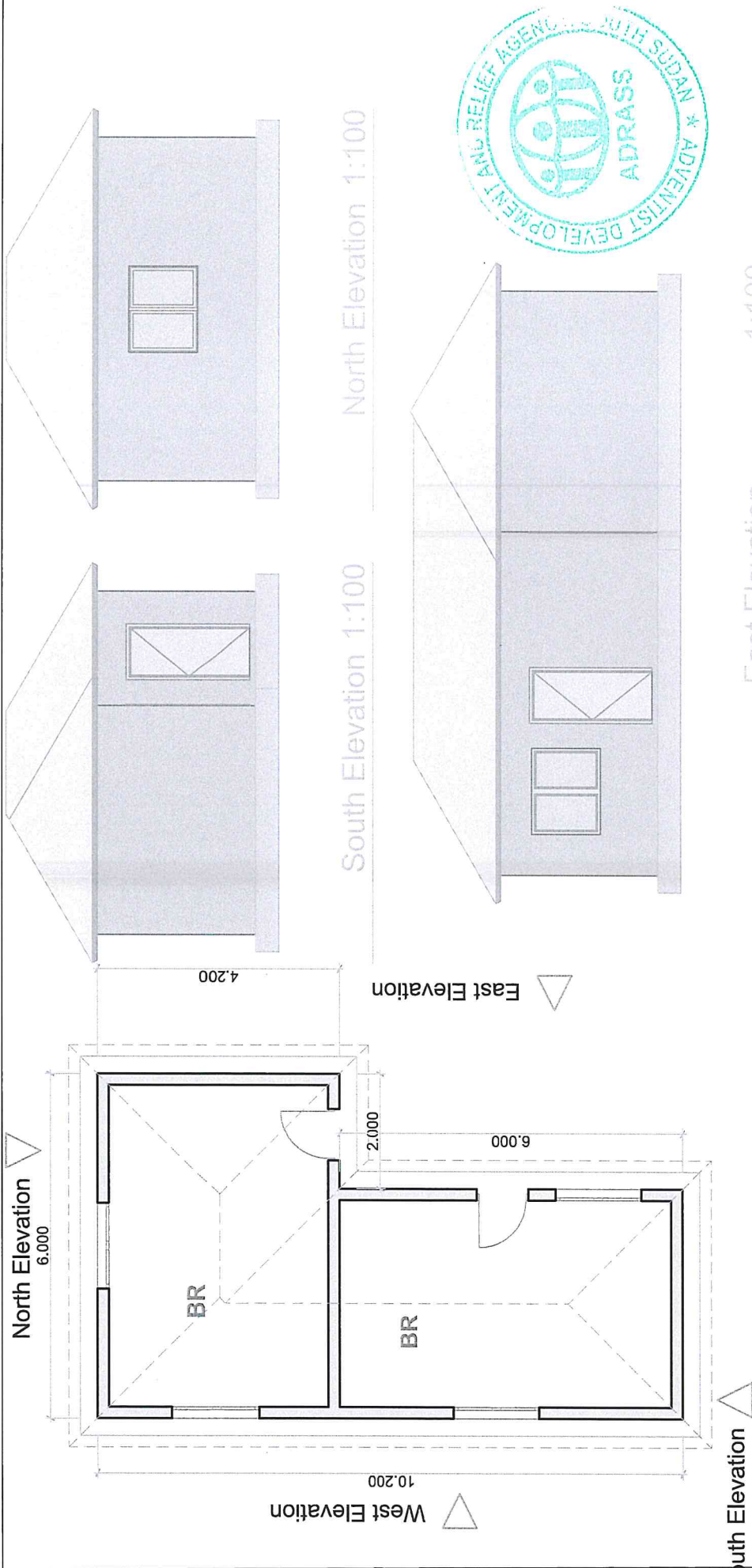
1 FRONT ELEVATION  
Scale 1:100



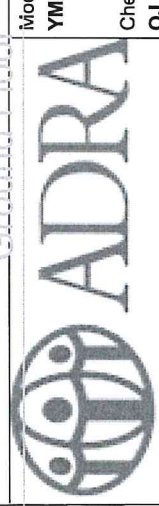
3

3 SIDE(RIGHT) ELEVATION  
Scale 1:100





Ground Floor 1:100



Modified by  
**YMS**  
Checked by  
**OJ**

Date	Drawing Name <b>Ground Floor, South Elevation, North Elevation, East Elevation</b>
Date	Drawing Status <b>Draft</b>
	Drawing Scale <b>1:100</b>
	Layout ID <b>#LayID</b>
	Revision <b>#ReVID</b>

**Proposed staff quarters construction**

#Site Address1  
#Site City  
#Site Country



SOUTH SUDAN

BILL OF QUANTITIES AND MATERIALS



FOR RENOVATION OF A BLOCK OF 3 CLASSROOMS CONTAINING ONE STORE AND TWO OFFICES IN  
KARUKOMUGE PRIMARY SCHOOL-KAPOETA EAST COUNTY

NO	ITEM DESCRIPTION	UNITS	QTY	RATE USD	AMT USD
1	MOBILISATION, DEMOLITION	Note	LS		

*Items of demolition and removal shall includes making good disturbed areas to match existiting areas, and loading and carting away debris.*

1.1	Mobilisation of materials , personnel to the site and building a temporary store.	LS	1		
1.2	Hack and remove all the damaged floor, veranda floor and apron.	SM	100		
1.3	Carefully remove all the broken window frames and refix by welding	NO	100		
	<b>Mobilisation and premeables carried to summary.</b>				-

2	MASONRY WORKS				
---	---------------	--	--	--	--


**LUMPSUM include Supply of materials and repair of afore mentioned various sizes of floors of the highlighted classess by chipping the floor, cleaning the floor, preparation and application of mortar with the right ratios (cement and sand 1:3 semi-dry mix bed) on to the floor (25mm thick cement screeds of 1:2:3 mix wood floated and steel floated as final finish. rare to incude hacking the floor). CURING MUST be done for 15 days, Mortar should be mixed with GLADIATOR to inhibit Termites in the building.**

2.1	Cast plain concrete 1:2:3 on the chipped floor,veranda and apron .	CM	45		
2.3	25mm thick render completely on the scrabbed walls, finished smooth with wooden float.	SM	154		
2.4	25mm thick screed on the floor, apron and verandah finished smooth with steel float.	SM	280		
2.5	<b>Masonry and plaster work total carried to summary.</b>				-

3	DOORS AND WINDOWS				
---	-------------------	--	--	--	--

**STEEL DOORS & WINDOWS:-** The contractor to repair or where repairs are needed as highlighted, the contractor will have to fit the doors and windows with their accessories

3.1	Prepare and apply 2 coats of higloss/oil paint on the windows,doors and metalic poles on the veranda.	PCS	280		
-----	-------------------------------------------------------------------------------------------------------	-----	-----	--	--

	Doors and windows Total carried to summary				-
4	<b>ROOFING</b>				
<i>The contractor will supply all roofing materials and their accessories as per status of the roof to be required. Stongly consider 225 x 25mm wrot fascia boards, including painting work</i>					
4.1	Supply an fix 50X100mm timber, replacing the broken pieces on the truss	LM	280		
4.2	Supply and fix 50X75mm purlins, replacing the broken purlins.	LM	155		
4.3	Supply and fix G28, prepainted ironsheets (green)	SM	150		
4.4	Supply and fix 225mmX20mm berge board.	LM	100		
4.5	<b>Roofing Totals taken to summary</b>				-
<b>REPAIR AND PAINTING OF BLACK BOARDS</b>					
<i>This includes the 4400 x 1200mm high blackboard in cement sand moter mix 1:3 steel floated; painted blackboard paint: (sadolin, duracoat or crown types only) The contractor MUST prepare the surface to be painted well before application of the paint</i>		NO	3		
5	<b>GENERAL PAINTING WORK</b>				
5.1	Prepare and apply one coat of undercoat and two coats of silk paint on the internal faces.	SM	280		
5.2	Dito weatheguard paint on the external wall faces.	SM	280		
5.3	Dito highgloss paint on the windows, doors and round metalic poles	SM	280		
5.4	<b>Painting Totals carried to summary</b>				-
<b>GRAND TOTALS</b>					-
<b>SUMMARY</b>					
S/N	PARTICULARS	TOTAL COST (USD)		 <b>ADRA</b> SOUTH SUDAN <b>SEAQE -2 PROJECT</b> <b>KAPOETA</b>	
1	MOBILISATION, DEMOLITION				
2	Masonry works				
3	Doors and Windows				
4	Roofing				
5	Painting of b/boards and general painting				
<b>GRAND TOTALS</b>			-		



**BILL OF QUANTITIES**

FOR MINOR REHABILITATION OF BOREHOLE AT LOKWAMOR PRIMARY SCHOOL-KAPOETA NORTH COUNTY

S/N	ITEM DESCRIPTION	QUANTITY	UNIT	COST/UNIT USD	TOTAL COST IN USD
1	Mobilization and demobilization of all material, personnel, and equipments	1	LS		
5	Supply and installation of Afridev hand pumps (SWL less than 27m) or India Mark II hand pump including GI riser pipes, rods, centralizer, pump cylinder, etc. where SWL is 40m or deeper, the deeper well version of India mark II hand pump should be installed.	1	PUMP ASSEMBLY		
6	Clean and disinfect the borehole with hypochlorite calcium solution 50mg/liter according to the calculated volume	1	BOREHOLE		
7	bacteriological water test	1	TEST		
8	Chemical and physical water test including for arsenic	1	TEST		
9	Borehole log to be submitted with GPS coordinate details, depth of borehole, SWL, pump cylinder installation depth and hand pump type, number of rising main pipes	1	LOG		
	<b>GRAND TOTAL</b>				-



**BILL OF QUANTITIES FOR PROPOSED CONSTRUCTION OF SEMI-PERMANENT TEACHERS' QUARTER  
 AT PARINGA AND KARUKOMUGE**

S/N	Item/Description	Unit	Quantity	Rate	Amount
1	<b>Site clearance, excavation and anti-termite treatment</b>				
1	Clear site of all grass, shrubs, debris, undergrowth including small trees not exceeding 600mm girth and cart away from site	m <sup>2</sup>	2		
1.1	Excavate to remove vegetable soil starting from existing ground level : 150mm deep average : spread on site for landscaping	Item	2		
1.2	Excavation of 300x300x400mm hole ready to receive teak poles as specified by the design	M <sup>3</sup>	75		
1.4	Anti-termite treatment of the entire building area including holes	M <sup>2</sup>	40		
	<b>Sub-total</b>				-
2	<b>100mm diameter teak poles (3 m long and straight), anchored with at least 6" nails planted with concrete 1:2:4 casting</b>				
2.1	100mm diameter teak poles (3 m long and straight)	NO	150		
2.2	4x3" hardwood	NO	70		
2.3	6" Nails	Kg	30		
2.4	Plain concrete 1:3:6 (cement: Sand: Aggregate)	M <sup>3</sup>	15		
	<b>Sub-total</b>				0.0
3	<b>Walling and Flooring-300x400 mm timber wall (hard wood timber), nailed on teak poles. The gaps between the timber strip on all the joints, nailed firmly, including cladding with recommended mud and rendered with smooth concrete cast</b>				
3.1	Bamboo wall, aligned and nailed with 3" nails on the teak poles	Bundles	100		
3.2	General Cladding of the wall with mud 30mm thick	M <sup>2</sup>	100		



3.3	1200x2400 mm mosquito wire mesh nailed to receive mudding material	NO	25		
3.4	Supply and Apply plastering and rendering (1:3:4) or application concentration	M <sup>2</sup>	25		
3.5	40 cm thick murram compacted for floor slab	trip	15		
3.6	Ditto 3 x 2 timbers	LM	300		
3.7	apply 40 mm floor screed	M <sup>2</sup>	35		
3.8	General painting work both external and internal parts	M <sup>2</sup>	40		
3.9	Nails	Kg	50		
	<b>Sub-total</b>				
<b>4</b>	<b>Roofing materials</b>				
4.1	timber 5x2-4m long	pc	50		
4.2	timber 4x2-4m long	pc	30		
4.3	timber 3x2-4m long	pc	30		
4.4	timber 2x2-4m long	pc	25		
4.5	Roofing nails	Kg	40		
4.7	Roof covering with iron sheets G28 pre-painted	M <sup>2</sup>	200		
4.8	Matched Ridge capping	LM	30		
	<b>Sub-total</b>				-
<b>5</b>	<b>Door and window: Purpose made Iron sheet (G28) door: Z sections framing and clad faced/fabricated both sides with 75x50 mm timber, complete with hinges, frame and fixing lugs built into wall poles including and supply of locks with 3 keys</b>				
5.1	G28 Iron sheet door frame; size 1000x2000 mm high overall, door shutter size 850x2000 mm high	NO	10		
	Door	NO	4		
	Window	Pc	8		
5.2	100 mm Tri-circle Paddlocks with keys	NO	4		
	<b>Sub-total</b>				-
	<b>TOTAL COST:</b>				-

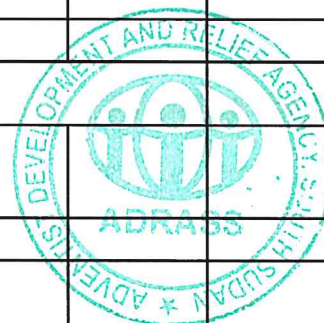
**BILL OF QUANTITIES FOR PROPOSED CONSTRUCTION OF 4 VIP LATRINES OF 2 STANCES EACH IN LONGELEYA AND NASIGRAIT PRIMARY SCHOOLS-2 BLOCKS PER EACH SCHOOL**

Item	Description	Unit	Qty for 4 latrines	Rate USS	Amount USS
<b>1</b>	<b>EXCAVATION &amp; EARTH WORK</b>				
1.1	Clear off the site to remove topsoil to an average depth of 20 cm	M <sup>3</sup>	40		
1.2	Excavation for pits not exceeding 1.5m deep from the stripped level in any material except rock : include removal of excavated material and depositing where directed: approximately 100m away	M <sup>3</sup>	40		
1.3	Ditto item 1.2 but below 1.5m but not exceeding 3.5m	M <sup>3</sup>	24		
1.4	Ditto, but for strip foundation	M <sup>3</sup>	4		
1.5	Back fill under hard core & around masonry with selected granular borrowed material from outside & well ram in layers not exceeding 20cm thick.	M <sup>3</sup>	12		
1.6	Trees will require protection	Note			
1.7	<b><u>Planking and strutting (in loose soils)</u></b>				
a	Allow for Planking and strutting to sides of excavated pits: including removal of fallen materials	Item	4		
	<b><u>Water disposal (in water logged soils)</u></b>				
1.8	Allow for keeping safe all excavations from all types of water including rain by pumping or through any method	Item	4		
	<b>Excavation and Earth works</b>				
					-
<b>2</b>	<b><u>CONCRETE WORKS</u></b>				
2.1	Rate shall include for form work depositing, handling, hoisting into position, vibrating, curing etc. and making good after removal of formwork	Note			

	<b><u>In Situ Concrete</u></b>				
2.2	Supplying and placing of <b>Grade 20 concrete</b> as specified on 150mm thick pit floor beds	m <sup>3</sup>	4		
2.3	Ditto: in strip footings	m <sup>3</sup>	9		
2.4	Ditto: external floor beds: 100mm thick	m <sup>2</sup>	24		
2.5	Supplying and placing of <b>Grade 25 concrete</b> as specified in ground beams 250x200mm.	m <sup>3</sup>	9		
2.6	Ditto: suspended slabs: 150mm thick	m <sup>3</sup>	4		
	<b><u>Formwork</u></b>				
2.7	Formwork as specified to vertical sides of floor beds	m <sup>2</sup>	18		
2.8	Ditto: edges of ground beams	m <sup>2</sup>	26		
2.9	Ditto: soffites of suspended slabs	m <sup>2</sup>	24		
2.1	Ditto: edges of floor beds	m <sup>2</sup>	9		
2.11	Boxing Formwork to form opening size 450 x 600mm for manholes	No	9		
2.12	Ditto: opening in slab size 200 x 300mm	No	9		
	<b>CONCRETE WORKS</b>				-
3	<b><u>REINFORCEMENT: (All provisional)</u></b>				
3.1	Rate to include for supplying, cleaning, cutting, bending, fabricating, placing and the provision of all necessary temporary fixings and supports etc. including binding wires, bends, hooks, tying wires, chairs, distance blocks, steel separators/spacers (designed laps and m.s. chairs if any included in quantities)	Note			
3.2	<b>Tor steel reinforcement (to BS 4449 and characteristic strength <math>f_y = 460\text{N/mm}^2</math>) and Mild steel reinforcement ( to BS 4449 and characteristic strength <math>f_y = 250\text{N/mm}^2</math>)</b>	Note			
3.3	T10 high yield reinforcement bars to ground beams	kg	24		
3.4	R6 mild steel bar as links @ 150mm	kg	15		
3.5	Ditto: to suspended slab @ 200mm centres both ways	kg	135		



3.6	Lintel size 200 x 200 mm in cross section :including 4No. T10 bars and R 6 links at 150mm centres, complete with all formwork as approved by ADRA	m	28		
<b>REINFORCEMENTS</b>					-
4	<b><u>MASONRY WORK</u></b>				
4.1	Rate shall include for lifting, handling, weighting all rough and fair cutting, plumbing angles, normal straight cutting, forming rebated reveals and raking out joints for plastering.	Note			
<b><u>Up to DPC level-Substructure</u></b>					
4.2	200mm Thick solid concrete block walls: bedded and jointed in cement and sand (1:4 ) mortar to pit walls	m <sup>2</sup>	120		
4.3	Ditto: 200mm thick blockwork to plinth walls	m <sup>2</sup>	15		
<b><u>Concrete block work</u></b>					
4.4	<b>100mm thick walls</b> in standard precast <b>hollow cement blocks</b> in cement sand (1:5) mortar: reinforced with hoop iron wall ties at every alternate course	m <sup>2</sup>	25		
4.5	Ditto: <b>200mm thick walls</b>	m <sup>2</sup>	125		
<b>Masonry works</b>					-
5	<b><u>THERMAL AND MOISTURE PROTECTION</u></b>				
<b><u>Damp proof course</u></b>					
5.1	Horizontal <b>damp proof course:</b> bituminous: laid horizontally on screeded 20 mm thick (1:3) screeded	m <sup>2</sup>	12		
<b>Thermal and Moisture Protection</b>					
6	<b><u>STRUCTURAL METALWORK</u></b>				
<b><u>Definitions</u></b>					

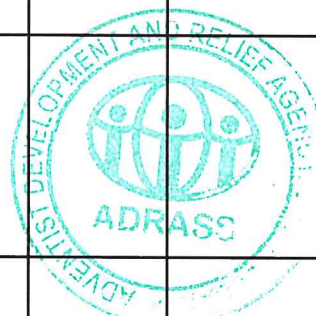


6.1	“Welding” is deemed to be in accordance with the specification and for the material to which it is to be used. Gusset plates, shoe plates, ends, caps, cleats, brackets, stiffeners, bolts, etc., have been included to the rate of the associated steel work in which they	Note			
	b.1] All shop fabrication work, marking, delivery, unloading, hoisting, erecting and fixing as per detail drawings.	Note			
	b.2] All welds are 6mm thick fillet weld & allowance for rolling margin.	Note			
	b.3] The weight of weld metal in welded constructions.	Note			
	b.4] Members of any length.	Note			
	b.5] Cutting to size and shape and joints in the running length.	Note			
	b.6] Grinding to a smooth finish, unless otherwise required.	Note			
	b.7] Machine drilled bolt, holes, bolts, nuts and washers, cleats, shoe and gusset plates and all other connections.	Note			
	b.8] After fabrication wire brushed to clean the all steel surfaces and spray painted with two coats of quick drying metal primer zinc phosphate & two coats of matt anti corrosive with necessary	Note			
	<u>Fabricating and erecting framed structures</u>				
	<u>Roof structures</u>				
6.2	Steel angle bar section 40x40x5mm as roof rafters 2300mm in length spanning 1500mm wide properly anchored in concrete beam to walls.	No	18		
	<u>Purlins</u>				

6.3	Supplying & fixing of <b>Steel Hollow sections as purlins</b> , 60 x 40 x 4mm: welded to roof trusses ( <i>measured separately</i> ) at 900mm centres: complete with all the required paint works and all necessary supports	M	28		
6.4	Allow sum for any other item required for the construction and completion of the roof framework, which are not covered under the above items ( <i>The items will have to be approved and paid</i>	Item	4		
<b>Structural Metal works</b>					-
7	<b><u>ROOF COVERINGS</u></b>				
	Rate shall include;				
7.1	All, rivets, nails, clips, strips and delivering and fixing in position.	Note			
7.2	All timber shall apply Priming backs & applying two coats of an approved wood preservative before fixing.	Note			
7.3	All timber shall have final finish; Two coat of wood preservative, two coats of primer, two coats of wood sheen spray paint	Note			
	<b><u>Roof Covering</u></b>				
7.4	Supplying & fixing of gauge 28 pre-painted IT4 profiled <b>roofing sheets</b> ( 0.5mm ) of approved colour: fixed with screws to 60 x 40 x 4mm steel purlins ( <i>measured separately</i> ) and rubber capping to tops of bolts	m <sup>2</sup>	120		
	<b><u>Valance / Barge Board</u></b>				
7.5	25x225mm high timber <b>valance board / barge board</b> bolted to mild steel plate at the ends of rafters with 2 No. 6mm diameter bolts : plates welded to edges of rafters: all complete with approved wood preservative as specified.	M <sup>3</sup>	65		
	<b><u>Roof Covering</u></b>				
8	<b><u>METAL WORK- DOORS AND WINDOWS</u></b>				
	<b><u>Painting / Final Finish</u></b>				

8.1	Unless otherwise stated all surface of doors & windows, casements and plywood door sashes shall be finished with one coat of anti rust primer, two coats of high gloss spray paint.	Note			
	<b><u>Doors</u></b>				
8.2	Metal <b>door set, type D</b> , of size 800x2200mm high overall, comprising of 60x40x4mm RHS steel sections as door frame fully welded and mitred at corners, 40x25x3mm RHS steel section shutter frames: infilled with 1.8mm thick mild steel plate on two faces: include for all necessary door locks, iron mongery, final finish & fixing to concrete or blockwork as per Engineers approval.	Nos	6		
8.3	<b>Window, type W</b> , steel, size 600x600mm high overall comprising of 60x40x4mm RHS frame fully welded and mitred at corners, Zed & Tee section side hung glass infilled window sashes, :include for all necessary fasteners, burglary proof and iron mongery, final finish & fixing to	Nos	9		
	<b>Doors and Windows</b>				-
9	<b><u>FINISHES</u></b>				
	<b><u>Wall Finishes</u></b>				
9.1	20mm thick cement and sand (1:5) render on concrete or blockwork: wood floated hard and smooth: to <b>external</b>	M <sup>2</sup>	135		
9.2	12mm thick cement lime sand (1:1:5) plaster <b>finished smooth</b> with lime putty or concrete or blockwork: to surfaces of	M <sup>2</sup>	69		
	<b><u>Floor finishes</u></b>				
9.3	40mm Thick coloured cement and sand (1:3) screed : steel trowelled hard and smooth to <b>internal floors</b>	M <sup>2</sup>	39		
	<b><u>Plinth Plaster</u></b>				

9.4	20mm Thick cement and sand (1:3) render : wood floated hard and smooth to <b>plinths</b> : externally	M <sup>2</sup>	15		
9.5	20mm Thick cement and sand (1:3) render : steel floated hard and smooth to <b>pit walls</b> : internally	M <sup>2</sup>	84		
	<b><u>PAINTING</u></b>				
9.6	Rate shall include for preparation of surface cleaning down, smoothing, knotting, stepping etc. protection of floors and fitting, removing & replacing door and window, furniture, and	Note			
9.7	Paint shall be from approved color with approved manufacturer.	Note			
	<b><u>Wall Painting</u></b>				
9.8	Prepare and apply one coat of primer and two coats of exterior quality weather shield paint of approved colour and quality to <b>rendered external surfaces</b> of walls and concrete.	M <sup>2</sup>	135		
9.9	Ditto: <b>rendered plinth</b> surfaces	M <sup>2</sup>	12		
9.1	Prepare and apply one coat of primer and two coats of interior quality emulsion paint of approved colour and quality to <b>plastered internal faces</b> of walls and concrete	M <sup>2</sup>	69		
	<b>Finishes</b>				-
10	<b>MISCELLANEOUS WORKS</b>				
	<b>RAMP ENTRANCE AND HANDRAIL</b>				
10.1	Place 25 cm hardcore on compacted soil at the ramp entrance of the latrine providing a maximum of 6% slope.	M <sup>2</sup>	6		
	Place 5 cm thick lean concrete class C-5, 150 kg cement/m <sup>3</sup> of concrete	M <sup>2</sup>	6		
10.2	Place class C-20 concrete 10cm thick ramp floor with minimum cement content of 320 kg/m <sup>3</sup> of cement	M <sup>2</sup>	6		





10.3	Fix 1" galvanized steel pipe or equivalent material handrail spaced at 30 cm c/c, price shall include welding and other work required to fix the handrail internally for the room wall and for the ramp externally	M	28		
10.4	Produce and fix precast concrete manhole cover	Pcs	6		
	VISILITY	Item	6		
	<b>Ramps, rail and visibility</b>				-
	TOTAL AMOUNT				-

**SUMMARY**

S/N	DESCRIPTION/PARTICULARS	AMOUNT IN USD
1	EXCAVATION & EARTH WORK	
2	CONCRETE WORKS	
3	REINFORCEMENTS	
4	MASONRY WORK	
5	THERMAL AND MOISTURE PROTECTION	
6	STRUCTURAL METALWORK	
7	ROOF COVERINGS	
8	METAL WORK- DOORS AND WINDOWS	
9	FINISHES	
10	MISCELLANEOUS WORKS	
	<b>TOTAL SUM FOR 3 LATRINES</b>	

