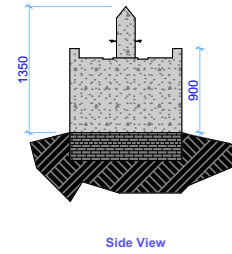
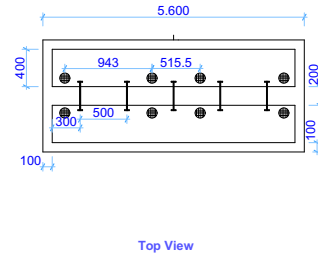
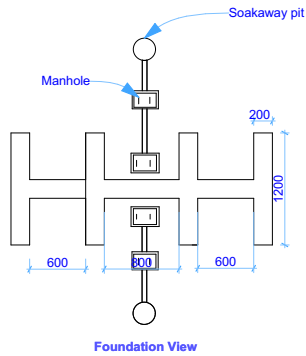
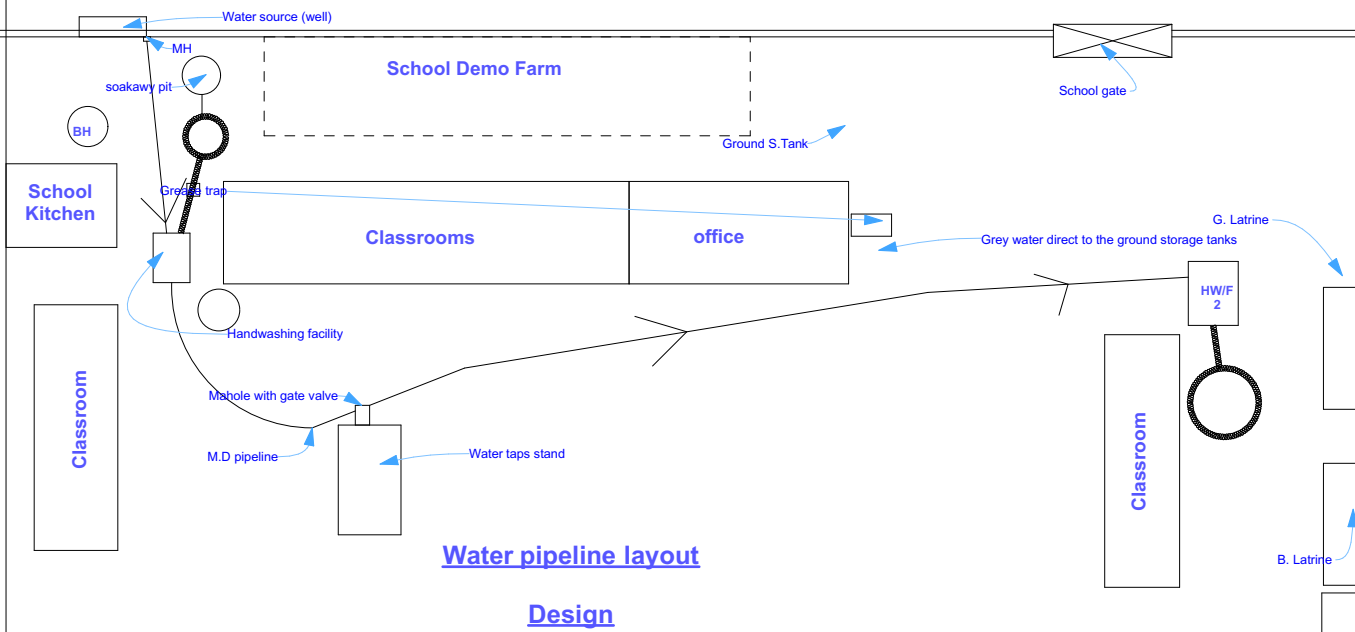


## Handwashing facility Design



- NOTE:**
1. Remove the top soil upto 10cm for all the excavation works.
  2. All ground pipe should be laid at 50cm and well covered using the dug materials.
  3. Use (HDPE flexible) PE 100 pipe OD63 PN10 wall thickness 5.8mm including all the necessary requirements such as joints, fittings, as the main Distribution pipeline.
  3. Use HDPE flexible) PE 100 pipe OD63 PN10 wall thickness 3mm (1.0) which extends the pipe to the Handwashing facility and water Tap Stands.
  4. Use well burnt red bricks for the walls and the foundations including the manholes and tank with 1:3 cement mortar mixed ratio.
  5. Fix an L-sharp metallic bar on the manhole and on the manhole cover.
  6. Use 4" PVC pipe for the grey water and fill the soakaway pit with charcoal and red bricks.

**PROJECT TITLE**  
 Extension of water pipeline,  
 construction of Water taps stands,  
 Handwashing facilities at Kapu  
 Primary School



**german  
 humanitarian  
 assistance**

DEUTSCHE HUMANITÄRE HILFE

Implemented by: Malteser International



**Malteser  
 International**  
 Order of Malta Worldwide Relief