

TERMS OF REFERENCE
FOR PROVISION OF SERVICES FOR THE CONSTRUCTION OF TEMPORARY
LEARNING STRUCTURES (TLS) AT BANGLEI ECD & RENOVATION OF TLS
AT MAJAK PRIMARY.

BACKGROUND

Food for the Hungry is working in a consortium with Nile Hope, and SAADO to deliver the Education Cannot Wait (ECW) project in Nyirol, Duk and Baliet Counties in Upper Nile and Jonglei States. The project aims to increase access to quality and inclusive early childhood and primary education in a safe and conducive learning environment. To achieve this objective, some of the key deliverables include construction and renovation of temporary learning spaces as detailed in the scope of work.

SCOPE OF WORK

FH seeks the services of professional construction companies with traceable references to provide labour for the construction and renovation of temporary learning structures (TLS) in two selected schools in Upper Nile State (one in Baliet County and one in Akoka County). The identified service provider(s) will also be required to transport the related construction materials for these tasks (see relevant annexes at the end of the document) from Malakal town to the construction sites.

LOT ONE – BANGLEI ECD CENTRE IN BALIET COUNTY - CONSTRUCTION OF A NEW TLS (including a latrine)

- a) **Transportation of building materials from Malakal town to Banglei ECD in Baliet County.** FH will procure all the required construction materials (annex 1) and will pre-position them in Malakal town. The identified contractor will transport these construction materials from Malakal town to Banglei ECD
- b) **Labour cost for the construction of the TLS** – The TLS will comprise a single classroom block of 104 square metres floor area sub-divided into 2 classrooms 6.5m x 8 metres and a two stance latrine. (See annex iii for technical drawings) The works will entail but not limited to the following;

The classroom block

- **Floor**
 - Should be raised above ground level to ensure the classrooms do not get flooded in the rainy season. A mixture of cow dung and clay yield good result in terms of hygiene and this will be used for raising floor.
- **Walling**
 - The walls will be made of galvanised iron sheets.

- For ventilation, wire mesh windows across the wall at 1 metre above the ground should be provided. The size of wire mesh windows will be 1.2 metre x 4.8 metres in width.
- The galvanised iron sheet walling should be vertical and nailed to steel columns.
- The 2 doors will be fabricated using galvanised iron sheets and timber frames.
- **Fittings**
 - The classroom will be fitted with 48 fixed benches and a black board
- **Frame structure of TLS**
 - The TLS frame will be of steel columns 100mm x 100mm x 3mm (or 100mm diameter circular pipes) and 3300mm in height anchored to concrete bases at least 20cm deep.
 - Steel roof structure; will be made of 50x100x3mm steel wall plate, 40x80x3mm steel rafters, 40x80x3mm steel tie beams, 40x60x3mm steel struts and ties and 40x60x3mm steel purlin members.
 - The roof will be of galvanized roofing sheets (gauge 28) secured with fasteners and other fixing arrangements including capping to the roof with necessary roofing screws or hooks. Matching ridge caps will be provided.

The Latrine

Will be a low cost 4 stance latrine with 4 separate doors. The construction materials for the latrine are included in annex 1. The contractor will use welded empty metallic drums

LOT TWO – MAJAK PRIMARY SCHOOL IN AKOKA COUNTY - REHABILITATION OF TLS (including latrine)

- a) **Transportation of building materials** from Malakal to Majak primary in Akoka County. FH will procure all the required construction materials (Annex II) and will preposition these in Malakal town. The contractor will be required to transport the materials from Malakal to Majak primary.
- b) **Labour cost for the renovation of TLS** – one classroom block comprising of 4 classrooms and a 4 stance latrine will be renovated. This entails but not limited to the following works;
 - Renovation of the four classroom block**
 - **Walling (see figure 1 below)**
 - The current structure has steel frames and a galvanised iron sheets for roofing. The wall are however made of grass this this renovation entails replacing the grass walls with galvanised iron sheets.
 - For ventilation, wire mesh windows across the wall which is 1 metre above the ground should be provided. The size is 1.2 metre x 4.8 metres in width.
 - The galvanised iron sheet walling should be vertical and nailed to the columns.
 - The 4 doors of the classroom block will be fabricated using galvanised iron sheets and timber frames.



Figure 1. A picture of 1 block that needs renovation. Walling needs to be done with iron sheet and wire mesh windows for ventilation.

Renovation of latrine –

The school has a 4 stance latrine which needs minor repair works including partitioning of the 4 stance into 4 units. (See figure 2).

A hand washing facility made of metallic drum with 2 fixed tapes will be installed.



Figure 2. Latrine that needs partitioning

DOCUMENTS TO BE SUBMITTED WITH THE BID

Bidders are required to submit bids for Lot one and Lot two **separately**. Combined Lot one and Lot two bids will be **disqualified**. A complete bid will include the following key documents/information which will be used for evaluation.

- Company registration documents.
- Transportation cost (Malakal to the construction sites)
- Labour cost
- Schedule of work
- Indicate clear payment terms.
- Evidence of previous similar work successfully completed and at least 3 (three) contactable references.

NB; Incomplete or mixed bids will be disqualified.

Annex I -**Bill of Materials for 01 TLS (02 classrooms, 42 Fixed benches, 01 Black Board) and 01 Block of a 02 Stance Latrine at Banglei ECD Centre.**

S/N	Item/Description	Unit	Quantity	Rate	Amount
1	Cement	Bag	6		
2	Timber 6x2" - 4M Long	Pc	40		
3	Timber 4x2" - 4M Long	Pc	70		
4	Timber 3x2" - 4M Long	Pc	120		
5	Timber 2x2" - 4M Long	Pc	4		
6	Facia board 9x1" - 4 M Long	Pc	15		
7	75mm diameter metallic pole(hollow section 4mm thick - 6M long)	NO	23		
8	G28 ordinary Iron sheet	Pc	120		
9	Bamboo Poles	Bundle	80		
10	Teak Poles for fix benches	Pc	23		
11	Nails 6"	Kg	15		
12	Nails 5"	Kg	20		
13	Nails 4"	Kg	25		
14	Nails 3"	Kg	25		
15	Nails 2.5"	Kg	20		
16	Roofing Nails	Kg	10		
17	Rubber washers/caps	Pkt	2		
18	Ridge caps	Pcs	9		
19	Hoop Iron	Rolls	1		

20	Welded Chicken Mesh 2.4x1.2 M	Pcs	7		
21	Premier paints - Weather Guard(white)	Tins	1		
22	Painting brush - 4"	Pcs	2		
23	Hinges - 4" Aluminium type	Pair	2		
24	Tower bolts - Medium	Pcs	2		
25	Tower bolts - big	Pcs	2		
26	Padlock - Bigger size(100mm) - Tricircle	Pcs	2		
27	Wood preservatives	J'cans	1		
28	Anti - Termite Chemical - 1 Ltr tin	Tins	1		
29	Aggregate + Transport	Trip	0.25		
30	Sand + Transport	Trip	0.25		
31	Hack Saw blades	Pcs	1		
32	Bow Saw Frame + Blades	Pcs	2		
33	Metallic Spade	Pcs	1		
34	Plastic sheet	Pcs	1		
35	Ply wood (6mm for chalk board)	No	2		
36	Teachers' Chair and Table	NO	4		
37	75mm PVC Pipes + Vent Covers - 6M Long	Pcs	1		
38	Plastic Slab (80x120mm)	NO	2		
39	Rice Bags	Pcs	100		
40	250 Ltr Plastic tank for hand washing(with tap) + Welded stand	Pcs	1		
41	Allow for Visibility cost	Item	1		

42	Wheel barrow	Pcs	1		
	Total materials Cost				

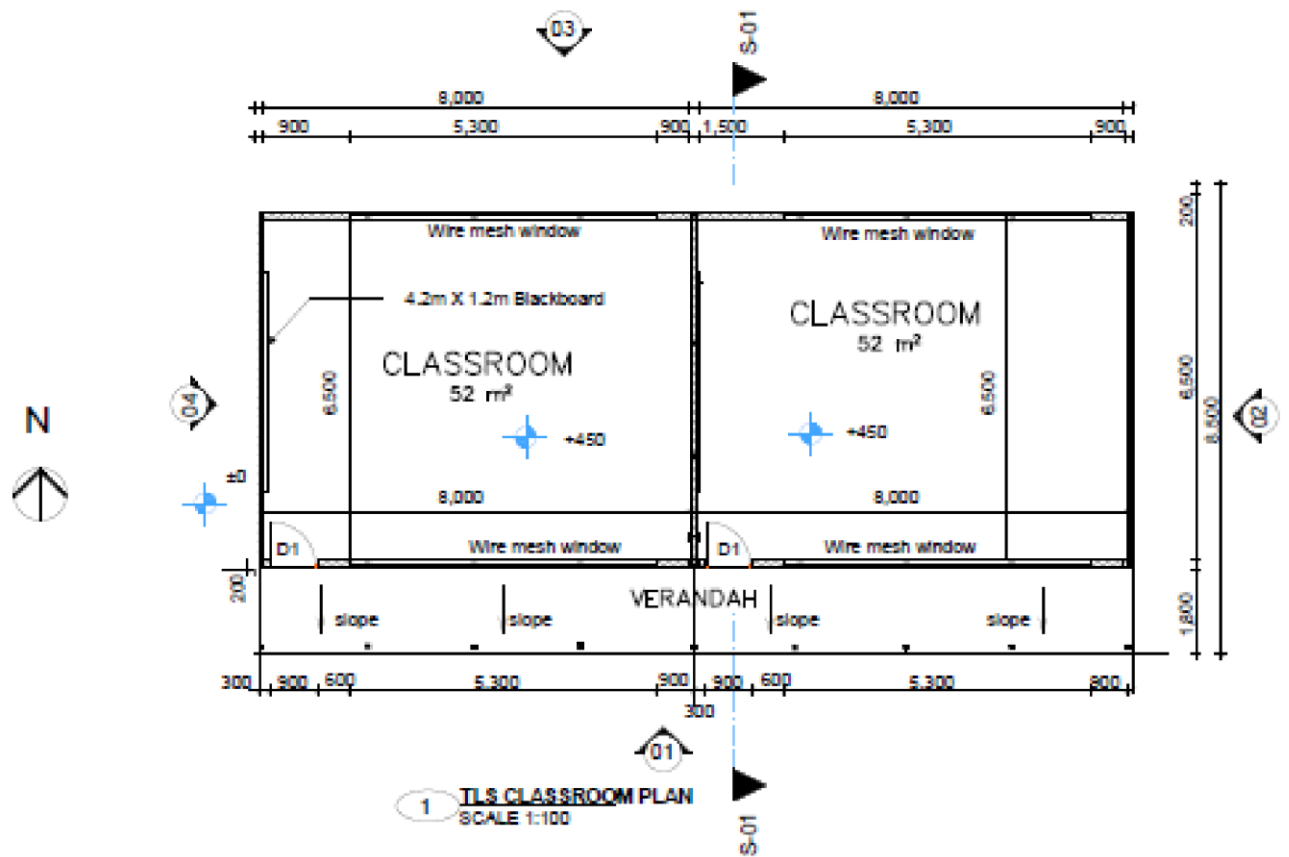
Annex II - Bill of materials for renovation of TLS and WASH (toilet) at Majak primary school in Akoka County

Bill of Materials for 01 TLS (04 classrooms, 01 Black Board) and 01 Block of a 04 Stance Latrine at Majak primary school

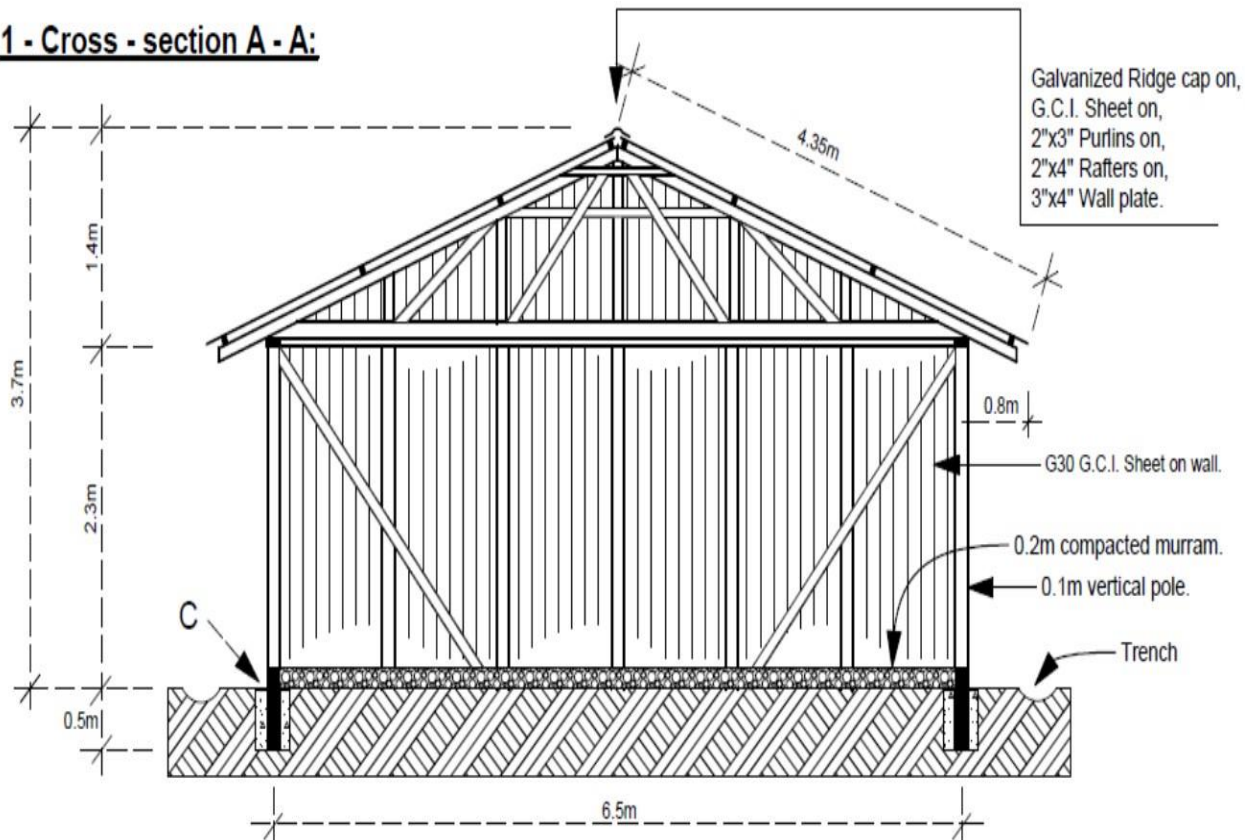
S/N	Item/Description	Unit	Quantity	Rate	Amount
1	Cement	Bag	6		
2	Timber 6x2" - 4M Long	Pc	40		
3	Timber 4x2" - 4M Long	Pc	50		
4	Timber 3x2" - 4M Long	Pc	80		
5	Timber 2x2" - 4M Long	Pc	4		
6	G28 ordinary Iron sheet	Pc	140		
7	Nails 6"	Kg	15		
8	Nails 5"	Kg	20		
9	Nails 4"	Kg	25		
10	Nails 3"	Kg	25		
11	Nails 2.5"	Kg	20		
12	Roofing Nails	Kg	10		
13	Rubber washers/caps	Pkt	2		
14	Hoop Iron	Rolls	1		
15	Welded Chicken Mesh 2.4x1.2 M	Pcs	14		

16	Premier paints - Weather Guard(white)	Tins	2		
17	Painting brush - 4"	Pcs	4		
18	Hinges - 4" Aluminium type	Pair	4		
19	Tower bolts - Medium	Pcs	4		
20	Tower bolts - big	Pcs	4		
21	Padlock - Bigger size(100mm) - Tricircle	Pcs	4		
22	Wood preservatives	J'cans	2		
23	Anti - Termite Chemical - 1 Ltr tin	Tins	2		
24	Aggregate + Transport	Trip	0.5		
25	Sand + Transport	Trip	0.5		
26	Hack Saw blades	Pcs	1		
27	Bow Saw Frame + Blades	Pcs	2		
28	Metallic Spade	Pcs	1		
29	Teachers' Chair and Table	NO	2		
30	75mm PVC Pipes + Vent Covers - 6M Long	Pcs	1		
31	Rice Bags	Pcs	100		
32	250 Ltr Plastic tank for hand washing(with tap) + Welded stand	Pcs	1		
33	Allow for Visibility cost	Item	1		
34	Wheel barrow	Pcs	1		
35	Total materials Cost				

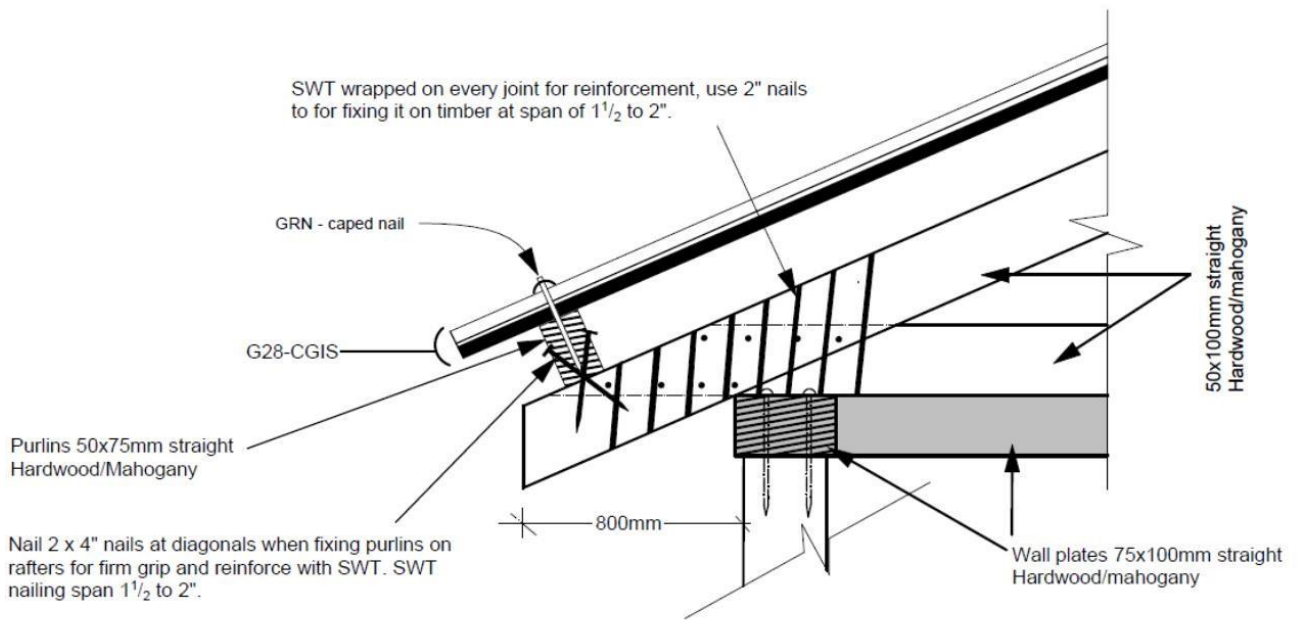
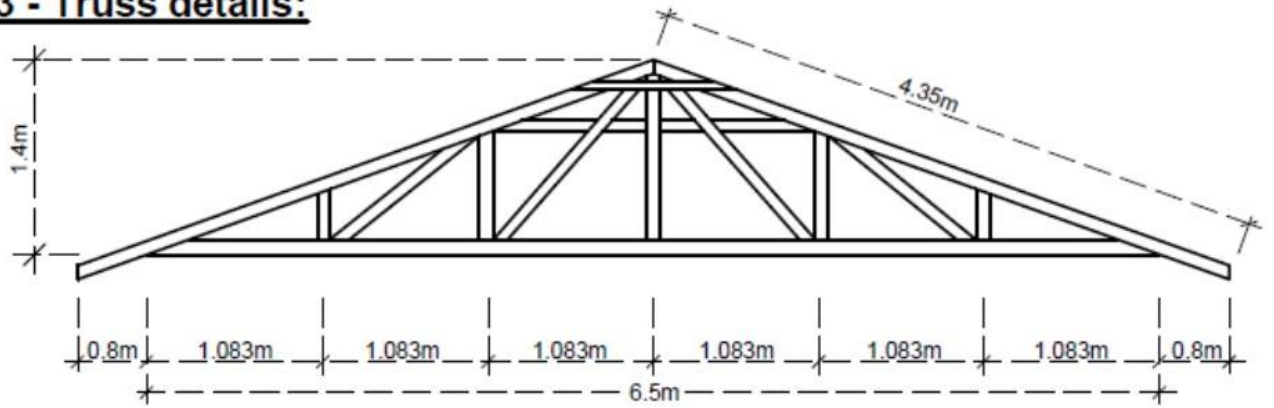
1. Annex iii - TLS technical drawing



1 - Cross - section A - A:



3 - Truss details:



2.