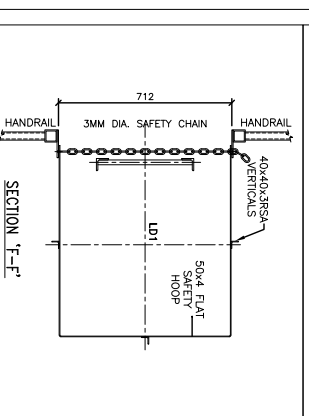
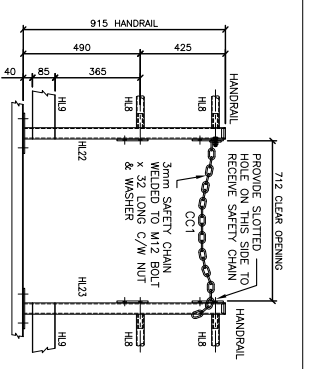


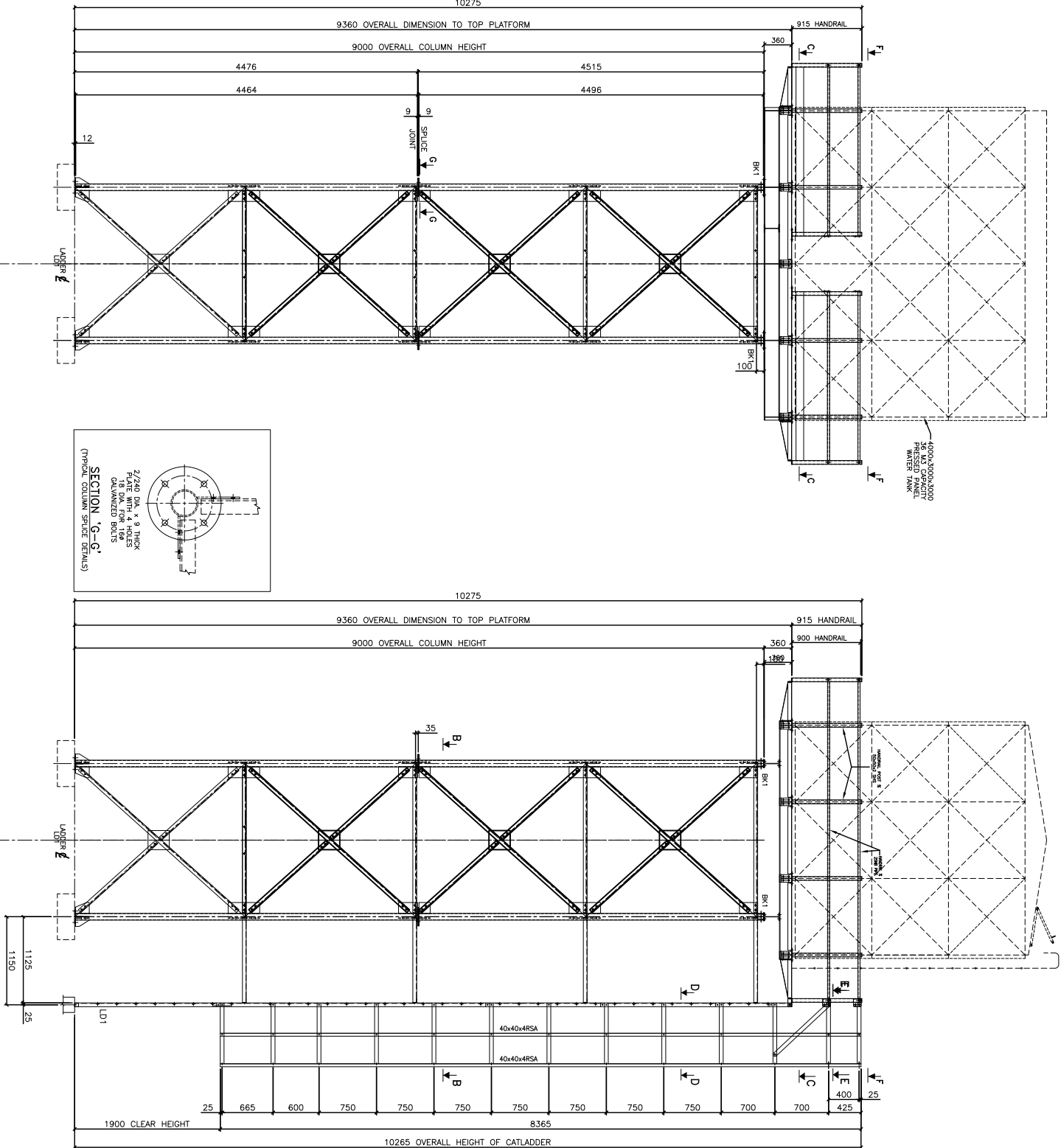
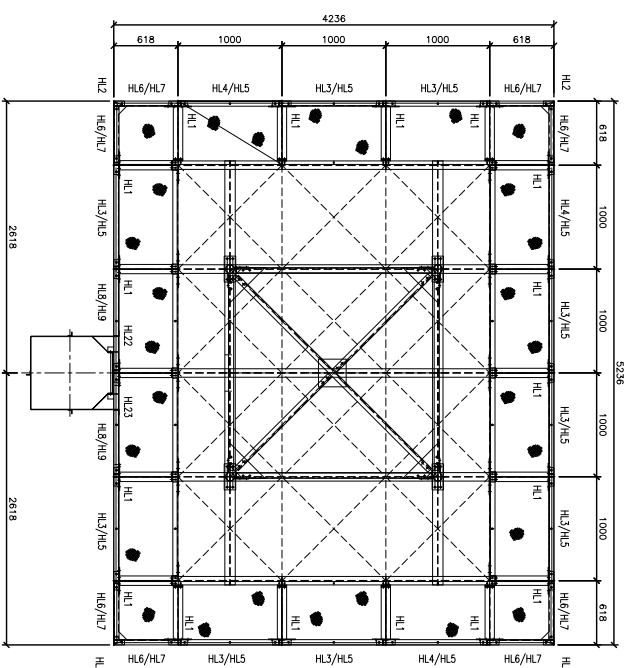
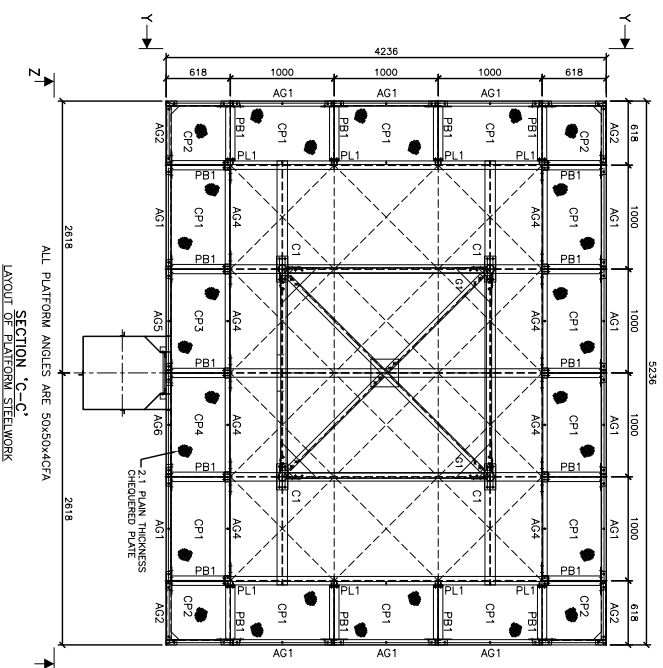
GENERAL NOTES:

1. STEELWORKS TO BE WIRE BRUSH CLEAN PRIOR TO PAINT APPLICATION.
2. PAINT ONE COAT OF ZINC PHOSPHATE PRIMER AFTER FABRICATION.
3. PAINT ONE COAT OF SILVER ALUMINIUM PAINT PRIOR TO DISPATCH.



REV.	A	B	C
REV.	DESCRIPTIONS.		DATE

SUPPLY OF 9M HIGH TANK TOWER



GENERAL ARRANGEMENT OF STEELWORK

