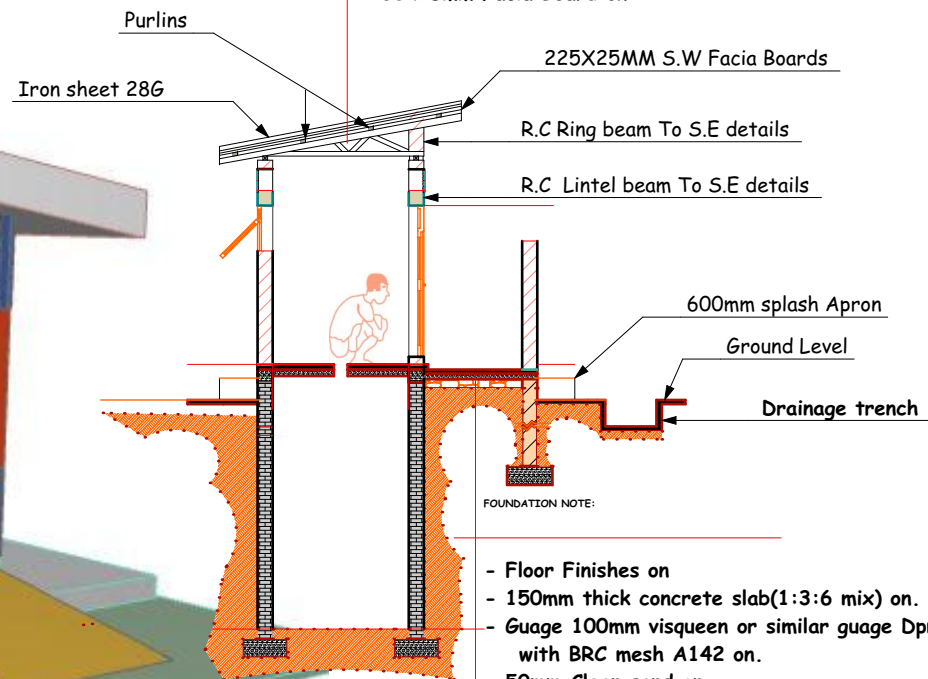


ROOFING NOTE:

- 15 degree roofing pitch of
- Plain corrugated galvanised roofing iron sheet.
- 100x50mm purlins on.
- 100x50mm Rafters on.
- 100x50mm Strusses & Tie on.
- 150x50mm Ties Beam on.
- 100x75mm Wall plate on.
- 230x25mm Facia Board on



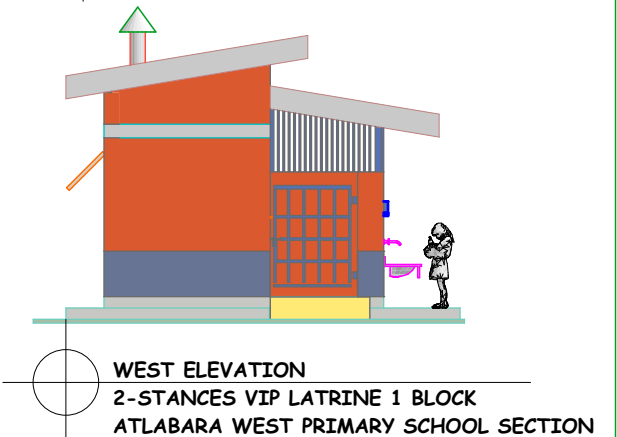
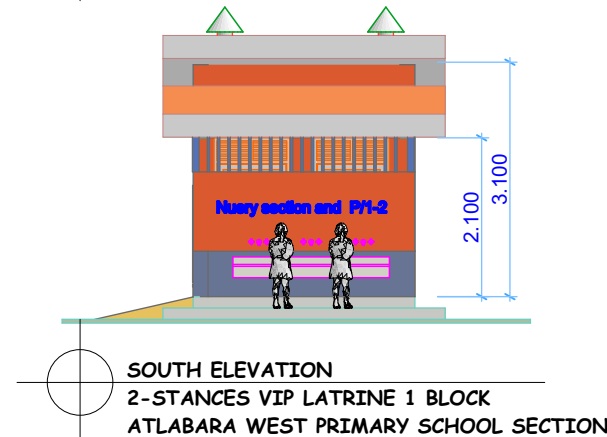
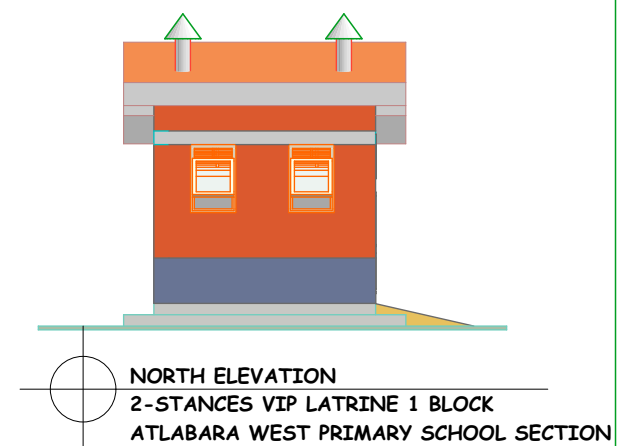
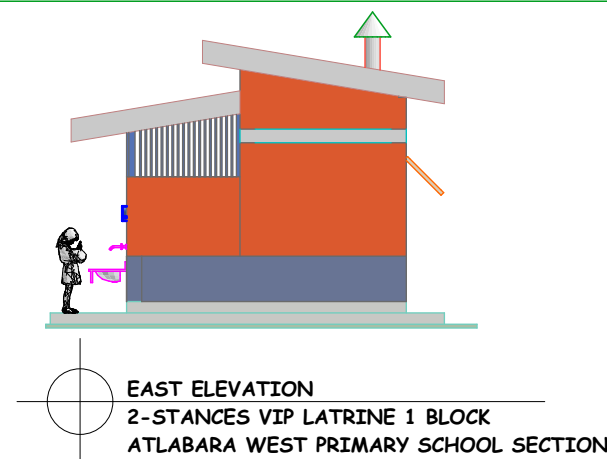
FOUNDATION NOTE:

- Floor Finishes on
- 150mm thick concrete slab(1:3:6 mix) on.
- Gauge 100mm visqueen or similar gauge Dpm with BRC mesh A142 on.
- 50mm Clean sand on.
- 150mm Hardcore on.
- Well compacted treated laterite on.

SECTION A-A

2-STANCES VIP LATRINE 1 BLOCK
ATLABARA WEST PRIMARY SCHOOL SECTION

Scale: 1:100



NOTES:

DATE:

SIGN:

DRAWING TITLE:

DONOR:

PROJECT:

IMPLEMENTER:

DESIGNED

NOTE:

1. All dimension are in meter unless stated
2. Do not scale the drawing incase of any descrepency consult architect.
3. All external wall are 2230mm incude plaster
4. Refer to note for finishes and details
5. These note are to be read in conjunction with the specialist drawing

Proposed Rehabilitation
of 2-stance vip latrine at
1- Atlabara West P/S
2- DMI Primary school.
3- Gumbo Basic Prim. school.
4- Libya 1&2 primary school



Proposed "Strengthening
Community Resilience in
South Sudan's Urban
Settings"
WASH in schools and
Health Facilities.



Drawn By:
Engr. Okenyi Samuel

23/FEB/2023