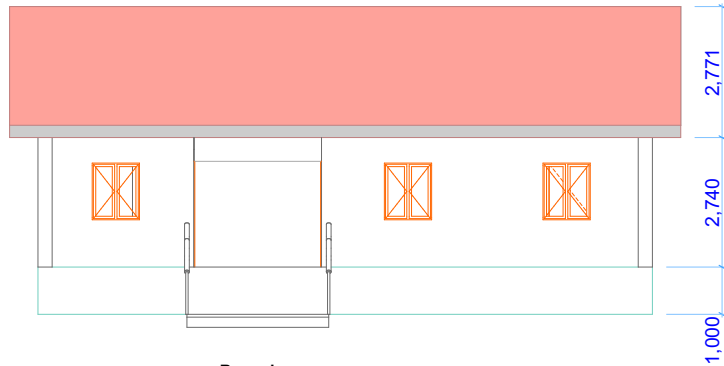
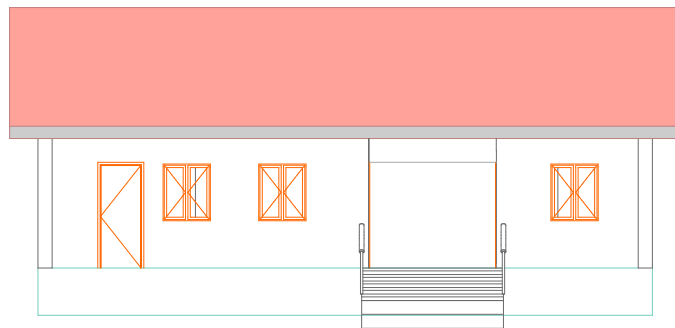


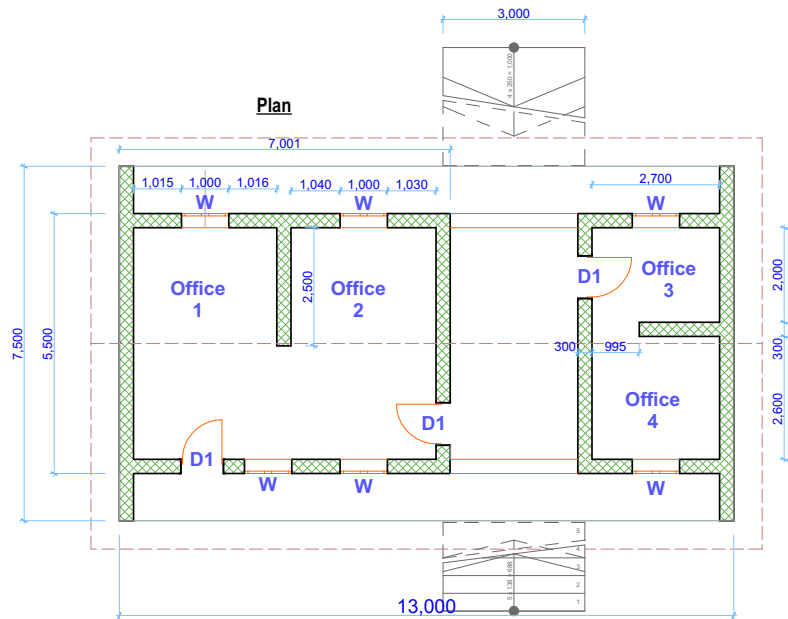
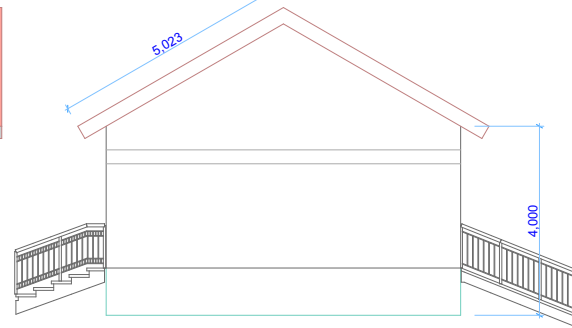
**Rehabilitation of Kegulu PHCU and WASH facility in Yei County**



**Rear view**



**Side View**



**Plan**

**Exterior ,Interior Wall and Floor Details**

**Exterior wall:**

- Apply 20 mm thick cement sand (seived)1:3 plaster finished
- Apply 1 coat of budget emulsion paint and 2 costs of weather guard painted(color will be advised)

**Interior Wall:**

- Apply 20 mm thick cement sand (seived)1:3 plaster finished
- Apply 20mm cement sand (1:4) mortar, lime putty (1:10 finished) with 1coat of budget emulsion paint, 2 finishing coats of silk vinyl emulsion paint (color will be advised)
- 2 coats 150mm high skirting of approved oil paint

**Doors schedule**

No.	Desc-	Qty	Size
D1	Metal	3	2200 X 900

**Windows schedules**

	Metal with glasses	6	1200 X 1000
--	--------------------	---	-------------

**Note**

All dimensions are in MM  
Scale 1:1

**PROJECT TITLE**

Proposed Rehabilitation of Kegulu PHCU and latrine block in Yei County

**FUNDED BY AA**



Implemented by: Malteser International

