

Malteser Hilfsdienst e. V., Malteser International, Erna-Schaeffler-Str. 2, 51103 Cologne, Germany

**Malteser International
Wau Office
Hai Daraja West Residential Area
Next to CARE International Office
Wau, South Sudan**

Date: 1 December 2021

**Request for Quotations
RFQ_WAU_2021_0317**

for construction of VIP institutional latrine in Uyujuku Market in Western Bahr el Ghazal under project 1357-WAU.

Construction of VIP Institutional latrine

- A. Annex 1: Specification of Bidding
- B. Annex 2: Bill of Quantity
- C. Annex 3: Sketch for Institutional Latrine (attached)

We look forward to receiving your tenders on **8th December 2021 at or before 4:00pm** via E-mail to: **mb.procurement-juba@malteser-international.org** or in a sealed envelope in Malteser International Wau Office West Residential Area Next to CARE International Office in Hai Daraja in Wau from Monday to Friday from 9:00am to 4:00pm.

Please write in the Subject line of your email with tender: **“RFQ_WAU_2021_0317 for construction of latrine”**.

Sincerely Yours,


Nermin Silajdzic of Malta Worldwide Relief
Country Logistics and Security Coordinator
Plot No. 445, Block 3, Kofalo - US Embassy Road.
Central Equatorial State, Juba, South Sudan
M: +211 (0) 911 946 963 · M: +211 (0) 924 767 949
nermin.silajdzic@malteser-international.org · Skype: nsilajdzic
www.malteser-international.org
Malteser International Europe/Malteser Hilfsdienst e. V., County Court Cologne, VR 4726
Executive Board: Karl Prinz zu Löwenstein, Dr. Elmar Pankau,
Douglas Graf Saurma-Jeltsch, Verena Hölken

Legal advice: This communication is for use by the intended recipient and contains information that may be privileged, confidential or copyrighted under applicable law. If you are not the intended recipient, you are hereby formally notified that any use, copying or distribution of this e-mail, in whole or in part, is strictly prohibited. Please notify the sender by return e-mail and delete this e-mail from your systems.
Please consider the environment before printing this email

Malteser Hilfsdienst e. V., Malteser International, Erna-Schaeffler-Str. 2, 51103 Cologne, Germany

A. SPECIFICATION OF THE TENDERS

Related to our RFQ_WAU_2021_0317 MI herewith calls tenders for construction of VIP institutional latrine in Uyujuku Market in Western Bahr el Ghazal.

1. Description of the organization and its activities

Objective of the Request for Quotation: In accordance with the overall project targets of the above-mentioned operations, MI plans to construction of VIP institutional latrine in Uyujuku Market in Western Bahr el Ghazal project 1357-WAU.

Competent and qualified companies are therefore invited to present tenders complying with the requirements specified.

2. Tender Presentation

The tender shall be received via E-mail to: **mb.procurement-juba@malteser-international.org** or in a sealed envelope in Malteser International Wau Office West Residential Area Next to CARE International Office in Hai Daraja in Wau from Monday to Friday from 9:00am to 4:00pm on **8th December 2021 at or before 4:00pm at or before 4:00pm**

- The tender shall be written in English.
- The tender should be valid for **60 days after the deadline.**
- The format BoQ can be used or a separate one depending on supplier's choice.

3. General conditions

- The tender shall be typed or written and signed on each page by the legal representative of the supplier,
- The winning supplier might be requested to provide catalogues, pictures, technical descriptions and/or samples of items at the order stage when required,
- The prices of the tender will be expressed in United States Dollars. The prices must be on unit price basis as well as by totals,
- The prices will be considered fixed. No additional change of whatsoever nature and type will be accepted by Malteser International,
- Malteser International reserves the right to accept or reject all tenders depending on prevailing condition at the time.

4. Timetable

Activities	Date	Time*
Deadline for submission of tenders	8 December 2021	04:00 p.m.
Notification of award to the successful contractor	14 December 2021	-
Signature of contract agreement	15 December 2021	-

* All times are local time in Wau, South Sudan

5. Validity of tenders

Each company is bound to the tender submitted for a period of 60 days from the deadline for submission of tenders.

Malteser Hilfsdienst e. V., Malteser International, Erna-Schaeffler-Str. 2, 51103 Cologne, Germany

6. Language of tenders

All tenders, official correspondence between companies and MI, as well as all documents associated with the tender request will be in English.

7. Submission of tenders

All tenders must conform to the following conditions:

Each tender must have received via E-mail to: mb.procurement-juba@malteser-international.org or in a sealed envelope in Malteser International Wau Office West Residential Area Next to CARE International Office in Hai Daraja in Wau from Monday to Friday from 9:00am to 4:00pm on **8th December 2021 at or before 4:00pm at or before 4:00pm.**

8. Content of tender

All submitted tenders must conform to the requirements mentioned in the request for bid. Furthermore, they must include the following documents:

Part 1 - Tender: A tender for construction of VIP institutional latrine in Uyuju Market in Western Bahr el Ghazal. The formatted BOQ can be used or a separate one depending on supplier's choice. Additional sheets may be attached for further details.

Part 2 - Legal documents

- Copy of the company's certificate of incorporation,
- Copy of Chamber of Commerce registration,
- Copy Tax Identification Certificate,
- Copy of Certificate of Operation,
- Company's Bank Statement of last three months,
- Company's official address,
- Bank account details (where money would be paid)

9. Ownership of tenders

MI reserves/funds ownership of all tenders received. Consequently, bidders will not be able to stipulate requirements that their tenders are to be returned.

10. Opening of submitted tenders.

The Evaluation Committee will open the tenders on 8th December 2021 in MI Country Coordination Office in Juba, South Sudan. The Evaluation Committee will record the selection process in writing.

11. Tender evaluation

The criteria applied for the evaluation will be the legal conformity, the price, the technical experiences, the compliance with technical specifications and quality standards, and the capacity to deliver and delivery time. The supply will be awarded to the winning bidder according to the timetable mentioned above.

13) Specific Technical and Financial Evaluation Criteria to standards:

- Comparative Bid Analysis and justification basing on responsiveness of the selected supplier by evaluation committee.
- Contract agreement will directly be issued to the selected supplier upon approval.

Malteser Hilfsdienst e. V., Malteser International, Erna-Schaeffler-Str. 2, 51103 Cologne, Germany

14) Terms of payment

The payment for the goods/services supplied will be in United States Dollar by bank transfer or cheque as specified below:

- Payment will be done after 15 days upon successful completion of construction of VIP institutional latrine in Uyujuke Market in Western Bahr el Ghazal and supporting invoices from the Supplier to MI Office.

Annex 2: Bill of Quantity

For construction of VIP institutional latrine in Uyujuke Market in Western Bahr el Ghazal

No	Item Description	Unit	Qty	Unit Cost (USD)	Total Cost (USD)
A	Sub structure				
1.1	Earth work in excavation by means [manpower] measuring 4.0m Long X 1.2m Width by 6.0m Deep including back filling and removal of surplus excavated materials from site.	CM	28.8		
1.2	Excavate uniformly strip foundation , 200mm away and round the excavated pit , with a depth of 500mm and width of 300mm, including curtain walling foundation excavation as per design	CM	3.1		
1.3	Provide formwork and Masonry work using 200mm burnt brick with cement mortar ratio mix of 1:4 from strip foundation to a height of 200mm above ground level (This includes the foundation walling for the curtain wall)	LM	11.2		
1.4	Slab work of thickness 150mm , concrete mix of 1:2:3, Steel reinforcement for R.C.C. 12mm high tensile bar and 8mm mild bar work including straightening, cutting, bending, placing in position and binding all complete cover and ground beam of 150mm thick. (Provision for openings for vent pipe installation and pit to be considered). The slab covers the entire walking area within the curtain wall.	SM	15		
	Subtotal 1				
B	Superstructure				
1.1	Walling , ventilation and door				
1.1.1	Supply and install 200 mm wide bituminous felt Dump Proof Course	SM	10		
1.1.2	Construct a 200mm thick super-structure wall with well burnt clay bricks with mortar mix of 1:4 up to the roof level, including wall partitioning (same wall size)	SM	32.9		



Malteser Hilfsdienst e. V., Malteser International, Erna-Schaeffler-Str. 2, 51103 Cologne, Germany

1.1.3	Cast 200mm reinforced concrete (1:2:4) ring beam, lintel and front side as shown in the drawing including formworks.	SM	0.92		
1.1.4	Supply and install 4" PVC vent pipes for each stance	LS	1		
1.1.5	Provide and install strongly fabricated door with size of 2.2m X 1.0m made from solid metallic doors with 10cm x 5cm x 3mm RHS section as frame. The panel or shutter consists of 1.2 mm thick iron sheet welded with the RHS frame. The door will be painted with base coat of Red oxide and two finishing coats of light blue color. Pad bolt on outside and simple two bolts on inside will be welded. All the doors will open inside in clockwise direction.	Set	4		
1.1.6	Provide and install well fabricated ventilator with dimensions of 0.4m X 0.3m) made of solid metallic burglar fix Ventilator having strong mosquito mesh. The frame is made of 4cm x 4cm x 3mm thick RHS. Red oxide will be used as base coat and two coats of Light blue color paint as finishing coat.	Set	4		
Subtotal 2					
1.2 Curtain walling					
1.2.1	Supply all materials and construct a 200mm thick super-structure wall with well burnt clay bricks with mortar mix of 1:4 up to a height of 1500mm above ground level as per design shown	SM	13.2		
Subtotal 3					
1.3 Roofing (all materials included e.g nails)					
1.3.1	Supply all required items and construct flat roof (pitch angle of 15 degrees) as per the drawing (hard timber rafter, wall plate, 4"X2", hard timber purlins 3"X2", hard timber facial boards 9"X1" smoothly sharp including painting and pre-painted corrugated roofing sheets gauge 28) at the roof plan area as shown in the drawing	SM	10		
Subtotal 4					
1.4 Finishes (Plastering, Steel cement rendering , painting)					



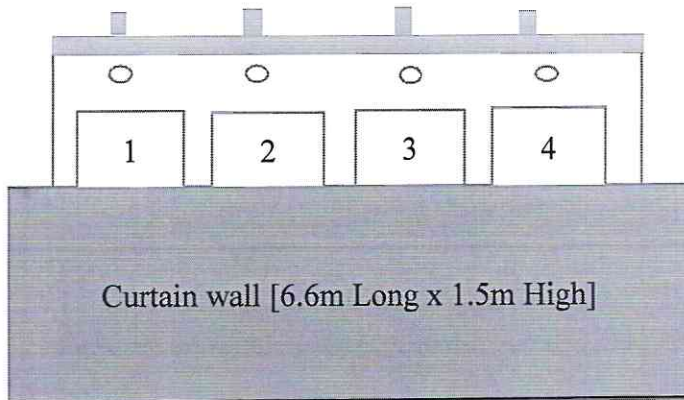
Malteser Hilfsdienst e. V., Malteser International, Erna-Schaeffler-Str. 2, 51103 Cologne, Germany

1.4.1	Plastering Internal and external plastering 15mm thick with 1:4 cement sand mortar will be directed by Site Engineer	SM	68.3		
1.4.2	Steel cement rendering Rendering smooth cement on all the concrete floor, and the surrounding aprone.	SM	2.4		
1.4.3	Painting Prepare surface, apply primer coats and three coats of plastic emulsion paint to exterior and interior skirted 30 cm with oil paints. [Cream paint for walling]	SM	68.3		
Subtotal 5					
Total					

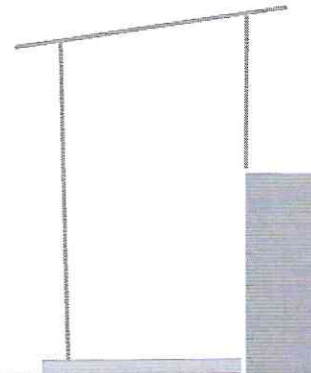
ANNEX C: Sketch of Institutional latrine

Malteser Hilfsdienst e. V., Malteser International, Erna-Schaeffler-Str. 2, 51103 Cologne, Germany

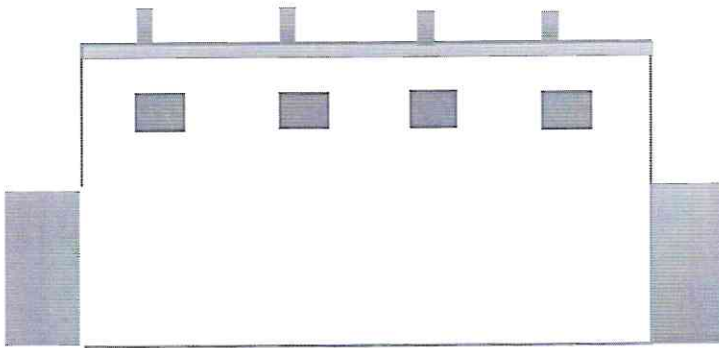
SKETCH OF A FOUR (4) STANCE VENTILATED IMPROVED PIT LATRINE (VIP) – UYUJUKU MARKET
FRONT VIEW



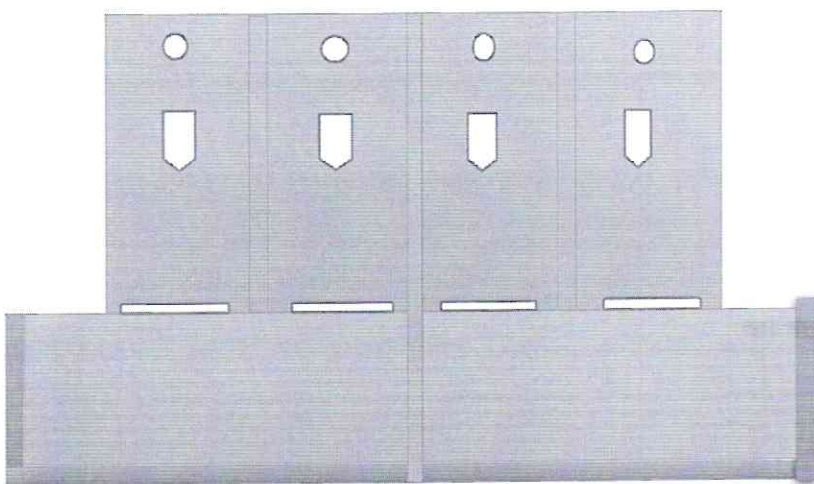
SIDE VIEW



BACK VIEW



AERIAL VIEW FOR SLAB & WALLING (EX. ROOFING)



NOT DRAWN TO SCALE

FOR DIMENSIONS, REFER TO BILL OF QUANTITIES SHARED ALONGSIDE THE SKETCH

Malteser Hilfsdienst e. V., Malteser International, Erna-Schaeffler-Str. 2, 51103 Cologne, Germany

On behalf of Malteser International

Date: 1st December 2021

Yours faithfully,




Nermin Silajdzic
Country Logistics and Security Coordinator
Plot No. 445, Block 3, Kule, US Embassy Road,
Central Equitorial State, Juba, South Sudan
M: +211 (0) 911 746 963 · M: +211 (0) 924 767 949
nermin.silajdzic@malteser-international.org · Skype: nsilajdzic
www.malteser-international.org

Malteser International Europe/Malteser Hilfsdienst e. V., County Court Cologne, VR 4726
Executive Board: Karl Prinz zu Löwenstein, Dr. Elmar Pankau,
Douglas Graf Saurma-Jeltsch, Verena Hölken

Legal advice: This communication is for use by the intended recipient and contains information that may be privileged, confidential or copyrighted under applicable law. If you are not the intended recipient, you are hereby formally notified that any use, copying or distribution of this e-mail, in whole or in part, is strictly prohibited. Please notify the sender by return e-mail and delete this e-mail from your systems.

Please consider the environment before printing this email