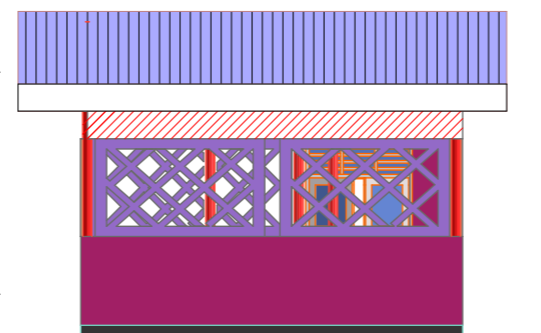


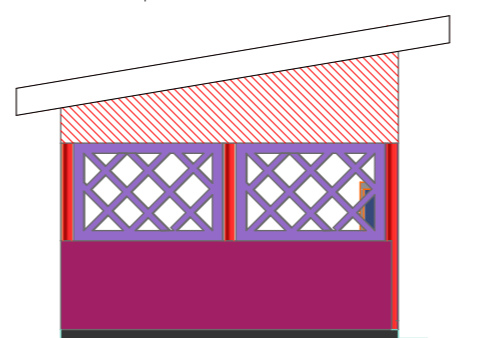
East Elevation



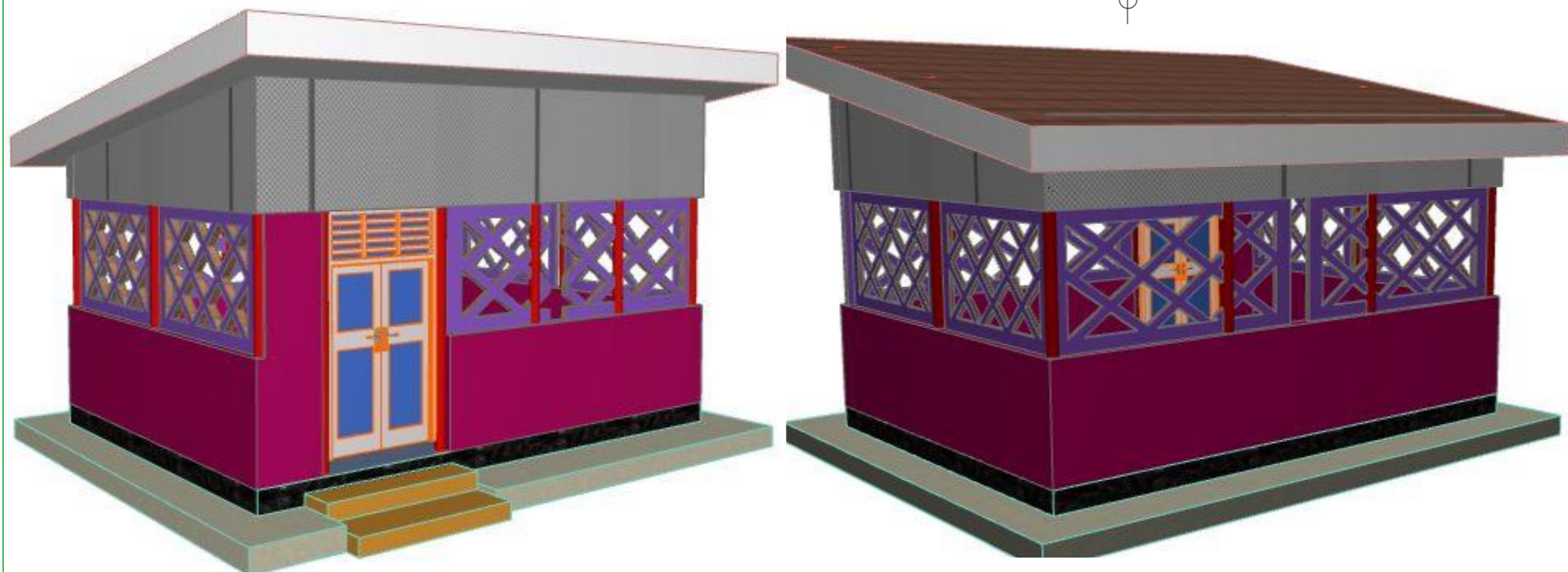
North Elevation



South Elevation

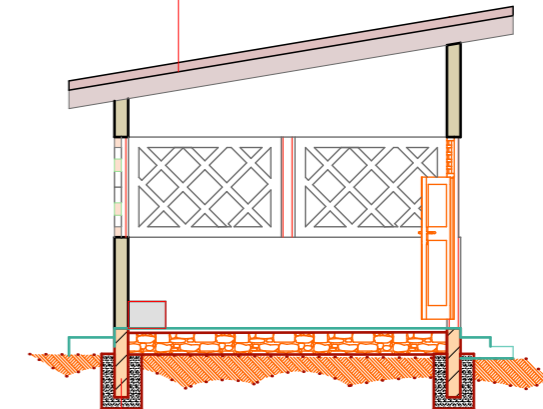


West Elevation



ROOF NOTES

- Gauge 28 corrugated iron sheet on 25 degree.
- 50x100mm Purlins.
- 100x50mm struts and Tie on.
- 150x75mm Tie beam
- 50x100mm wall plate



FOUNDATION NOTE:

Floor finish shown on,
 50mm (1:3) cement sand screed on,
 200mm (1:2:4) concreted floor slab on,
 200mm average hard core on,
 Well compacted &rammed earth fill in,
 200x600mm concrete strip foundations
 Foundation depth to be determined on site
 by the engineer in charge

NOTES:	DATE:	SIGN:	DRAWING TITLE:	DONOR:	PROJECT:	IMPLEMENTER:	DESIGNED
NOTE: 1. All dimension are in meter unless stated 2. Do not scale the drawing incase of any descrepency consult architect. 3. All external wall are 2230mm incude plaster 4. Refer to note for finishes and details 5. These note are to be read in conjunction with the specialist drawing			Proposed Constraction of kitchen	 unicef for every child	Proposed kitchen for the school feeding program	 Malteser International <small>Order of Malta Worldwide Relief</small>	Drawn By: Engr. Okenyi Samuel

12/DEC/2022