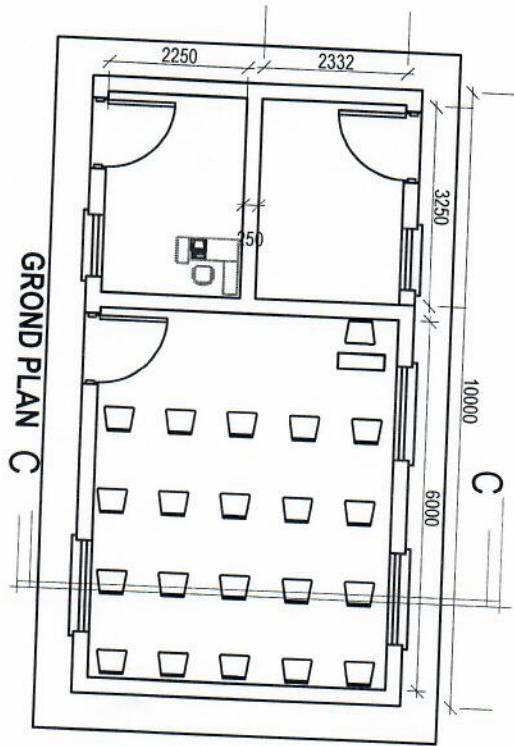
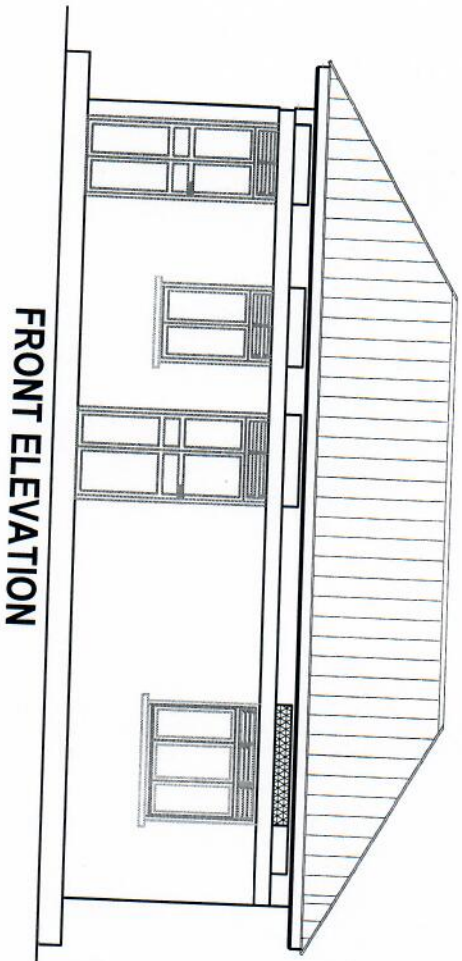
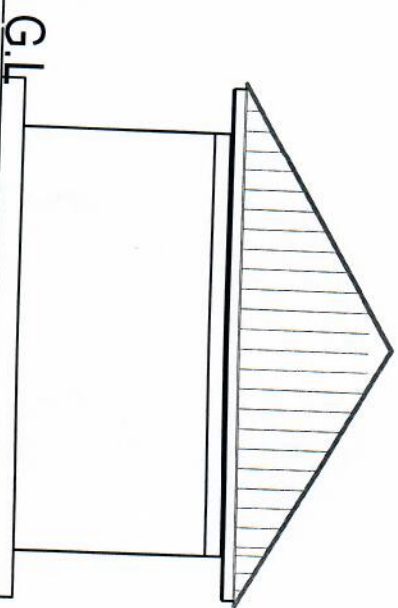


SITE LAY OUT





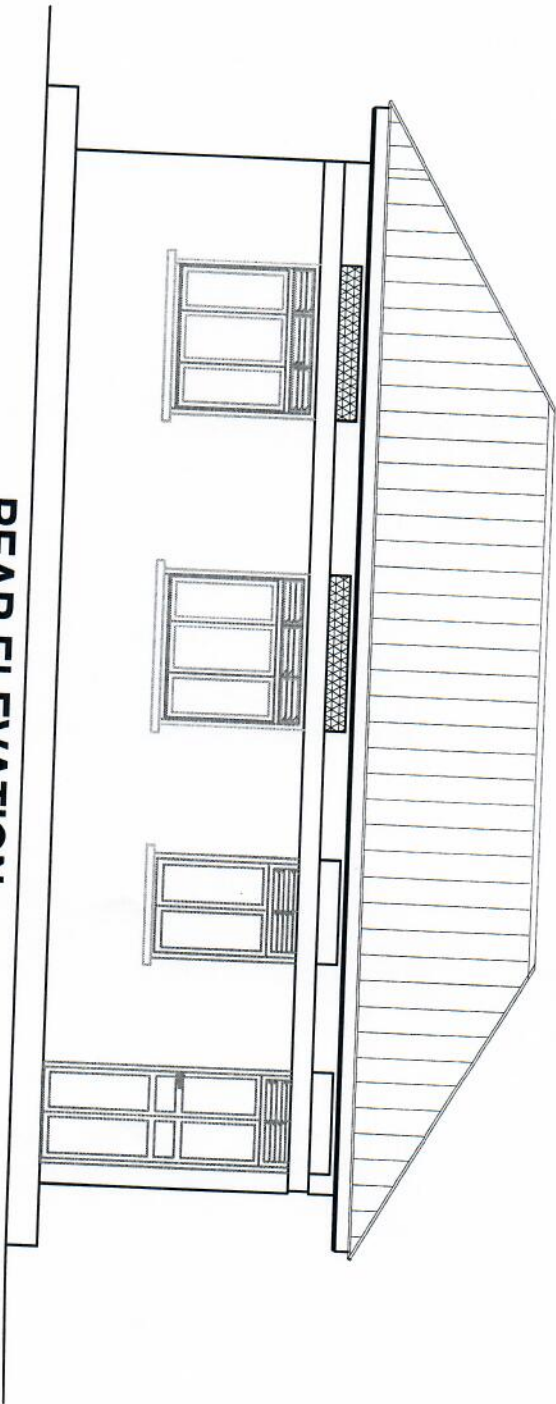
FRONT ELEVATION



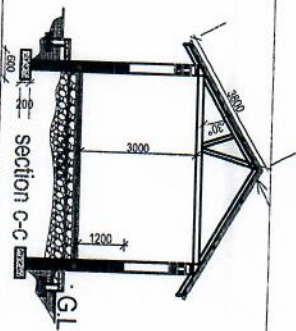
SIDE ELEVS

G.L.

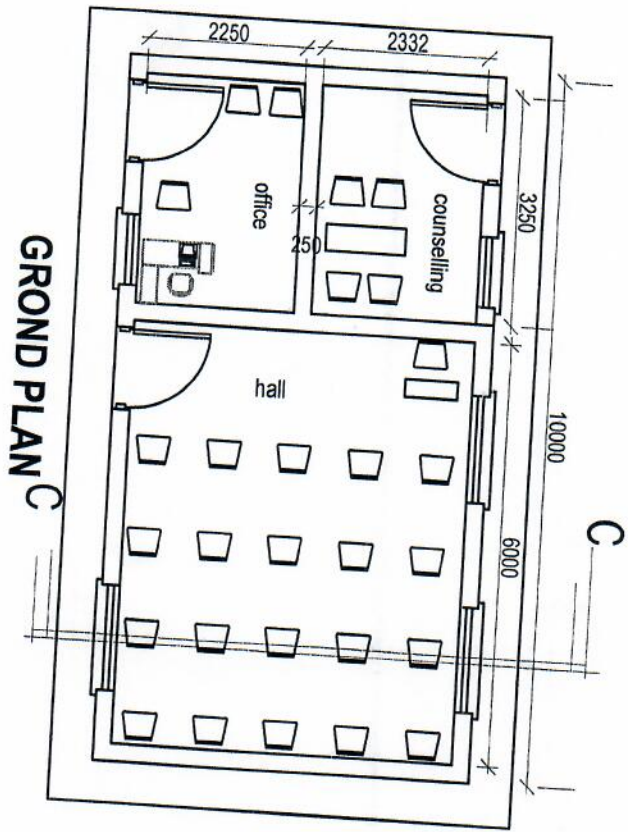
**REAR ELEVATION**



Roof pitch 28°  
G.I sheets G28, Ridge caps on;  
75x50 purlins, on 100x50 rafters, ties & struts on 150x50 tie  
beams on 100x75 wall plate on 225 walls.  
bradings & 100x50 joists.



100mm over site concrete on G100 DPM on 200mm hard core on a  
well compacted firm ground.  
Strip foundation to be 200x600mm and depth of foundation to be  
determined on site.  
All measurements in mm otherwise stated.



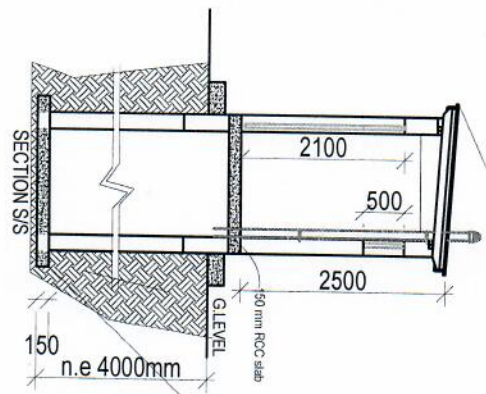
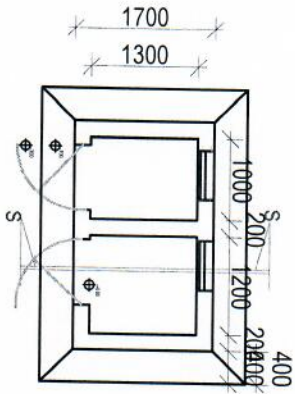
### DOOR AND WINDOW SCHEDULES

D1	1	2400	1000	Prefab steel glazed casement
D2	1	2400	900	Prefab steel plate casement
W1	3	1400	1500	Prefab steel glazed casement
W2	1	1400	1000	Ditto

All measurements in mm otherwise stated.

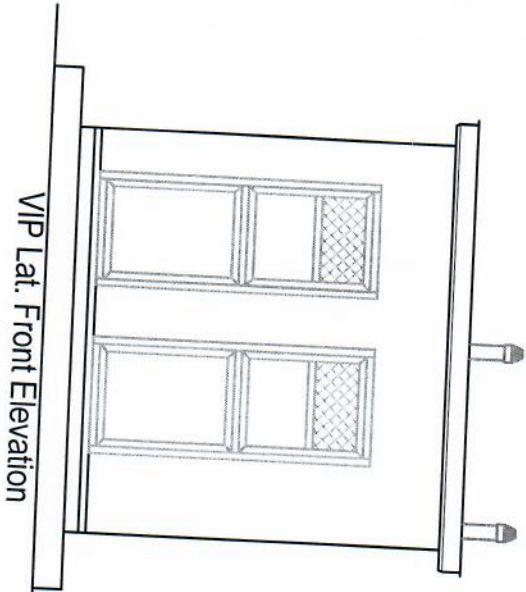


Ground Plan for VIP

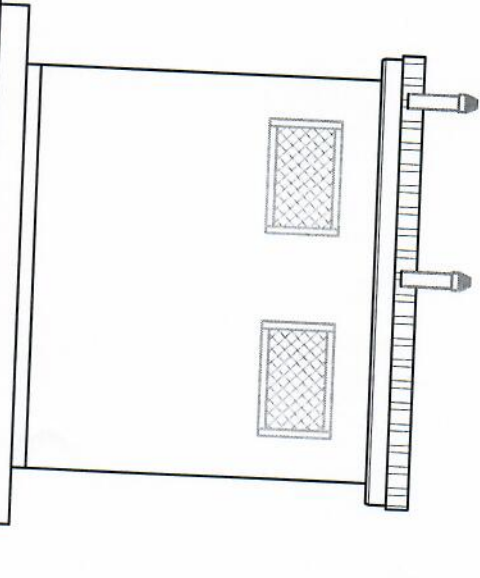


RCC flat roof on 225 walls.

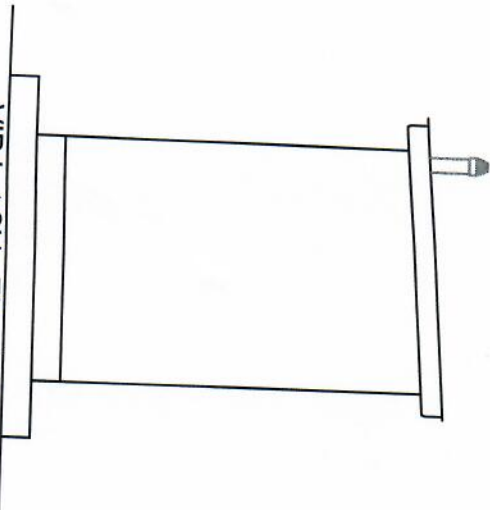
Squaring pan on 25mm thick cem./sand screed on 150mm RCC slab on 200mm thick pit lining 150 mm base concrete on firm ground base. Depth of pit n.e 4000 mm All measurements in mm otherwise stated.



VIP Lat. Front Elevation

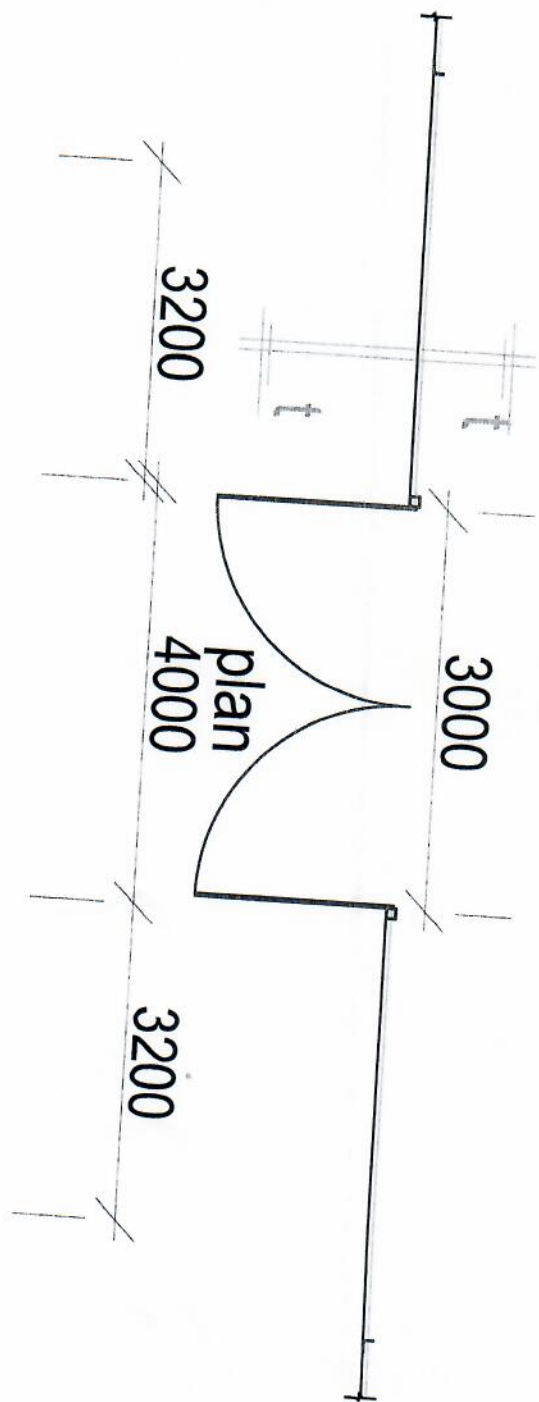


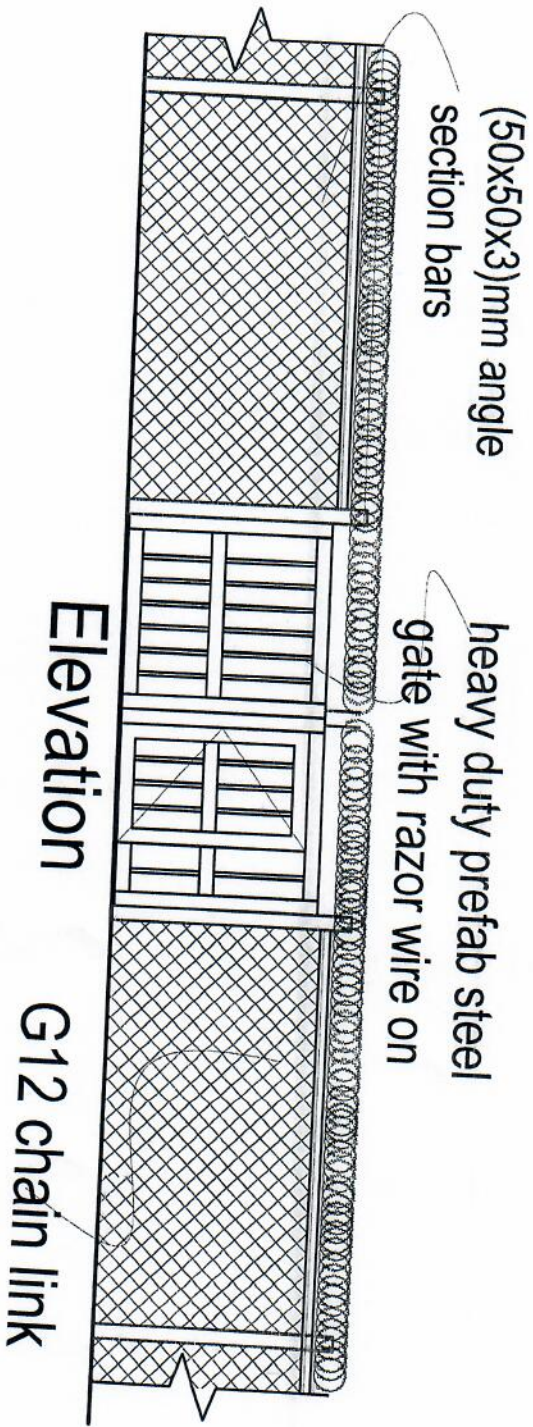
VIP lat. Rear Elevation

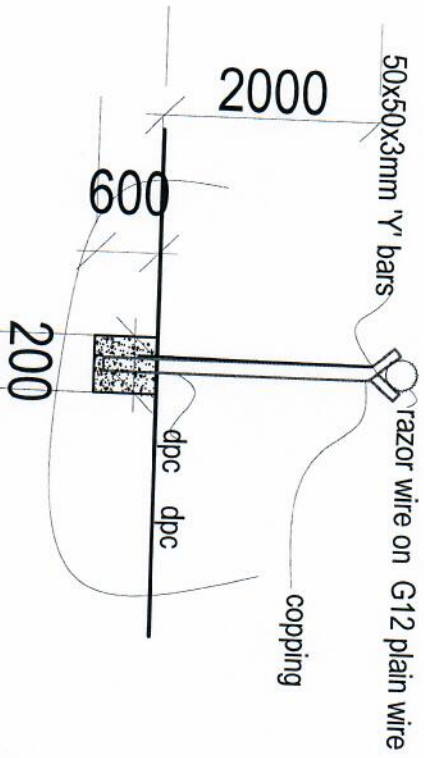


VIP Lat Side Elevation









# Perimeter Wall Fence