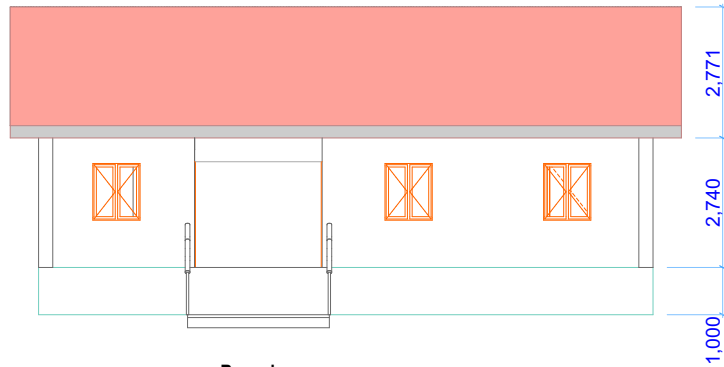
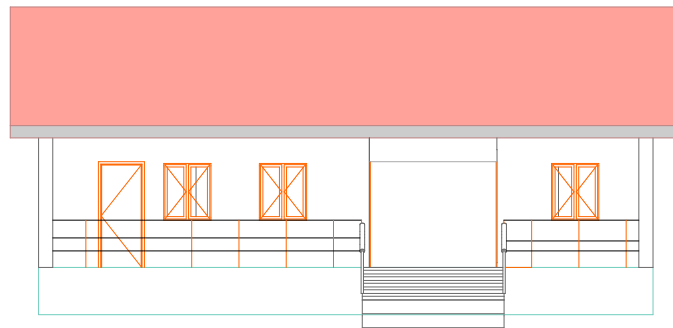


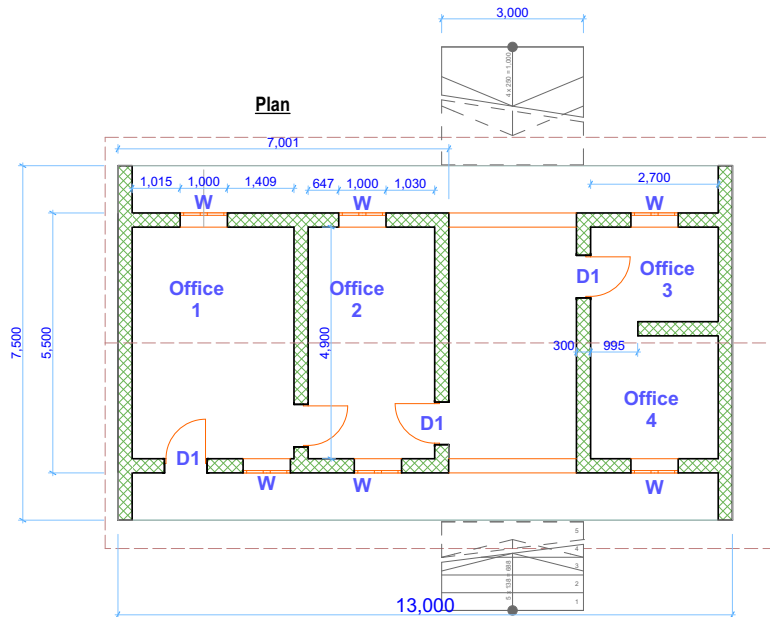
**Rehabilitation of Payawa PHCU and
WASH facility in Yei County**



Rear view



Side View



Plan

Exterior ,Interior Wall and Floor Details

Exterior wall:

- Apply 20 mm thick cement sand (seived) 1:3 plaster finished
- Apply 1 coat of budget emulsion paint and 2 costs of weather guard painted(color will be advised)

Interior Wall:

- Apply 20 mm thick cement sand (seived) 1:3 plaster finished
- Apply 20mm cement sand (1:4) mortar, lime putty (1:10 finished) with 1coat of budget emulsion paint, 2 finishing coats of silk vinyl emulsion paint (color will be advised)
- 2 coats 150mm high skirting of approved oil paint

Doors schedule

No.	Desc-	Qty	Size
D1	Metal	3	2200 X 900

Windows schedules

	Metal with glasses	6	1200 X 1000
--	--------------------	---	-------------

Note

**All dimensions are in MM
Scale 1:1**

PROJECT TITLE

Proposed Rehabilitation of Payawa PHCU and latrine block in Yei River County

FUNDED BY AA



german humanitarian assistance
DEUTSCHE HUMANITÄRE HILFE

Implemented by: Malteser International



Malteser International
Order of Malta Worldwide Relief