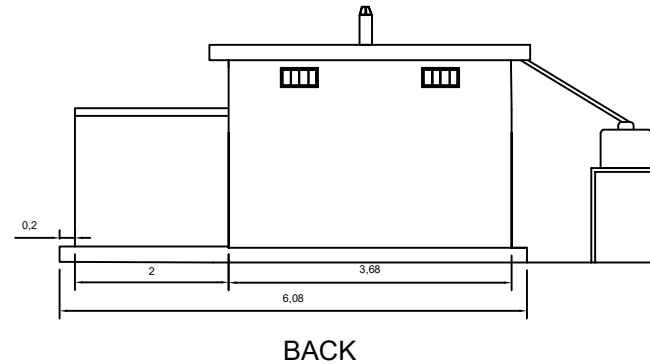
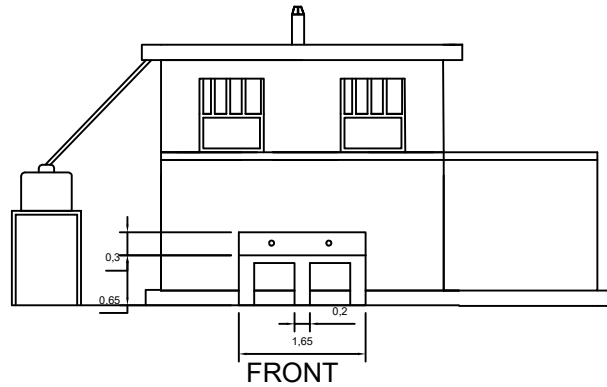
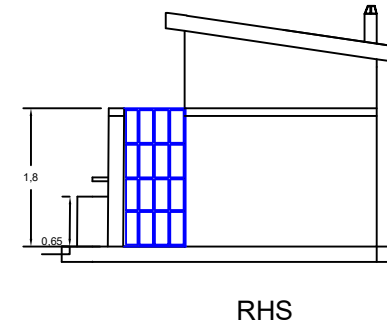
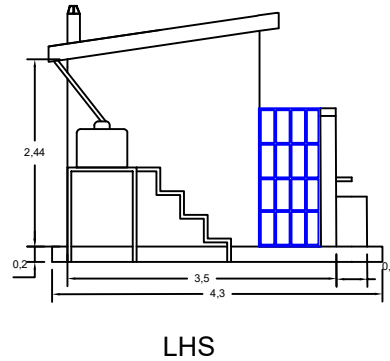
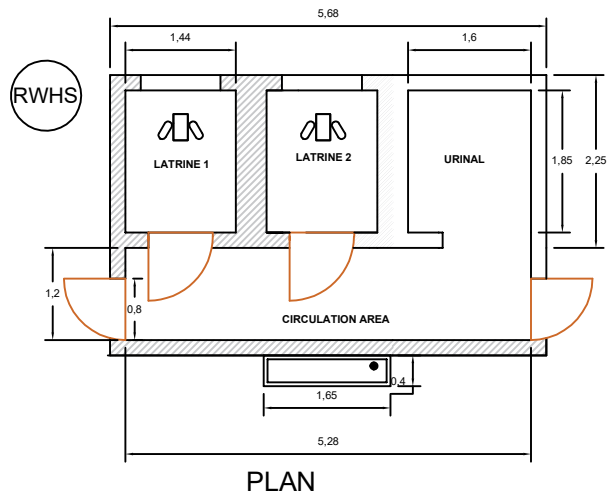


REHABILITATION OF 2-STANCE PIT LATRINE IN ILLINGARI PRIMARY SCHOOL



NOTE

- All dimensions are in meters unless stated
- Iron sheet is G28 corrugated and light blue coated
- All external walls are 200mm
- Grill door, tank stank and stair case are sq. hollow section 40 X 40 mm

DRAWING SCALE
1:100

DONOR



IMPLEMENTER



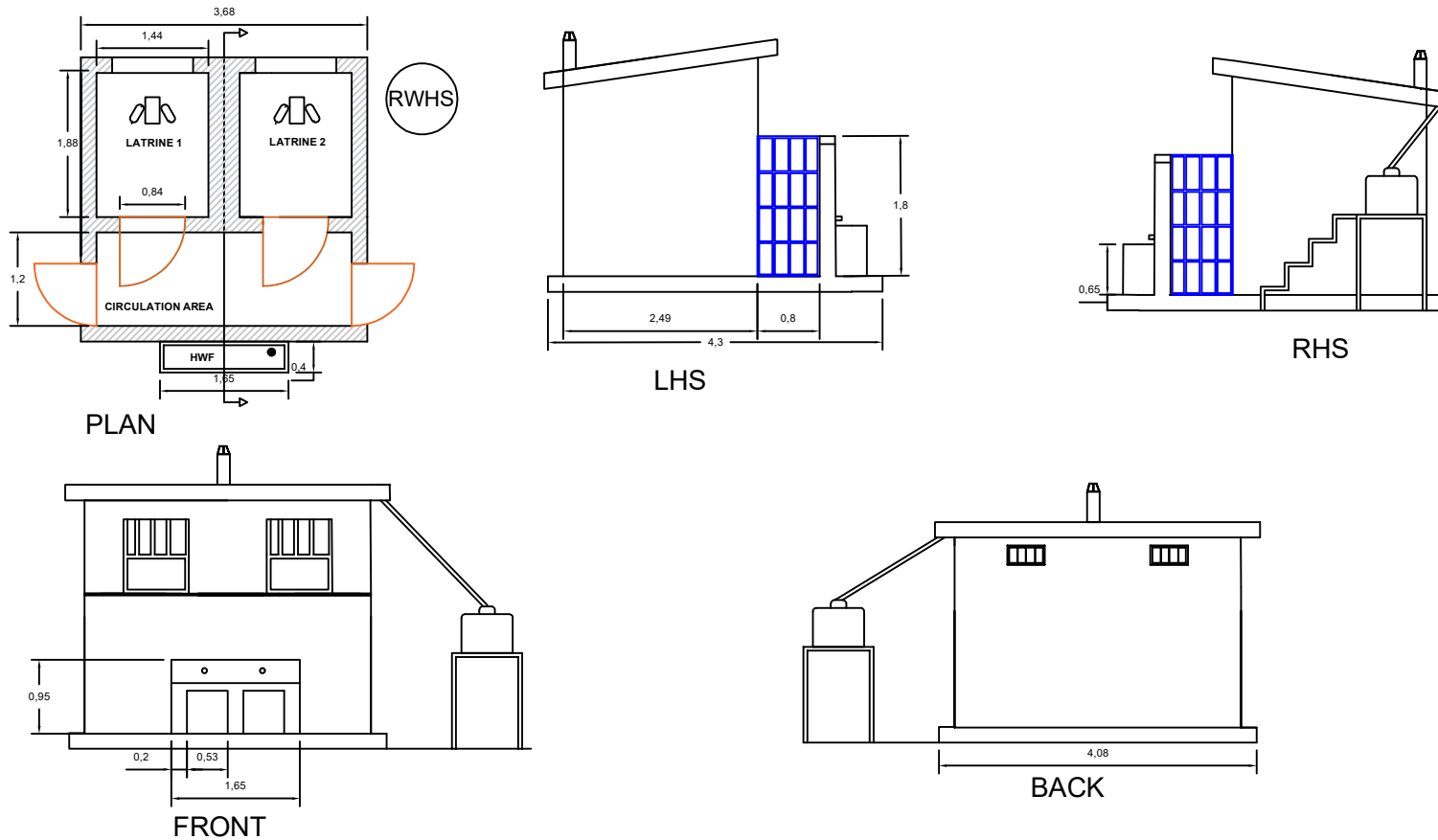
DESIGNED AND DRAFTED

Designed by:
(Eng) Olga Stella Opeli Wani
Email: OlgaStella.Opeli@Malteser-international.org
Date:

Approved by:

Sign:.....
Date:.....

REHABILITATION OF 2-STANCE PIT LATRINE IN ILLINGARI PRIMARY SCHOOL



NOTE

1. All dimensions are in meters unless stated
2. Iron sheet is G28 corrugated and light blue coated
3. All external walls are 200mm
4. Grill door, tank stank and stair case are sq. hollow section 40 X 40 mm

DRAWING SCALE
1:100

DONOR



IMPLEMENTER



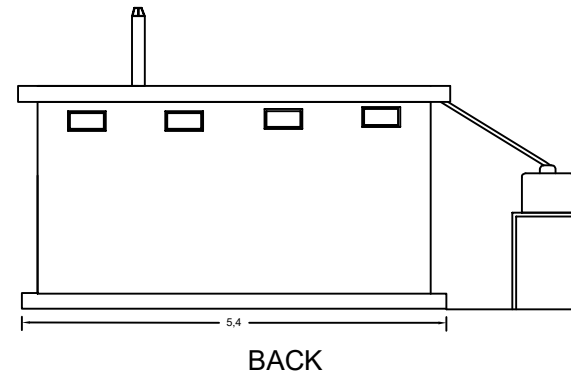
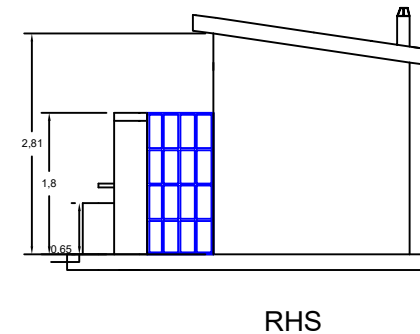
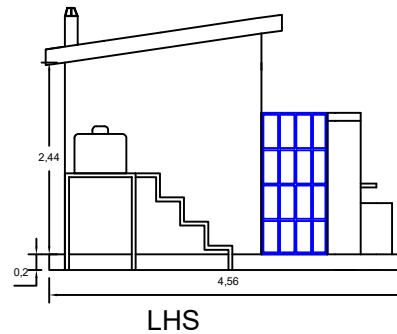
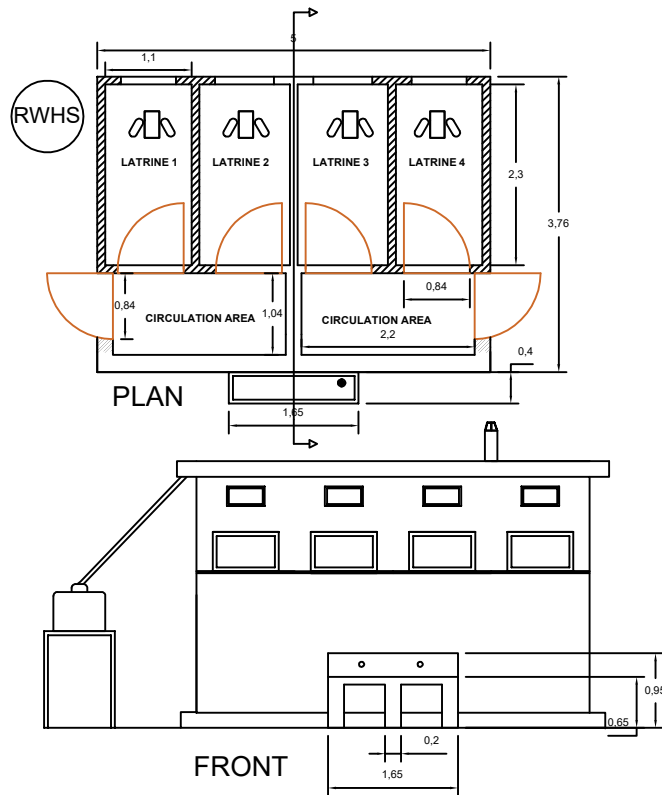
DESIGNED AND DRAFTED

Designed by:
(Eng) Olga Stella Opeli Wani
Email: OlgaStella.Opeli@Malteser-international.org
Date:

Approved by:

.....
Sign:.....
Date:.....

REHABILITATION OF 4-STANCE PIT LATRINE IN DON BOSCO PRIMARY SCHOOL



NOTE

1. All dimensions are in meters unless stated
2. Iron sheet is G28 corrugated and light blue coated
3. All external walls are 200mm
4. Grill door, tank stank and stair case are sq. hollow section 40 X 40 mm

DRAWING SCALE
1:100

DONOR



IMPLEMENTER



DESIGNED AND DRAFTED

Designed by:
(Eng) Olga Stella Opeli Wani
Email: OlgaStella.Opeli@Malteser-international.org
Date:

Approved by:

Sign:.....
Date:.....

