



**JOHANNITER**

# **Tender for Construction of 3 Latrine Blocks (including a bathroom and water harvest system for hand Washing) in Torit and Magwi county, Eastern Equatoria.**

**Procurement Number: TOI/EAF0102/0004**

**Closing Date: 25th May 2023**

## Table of Content

About Johanniter: .....	2
Proposed Timelines .....	2
Description of Works/Service .....	2
Clarification of Tender Documents. ....	2
Amendments of tender documents. ....	2
Conditions for Tender Submission. ....	3
Tenderers' Eligibility and Qualifications. ....	3
<b>Cost of tendering.</b> .....	3
Currencies. ....	3
Submission of the offer. ....	3
Tender Evaluation Process.....	3
Award Criteria. ....	4
Mandatory requirements. ....	4
Bidders Signature. ....	4
Annexes. ....	4



## About Johanniter:

Johanniter is a German Christian Not for profit non-governmental organisation running eight integrated projects in the former Western Bahr el Ghazal State (WBeG) of South Sudan focusing on maternal and essential health, nutrition (CMAM), WASH and GBV/Protection. Its overall objective is to reduce people's vulnerability, specifically by contributing to morbidity and mortality reduction by improving the population's health and nutrition status. Furthermore, improved access to water, sanitation and hygiene (WASH), and protection services are an existential part of Johanniter's South Sudan programme.

## Proposed Timelines

Notice for tender	12th May 2023
Dateline for submission	25th May 2023
Proposed tender opening dates	30th May 2023

## Description of Works/Service

Johanniter invites prospective vendors to submit bids for the **Construction of 3 Latrine Blocks (including a bathroom and water harvest system for hand Washing) in Torit and Magwi County for the Strengthening of the resilience of South Sudanese refugees, host communities, IDPs and returnees (BMZ-TA) Project** as described in the table below. Bids can be delivered to the **Johanniter office in Juba or Torit**, depending on the vendor's location.

No	Item Description	Unit Type	Quantity
Lot 1	Construction of 2 Latrine Blocks that include bathrooms and a water harvest system for hand Washing in Torit County (Bur and Nyong Payam): <b>Refer to Technical Design and BOQs attached</b>	Blocks	02
Lot 2	Construction of 1 Latrine Blocks that includes bathrooms and a water harvest system for hand Washing) in Magwi county (Nimule payam): <b>Refer to Technical Design and BOQs attached</b>	Blocks	01

***Note that all qualified potential vendors can bid for either one lot or both lots. Please clearly state on your bid the lot that you are bidding for.***

## Clarification of Tender Documents.

Johanniter has taken great care to be as straightforward as possible in the language used to compile this tender document. If any confusion arises from the meaning or interpretation of any words used in this document, Johanniter will not accept responsibility for any misunderstanding or misinterpretation.

Additional information or clarification can be obtained in writing by e-mail to

[richard.oryem@thejohanniter.org](mailto:richard.oryem@thejohanniter.org) or [Boniface.Lakony@thejohanniter.org](mailto:Boniface.Lakony@thejohanniter.org) with the subject line **"Tender - CLARIFICATION REQUEST - "Tender for Construction of 3 Latrine Blocks (including a bathroom and water harvest system for hand Washing) in Torit and Magwi county.**

". A response will be shared through email to any request received earlier than five days before the deadline for submission of applications.

## Amendments of tender documents.

At any time before the deadline for submission of the bids, Johanniter may, for any reason (s), whether at its initiative or in response to a clarification requested by a prospective applicant, notify the tender documents by issuing a subsequent addendum. Thus, the supplement shall be part of the tender documents and communicated in writing to all prospective bidders. Prospective bidders shall promptly acknowledge receipt of each addition in writing. To afford prospective applicants reasonable time to take an addendum into account in preparing their applications, the organisation may, at its discretion, extend the deadline for submitting bids.



# JOHANNITER

## **Conditions for Tender Submission.**

All interested vendors must respond to all requirements set out in this document, and failure to adhere to the conditions set out will result in the rejection of their bid.

- This tender process shall follow Johanniter's Procurement guidelines and policy and reserves the right to deal with any offer of its choice or any or all of the offers. Johanniter is not bound to accept the lowest bid or any suggestion.
- This invitation for tender is not a contract or an offer to an agreement but an invitation to negotiate.
- Respondents are bound by their offer for 90 days from the closing date of bids.
- Johanniter reserves the right to alter the dates of the timetable.
- Canvassing of Johanniter staff about this tender will result in the disqualification of that individual or company.
- Opening of offers is not open to the public, and Johanniter will inform each respondent of the results of the decision of their offer upon request.
- Bids submitted in another manner other than that specified in the tender document shall be rejected.
- Johanniter is not obliged to justify or explain selection to any respondent.
- All documentation must be submitted in English.
- All bids must be accompanied by a signed declaration of suppliers provided by Johanniter.
- This document does not represent a commitment to purchase or contract with your firm.

## **Tenderers' Eligibility and Qualifications.**

As part of its tender documents, the tenderer shall furnish its qualifications to perform the contract if its tender is accepted. The documentary evidence of the tenderer's qualifications to perform the contract if its tender is obtained and that the tenderer has the financial and technical capability necessary to perform the contract.

## **Cost of tendering.**

The tenderer shall bear all costs associated with the preparation and submission of the tender. Johanniter will not be responsible or liable for those costs, regardless of the conduct and outcome of the tendering process.

## **Currencies.**

All prices shall be quoted in USD.

## **Submission of the offer.**

Complete tender documents must be submitted in a sealed envelope marked "**Tender for Construction of 3 Latrine Blocks (including a bathroom and water harvest system for hand Washing) in Torit and Magwi county, Eastern Equatoria state**" to the following addresses below on/or before **25th May 2023, 4:00 PM local time to Johanniter Office in Juba located on Plot Number 55, Block 3-K, South Kololo, Pope Francis Road, Opposite American Embassy, Juba, South Sudan. Or Plot Number 711 & 712, 2nd Class, located in Hai Morwari, Torit South Sudan, or call +211 (0) 928 587 485** for directions. You shall be required to sign a document acknowledging the submission of your bid at the gate.

## **Tender Evaluation Process.**

A tender evaluation committee shall be set up per Johanniter's procurement guidelines/policy, considering all relevant donor requirements. The evaluation process shall include the following:

- Preliminary evaluation, where all bids shall be evaluated to determine whether they were submitted in line with the administrative instructions, including all mandatory requirements.



# JOHANNITER

- All bids that pass the preliminary evaluation shall proceed to the second evaluation phase based on the criteria listed below before a contract is awarded.
- Reference checks to validate the information provided shall be conducted before the award of the contract.

### **Award Criteria.**

When analysing the offers, Johanniter will take into consideration the following award criteria to achieve the best value for money:

- Price 40%.
- Delivery timelines (15%): Detailed Breakdown of the Work plan with clear timelines required.
- Past Performance (30%): Evidence of at least 3 Works Completion Certificates of similar Construction is Required.
- Staff Capacity (15%): Evidence of qualification and experience of Lead Engineer with at least a Minimum of 6 years' experience.

### **Mandatory requirements.**

- Quotation with prices for each item requested (If unable to quote for particular items, indicate that clearly.)
- Legal company registration documents showing the identity of the owner(s) of the company
- Tax registration Certificate clearly showing the company's TIN and Valid Tax Clearance.
- Six months of certified bank statements or Audited accounts for the previous year.
- List at least three professional references, including copies of any recommendations, contracts, purchase orders, etc. (References of work with other NGOs will be considered highly.)
- Signed declaration of suppliers and Tender Dossier.

### **Bidders Signature.**

I have read and understood this document, and all information provided as part of this tender by our/my company is an accurate representation.

Signed: \_\_\_\_\_ Date: \_\_\_\_\_

Name: \_\_\_\_\_ Position: \_\_\_\_\_

### **Annexes.**

- Declaration for Suppliers.
- Detained BOQs and Technical Design

## DECLARATION OF SUPPLIERS

We \_\_\_\_\_ [company name] \_\_\_\_\_ herewith declare that

- a) we do respect basic social rights and working conditions based on international labour standards and condemn the exploitation of child labour;
- b) we are not bankrupt or being wound up, are not having our affairs administered by the courts, have not entered into an arrangement with creditors, have not suspended business activities, are not the subject of proceedings concerning those matters, and are not in any analogous situation arising from a similar procedure provided for in national legislation or regulations;
- c) we have not been convicted of an offence concerning our professional conduct by a judgment which has the force of res judicata;
- d) we have not been guilty of grave professional misconduct;
- e) we have fulfilled all obligations relating to the payment of social security contributions or the payment of taxes in accordance with the legal provisions of the country in which we are established or with the Federal Republic of Germany or those of the country where the contract is to be performed;
- f) we have not been the subject of a judgment which has the force of res judicata for fraud, corruption, involvement in a criminal organisation or any other illegal activity detrimental to Johanniter's financial interests;
- g) following another procurement procedure carried out by Johanniter or another contracting authority, we have not been declared to be in serious breach of contract for failure to comply with our contractual obligations;
- h) we are not subject to a conflict of interest with regard to this tender. We declare that the price on the bid attached is a market competitive offer from my organization, and we are submitting to this procurement process without any conflict of interest, or the provision / receipt of any commission, gift, bribe, gratuity or remuneration of any kind.
- i) we are not guilty of misrepresentation in supplying the information required by Johanniter as a condition of participation in the contract procedure.
- j) we do not perform any act or omit to perform any act, including any misrepresentation, in order to knowingly mislead, or attempt to knowingly mislead JOHANNITER and/or any other party to obtain a financial or other benefit or to avoid any obligation ("Fraudulent Practice");
- k) we do not offer, give, receive or solicit, directly or indirectly, or attempt to offer, give, receive or solicit, directly or indirectly, anything of value to improperly influence the actions of JOHANNITER and/or any other party ("Corrupt Practice");
- l) we do not enter into any arrangements with any other party or parties that are designed to achieve an improper purpose, including but not limited to improperly influencing the actions of JOHANNITER and/or any other party or engaging in price fixing ("Collusive Practice", and together

- with “Fraudulent Practices and Corrupt Practices”, “Prohibited Practices”).
- m) we do not engage in transactions with, or provide resources or support to, individuals and organizations associated with terrorism, whether in cash or in kind, directly or indirectly.
  - n) we verify that no support or resources are provided to individuals or entities associated with terrorism as designated on the „Consolidated list of persons, groups and entities subject to EU financial sanctions” maintained by the European Commission or by any other similar sanction list of individuals and entities that may be established by the United Nations Security Council or the United States of America.
  - o) we do not engage in acts that directly support or advance trafficking in persons, including the following acts:
    - i destroying, concealing, confiscating, or otherwise denying an employee access to that employee’s identity or immigration documents;
    - ii. failing to provide return transportation or pay for return transportation costs to an employee from a country to the country from which the employee was recruited upon the end of employment if requested by the employee.
    - iii. soliciting a person for the purpose of employment, or offering employment, by means of materially false or fraudulent pretences, representations, or promises regarding that employment.
  - p) we do respect applicable law relating to anti-money laundering in the execution of our contracts.

**General statements:**

- 1.1 The contractor shall communicate these fundamentals of JOHANNITER’s Policy to its management, employees, subcontractors and agents and shall take all reasonable measures to ensure that such persons do not engage in prohibited practices.
- 1.2 The contractor shall immediately disclose to JOHANNITER any actual, apparent, potential or attempted prohibited practice that the contractor becomes aware of. To that end, the contractor shall fully cooperate, and shall take all reasonable steps to ensure that its management, employees, subcontractors and agents fully cooperate with any investigation of prohibited practices by JOHANNITER, including by complying with all reasonable requests from JOHANNITER to gain access to and inspect any records, documents and other relevant information.
- 1.3 JOHANNITER is committed to the protection of vulnerable populations in humanitarian crisis, including from sexual exploitation and abuse. By entering into a contract with JOHANNITER, The contractor undertakes to ensure that

its personnel, agents and subcontractors conform to the highest standards of moral and ethical conduct.

The contractor expressly acknowledges and agrees that:

- a) Any breach of this policy by the contractor or by any of its management, employees, subcontractors or agents constitutes a material breach of the contracts, which entitles JOHANNITER to immediately terminate a contract without incurring any liability to the contractor; and
- b) In the event that JOHANNITER were to determine through an investigation or otherwise that a prohibited practice occurred, JOHANNITER shall have, in addition to its right to immediately terminate the contract, the rights to:
  - i. apply and enforce the relevant sanctions in accordance with its internal regulations, rules, procedures, practices, policies and guidelines, including referral of the matter to national authorities when appropriate; and
  - ii. recover all losses, financial or otherwise, suffered by JOHANNITER in connection with such prohibited practices.

\_\_\_\_\_  
Date & Signature

\_\_\_\_\_  
Name of company

\_\_\_\_\_  
Name in printed letters

Stamp

JOHANNITA SOUTH SUDAN

THE BILL OF QUANTITY FOR THE CONSTRUCTION OF 4 STANCE LATRINE WITH BATHROOM AND WATER HARVEST SYSTEM FOR HANDWASHING ATTACHED IN IKWOTOS

**BILL-01**

S/N	Description	Unit	Total QTY for 1 Unit	Unit Cost (\$)	Cost for 1 unit (\$)	Total QTY for 2 units (\$)
<b>1.0</b>	<b>Preliminaries</b>					
1.1	Mobilization and Transportation of resources, materials, equipment, personnel and demobilization of equipment, plant, materials and labor force and decommissioning.	Item	1			
1.2	Site preparation including site clearance of un wanted objects and levelling, and setting up the building according to architectural design.	Item	1			
1.3	Organize and provide temporary site store facility, shade and remove at practical completion.	Item	1			
	<b>Sub total (1) carried to summery</b>					
<b>2.0</b>	<b>A) Substructure( all provisional)</b>					
2.1	Maintaining and up holding excavation sides against collapse and keep excavation free from any surface water run-off.	Item	1			
2.2	Excavate pit (6.5mx2.10mx1.20m) starting at existing ground level, not exceeding 1.20 m deep. Ensure pits are well protected against collapse and any water entering into the pit	M <sup>3</sup>	16.38			
2.3	Ditto ditto but 6.50m x 2.10mx3.8m deep, ensure pits are well protected against collapse	M <sup>3</sup>	51.87			
2.4	Return, fill in and ram selected excavated materials around wall lining	M <sup>2</sup>	15.55			
2.5	Wheel, load cart away surplus excavated materials from site and safely disposed of in low lands nearby.	M <sup>3</sup>	52.70			



*Verifed*



	<b>Reinforced concrete ( 1:3:4)</b>					
2.6	1:3:4 x 0.10m thick concrete in base of pit reinforced with Y-12 at 20 cm spacing.	M <sup>3</sup>	0.84			
	<b>Class 20(1:2:4) vibrated reinforced concrete</b>					
2.7	150mm suspended floor slab, reinforced with Y-12 round iron bar@15 cm spacing.	M <sup>3</sup>	1.05			
2.8	Reinforced columns inserted in pit lining(6N0 - 0.20mx0.20m)	M <sup>3</sup>	1.88			
2.9	Great beam mid-way the pit lining (0.25mx0.20m) reinforced to Y-12 , 4 ways.	M <sup>3</sup>	0.652			
2.10	Ring beam on wall	M <sup>3</sup>	0.756			
2.11	1.30mx1.20mx0.10m concrete access ramp, corridor and urinal floor, top ribbed. (Class 15(1:3:4) plain mass concrete.	M <sup>3</sup>	2.0			
	<b>Reinforcement bars including binding wires</b>					
2.12	Y-12mm mild steel bars at the basement slab	Meters	120			
2.13	Y-12mm mild steel bars at the columns in pit lining	Meters	156			
2.14	Y-12mm mild steel bars at suspended floor slab	Meters	108			
2.15	Y-12mm mild steel bars at great beam	Meters	72			
2.16	Y-8mm in stirrups for all reinforcement works	Meters	186			
2.17	Binding wire	Kgs	4.0			
	<b>Sawn timber form work</b>					
2.18	Sides of suspended floor slab 1"x8" sawn timber	Meters	16			
2.19	Soffits of suspended slab 1"x8"	Meters	44			
2.20	Sides of great beam 1"x8" sawn timber	Meters	16			
2.21	Sides of columns 1"x10" sawn timber	Meters	48			
2.22	Nails assorted	Kgs	5.0			
	<b>Pit lining wall</b>					
2.23	200mm solid blocks or well burnt red bricks in pit lining, bedded, jointed in 1:3 cement to sand mortar	M <sup>2</sup>	82			



*Vejoel*

*[Signature]*

2.24	Pit wall finishes – 1:4 cement to sand, 12mm thick internal rendered and finished smooth in cement grout	M <sup>2</sup>	88			
	<b>Sub-total (2) carried to summary</b>					
3.0	<b>(B) Superstructure</b>					
3.1	20mm solid block/ well burnt bricks in walls, including the urinal chambers and curtain wall in 1:4 mortar well bonded.	M <sup>2</sup>	94			
3.2	200mm damp proof membrane laid on 200 mm levelled screed.	M	24			
3.3	Wall finishes- 1:4 cement to sand, 12mm thick internal and external rendered and well finished.	M <sup>2</sup>	167			
3.4	15 mm thick mortar screed on floors, corridor and urinal chambers well troweled and smooth finished, ditto but around squatting holes.	M <sup>2</sup>	23			
	<b>Reinforced concrete work: class 20 ( 1:2:4) vibrated concrete</b>					
3.5	Reinforced ring beam 20cmx20cm reinforced with Y 12mm	M <sup>3</sup>	0.5			
3.6	8mm mild steel bars in stirrups @150mm spacing	M	84			
3.7	12mm mild steel bars @ 4 ways	M	96			
3.8	1"x 8" Sawn timber, sides of beam.	M	20			

3.9	Binding wires	kgs	1			
	<b>Sub-total (3) carried to summary</b>					
4.0	<b>(C) Roof construction</b>					
	<b>Treated sawn soft wood</b>					
4.1	2"x4"x4m wall plate	M	16			
4.2	2"x4" rafters	M	24			
4.3	2"x3" purlin	M	24			
4.4	½ "wroth soft wood Fascia barge.	M	36			
4.5	28 gauge IT4 roof covering, pin nails, roofing nails on timbers, rubber washers and ridge caps included.	M <sup>2</sup>	28			
4.6	Hoop iron	Roll	1			



*Verifed*



4.7	Wood preservative	LITRES	2			
	<b>Pit latrine ventilation pipe</b>					
4.8	4" diam. PVC vent pipe, fixing brackets included	No.	3			
4.9	Ditto extra plain bend, dome grated cap fixed at top of latrine sump vent pipe.	No.	6			
	<b>Pit latrine fittings: Doors and windows</b>					
	<b>Doors:</b>					
4.10	Door frame- 50mmx100mmx3mm rectangular hollow section door frame complete with 6No lugs or wall cramp, 15cm long fish tailed; welded, primed with red before fixing. Door size 0.90x 2.00m Door shutter- 0.90mx 2.00m steel door shutter divided into three panels constructed from 50mmx40mmx2.0 mm hollow section steel frame all around and two dividers, panel voids filled with 2mm steel plate equal trough neatly shaped at edges including 3 No. 10 cm long heavy duty steel hinges, 2 No 12mm diameter bolt locking system, all welded together and primed with red oxide before fixing. Painting on doors-Prepare touch primer and apply two coats of gloss enamel oil paint on general surfaces of doors internally and externally.	No.	5			
	<b>Windows:</b>					
4.11	500mmx400mm mild steel ventilator constructed from 80mmx50mmx2.5mm mild steel rectangular hollow section as frames with fixed welded wire mesh, coffee tray mesh and mosquito gauze as insect screen. Prepare, prime and apply two coats of gloss enamel oil paint on general surfaces of windows both external and internal.	No.	5			
	<b>Sub-total (4) carried to summery</b>					



*Verfeert*

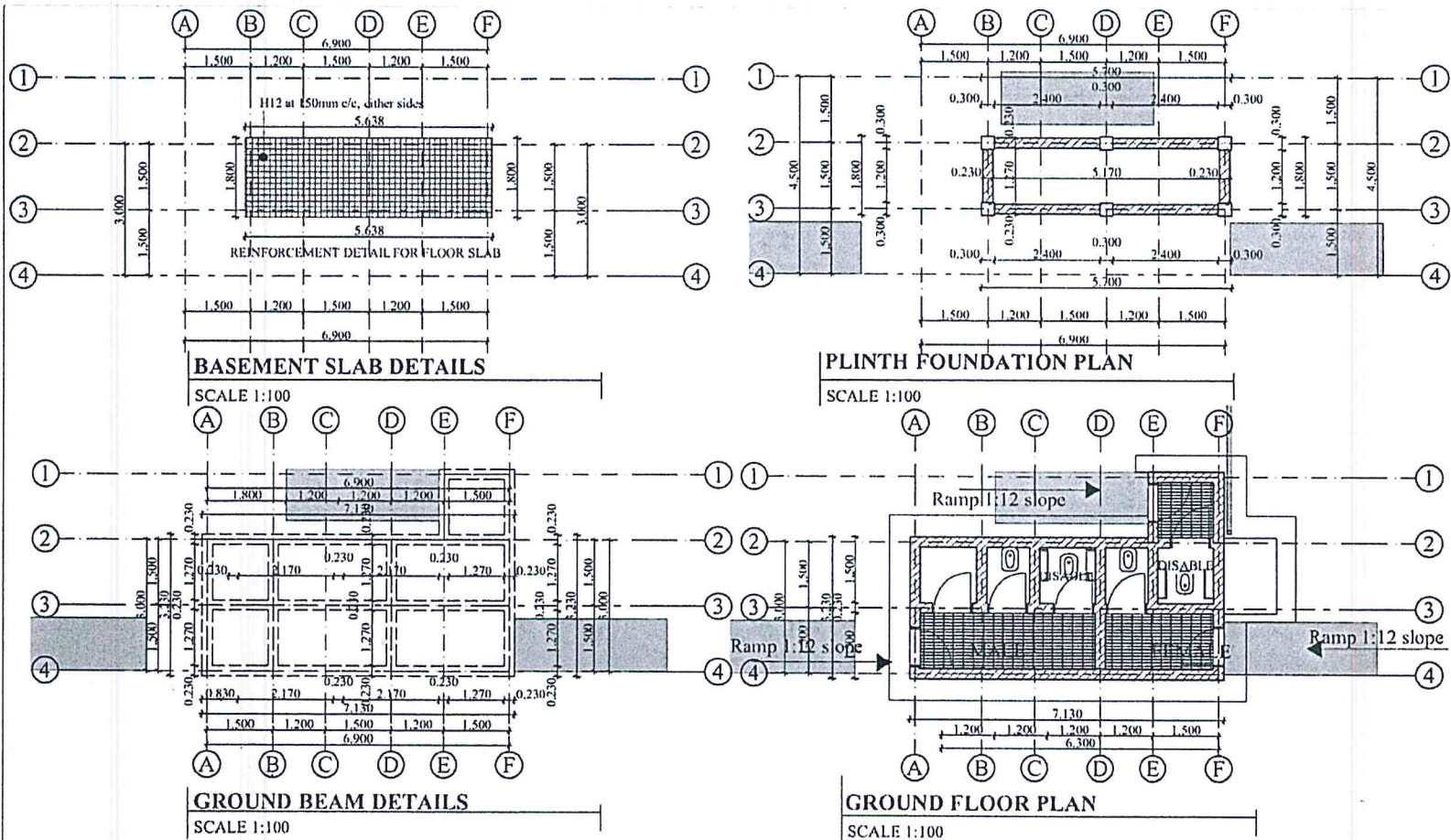
9/3/2023.

<b>5.0</b>	<b>Surface finishes</b>					
5.1	Allow for domed coping on top of curtain walls and urinal chamber walls.	M <sup>2</sup>	23.2			
	<b>Painting and decorations</b>					
5.2	Prepare and apply one under coat and two finishing coats of emulsion paint on the plastered surfaces internally.	M <sup>2</sup>	50			
5.3	20mmx100mm skirting		1.2			
5.4	Prepare and apply one under coat and two finishing coats of emulsion paint on the plastered surfaces externally.	M <sup>2</sup>	117			
5.5	Prepare and apply two finishing coats of white emulsion paint on fascia boards and on top of curtain and urinal chamber walls.	M <sup>2</sup>	60			
5.6	Provide and allow for fabrication and fixing of a metallic sign post 1.20m length x 0.80m height on a metal from fabricated from 40mmx40mm hollow section pipes. Wordings is provided there in.	No.	1			
5.7	Provide and allow for fixing a hand washing facilities- a 40 liters plastic tank with ¾" tape fitted on, properly mounted on a metallic stand with a provision for soap holding and a soakage pit 1.00m diamterx1.50m deep, filled with approved filling materials and well covered.	No.	2			
	<b>GRAND TOTAL (\$)</b>					



*Verjuel*  
*[Signature]*  
 9/3/2023

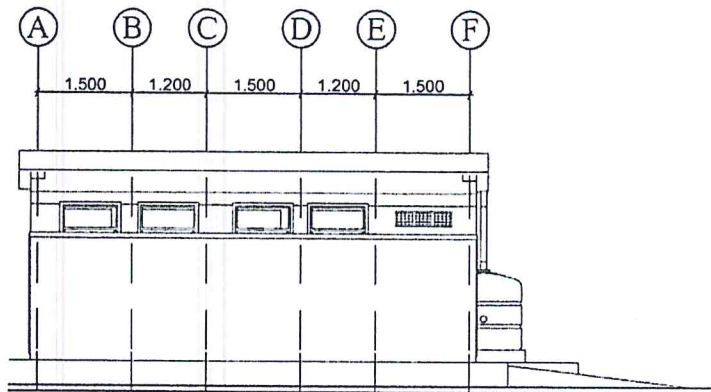




<b>PROJECT:</b> PROPOSED FOUR (04) STANCES DRAINABLE LATRINE AND A SHOWER TO BE BUILT ON PLOT .....BLOCK .....IKWOTOS, EASTERN EQUATORIA STATE	<b>CLIENT:</b> JOHANNITER INTERNATIONAL P.O.Box ..... TEL: +2119..... Email:	<b>DRAWING TITLE:</b> WORKING DRAWINGS	<b>NOTES:</b> All dimensions are in millimeters unless indicated otherwise	
			SCALE: 1:100, 1:75	DATE: Feb/2023

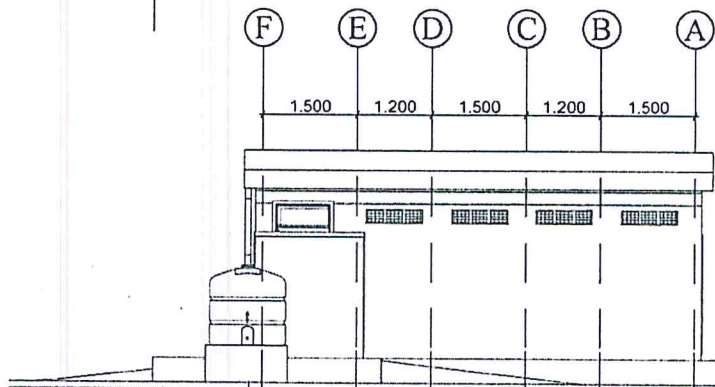


*Ver-jed*  
*[Signature]*



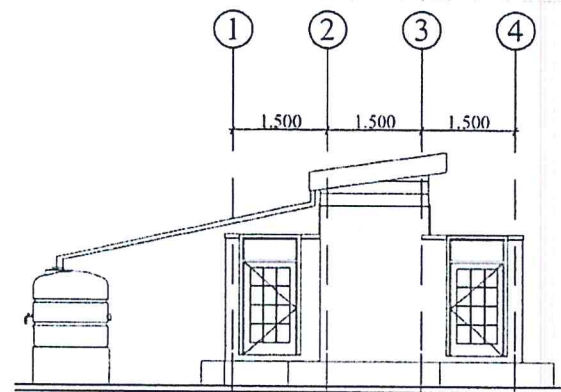
**FRONT ELEVATION**

SCALE 1:100



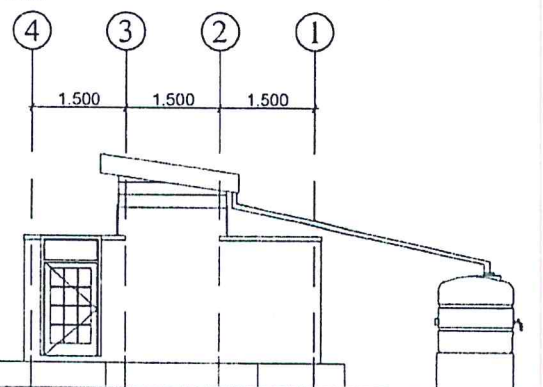
**REAR ELEVATION**

SCALE 1:100



**LEFT SIDE ELEVATION**

SCALE 1:100



**RIGHT SIDE ELEVATION**

SCALE 1:100

**PROJECT:**

PROPOSED FOUR (04) STANCES DRAINABLE  
LATRINE AND A SHOWER TO BE BUILT ON PLOT  
.....BLOCK  
.....IKWOTOS, EASTERN EQUATORIA  
STATE

**CLIENT:**

JOHANNITER INTERNATIONAL  
P.O.Box .....  
TEL: +2119.....  
Email: .....

**DRAWING TITLE:**

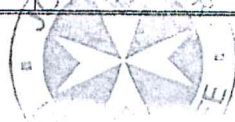
WORKING DRAWINGS

**NOTES:**

All dimensions are in millimeters unless indicated  
otherwise

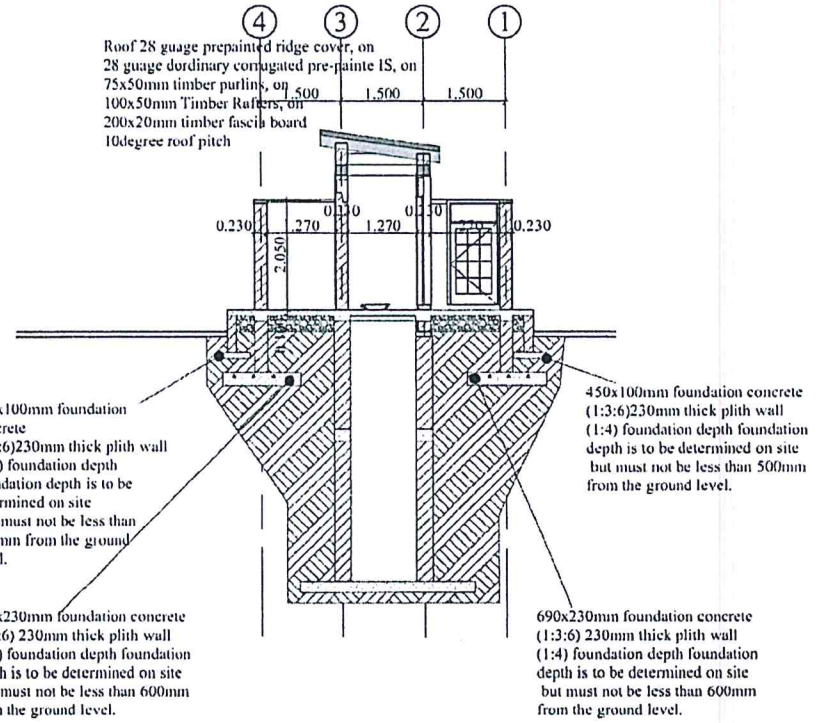
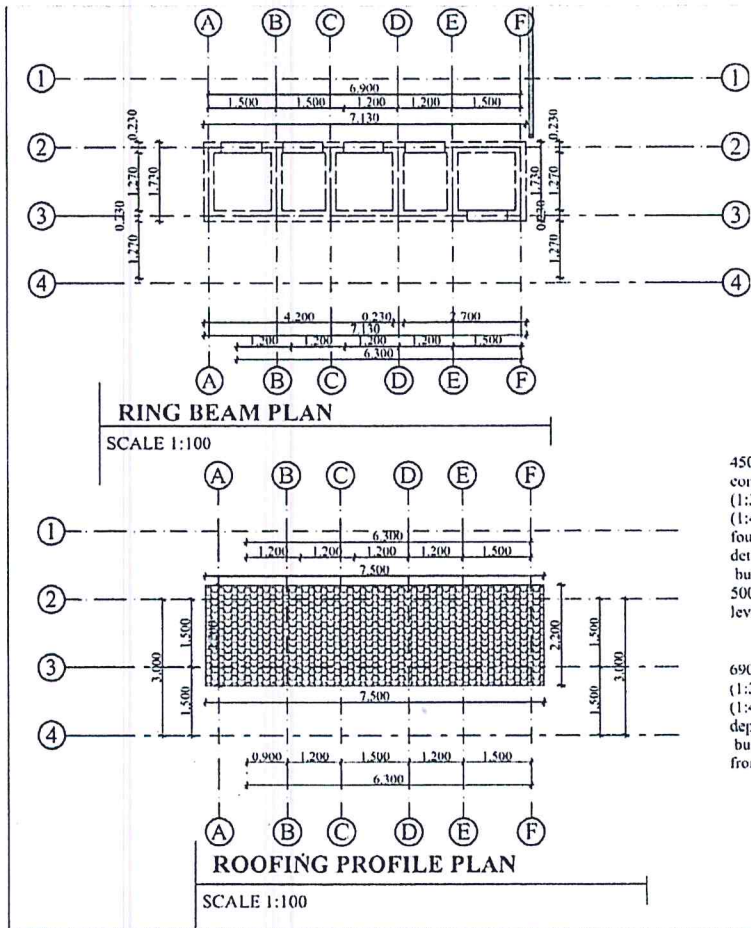
SCALE: 1:100, 1:75

DATE: Feb/2023



*Verjed*  
*[Signature]*  
9/3/2023



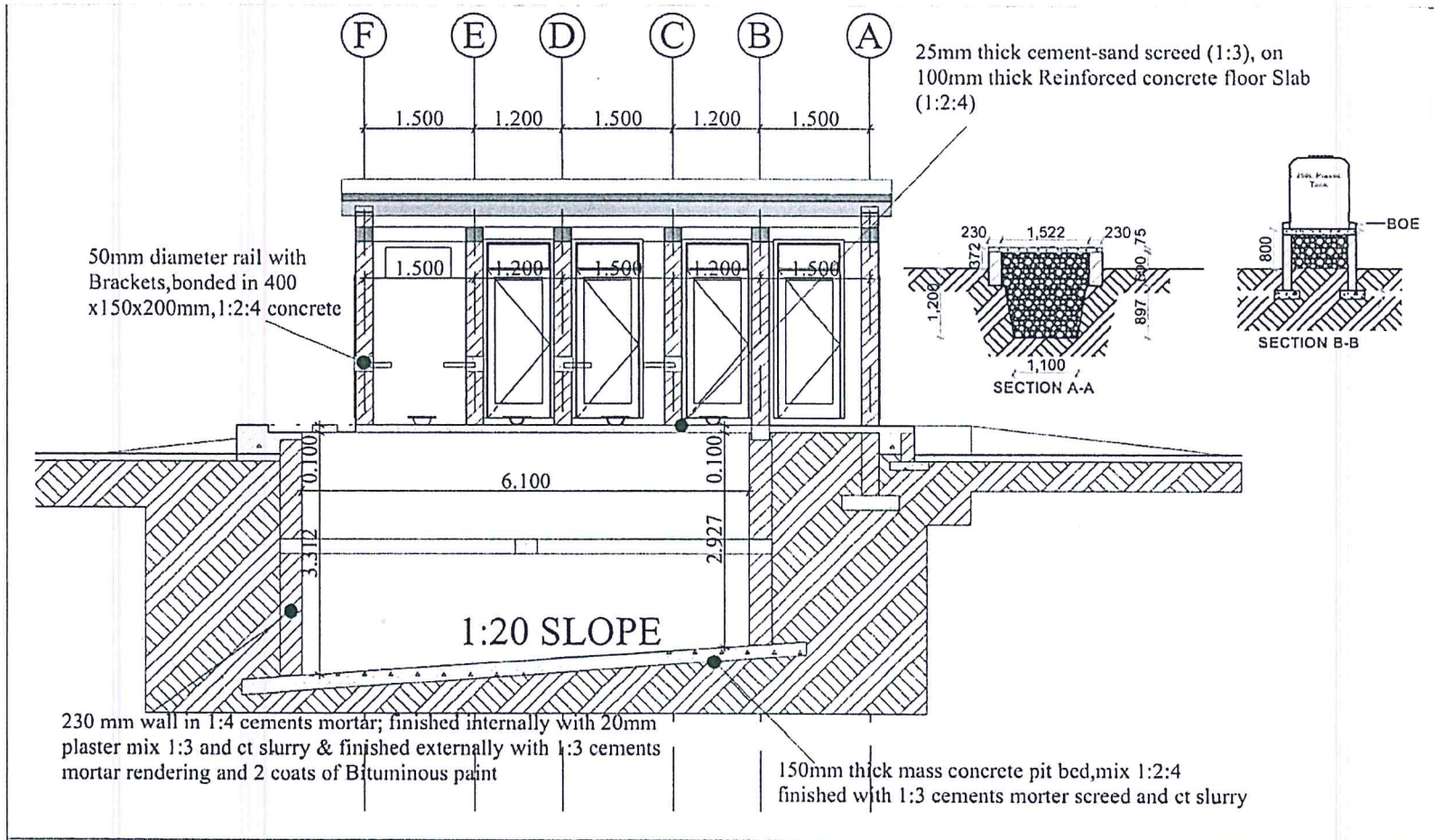


**CROSS SECTIONAL VIEW X-X**  
SCALE 1:100

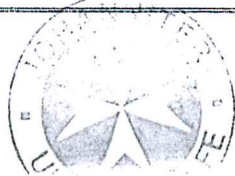
<b>PROJECT:</b> PROPOSED FOUR (04) STANCES DRAINABLE LATRINE AND A SHOWER TO BE BUILT ON PLOT .....BLOCK .....IKWOTOS, EASTERN EQUATORIA STATE	<b>CLIENT:</b> JOHANNITER INTERNATIONAL P.O.Box ..... TEL: +2119..... Email:	<b>DRAWING TITLE:</b> WORKING DRAWINGS	<b>NOTES:</b> All dimensions are in millimeters unless indicated otherwise	
			SCALE: 1:100, 1:75	DATE: Feb/2023



*Verjod*

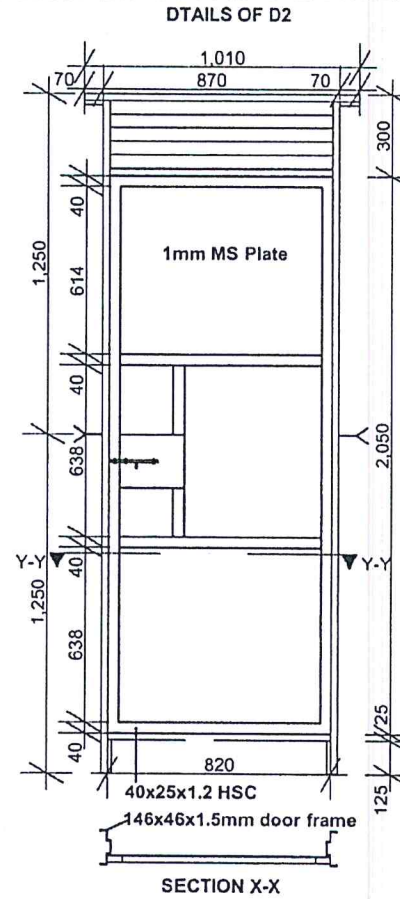
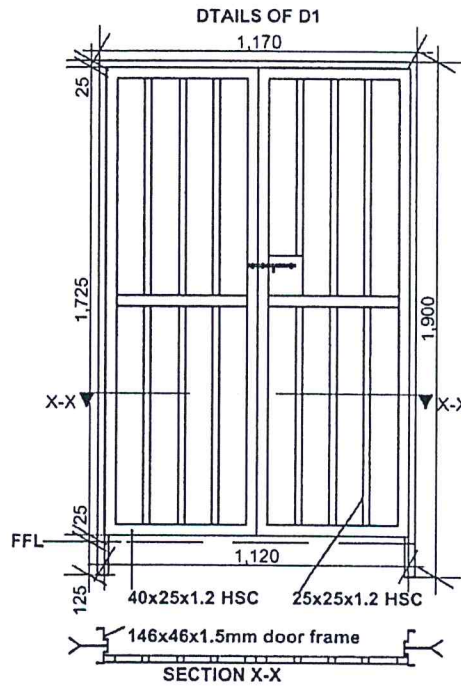
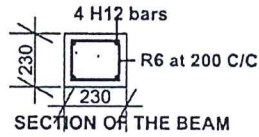
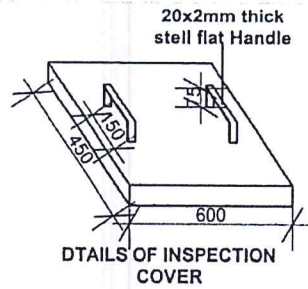


<b>PROJECT:</b> PROPOSED FOUR (04) STANCES DRAINABLE LATRINE AND A SHOWER TO BE BUILT ON PLOT .....BLOCK .....IKWOTOS, EASTERN EQUATORIA STATE	<b>CLIENT:</b> JOHANNITER INTERNATIONAL P.O.Box ..... TEL: +2119..... Email:	<b>DRAWING TITLE:</b> WORKING DRAWINGS	<b>NOTES:</b> All dimensions are in millimeters unless indicated otherwise	
			SCALE: 1:100, 1:75	DATE: Feb/2023



*Verjod*





**PROJECT:**  
 PROPOSED FOUR (04) STANCES DRAINABLE  
 LATRINE AND A SHOWER TO BE BUILT ON PLOT  
 .....BLOCK  
 .....IKWOTOS, EASTERN EQUATORIA  
 STATE

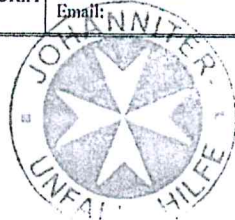
**CLIENT:**  
 JOHANNITER INTERNATIONAL  
 P.O.Box .....  
 TEL: +2119.....  
 Email: .....

**DRAWING TITLE:**  
 WORKING DRAWINGS

**NOTES:**  
 All dimensions are in millimeters unless indicated  
 otherwise

SCALE: 1:100, 1:75

DATE: Feb/2023



*Verfied*  
 [Signature]  
 15/2/23