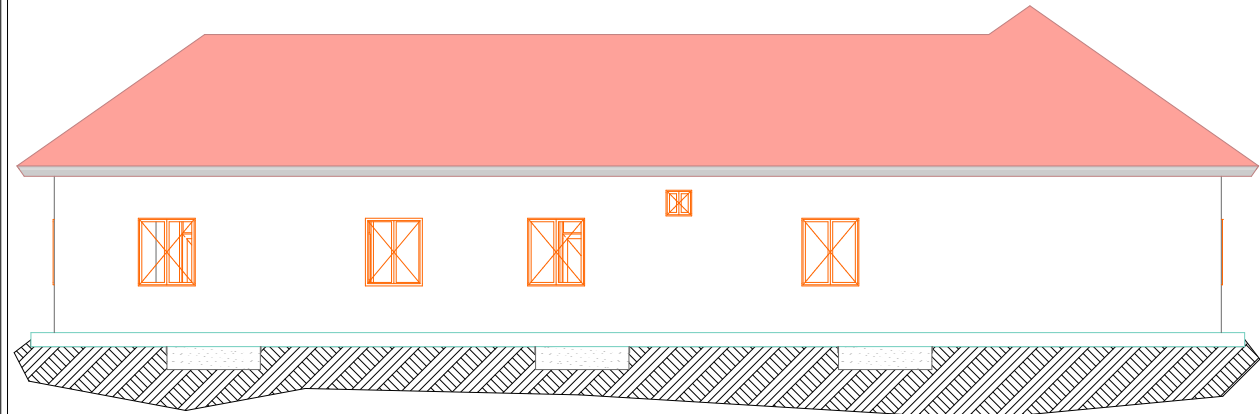
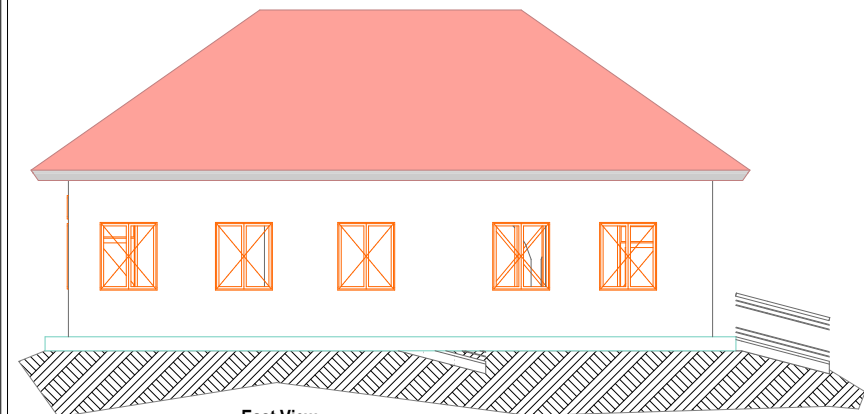


Front View



Back View



East View

Exterior ,Interior Wall and Floor Details

Exterior wall:
 - Apply 20 mm thick cement sand (seived)1:3 plaster finished
 - Apply 1 coat of budget emulsion paint and 2 costs of weather guard painted(color will be advised)

Interior Wall:
 - Apply 20 mm thick cement sand (seived)1:3 plaster finished
 - Apply 20mm cement sand (1:4) mortar, lime putty (1:10 finished) with
 1coat of budget emulsion paint,
 2 finishing coats of silk vinyl emulsion paint (color will be advised)
 2 coats 150mm high skirting of approved oil paint

Doors schedule

No.	Desc-	Qty	Size
D1	Metal	6	2400 X 900
D2	Metal	1	2400 X 1230

Windows schedules

W1	Metal with glasses	12	1450 X 1220
W2		1	550 X 550
W3		1	1450 X 650

Note

PROJECT TITLE

Proposed Rehabilitation of Loperate PHCC and construction of its WASH Facilities in Yei River County

FUNDED BY AA



german humanitarian assistance
 DEUTSCHE HUMANITÄRE HILFE

Implemented by: Malteser International



Malteser International
 Order of Malta Worldwide Relief