

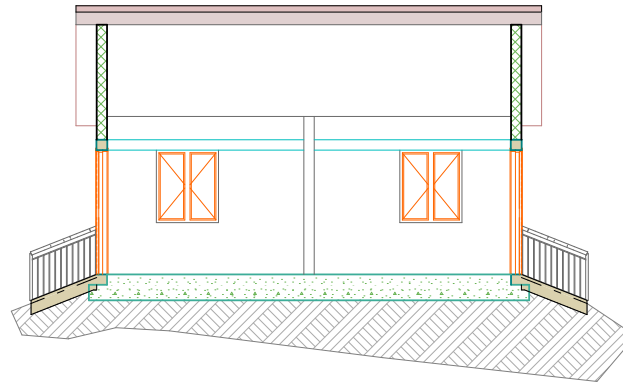
Roofing and Ceiling details

Roofing:

- Roof pitch at 35 degree
- G 29 prepainted ecotile roof covering sheets complete with all matching accessories, i.e rubber washer.....
- 32 mm ridge board, on
- 2x4 structural timber purlins, on
- 2x6 structural timber rafter, tie beam, wall plate, on
- 1x9 timber fascia board

Ceiling:

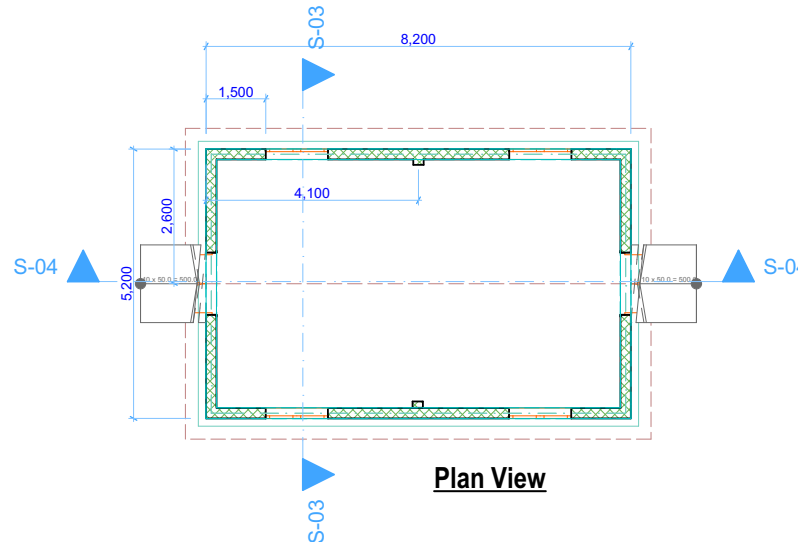
- Use Decorated suspended ceiling with all it requirement



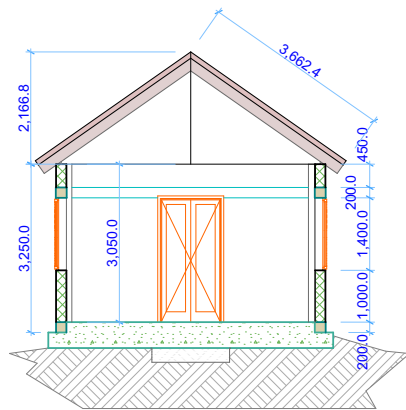
**Section -04**

**Wards**

1. Suspended Cases
- 2.. Confirmed Cases



**Plan View**



**Section 03**

Exterior, Interior Wall and Floor Details

Exterior wall:

- Use 6Y12 as tension and compression where Y12@150c/c as stirrups and concrete at M20
- 200 mm thick of well burnt red bricks bedded in cement sand mortar @ 1:3 reinforced with hoop iron every after 60mm
- Apply 20 mm thick cement sand (seived) 1:3 plaster finished and rough skired plastering (will be directed)
- Apply 1 coat of budget emulsion paint and 2 coats of weather guard painted(color will be advised)

Interior Wall:

- Apply 20 mm thick cement sand (seived) 1:3 plaster finished
- Apply 20mm cement sand (1:4) mortar, lime putty (1:10 finished) with
- 1coat of budget emusion ,paint 2 finishing coats of silk vinyl emusion paint (color will be advised)
- 2 coats 150mm high skirting of approved oil paint

Floor Details

- Use tile 400x400m at the cement sand motar of 1:3 rooms, varanda and corridors
- Screed all the aprone in cement metallic

**NOTES**

1. All dimensions are in MM unless or otherwise specified.
2. Use figured dimension only. Donot scale off the drawing
3. use hoop iron to reinforce the wall at the intervals of 400mm at every alternate course
4. Water meter level should be @mini 300mm above the ground level
5. The architect shall not accept any liabilities for works which has not be expressly instructed in writing to suprise or for any any omission or deviations from this drawing (s) nor shall take rrsponsibility for works handed by nominated contractor

**Double Shutter Doors schedule**

No.	Desc-	Qty	Size
D1	Stainless Steel door	2	2400 X 1200

**sliding Windows schedules**

W	Metal with glasses	4	1400 X 1200
---	--------------------	---	-------------

**PROJECT TITLE**

Proposed Upgrading of Isolation Unit for Yei River County

FUNDED BY AA



german humanitarian assistance

DEUTSCHE HUMANITÄRE HILFE

Implemented by: Malteser International



Malteser International  
Order of Malta Worldwide Relief