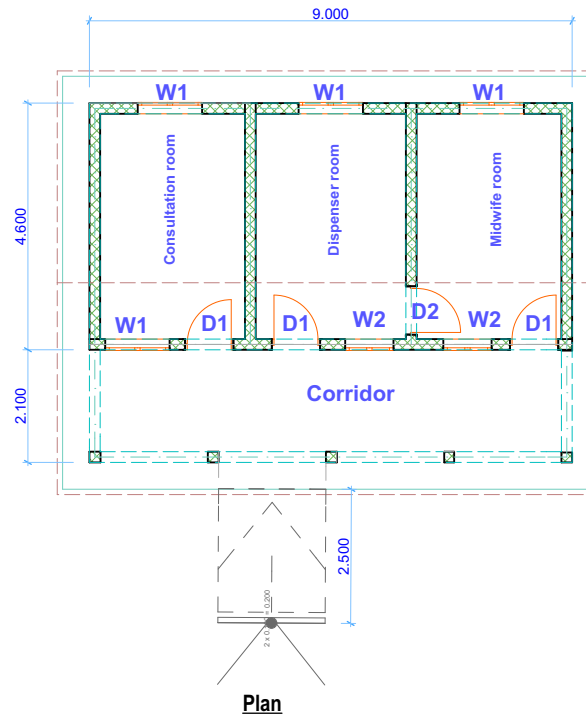
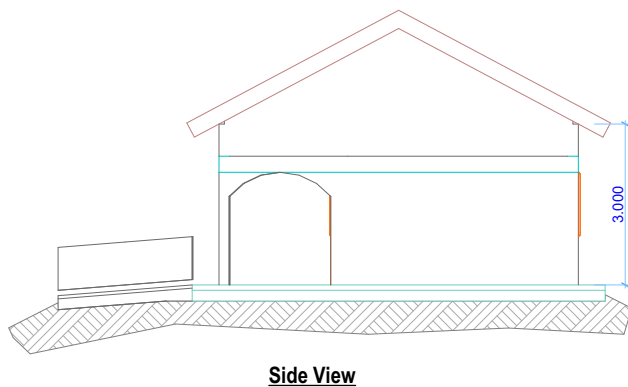
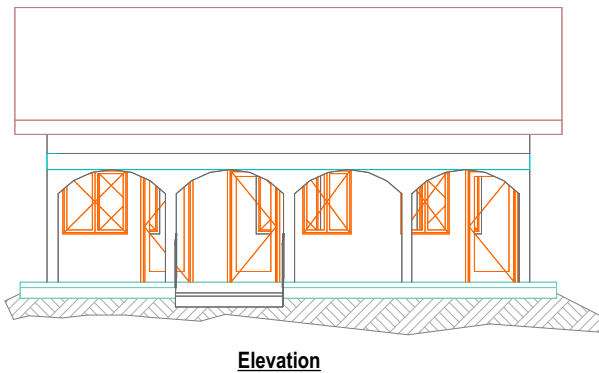
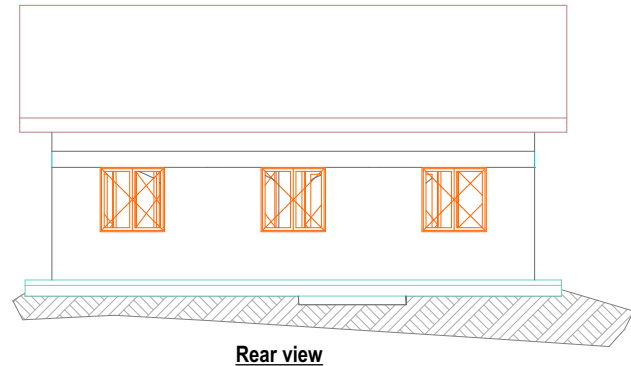


## Rehabilitation of Gimunu PHCU and latrine block in Yei County



### Exterior ,Interior Wall and Floor Details

#### Exterior wall:

- Apply 20 mm thick cement sand (seived) 1:3 plaster finished
- Apply 1 coat of budget emulsion paint and 2 coats of weather guard painted(color will be advised)

#### Interior Wall:

- Apply 20 mm thick cement sand (seived) 1:3 plaster finished
- Apply 20mm cement sand (1:4) mortar, lime putty (1:10 finished) with
- 1coat of budget emulsion paint,
- 2 finishing coats of silk vinyl emulsion paint (color will be advised)
- 2 coats 150mm high skirting of approved oil paint

### Doors schedule

| No. | Desc-  | Qty      | Size       |
|-----|--------|----------|------------|
| D1  | Metal  | <b>3</b> | 2200 X 900 |
| D2  | Wooden | <b>1</b> | 2200 X 900 |

### Windows schedules

|    |                    |          |             |
|----|--------------------|----------|-------------|
| W1 | Metal with glasses | <b>4</b> | 1200 X 1200 |
| W2 |                    | <b>2</b> | 1200 X 90   |

#### Note

1. Ensure D1 and D2 are properly opening and closing, repainted/ Vanished and installed a new locks
2. Ensure all the Window are opening and closing, cleaned painted and broken glasses are replaced
3. Remove the existing suspended wooden ceiling board and replace with concealed grid ceiling

### PROJECT TITLE

Proposed Rehabilitation of  
Gimunu PHCU and latrine block  
in Yei County

FUNDED BY AA



Implemented by: Malteser International



In collaboration with Central  
Equatoria State Ministry of Health.