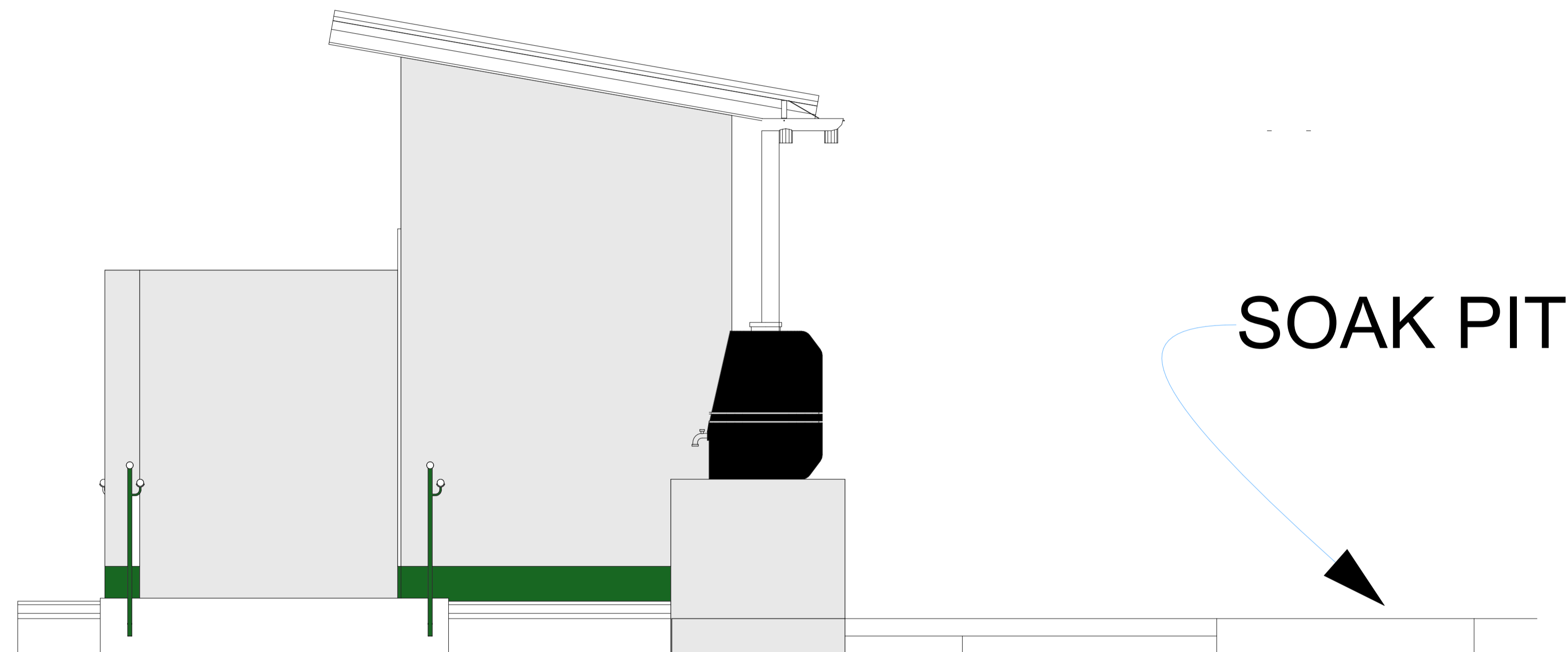


**SIDE ELEVATION
2**



**SIDE ELEVATION
1**

PROJECT: CONSTRUCTION OF 4 STANCE LATRINE WITH ONE GIRLS/WOMEN CHANGE ROOM

IMPLEMENTED BY. ACROSS SOUTH SUDAN FUNDED BY.

LOCATION : GOROM JUBA

DRAWING SCALE 1: 1M