

IMPROVING ACCESS AND QUALITY OF BASIC EDUCATION IN SOUTH SUDAN

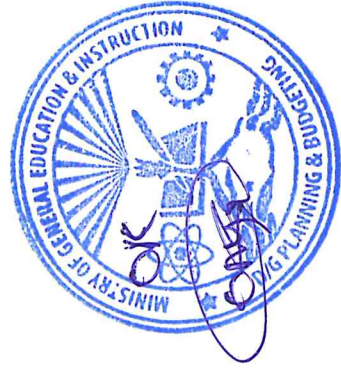


UNICEF

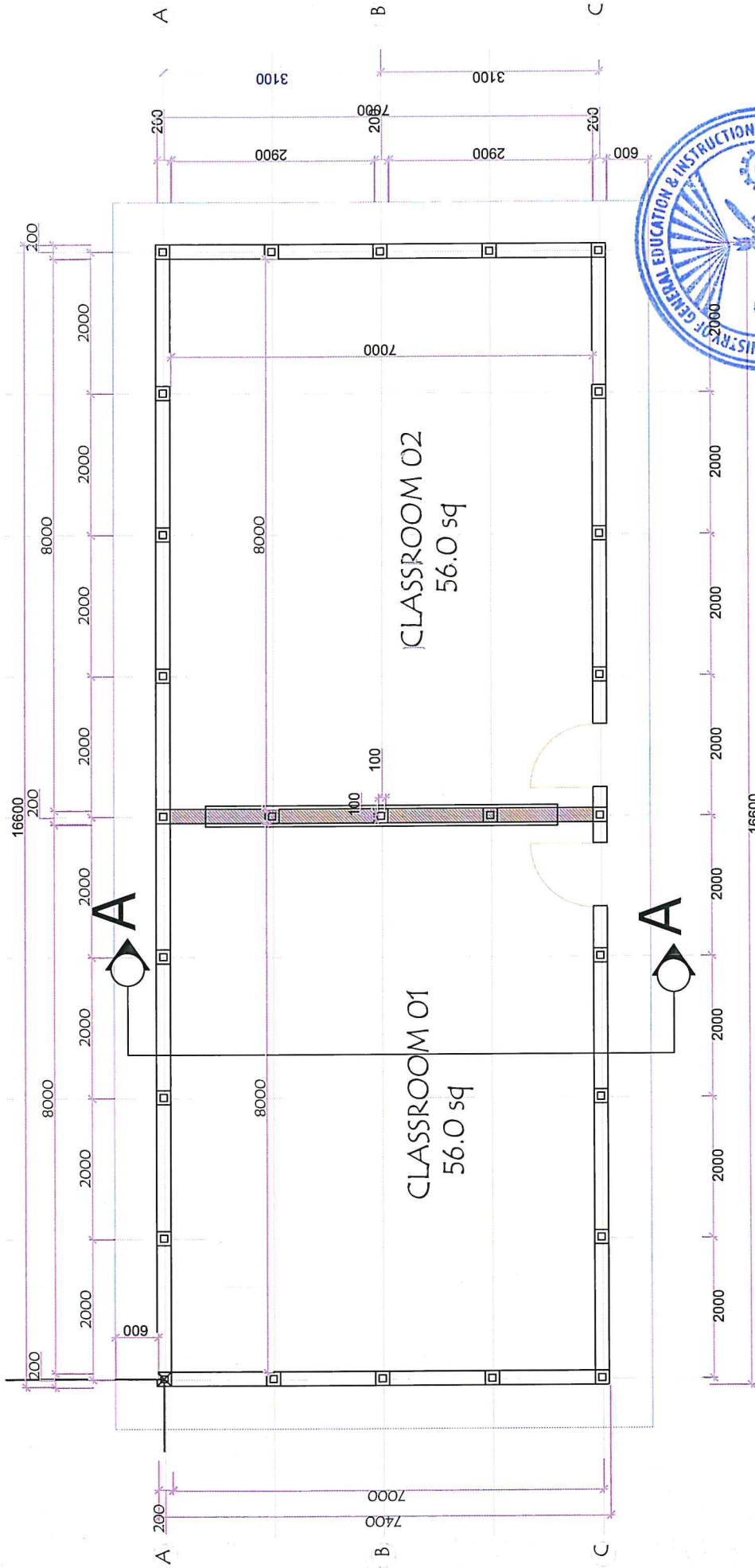


MINISTRY OF GENERAL
EDUCATION AND INSTRUCTION


PROPOSED IMPROVED TEMPORARY LEARNING SPACE (TLS), TWO CLASSROOM'S BLOCK FOR PRIMARY SCHOOL

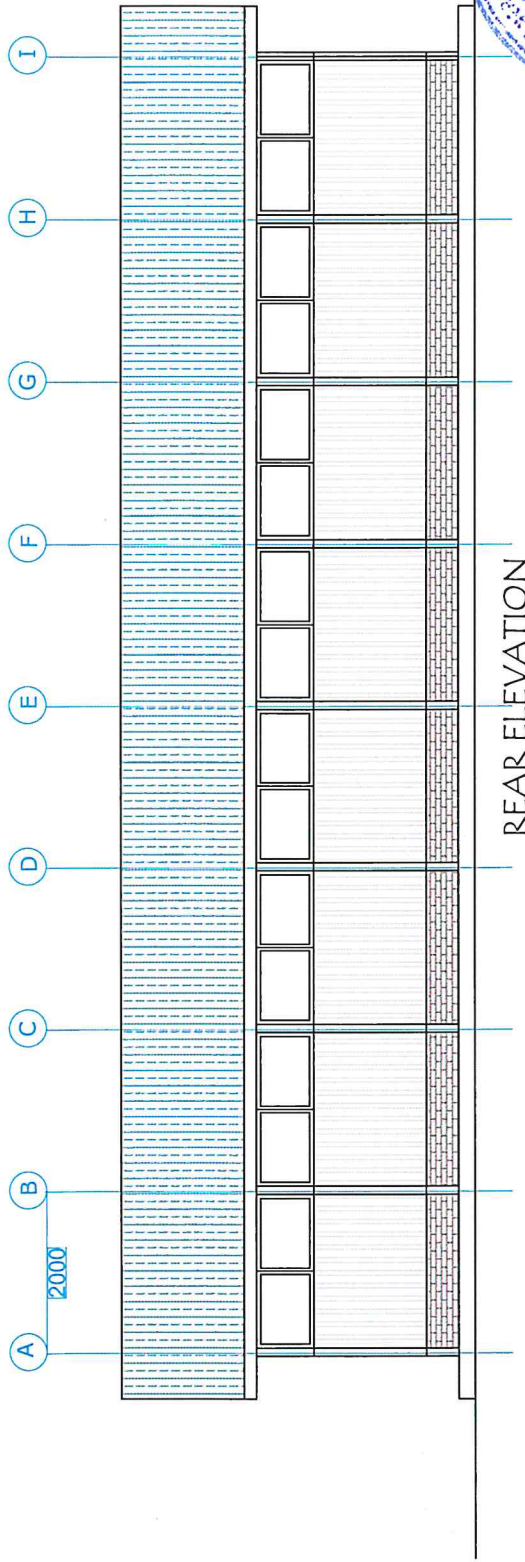
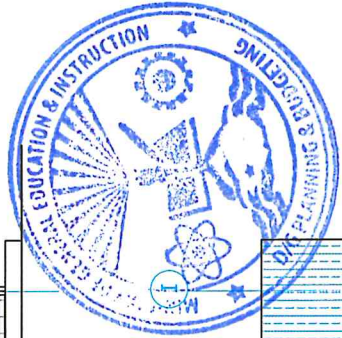


SITE DETAILS	
STATE	
COUNTY	
PAYAM	
BOMA	
COORDINATES	
PREPARED BY: UNICEF / MoGEI , JUBA SOUTH SUDAN	
AUGUST 2021	

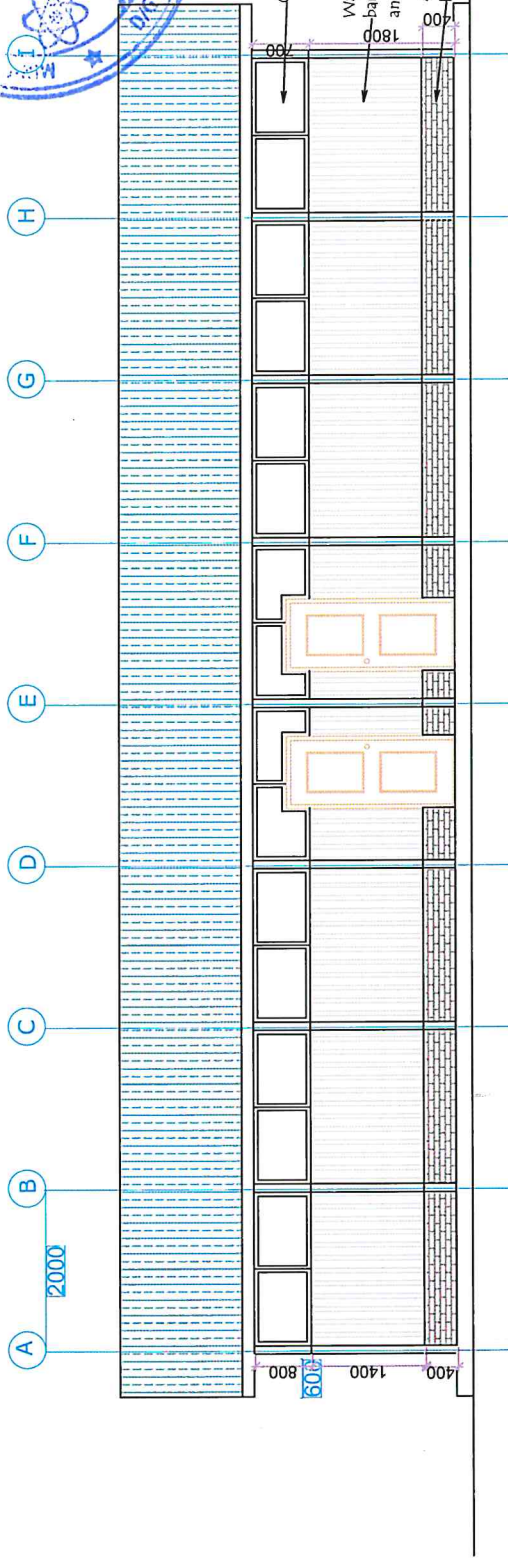


STRUCTURAL FLOOR PLAN


	TITLE: PROPOSED_TLS		DESIGN: UNICEF_SOUTH_SUDAN		PROJECT:		APPROVED BY:		DATE:		
	NO.: 01		DATE: 14.10.2023		APPROVED BY:		DATE:		DATE:		
INDEX: 1. IN DRAWINGS_Plan, ELEVATION, SECTIONS, ROOF PLAN 2. IN REVISION 3. IN REVISION 4. IN REVISION 5. IN REVISION		NO.: A100		DATE: 14.10.2023		APPROVED BY:		DATE:		DATE:	
NO.: 01		DATE: 14.10.2023		APPROVED BY:		DATE:		DATE:		DATE:	
NO.: 01		DATE: 14.10.2023		APPROVED BY:		DATE:		DATE:		DATE:	

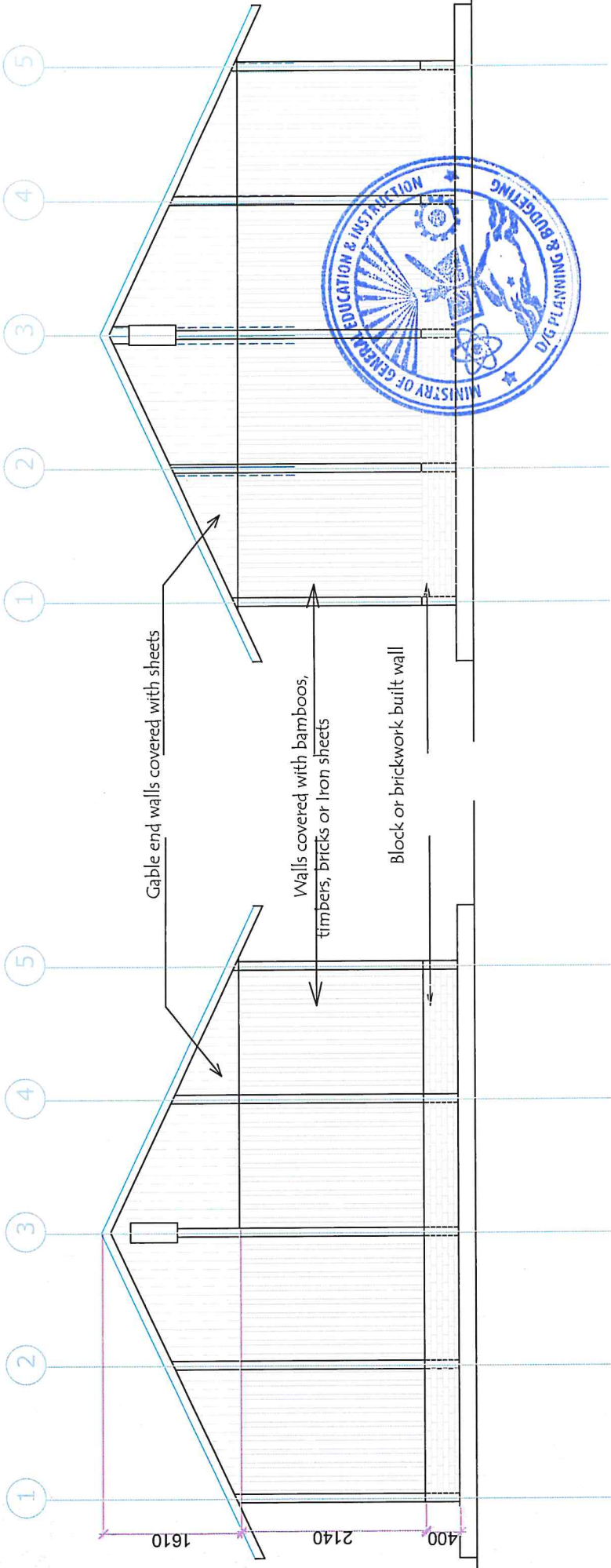


REAR ELEVATION
Scale 1:100




FRONT ELEVATION
Scale 1:100

	TITLE: PROPOSED_TLS		REVISION DRAWINGS_FOUNDATION_FOOTINGS		DATE 14.10.2023		PROJECT:		FOUNDED BY:		
	DESIGN: UNICEF_SOUTH_SUDAN		INDEX A300		DATE 11.10.23		PROJECT:		APPROVED BY:		
REVISION			DATE			PROJECT:			FOUNDED BY:		
1. IN			2. REVISION			3.00.00.09			APPROVED BY:		
2. IN			3. REVISION			4.00.00.09			APPROVED BY:		
3. IN			4. REVISION			5.00.00.09			APPROVED BY:		
4. IN			5. REVISION			6.00.00.09			APPROVED BY:		
5. IN			6. REVISION			7.00.00.09			APPROVED BY:		
6. IN			7. REVISION			8.00.00.09			APPROVED BY:		
7. IN			8. REVISION			9.00.00.09			APPROVED BY:		
8. IN			9. REVISION			10.00.00.09			APPROVED BY:		
9. IN			10. REVISION			11.00.00.09			APPROVED BY:		
10. IN			11. REVISION			12.00.00.09			APPROVED BY:		
11. IN			12. REVISION			13.00.00.09			APPROVED BY:		
12. IN			13. REVISION			14.00.00.09			APPROVED BY:		
13. IN			14. REVISION			15.00.00.09			APPROVED BY:		
14. IN			15. REVISION			16.00.00.09			APPROVED BY:		
15. IN			16. REVISION			17.00.00.09			APPROVED BY:		
16. IN			17. REVISION			18.00.00.09			APPROVED BY:		
17. IN			18. REVISION			19.00.00.09			APPROVED BY:		
18. IN			19. REVISION			20.00.00.09			APPROVED BY:		
19. IN			20. REVISION			21.00.00.09			APPROVED BY:		
20. IN			21. REVISION			22.00.00.09			APPROVED BY:		
21. IN			22. REVISION			23.00.00.09			APPROVED BY:		
22. IN			23. REVISION			24.00.00.09			APPROVED BY:		
23. IN			24. REVISION			25.00.00.09			APPROVED BY:		
24. IN			25. REVISION			26.00.00.09			APPROVED BY:		
25. IN			26. REVISION			27.00.00.09			APPROVED BY:		
26. IN			27. REVISION			28.00.00.09			APPROVED BY:		
27. IN			28. REVISION			29.00.00.09			APPROVED BY:		
28. IN			29. REVISION			30.00.00.09			APPROVED BY:		
29. IN			30. REVISION			31.00.00.09			APPROVED BY:		
30. IN			31. REVISION			32.00.00.09			APPROVED BY:		
31. IN			32. REVISION			33.00.00.09			APPROVED BY:		
32. IN			33. REVISION			34.00.00.09			APPROVED BY:		
33. IN			34. REVISION			35.00.00.09			APPROVED BY:		
34. IN			35. REVISION			36.00.00.09			APPROVED BY:		
35. IN			36. REVISION			37.00.00.09			APPROVED BY:		
36. IN			37. REVISION			38.00.00.09			APPROVED BY:		
37. IN			38. REVISION			39.00.00.09			APPROVED BY:		
38. IN			39. REVISION			40.00.00.09			APPROVED BY:		
39. IN			40. REVISION			41.00.00.09			APPROVED BY:		
40. IN			41. REVISION			42.00.00.09			APPROVED BY:		
41. IN			42. REVISION			43.00.00.09			APPROVED BY:		
42. IN			43. REVISION			44.00.00.09			APPROVED BY:		
43. IN			44. REVISION			45.00.00.09			APPROVED BY:		
44. IN			45. REVISION			46.00.00.09			APPROVED BY:		
45. IN			46. REVISION			47.00.00.09			APPROVED BY:		
46. IN			47. REVISION			48.00.00.09			APPROVED BY:		
47. IN			48. REVISION			49.00.00.09			APPROVED BY:		
48. IN			49. REVISION			50.00.00.09			APPROVED BY:		
49. IN			50. REVISION			51.00.00.09			APPROVED BY:		
50. IN			51. REVISION			52.00.00.09			APPROVED BY:		
51. IN			52. REVISION			53.00.00.09			APPROVED BY:		
52. IN			53. REVISION			54.00.00.09			APPROVED BY:		
53. IN			54. REVISION			55.00.00.09			APPROVED BY:		
54. IN			55. REVISION			56.00.00.09			APPROVED BY:		
55. IN			56. REVISION			57.00.00.09			APPROVED BY:		
56. IN			57. REVISION			58.00.00.09			APPROVED BY:		
57. IN			58. REVISION			59.00.00.09			APPROVED BY:		
58. IN			59. REVISION			60.00.00.09			APPROVED BY:		
59. IN			60. REVISION			61.00.00.09			APPROVED BY:		
60. IN			61. REVISION			62.00.00.09			APPROVED BY:		
61. IN			62. REVISION			63.00.00.09			APPROVED BY:		
62. IN			63. REVISION			64.00.00.09			APPROVED BY:		
63. IN			64. REVISION			65.00.00.09			APPROVED BY:		
64. IN			65. REVISION			66.00.00.09			APPROVED BY:		
65. IN			66. REVISION			67.00.00.09			APPROVED BY:		
66. IN			67. REVISION			68.00.00.09			APPROVED BY:		
67. IN			68. REVISION			69.00.00.09			APPROVED BY:		
68. IN			69. REVISION			70.00.00.09			APPROVED BY:		
69. IN			70. REVISION			71.00.00.09			APPROVED BY:		
70. IN			71. REVISION			72.00.00.09			APPROVED BY:		
71. IN			72. REVISION			73.00.00.09			APPROVED BY:		
72. IN			73. REVISION			74.00.00.09			APPROVED BY:		
73. IN			74. REVISION			75.00.00.09			APPROVED BY:		
74. IN			75. REVISION			76.00.00.09			APPROVED BY:		
75. IN			76. REVISION			77.00.00.09			APPROVED BY:		
76. IN			77. REVISION			78.00.00.09			APPROVED BY:		
77. IN			78. REVISION			79.00.00.09			APPROVED BY:		
78. IN			79. REVISION			80.00.00.09			APPROVED BY:		
79. IN			80. REVISION			81.00.00.09			APPROVED BY:		
80. IN			81. REVISION			82.00.00.09			APPROVED BY:		
81. IN			82. REVISION			83.00.00.09			APPROVED BY:		
82. IN			83. REVISION			84.00.00.09			APPROVED BY:		
83. IN			84. REVISION			85.00.00.09			APPROVED BY:		
84. IN			85. REVISION			86.00.00.09			APPROVED BY:		
85. IN			86. REVISION			87.00.00.09			APPROVED BY:		
86. IN			87. REVISION			88.00.00.09			APPROVED BY:		
87. IN			88. REVISION			89.00.00.09			APPROVED BY:		
88. IN			89. REVISION			90.00.00.09			APPROVED BY:		
89. IN			90. REVISION			91.00.00.09			APPROVED BY:		
90. IN			91. REVISION			92.00.00.09			APPROVED BY:		
91. IN			92. REVISION			93.00.00.09			APPROVED BY:		
92. IN			93. REVISION			94.00.00.09			APPROVED BY:		
93. IN			94. REVISION			95.00.00.09			APPROVED BY:		
94. IN			95. REVISION			96.00.00.09			APPROVED BY:		
95. IN			96. REVISION			97.00.00.09			APPROVED BY:		
96. IN			97. REVISION			98.00.00.09			APPROVED BY:		
97. IN			98. REVISION			99.00.00.09			APPROVED BY:		
98. IN			99. REVISION			100.00.00.09			APPROVED BY:		
99. IN			100. REVISION			101.00.00.09			APPROVED BY:		
100. IN			101. REVISION			102.00.00.09			APPROVED BY:		
101. IN			102. REVISION			103.00.00.09			APPROVED BY:		
102. IN			103. REVISION			104.00.00.09			APPROVED BY:		
103. IN			104. REVISION			105.00.00.09			APPROVED BY:		
104. IN			105. REVISION			106.00.00.09			APPROVED BY:		
105. IN			106. REVISION			107.00.00.09			APPROVED BY:		
106. IN			107. REVISION			108.00.00.09			APPROVED BY:		
107. IN			108. REVISION			109.00.00.09			APPROVED BY:		
108. IN			109. REVISION			110.00.00.09			APPROVED BY:		
109. IN			110. REVISION			111.00.00.09			APPROVED BY:		
110. IN			111. REVISION			112.00.00.09			APPROVED BY:		
111. IN			112. REVISION			113.00.00.09			APPROVED BY:		
112. IN			113. REVISION			114.00.00.09			APPROVED BY:		
113. IN			114. REVISION			115.00.00.09			APPROVED BY:		
114. IN			115. REVISION			116.00.00.09			APPROVED BY:		
115. IN			116. REVISION			117.00.00.09			APPROVED BY:		
116. IN			117. REVISION			118.00.00.09			APPROVED BY:		
117. IN			118. REVISION			119.00.00.09			APPROVED BY:		
118. IN			119. REVISION			120.00.00.09			APPROVED BY:		
119. IN			120. REVISION			121.00.00.09			APPROVED BY:		
120. IN			121. REVISION			122.00.00.09			APPROVED BY:		
121. IN			122. REVISION			123.00.00.09			APPROVED BY:		
122. IN			123. REVISION			124.00.00.09			APPROVED BY:		
123. IN			124. REVISION			125.00.00.09			APPROVED BY:		
124. IN			125. REVISION			126.00.00.09			APPROVED BY:		
125. IN			126. REVISION			127.00.00.09			APPROVED BY:		
126. IN			127. REVISION			128.00.00.09			APPROVED BY:		
127. IN			128. REVISION			129.00.00.09			APPROVED BY:		
128. IN			129. REVISION			130.00.00.09			APPROVED BY:		
129. IN			130. REVISION			131.00.00.09			APPROVED BY:		
130. IN			131. REVISION			132.00.00.09			APPROVED BY:		
131. IN			132. REVISION			133.00.00.09			APPROVED BY:		
132. IN			133. REVISION			134.00.00.09			APPROVED BY:		
133. IN			134. REVISION			135.00.00.09			APPROVED BY:		
134. IN			135. REVISION								



LEFT END ELEVATION
Scale 1:100

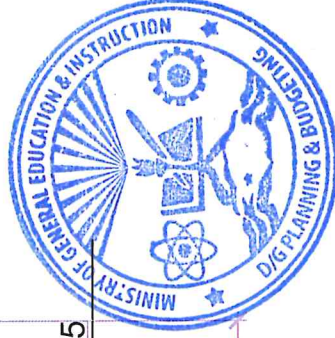
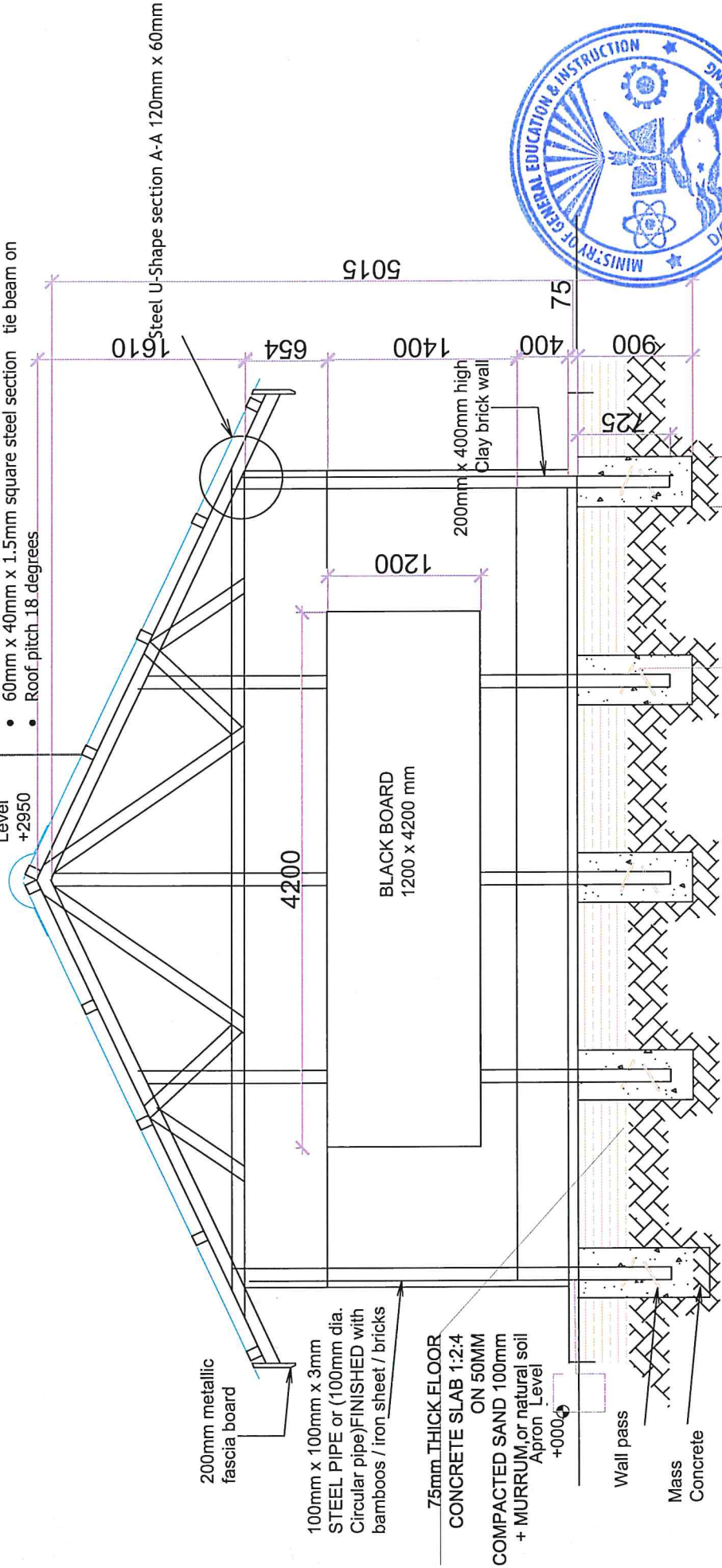
END ELEVATION
Scale 1:100

	TITLE: PROPOSED_TLS		Form # 01		INDEX 1. IN DRAWINGS_Plan_ELEVATION_SECTIONS_ROOFPLAN 2. IN 3. IN 4. IN 5. IN		REVISION 1. 14.10.2023 2. 20.05.09 3. 30.05.09 4. 08.08.09 5. 06.08.09		DATE 14.10.2023 20.05.09 30.05.09 08.08.09 06.08.09		PROJECT:		APPROVED BY:		APPROVED BY:		APPROVED BY:		
	DESIGN: UNICEF_SOUTH_SUDAN		Project Name PROPOSED_TLS		Project Code UNICEF_SOUTH_SUDAN		Project Location SOUTH SUDAN		Project Status UNICEF_SOUTH_SUDAN		Project Manager UNICEF_SOUTH_SUDAN		Project Engineer UNICEF_SOUTH_SUDAN		Project Designer UNICEF_SOUTH_SUDAN		Project Checker UNICEF_SOUTH_SUDAN		Project Approver UNICEF_SOUTH_SUDAN

ROOF NOTES

- G28 Corrugated colored roof sheets
- 40mm X 40mm X 1.5mm thick square section Steel Purlins on
- 60mm x 40mm x 1.5mm square hollow steel section Rafters on
- 40mm x 40mm x 1.5mm Square steel hollow section struts& ties on
- 60mm x 40mm x 1.5mm square steel section tie beam on
- Roof pitch 18 degrees

Top Rafter Level
+2950





FOUNDATION NOTES

- Floor screed finishing
- 20mm thick cement mortar screed 1:3
- 75mm thick RC C25 reinforced with BRC 8mm dia
- 50mm thick sand on,
- 200mm Well compacted wet murrum on,
- Well compacted natural soil

SECTION A-A scale 1:100

NOTE: IN LOCATION WITHOUT MURRAM LET'S USE THE NATURAL SOIL MIXED WITH SAND AND COMPACT TO REDUCE SHRINKAGE AND EXPANSION

		TITLE: PROPOSED_TLS DESIGN: UNICEF_SOUTH_SUDAN		No. 01 DATE: / / Scale: 1:100		INDEX REVISION 1, IN DRAWINGS_FOUNDATION_FOUNDINGS 2, IN REVISION 3, IN REVISION 4, IN REVISION 5, IN REVISION		DATE 14.10.2020 2.00.00.09 3.00.00.09 4.00.00.09 5.00.00.09		PRODUCT: PROJECT: APPROVED BY:		FUNDED BY:	
										NAME: _____ D/M: _____ 01 02			

ROOF NOTES

- G28 Corrugated colored roof sheets
- 40mm x 40mm x 2mm thick square section Steel Purlins on
- 60mm x 40mm x 2mm square hollow steel section Rafters on
- 40mm x 40mm x 2mm Square steel hollow section struts& ties on
- 60mm x 40mm x 2mm square steel section tie beam on
- Roof pitch 18 degrees

Top Rafter Level +2950

200mm metallic fascia board

40mm x 40mm x 3mm Bracing for steel pole

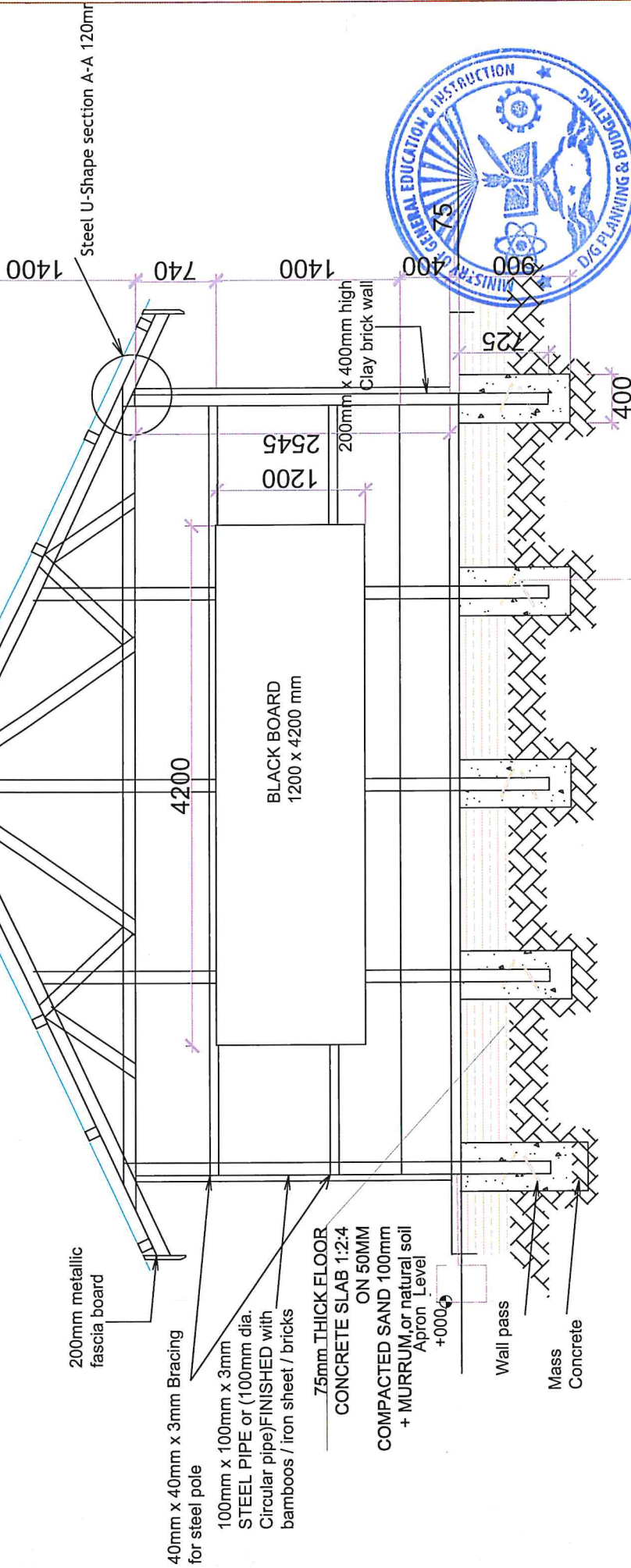
100mm x 100mm x 3mm STEEL PIPE or (100mm dia. Circular pipe) FINISHED with bamboos / iron sheet / bricks

75mm THICK FLOOR CONCRETE SLAB 1:2:4 ON 50MM

COMPACTED SAND 100mm + MURRAM, or natural soil Apron Level +000

Wall pass

Mass Concrete



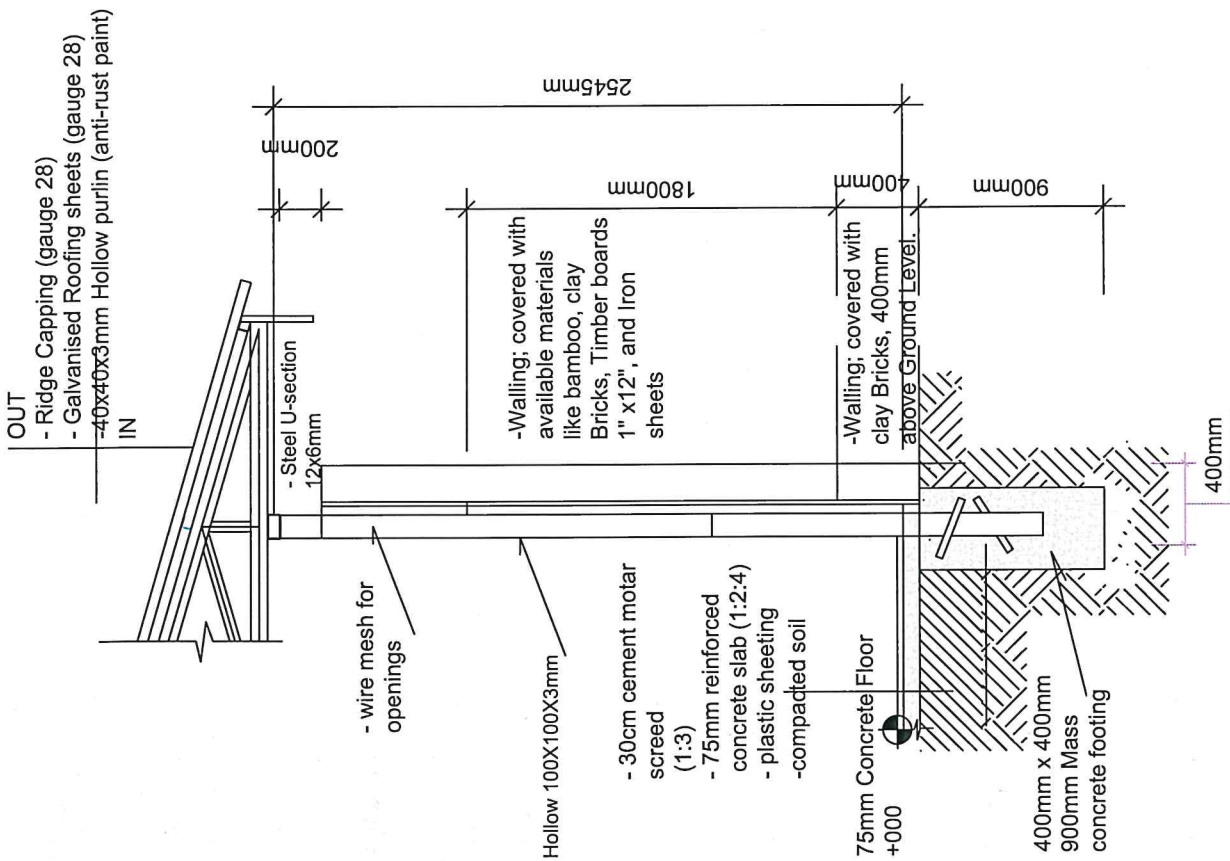
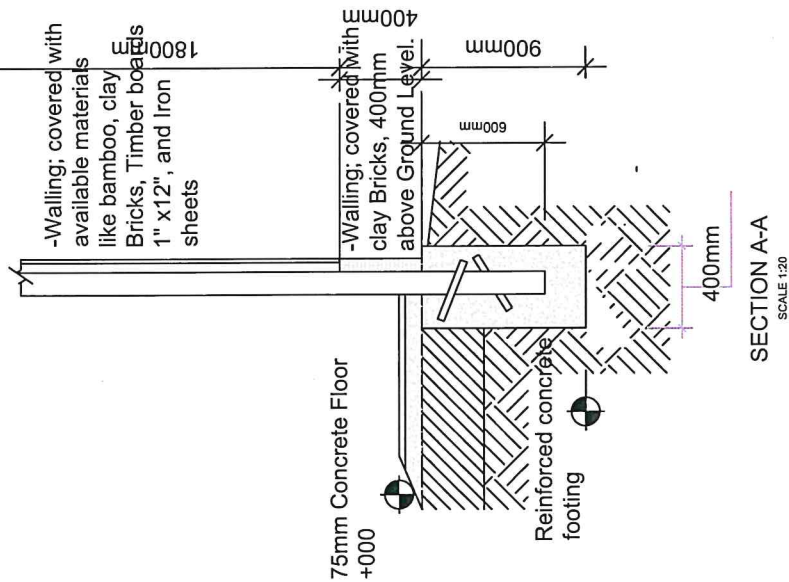
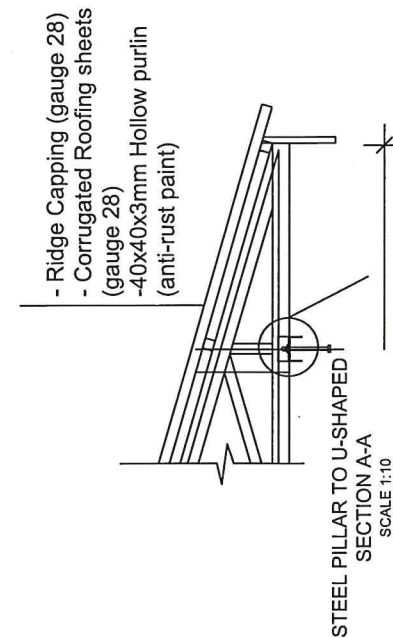
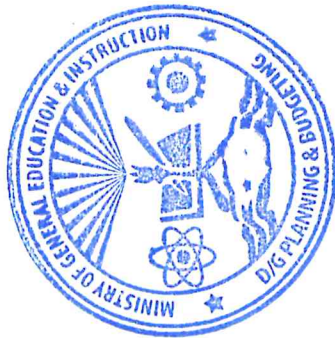
FOUNDATION NOTES

- Floor screed finishing
- 20mm thick cement mortar screed 1:3
- 75mm thick RC C25 reinforced with BRC 8mm dia
- 50mm thick sand on,
- 200mm Well compacted wet murrum on,
- Well compacted natural soil

SECTION A-A scale 1:100

NOTE: IN LOCATION WITHOUT MURRAM LET'S USE THE NATURAL SOIL MIXED WITH SAND AND COMPACT TO REDUCE SHRINKAGE AND EXPANSION

		TITLE: PROPOSED_TLS		DESIGN: UNICEF_SOUTH_SUDAN	
No. 01	Date: / /	No. A500	Date: / /	No. 01	Date: / /
1. IN	1.13.2020	2. REVISION	2.00.00.19	3. IN	3.00.00.19
2. IN	2.00.00.19	3. IN	3.00.00.19	4. IN	4.00.00.19
3. IN	3.00.00.19	4. IN	4.00.00.19	5. IN	5.00.00.19
PROJECT:		PRODUCT:		APPROVED BY:	
DRAWINGS_FOUNDATIONS		APPROVED BY:		APPROVED BY:	
SCHOOLS-ADMINISTRATION_MK-0200 DWG		SCHOOLS-ADMINISTRATION_MK-0200 DWG		SCHOOLS-ADMINISTRATION_MK-0200 DWG	
EDUNICEF/SUD		EDUNICEF/SUD		EDUNICEF/SUD	



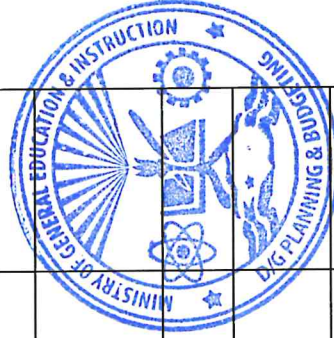
	TITLE: PROPOSED_TLS		INDEX 1, IN DRAWINGS_Plan_ELEVATION_SECTIONS_A800PLAN 2, IN REVISION 3, IN REVISION 4, IN REVISION 5, IN REVISION		DATE 14.10.2024 2.10.2019 3.10.2019 4.10.2019 5.10.2019		PROJECT:		FUNDED BY:	
	DESIGN: UNICEF_SOUTH_SUDAN		REVISION		DATE		PROJECT:		FUNDED BY:	
PROJECT:		DATE:		APPROVED BY:		APPROVED BY:		APPROVED BY:		
PROJECT:		DATE:		APPROVED BY:		APPROVED BY:		APPROVED BY:		
PROJECT:		DATE:		APPROVED BY:		APPROVED BY:		APPROVED BY:		
PROJECT:		DATE:		APPROVED BY:		APPROVED BY:		APPROVED BY:		

UNICEF - SSD

CONSTRUCTION OF TEMPORARY LEARNING SPACES - EMPROVED STRUCTURE

COST ESTIMATES FOR CONSTRUCTION OF IMPROVED TEMPORARY LEARNING SPACE (TLS), (ONE BLOCK OF 2 CLASS ROOMS) - IMPLEMENTATION THROUGH COMMUNITY

S/N	Description	Unit	Qty	Rate (USD)	Amount (USD)	TO BE PROVIDED BY THE COMMUNITY		TO BE PROVIDED BY THE IP	
						Amount (USD)	Amount (USD)	Amount (USD)	Amount (USD)
<p>Note: all quantities refer to the realized works, direct and indirect csts associated to construction and inclusive. It is the responsibility of the IP / contractor to work on the breakdown of the materials, labor, transportation, internal monitoring, etc. To have a detailed final price, based on the design and specifications.</p>									
1.11	Mobilization of personnel, equipment & materials to execute the work.	LS	1						
1.12	Clear site of all grass, shrubs, debris, undergrowth including small trees not exceeding 600mm girth and cart away from site	m ²	220						
1.13	Excavation of 400x400x900mm hole ready to receive Metallic steel poles of size 100mm x 100mm x 3mm.	m ³	4.32						
1.14	Cast Hollow Steel Section poles footings with concrete of mix ratio 1:2:4/20 concrete	m ³	4.23						
1.15	Supply and fix 100mm x 100mm x 3mm HSS steel poles, casted with 1:2:4 concrete as specified in drawing and apply anti-termite	m	156						
1.16	Import and backfill 200mm thick mairrum of approved quality, well compact and levelled where (in areas without murrum compact natural soil mixed with sand and spread on top sand before it receives concrete slab and screed)	m ²	41.1						
1.17	Cast 75mm floor slab with reinforced concrete slab of mix ratio 1:2:4/20 concrete	m ³	14.85						
1.18	Substructural walls - Walls covered with 230mm thick walls in bricks in cement sand (1:4) mortar 400mm high from foundation floor level.	m ²	31.2						
1.19	The from face and the rear face of the walls covered with, bamboos, Iron sheets or Timber walling using 1x12 inch Timbers screwed onto the steel poles, Their prices differs according to the locations (options: of iron sheet, or clay burnt bricks masonry in location without bamboos or timbers be considered case by case).	m	122						
1.20	Iron sheet for side elevation upper level	m ²	22.5						
2.00	ROOFING WORKS								



2.10	Roof cover in G-28 Corrugated Iron Sheet(0.25mm hard product) screwed on 40x40mm HSS roof purlins, 60x40 rafters, 40x40 ties and struts and 60x40x 1.5mm thick tie beam, price includes ridge cover,screw nails, and other accessories (roof cover measured in actual projection & roof structured measured separately). Note all metallic structure used should be coated with anti rust proof.							
2.11	Roof Covering: 28 Gauge Corrugated coloured iron sheets	m ²	162.3					
2.12	Ridge capping.	m	16.9					
2.13	60 x 40 x 2mm Hollow Steel Section Wall plate	m	65					
2.14	60 x 40 x 2mm Hollow Steel Section Rafters	m	109.4					
2.15	40 x 40 x 2mm Hollow Steel Section Purlins	m	262					
2.16	60 x 40 x 2mm Hollow Steel Section Tie beams	m	89					
2.17	40 X 40 x 2mm Hollow Steel Section Struts/ties	m	94					
2.18	Facia board steel plate 200mm x 2mm	m	55					
3	FITTINGS AND FLOOR FINISHES							
3.11	Provide and make a doors 900x2100mm with iron sheets device	Nos.	2					
3.12	Blackboard: 4200mm x 1200mm x 16mm thick plywood	Nos.	2					
TOTAL COST FOR ONE TLS BLOCK OF 2 CLASSROOMS								

