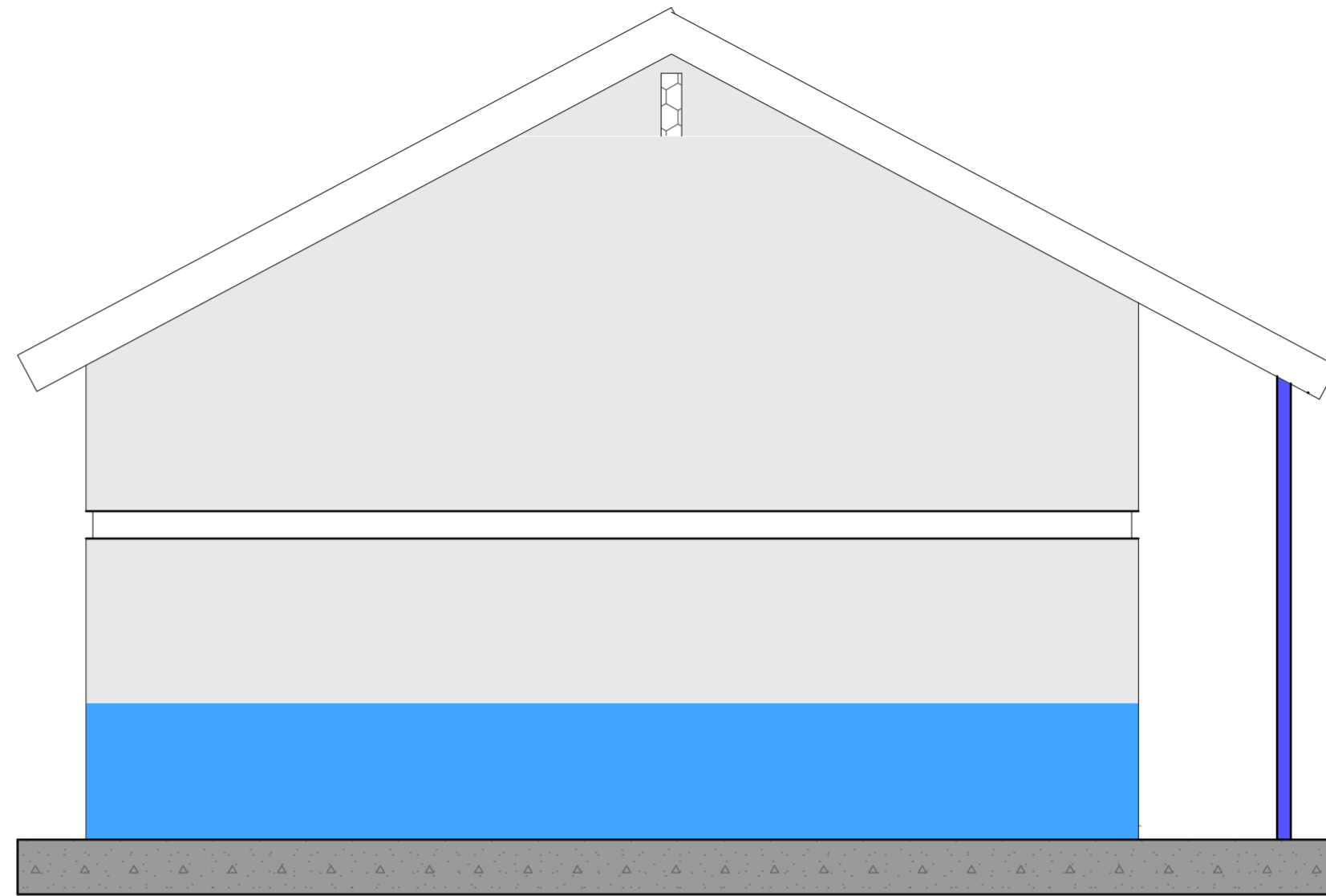


## ROOF DETAIL

**G28 ridge boards & precoated, prepainted & colored roof cover sheets on, 50x75mm purlins on , 50x100mm trush rafters, on 50x100mm ties & struts, 50x150mm tie beams. 75x100mm wall plates, 225x20mm fascia boards.**



***SIDE VIEW***

***Drawing detail***

***Scale***

***SIDE  
ELEVATION***

***1:1000mm***

***location***

***funded by***

***implemented by***

***GODO PRIMARY SCHOOL  
GOROM***

