

Roofing and Ceiling details

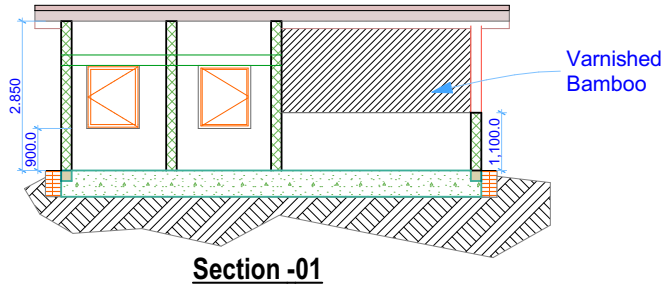
replace the facial board

Ceiling:

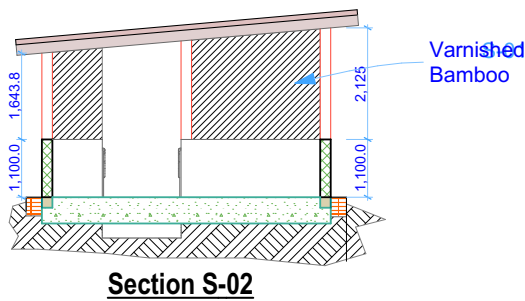
- Use Decorated suspended ceiling with all it requirement

**Changing room and Recreation
Space for Isolation Unit**

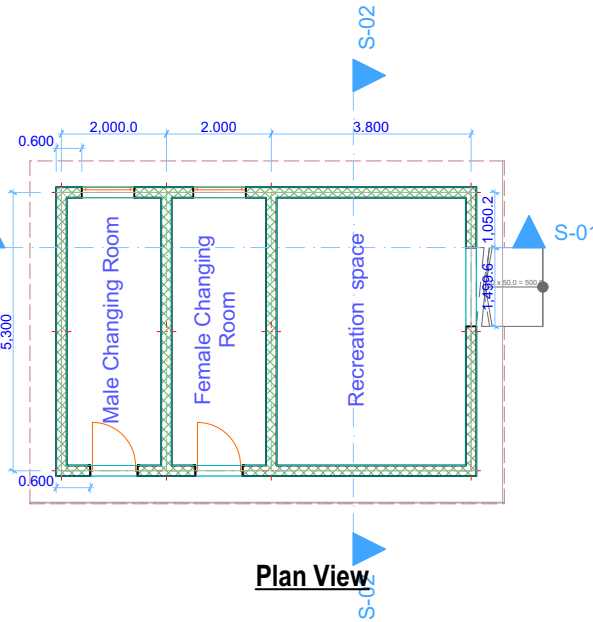
LOT 3



Section -01



Section S-02



Plan View

Exterior, Interior Wall and Floor Details

Exterior wall:

- Use 6Y12 as tension and compression where Y12@150c/c as stirrups and concrete at M20
- 200 mm thick of well burnt red bricks bedded in cement sand mortar @ 1:3 reinforced with hoop iron every 60mm
- Apply 20 mm thick cement sand (seived) 1:3 plaster finished and rought skirtd plastering (will be directed)
- Apply 1 coat of budget emulsion paint and 2 costs of weather guard painted(color will be advised)

Interior Wall:

- Apply 20 mm thick cement sand (seived) 1:3 plaster finished
- Apply 20mm cement sand (1:4) mortar, lime putty (1:10 finished) with
- 1coat of budget emusion ,paint 2 finishing coats of silk vinyl emusion paint (color will be advised)
- 2 coats 150mm high skirting of approved oil paint

Floor Details

- Use tile 400x400m at the cement sand motar of 1:3 rooms,varanda and corridors
- Screed all the aprone in cement metalic

NOTES

1. All dimensions are in MM unless otherwise specified.
2. Use figured dimension only. Donot scale off the drawing
3. use hoop iron to reinforce the wall at the intervals of 400mm at every alternate course
4. Water meter level should be @mini 300mm above the ground level
5. The architect shall not accept any liabilities for works which has not be expressly instructed in writing to surprise or for any any omission or deviations from this drawing (s) nor shall take rrsponsibility for works handed by nominated contractor

Double Shutter Doors schedule

No.	Desc-	Qty	Size
D1	Fabricated metal glass door	2	2400 X 900

sliding Windows schedules

W	Metal with glasses	2	1200 X 1000
---	--------------------	---	-------------

PROJECT TITLE

Proposed Upgrading of Isolation Unit for Yei River County

FUNDED BY AA



german
humanitarian
assistance
DEUTSCHE HUMANITÄRE HILFE

Implemented by: Malteser International



**Malteser
International**
Order of Malta Worldwide Relief