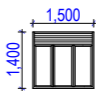
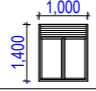
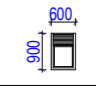
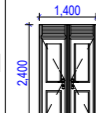
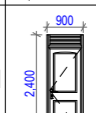
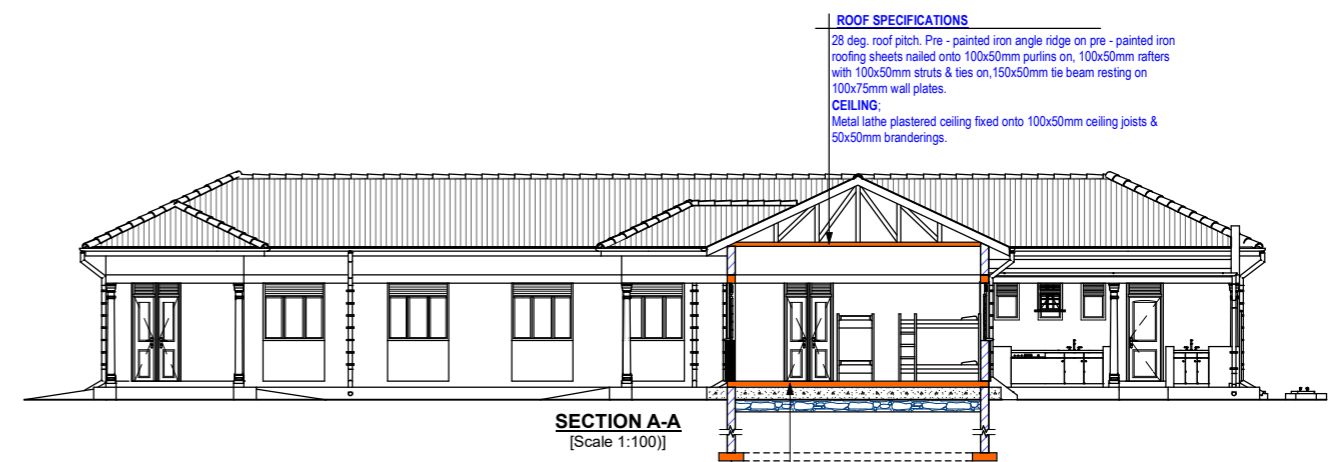
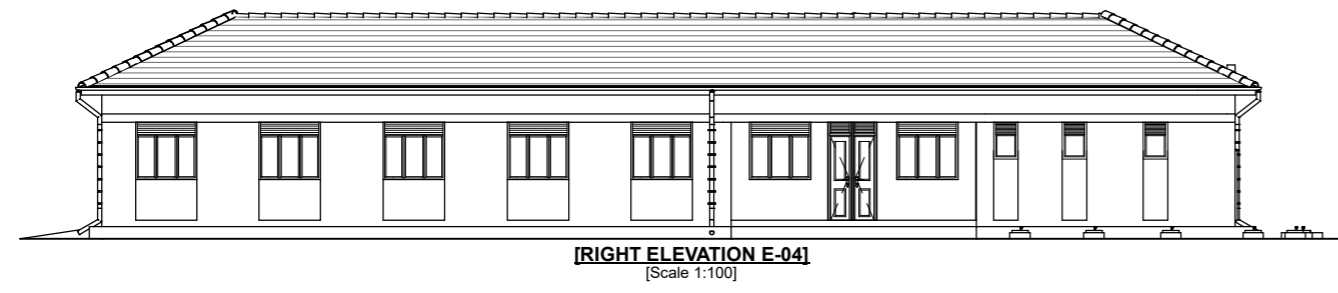


**E-01**  
**TYPICAL AS BUILT GROUND FLOOR**  
**LAYOUT PLAN**  
 [Scale 1:100]

WINDOW SCHEDULE			
Mark	Size	Remarks	No. Req'
[w1pvo]		Steel Casement Glazed Window Side Hung opening Out With Burglar proof & PVO	40
[w2pvo]		Steel Casement Glazed Sliding Window With Burglar proof & PVO	01
[w3pvo]		Steel Casement Glazed Window Up Hung opening Out With Burglar proof & PVO	22

DOOR SCHEDULE			
Mark	Size	Remarks	No. Req'
[d1pvo]		Steel Casement Transom Double Half Glazed Opening Door With Burglar Proof & PVO	10
[d2pvo]		Steel Casement Transom Single Glazed Opening Door With Burglar Proof & PVO	03



**ROOF SPECIFICATIONS**  
28 deg. roof pitch. Pre - painted iron angle ridge on pre - painted iron roofing sheets nailed onto 100x50mm purlins on, 100x50mm rafters with 100x50mm struts & ties on, 150x50mm tie beam resting on 100x75mm wall plates.  
**CEILING:**  
Metal lath plastered ceiling fixed onto 100x50mm ceiling joists & 50x50mm branderings.

**FLOOR SLAB:**  
25mm cement sand screed (mix 1:3) on 100mm thick over site concrete (mix 1:3:6) on well compacted and blinded 200mm thick hardcore on well rammed murrum base.

**FOOTINGS:**  
200x600XL concrete strip foundations (mix 1:3:6) to receive 200mm thick plinth walls. Foundation depth to be determined on site and to be not less than 800mm.

